



King County
Department of Local Services
Road Services Division

April 16, 2025



Leon Richardson
Department Director



Tricia Davis
Road Services Division Director



Department of Local Services Vision and Mission

Vision: Unincorporated King County thrives with well-served communities where residents feel empowered, heard, and supported by responsive local government services that enhance well-being and quality of life.

Mission: We work to promote the well-being of residents and communities in unincorporated King County by seeking to understand their needs and delivering responsive local government services.

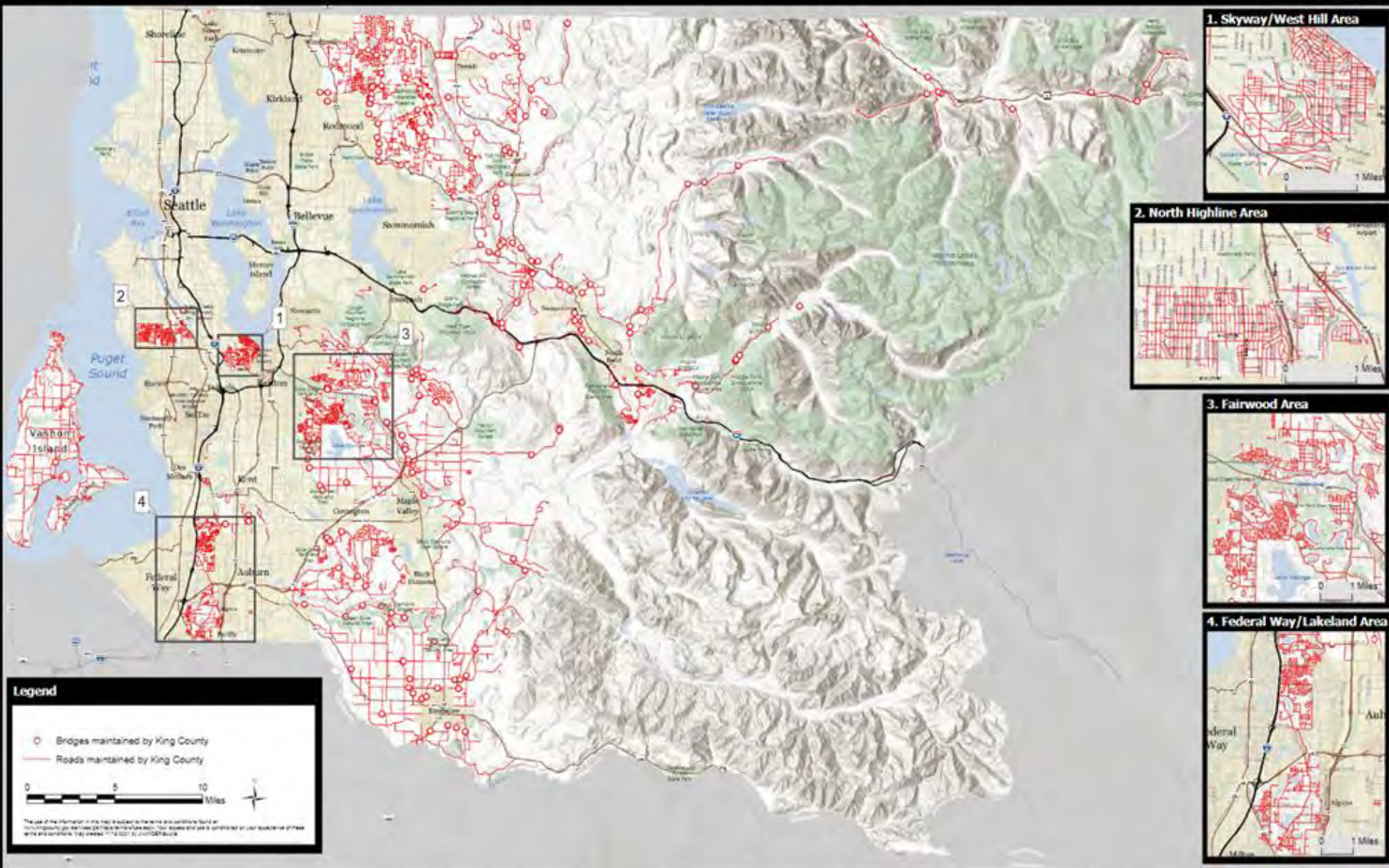


Unincorporated King County

- About 80% of King County—1,713 square miles—is unincorporated
- About 250,000 residents live in unincorporated King County
- 7 Community Service Areas
- 5 potential annexation areas
 - East Federal Way
 - East Renton
 - Fairwood
 - North Highline
 - West Hill



Unincorporated King County Road Network



- 1,500 miles of roads and 188 bridges
- 400+ employees
- 6 regional maintenance facilities
- 1 million+ vehicle trips a day on an aging system of roads and bridges
- 40+% of trips on high-volume roads start and end in other cities and counties
- 250,000 residents in unincorporated area, two million in King County
- If the road miles of unincorporated King County were laid end-to-end they would stretch from Mexico to the Canadian border and beyond.



Director's Office

The Director's Office supports unincorporated residents in accessing King County government services

General Support

- Community office hours
- Help residents resolve issues
- Connect residents to county departments
- Provide assistance to community groups
- Connect small businesses to resources



Programs

- Community Needs Lists
- Subarea Planning
- Participatory Budgeting
- Economic Development

Local Services staff members with members of the 2023-24 Participatory Budgeting Steering Committee. This program empowers members of unincorporated communities to decide how government funds will be spent in their neighborhoods.



Permitting Division

The King County Permitting Division provides land use, building, and fire regulatory and operating permits, code enforcement, and a limited number of business licenses in unincorporated areas of the county.

Permits

Permit information and start the process for residential, commercial, land use, and other types of permits.

Permit status

Pay invoices

Inspections

Inspection line (IVR):
888-546-7728

IVR inspection codes and other agency inspection information

Schedule an inspection online

Property research

Check your jurisdiction and zoning information to help start your permit process. Resources include interactive maps and data to check jurisdiction, zoning, and other property information.

Code enforcement

Find out what types of violations we investigate and the process to file a complaint.

File a complaint

Business licenses

Learn what types of regulated businesses and activities for which King County requires business licenses

Legislation

5290

Title 23/code enforcement

Comprehensive Plan

Legislative actions/priorities



King County Road Network Challenges

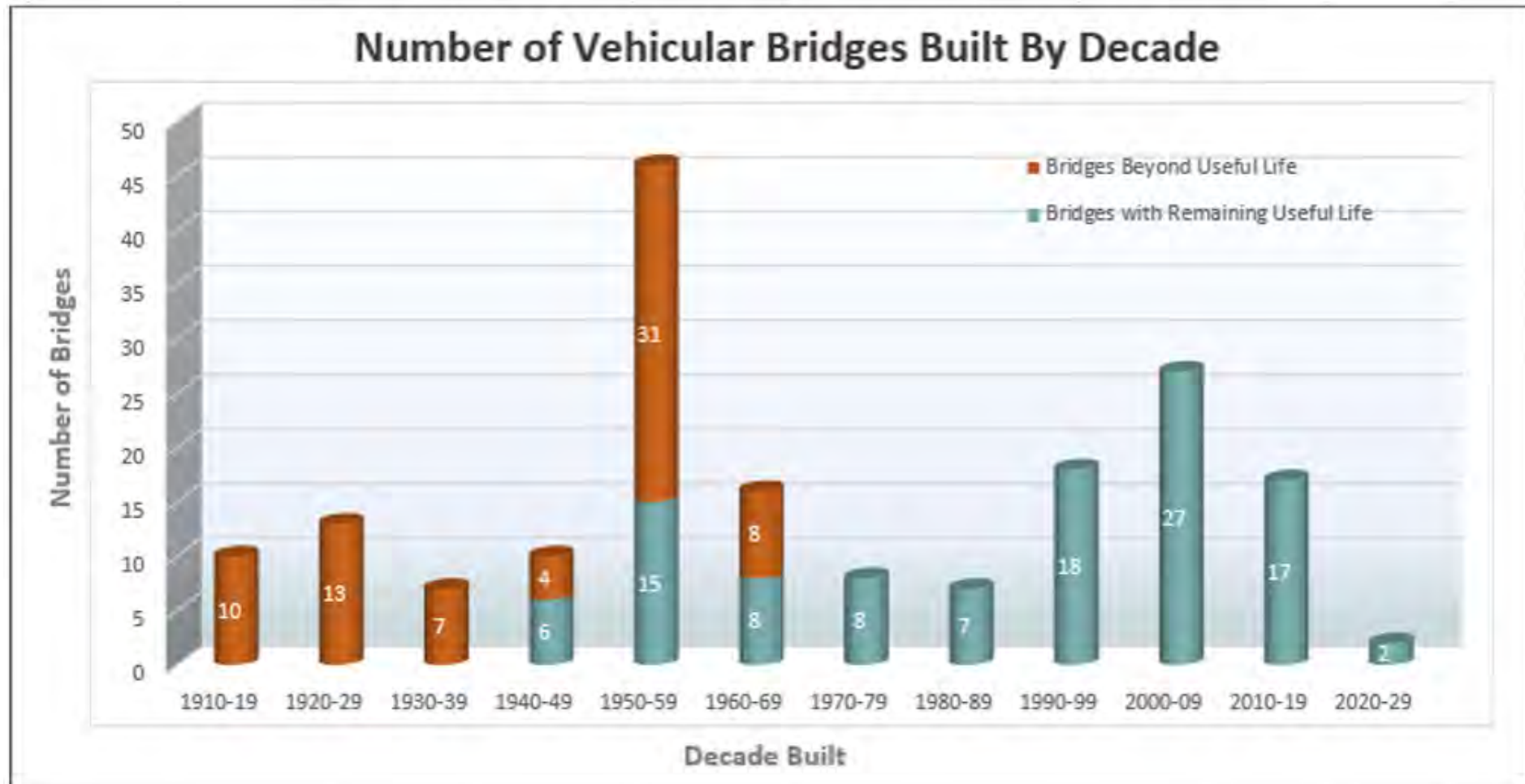
Transportation needs continue to greatly out pace available resources for a road and bridge system in decline.



- **Climate impacts** – flooding, slides, colder and hotter temperatures
- **Increased demand** – growth in surrounding cities traveling between cities and counties
- **System in decline** – an inability to adequately invest in infrastructure asset management, have resulted in a system of roads, bridges, and buildings in decline and at risk of failure
- **Regulatory changes** – tire dust (6-ppdq), fish passable culverts, Americans with Disabilities Act transition plan
- **Cost escalation** - construction costs are rising significantly, driven by supply chain issues, labor shortages, and materials costs.
- Nearly **\$2.5 billion in infrastructure needs** across the unincorporated King County road network documented in the Transportation Needs Report (2020).



Aging Bridges in Decline



Removing Barriers to High-Quality Salmon Habitat



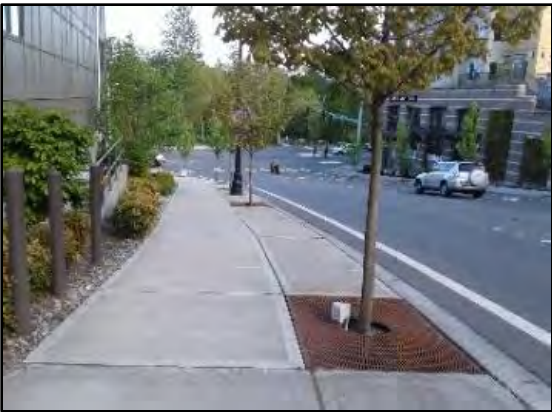
King County replaced two worn out, narrow pipes under SE 432nd Street with a new box culvert. Another small pipe that is parallel to SE 432nd Street was also replaced with a larger box culvert. The new culverts are located beneath and alongside SE 432nd Street between the Enumclaw-Foothill Trail and 278th Avenue SE, northeast of Enumclaw, WA.



King County
Department of Local Services

Americans with Disabilities Act Transition Plan

Sidewalks



335 miles

Curb Ramps



5,200+

Crosswalks



2,600+

Pushbuttons



436

Total Estimated Need: \$551 million
Annual Funding Available¹: \$150,000

1. Roads typically completes \$100,000 - \$200,000 of ADA improvements annually as incidental elements of larger capital projects and maintenance programs. These improvements may address low, medium, or high priority barriers based on the location of the larger project or program and are not included in the Annual Funding amount above.

King County Road Funding Challenge

Transportation needs continue to greatly out pace available resources for a road and bridge system in decline.

Impact of the Growth Management Act

- Small tax base relative to the size and age of our unincorporated road network system.
- Annexations consistent with GMA resulted in disproportional annexation of tax base compared to transportation assets.
- Regional population growth results in higher traffic volumes and congestion, yet aging road infrastructure is crumbling and cannot meet demand.

Washington's Tax Structure

- Washington's tax system limits Roads' ability to leverage revenue sources to resolve its funding crisis.
- Property tax growth is capped at 1%.
- Gas tax revenues are flat.



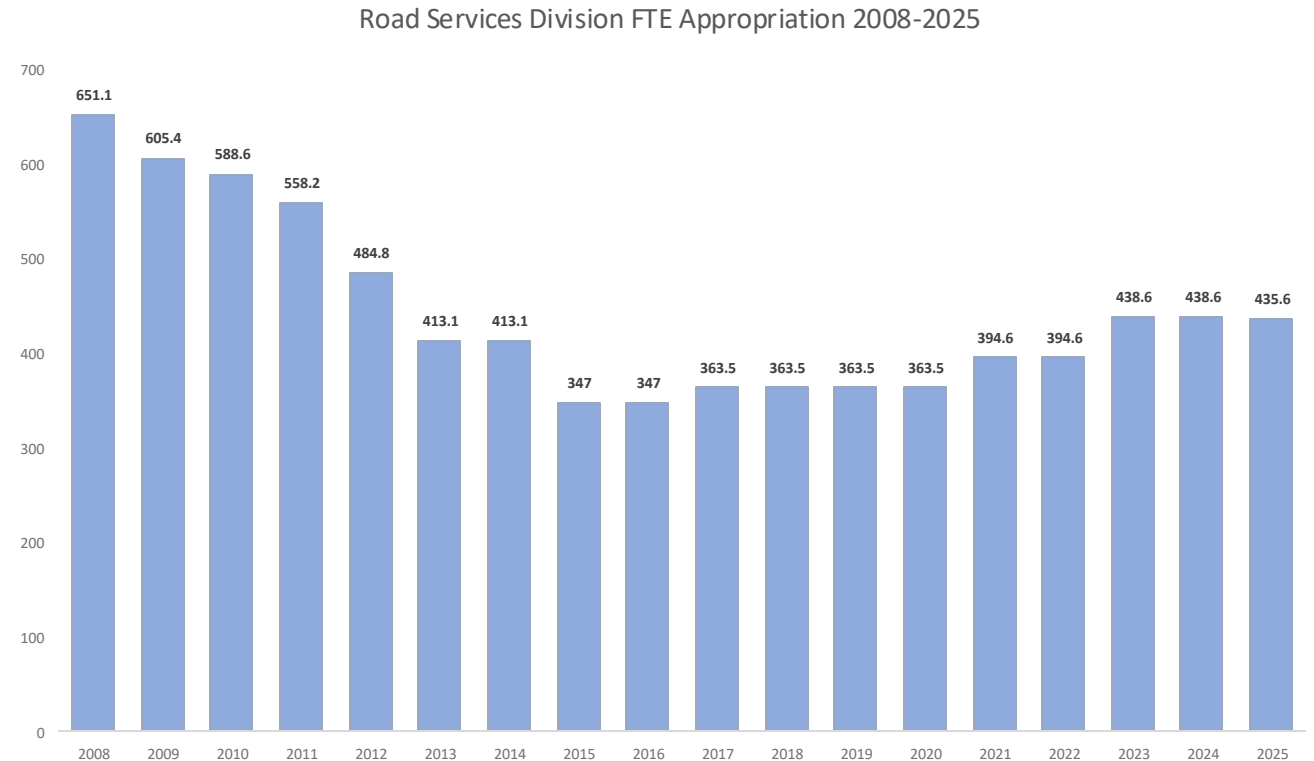
Crews plan the next steps of the Redmond Ridge roundabout at NE Alder Crest Dr.



Actions Taken to Address Shortfall

- 40% reduction in staff (2008-2016)
- Reduction in services (2008-2014)
- Bridges and Roads Task Force (2015-2016)
- Levy lid lift planning (2019 and 2021)
- Aggressive pursuit of grant funding
 - Grant awards 2019 through present **\$120+ million; 54 grants**
 - Grant awards 2024 through present **\$8 million; 10 grants**

80% of grant dollars are federally funded



Impact to Regional Customers

The Few Are Paying for the Many

- Limited funding restricts investment to life safety and basic infrastructure maintenance.
- Unfunded needs, regional growth, and aging infrastructure are driving network decline.
- Emergency response and readiness at risk.

Activities at risk

- Snow and ice response
- Storm washout repair
- Bridge maintenance and replacement
- Pavement repairs
- Sign & signal maintenance
- Drainage pipe maintenance



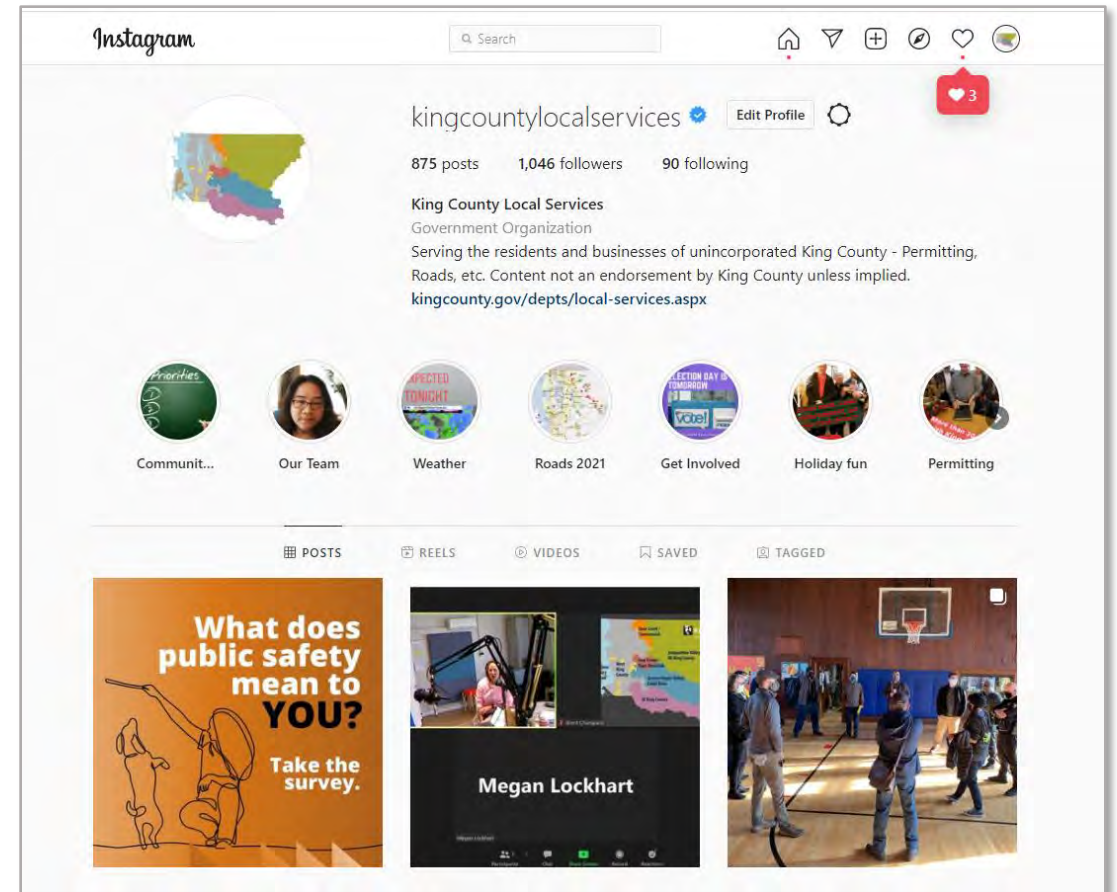
Customer Support

- **Asklocalservices@kingcounty.gov**
 - 206-477-3800
- **Permitquestions@kingcounty.gov**
 - 206-296-6600
- **24/7 Roads Helpline - 206-477-8100**
 - 800-527-6237
 - maint.roads@kingcounty.gov
 - **Check road conditions online – kingcounty.gov/MyCommute**
Subscribe to email alerts – kingcounty.gov/RoadAlert



Find us on...

- kingcounty.gov/local-services
 - **UA News**, our monthly newsletter (subscribe on our home page)
- **King County Local Blog** kingcountylocalblog.com
- **LinkedIn**
 - [King County Department of Local Services](https://www.linkedin.com/company/king-county-department-of-local-services)
- **YouTube**
 - [@kingcountylocalservices](https://www.youtube.com/@kingcountylocalservices)
- **Instagram/Facebook** [@kingcountylocalservices](https://www.instagram.com/kingcountylocalservices)
- **X (formerly Twitter)** (Road Services) [@kcroads](https://twitter.com/kcroads)



Questions?

Leon Richardson, Department Director

Email: lrichardson@kingcounty.gov

Cell: 206-247-2201

Work: 206-263-3332

Tricia Davis, Road Services Division Director

Email: tricia.davis@kingcounty.gov

Cell: 206-475-2077

Work: 206-263-9690



King County

Department of Local Services