

Regional Transportation: The Big Picture

Washington State Transportation Commission
April 16, 2025



We are leaders in the region to realize equity for all. Diversity, racial equity and inclusion are integrated into how we carry out all our work.

psrc.org/equity

Today's Presentation



- Overview of PSRC and Current Regional Plans
- Recent Accomplishments and Activities
- Ongoing and Upcoming Work
- Challenges Ahead



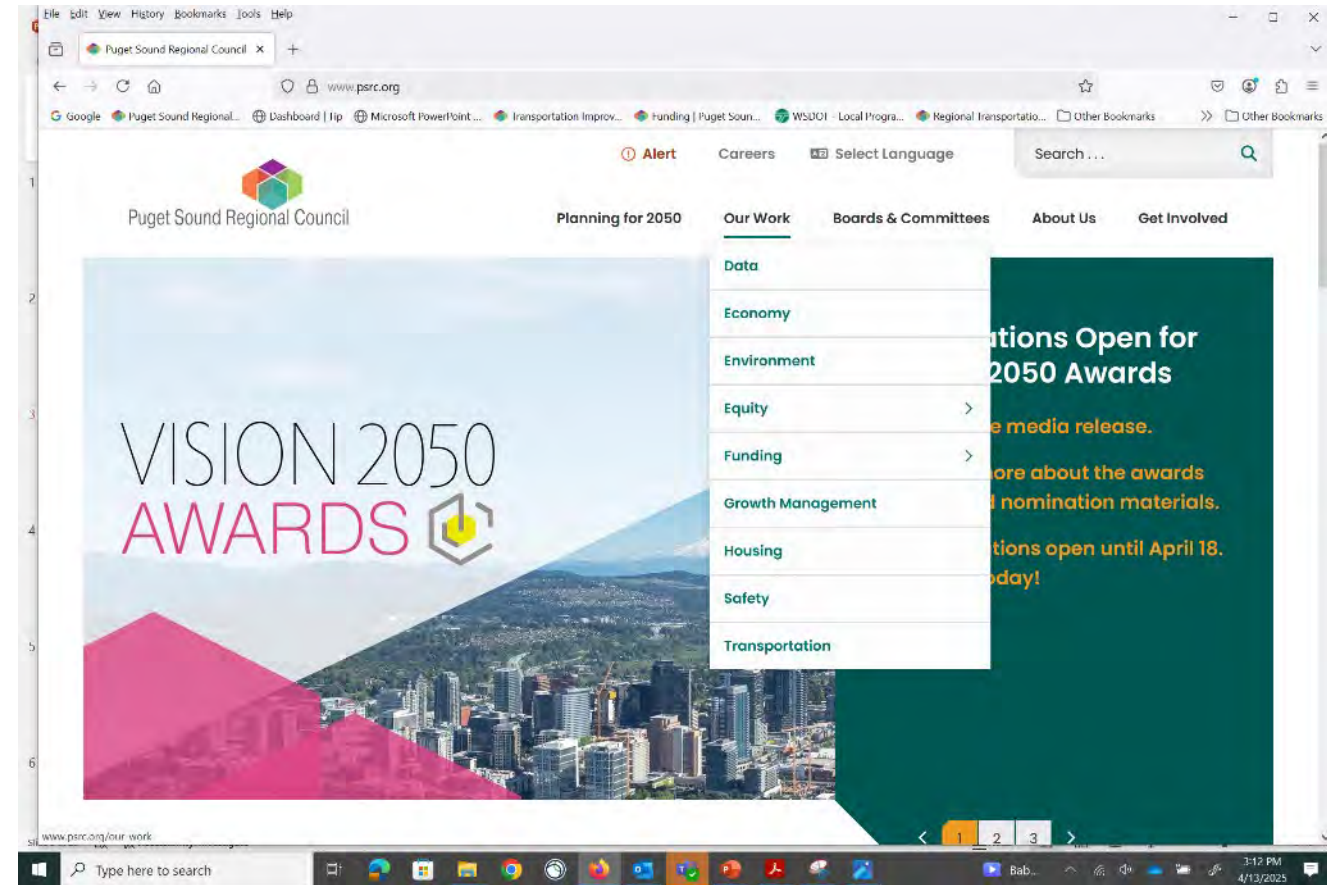
Puget Sound Regional Council

What we do

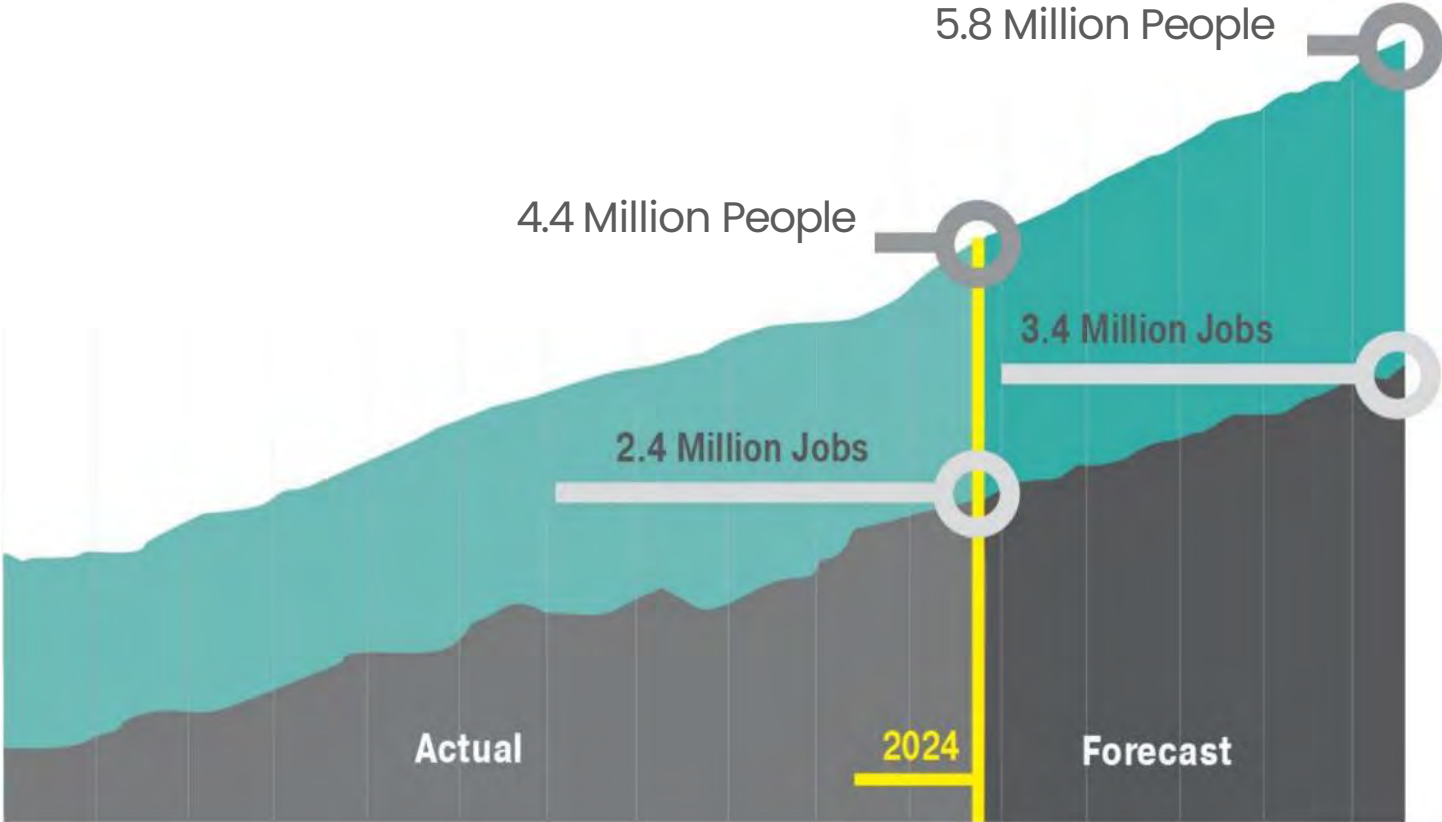
- Planning: growth, economy, transportation
- Federal transportation funds (\$290 million/year)
- Regional data and forecasts
- Forum for regional issues

Our members

- Cities, counties, ports, transit
- State agencies and Tribal governments



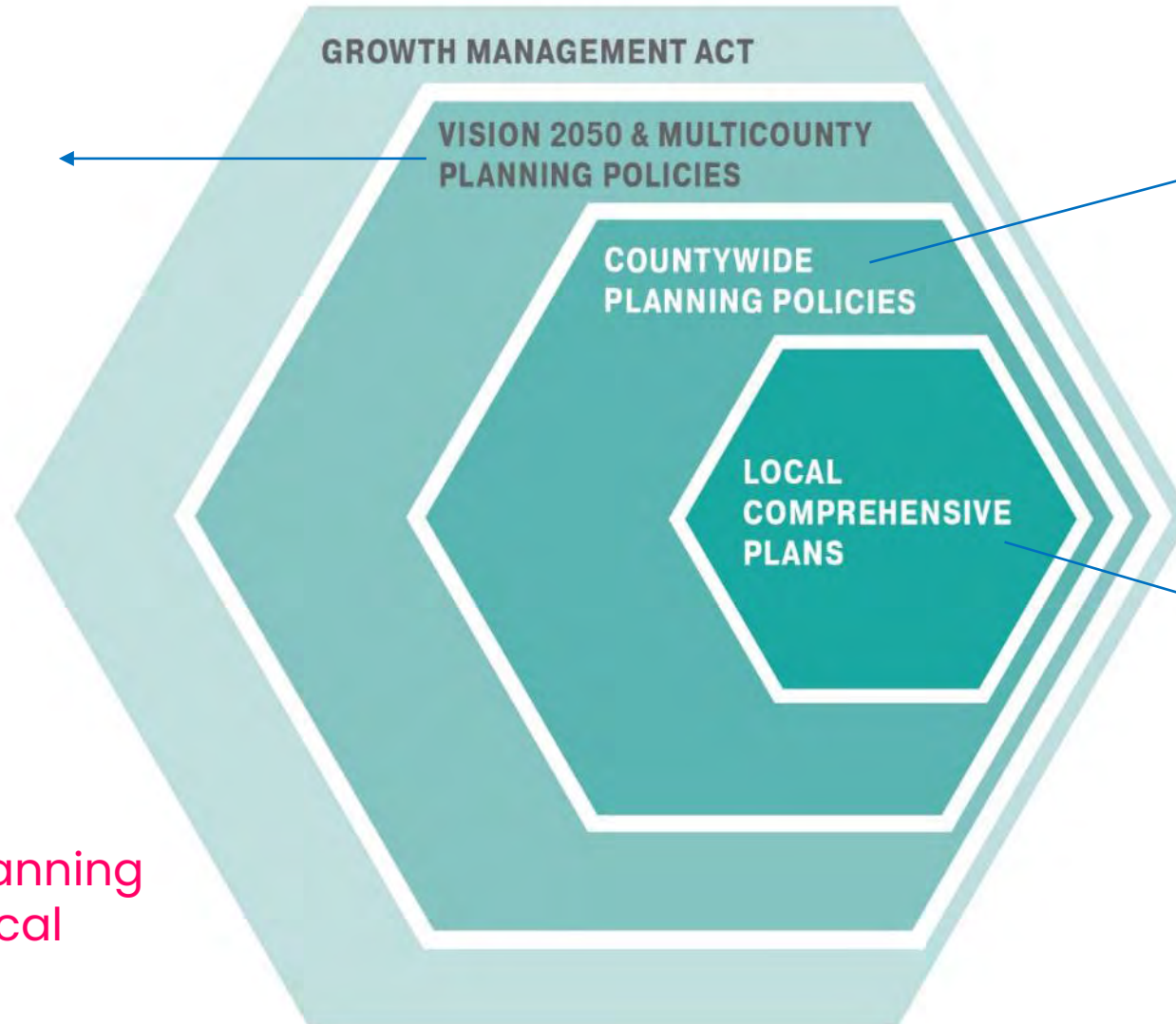
The Region Continues to Grow



Source: PSRC Regional Macroeconomic Forecast



Planning Framework



PSRC as the regional planning organization

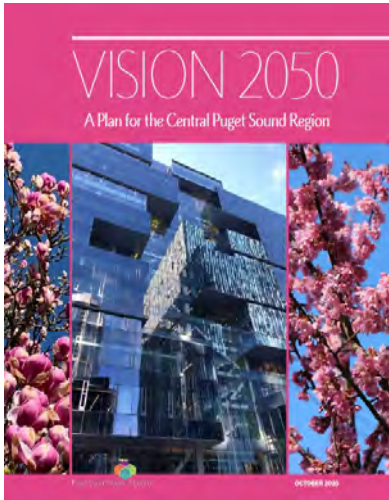
Counties and cities work together to set population & employment growth targets and policies to guide growth

PSRC certifies countywide planning policies and local plans

Local jurisdictions prepare plans that must be consistent with multicounty & countywide policies



Planning Framework



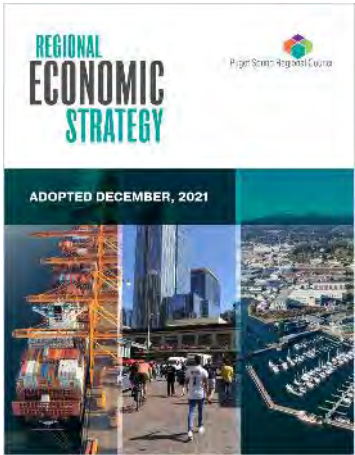
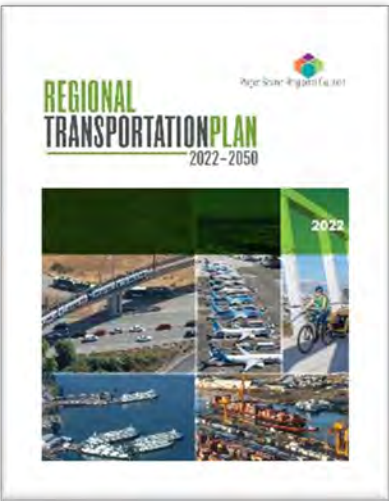
REGIONAL POLICY DIRECTION

VISION 2050
—Multicounty Planning Policies—
—Regional Growth Strategy—

DETAILED FUNCTIONAL IMPLEMENTATION PLANS

Regional Transportation Plan
—Metropolitan Transportation Plan—

Regional Economic Strategy
—Comprehensive Economic Development Strategy—



Key VISION Themes

-  Increase **housing** choices and affordability
-  Provide **opportunities** for all
-  Sustain a strong **economy**
-  Significantly reduce greenhouse gas **emissions**
-  Keep the region **moving**
-  Restore the health of **Puget Sound**
-  Protect a network of **open space**
-  Growth in **centers** and near **transit**
-  Act **collaboratively** and support **local efforts**



Current Regional Transportation Plan

Builds from VISION 2050

2022-2050
REGIONAL TRANSPORTATION PLAN

- **Objectives:**

- Make progress on existing challenges, address current and future needs of the transportation system
 - Provide better data and analysis to support local investment planning (2024 comprehensive plans)
- Plan for long-term system investments to accommodate future growth
 - Improve existing system, big picture thinking on future investments (aviation, rail, ferries)



An Integrated Multimodal Transportation System

The plan anticipates \$300 billion of investment over the next 28 years

★ 56% of the plan's total investments are dedicated to maintain, preserve and operate the transportation system

★ The plan also invests in strategic system improvements across modes – of which 70% is devoted to investments in local and regional transit



An Integrated Multimodal Transportation System

In addition to the priority on maintenance and preservation, and the significant investment in local and high-capacity transit, the RTP includes:

- A **Coordinated Mobility Plan** with prioritized strategies to improve mobility for people with specialized transportation needs.
- An **Active Transportation Plan** with a specific focus on access to transit and completing networks.
- Strategic, multimodal roadway investments supporting **48% of bus passenger volumes and 46% of total truck miles.**



Informed by Public Engagement



Online Engagement Platform Virtual Outreach Meetings



Personal Interviews



Social Media



Survey

Puget Sound Regional Council
on Thursday

We want to hear from you! Take a survey to help plan the future of transportation in Puget Sound: <https://engage.psrc.org/regional-transportation-plan>

HOW WILL YOU GET AROUND?

ENGAGE.PSRC.ORG
Regional Transportation Plan
PSRC is developing the next Regional Transportation Plan, which will des...

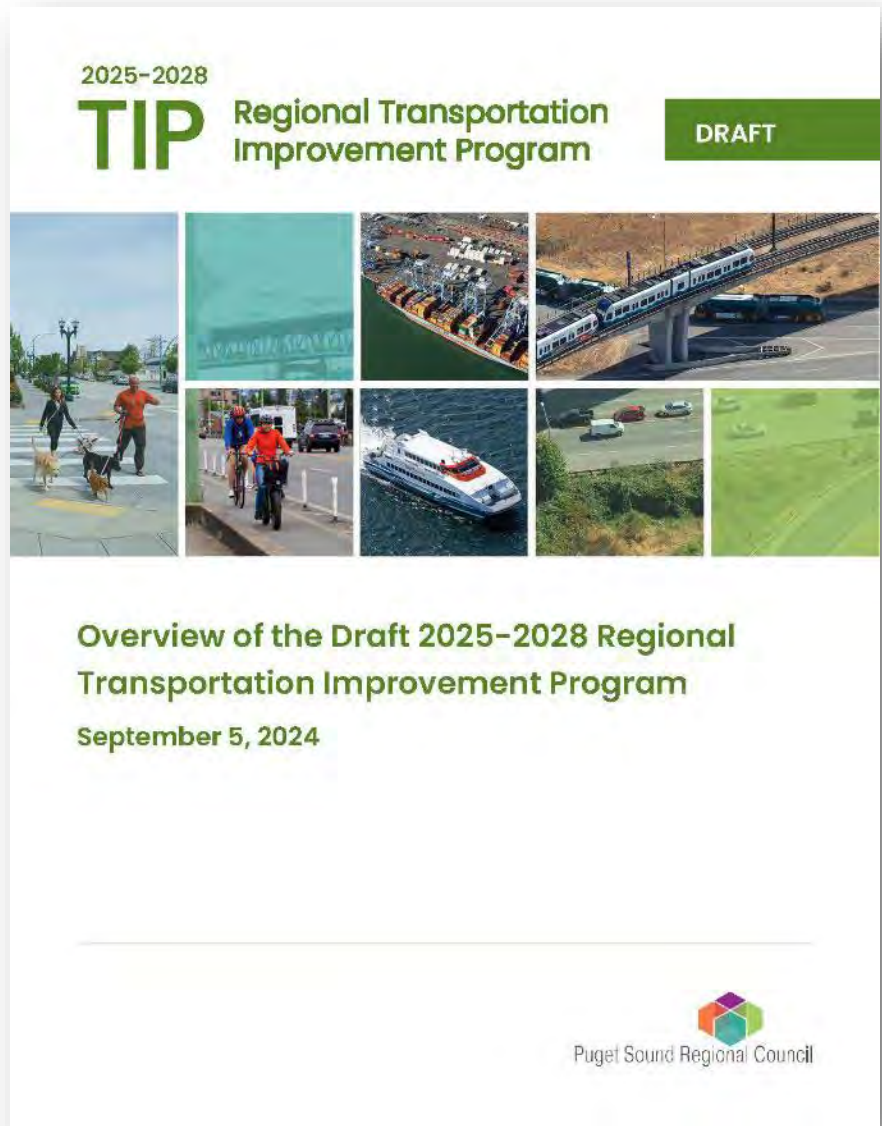


Recent Work – PSRC Examples

- Regional Housing Strategy, adopted February 2022
- Regional Safety Summit and development of draft Regional Safety Action Plan, to be adopted May 2025
- Comprehensive Plan reviews underway
- Fund Our Ferries convenings
- Summer Planning Academy for high school students
- PSRC Funding and Transportation Investments
- RTP Performance Dashboard and Key Trends



Regional Transportation Investments



Covers years 2025-2028,
as of September 2024

- 435 projects programmed, most include multiple outcomes
- \$9.6 billion programmed, representing \$44 billion in total investments in the region



2024 Project Openings – Examples

- ✓ Lynnwood Link Light Rail Extension
- ✓ 2 Line, Light Rail from South Bellevue to Redmond Technology Center
- ✓ King County Metro – RapidRide G Line
- ✓ Community Transit – Orange Line
- ✓ I-405/NE 132nd St. Interchange
- ✓ I-5, NB Seneca to SR 520 Mobility Improvements
- ✓ And numerous local projects – bike/ped, roadway, safety, preservation



RTP Performance Dashboard and Key Trends

Data trends covering safety, growth, transit, emissions, active transportation, travel



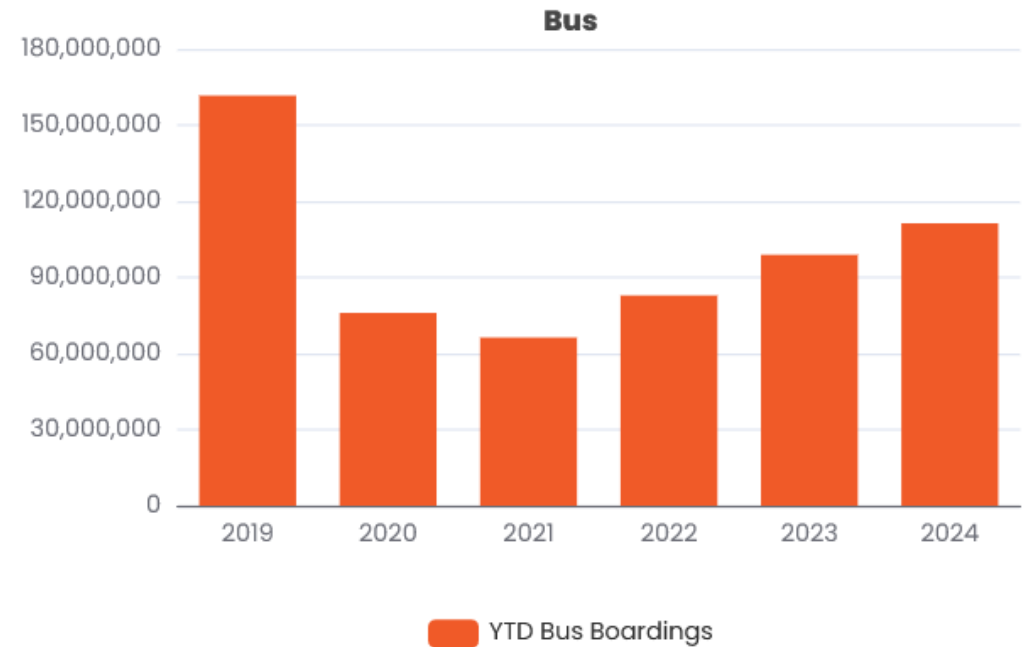
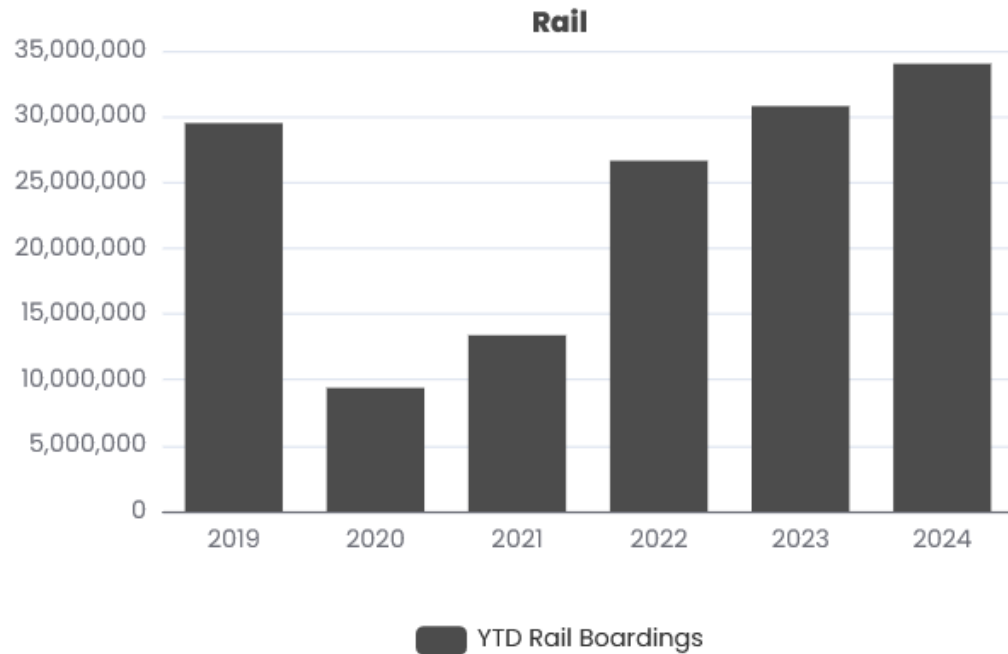
RTP Performance Dashboard and Key Trends

Transit ridership is recovering



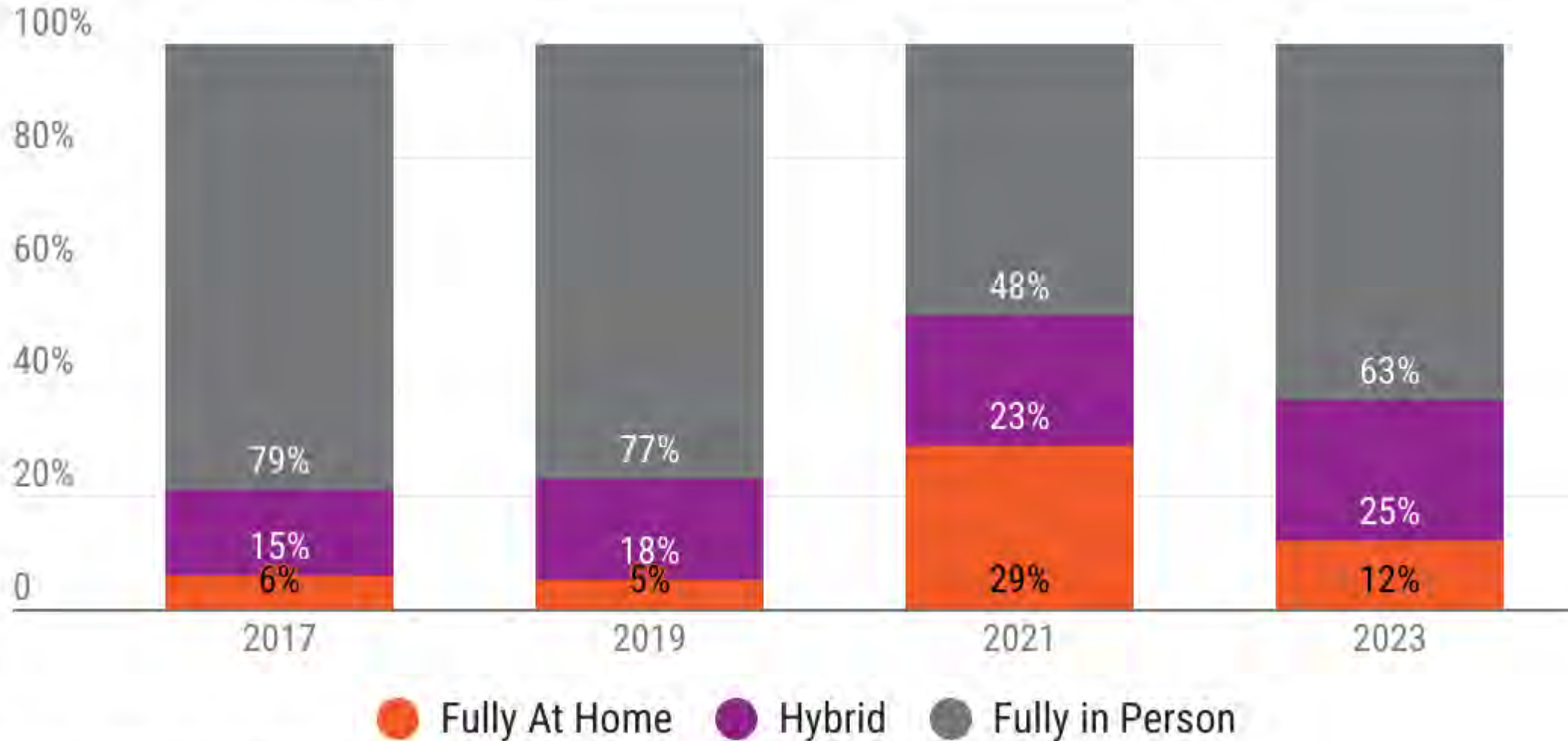
RTP Performance Dashboard and Key Trends

Varies by mode



RTP Performance Dashboard and Key Trends

Work from Home Status



Source: PSRC Regional Household Travel Survey 2017, 2019, 2021 & 2023



Ongoing and Upcoming Work

- Development of next Regional Transportation Plan underway, to be adopted in May 2026
 - Key priorities include maintenance and preservation, transportation finance, post-pandemic travel behavior
 - Analysis of system needs and gaps
- Adopt Regional Safety Action Plan May 2025
- Next PSRC funding competitions
- Continued housing work
 - Annual monitoring, pursuit of Housing Research Center
- Legislative tracking



Challenges Ahead

- Federal funding landscape, reauthorization of transportation act
- Rising costs
 - Increased backlog in roadway maintenance, increased cost per mile
 - Costs have increased for maintenance, preservation and operations across modes – roadways, culverts, bridges, bicycle/pedestrian infrastructure, transit service hours, etc.
- Continued decline of gas tax revenues, increase in overall fuel economy of fleet
- Evolving post-pandemic travel behavior



Thank You!

Kelly McGourty

Director of Transportation Planning

kmcgourty@psrc.org (206) 971-3601



Puget Sound Regional Council