



TRAFFIC SAFETY AND THE SAFE SYSTEM APPROACH

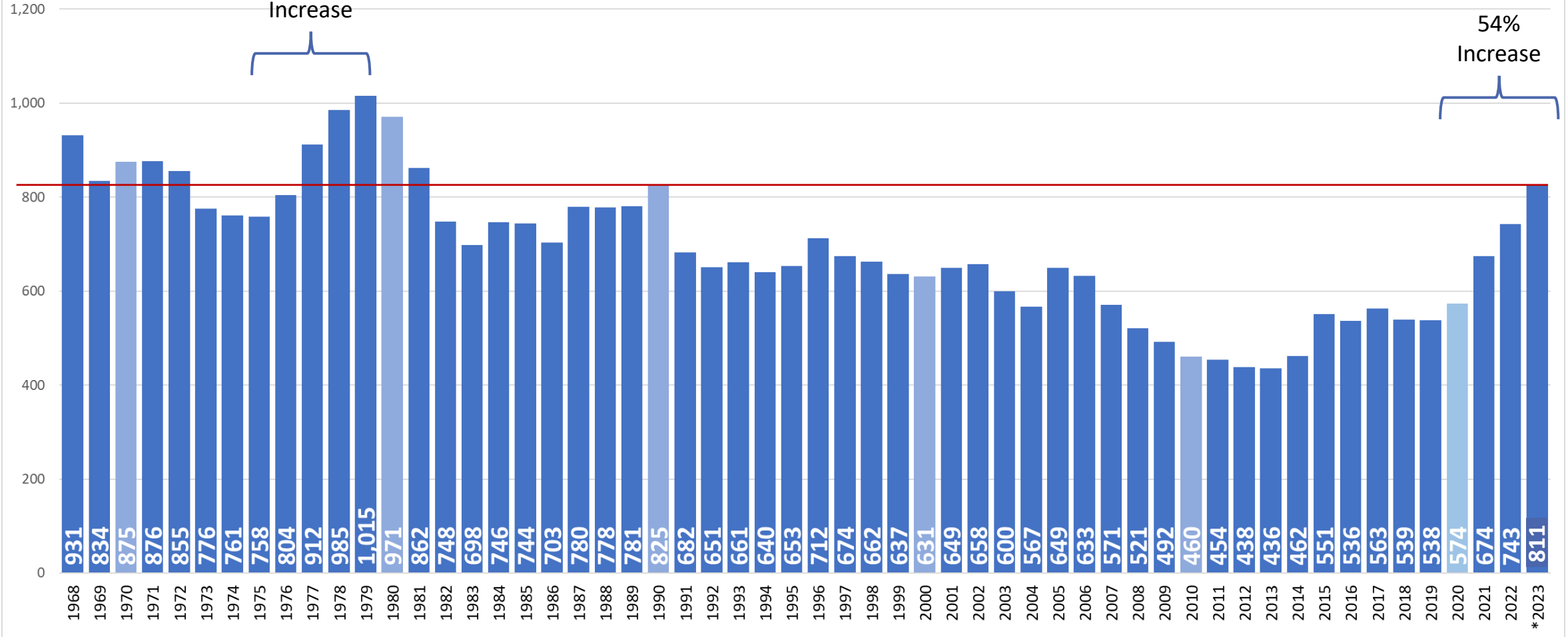
Shelly Baldwin, Director, Washington Traffic Safety Commission

Presentation for the Washington State Transportation Commission

May 8, 2024

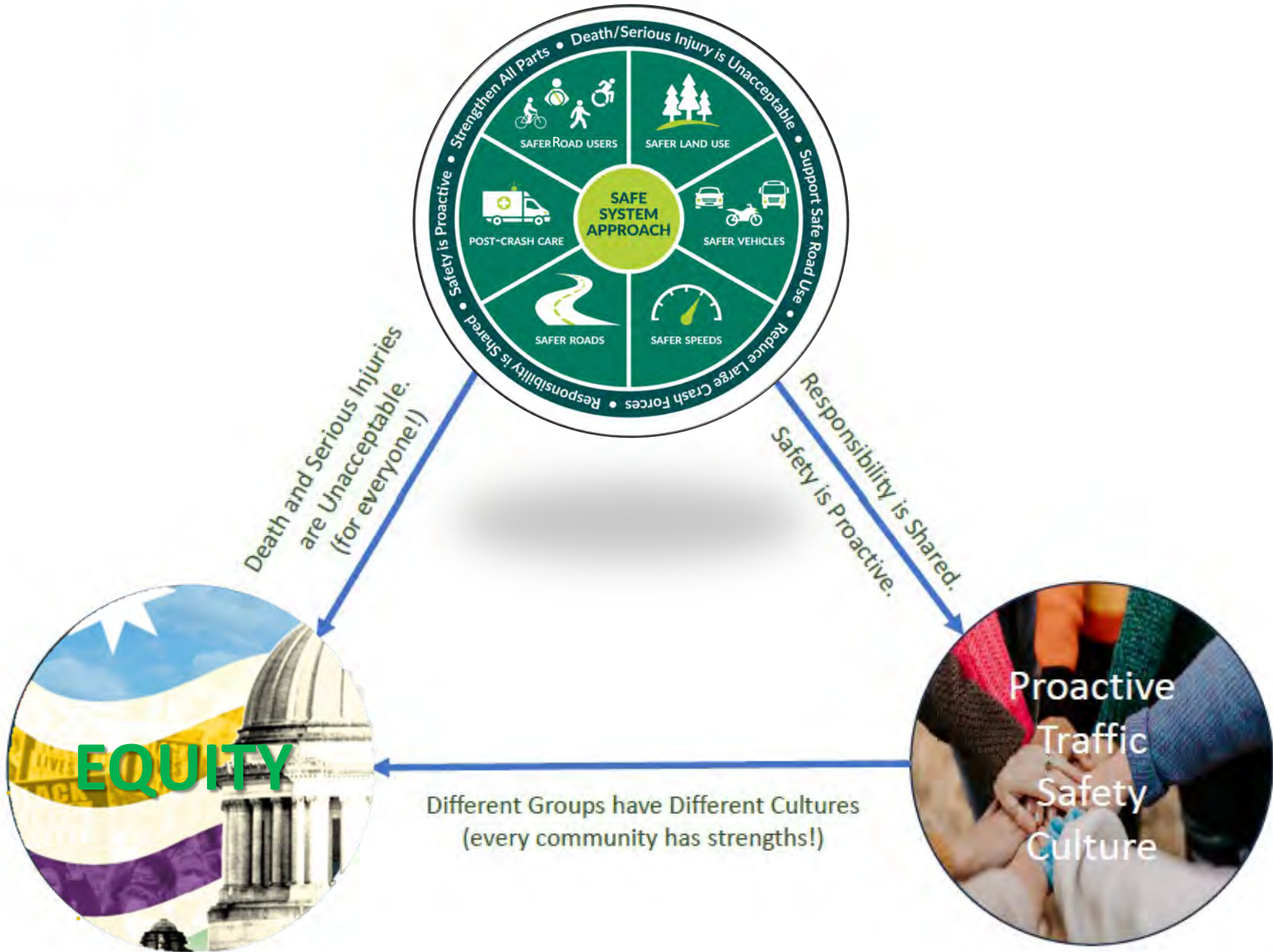
Washington State Traffic Fatalities 1968 - Present

Source: WTSC Historical Counts, CFC Files

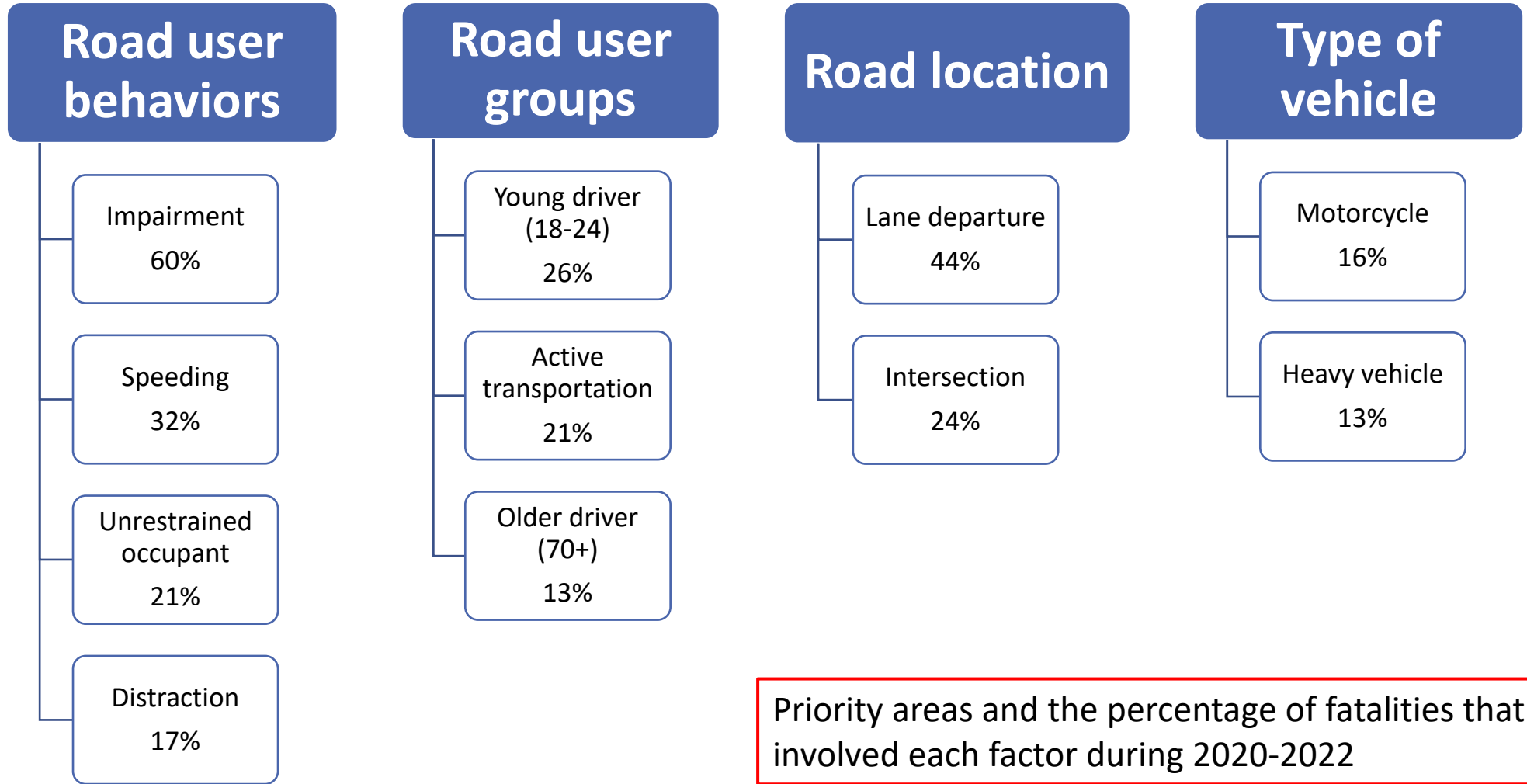


*2023 data is an unofficial estimate, incomplete, subject to change.

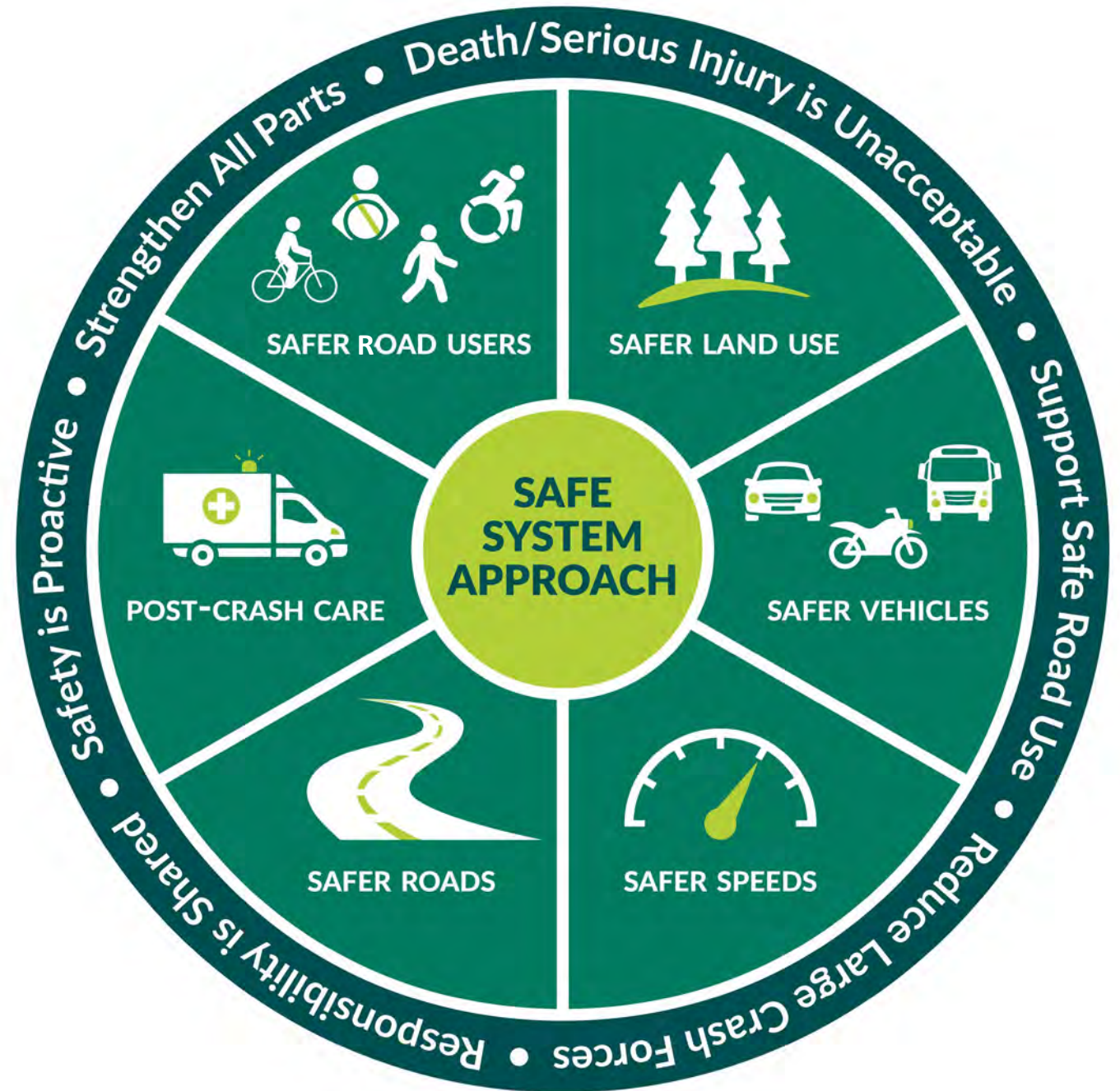
WASHINGTON STRATEGIC HIGHWAY SAFETY PLAN 2024 - 2029



TARGET ZERO PLAN PRIORITY AREAS (2024)

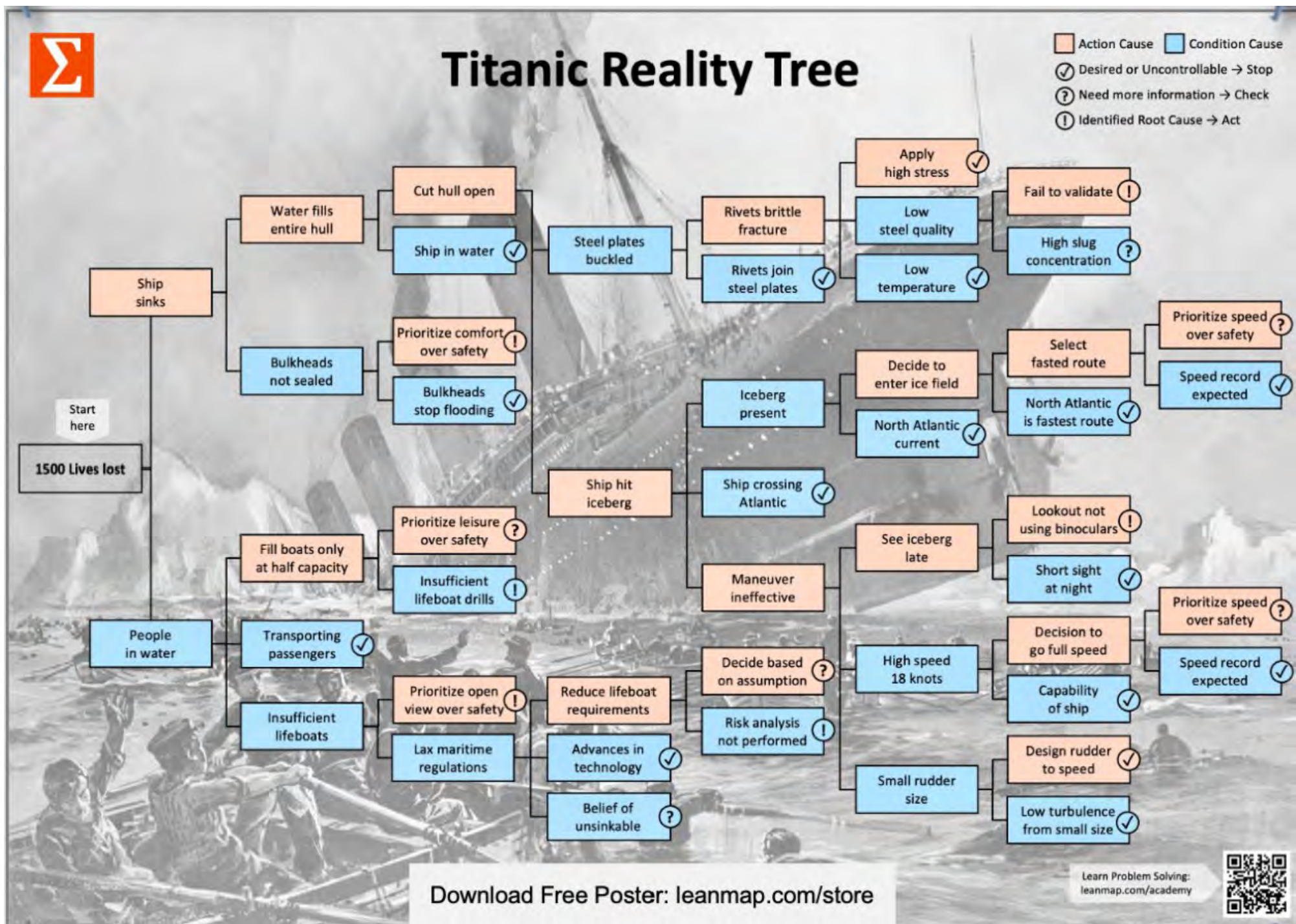


WA SAFE SYSTEM APPROACH



1,500
PEOPLE
DIED

WHY?



Thank You

Shelly Baldwin, Director

sbaldwin@wtsc.wa.gov | (360) 725-9899