



Statewide Transportation Safety Challenges

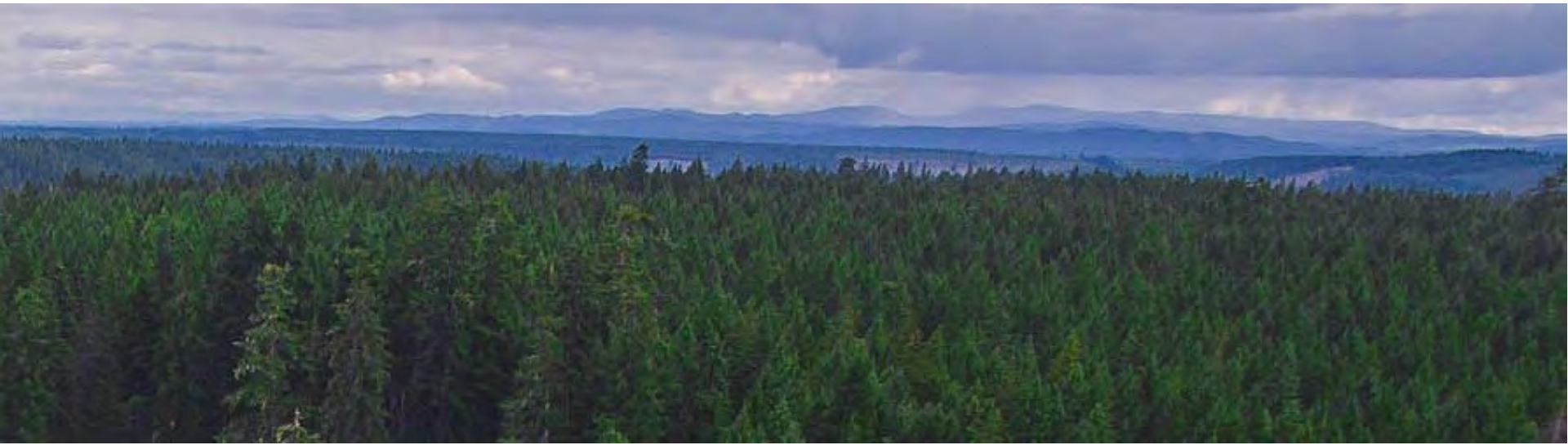
WTSC Data Updates and Preparing for a 0.05 BAC per se Limit

Pam Pannkuk, Deputy Director

Staci Hoff, Ph.D., Research Director

Edica Esqueda, Impaired Driving Program Manager

December 12, 2023



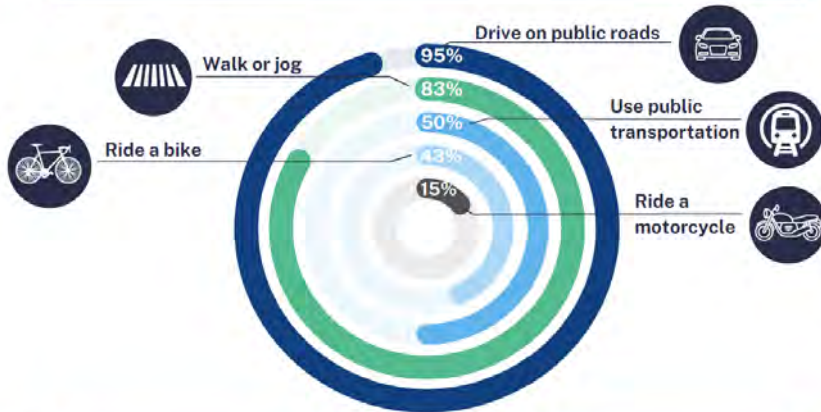
WTSC Data Updates

WTSC ANNUAL TRAFFIC SAFETY SURVEY YEAR ONE

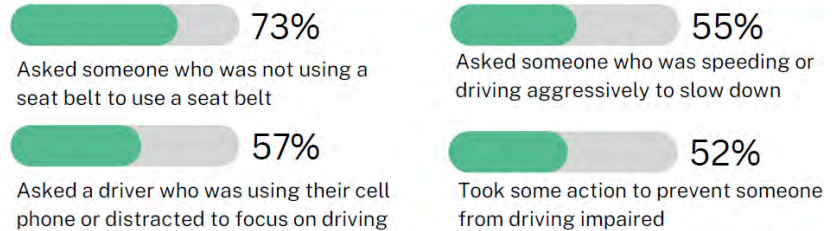
- The 104-question survey developed by the Center for Health and Safety Culture at Montana State University.
- The Address-Based Sampling (ABS) method was developed by the Social and Economics Research Center at Washington State University.
- Contract awarded to Market Decisions Research, LLC:
 - Combined an ABS sample with an online panel sample for better response targeting and oversampling.
 - Conducted the survey in English and Spanish March-August 2023.
 - Analyzed all survey responses, developed infographics, a data compendium, and full report.

INFOGRAPHICS – STATEWIDE + 17 TARGET ZERO MANAGER REGIONS

How do people use public roads?



Public Interventions on Unsafe Driving Practices



Adults who feel it is safe to...



Phone Use While Driving



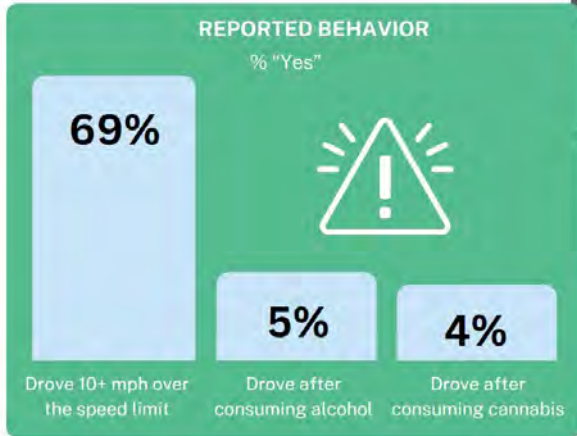
Belief in Zero Tolerance for Road Harm



<https://wtsc.wa.gov/statewide-survey-infographics/>

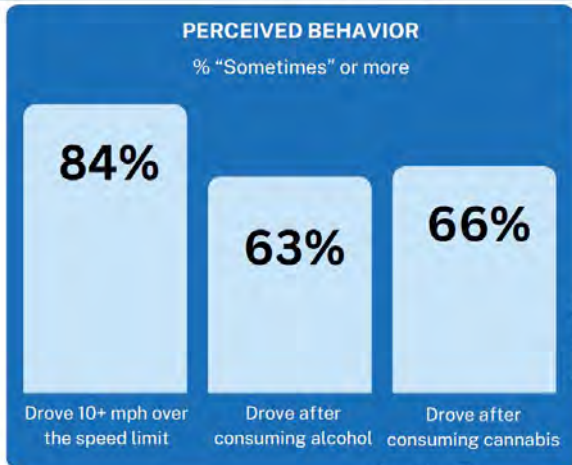
INFOGRAPHICS – CONT

Self-Reported High-Risk Driving Behavior



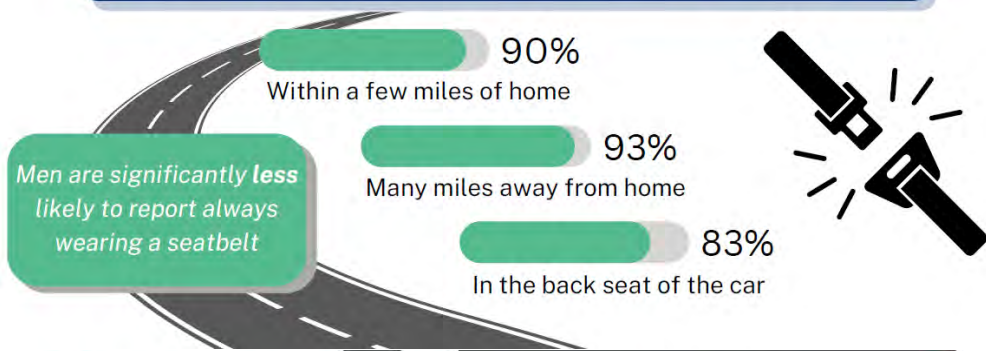
SPEED
LIMIT
55

Perceived Frequency of High-Risk Driving Behavior in Community





Few drivers admit to driving under the influence, yet a majority suspect it's common in their community

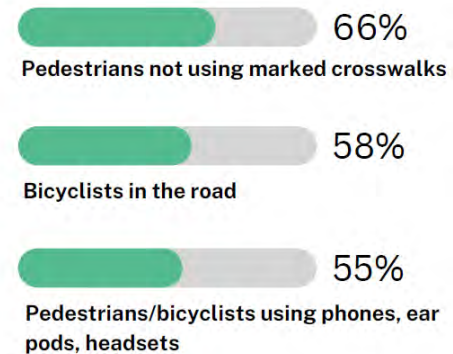
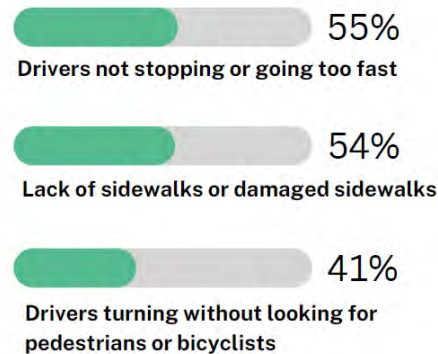
Where and when adults consistently buckle up



Most commonly reported experiences involving pedestrians and cyclists

Pedestrian and cyclists' experiences on public roads 

Drivers' experiences around pedestrians and bicyclists 



ADDITIONAL SURVEY MODULES

- Family Rules/approval
- Employer Policies
- Intervention comfort
- Risks to Motorcyclist Safety
- How dangerous is it to...
- How likely to be caught by police for...
- Support for traffic safety law enforcement



FOR MORE SURVEY RESULTS

- Infographics

- <https://wtsc.wa.gov/statewide-survey-infographics/>

- Technical Documentation

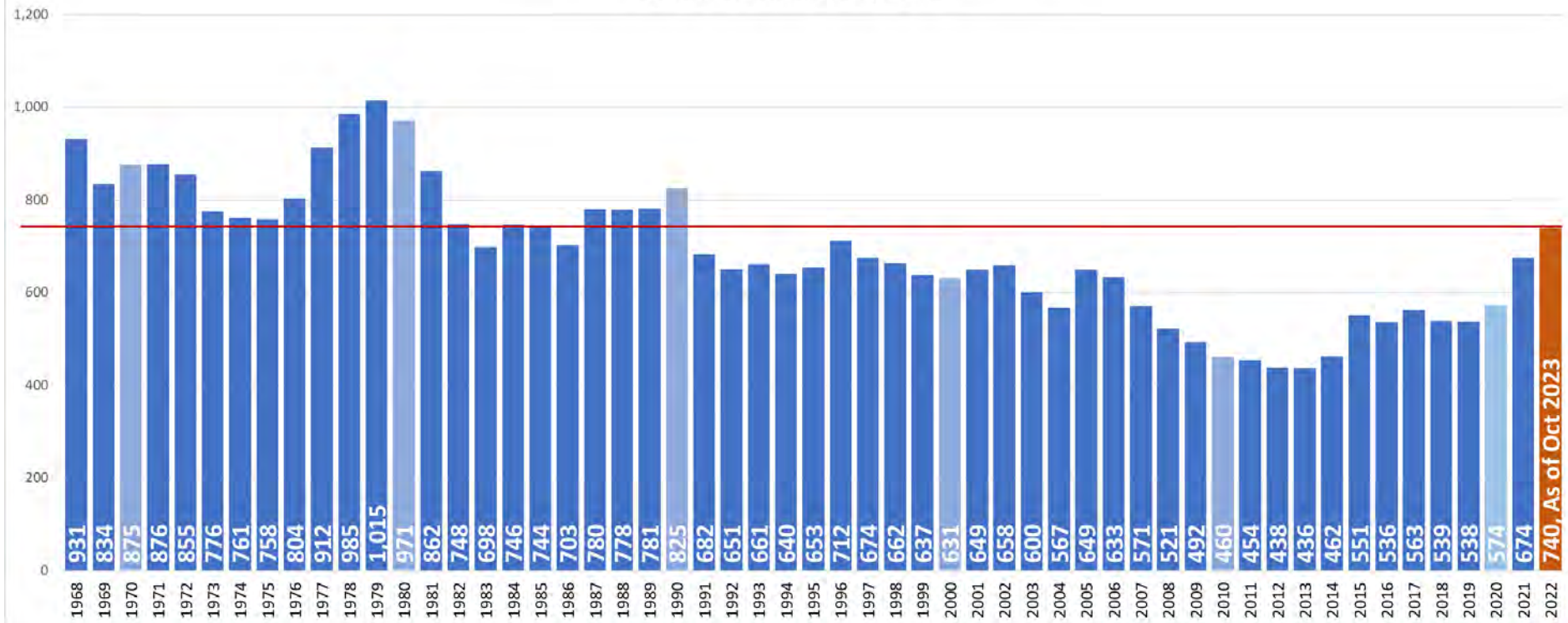
- <https://wtsc.wa.gov/statewide-survey-technical-docs/>
- Survey methodology and sampling plans
- Survey instrument
- Data Compendium – Full analyzed survey results

- Coming Soon! Survey Result Dashboards!

- <https://wtsc.wa.gov/dashboards/>

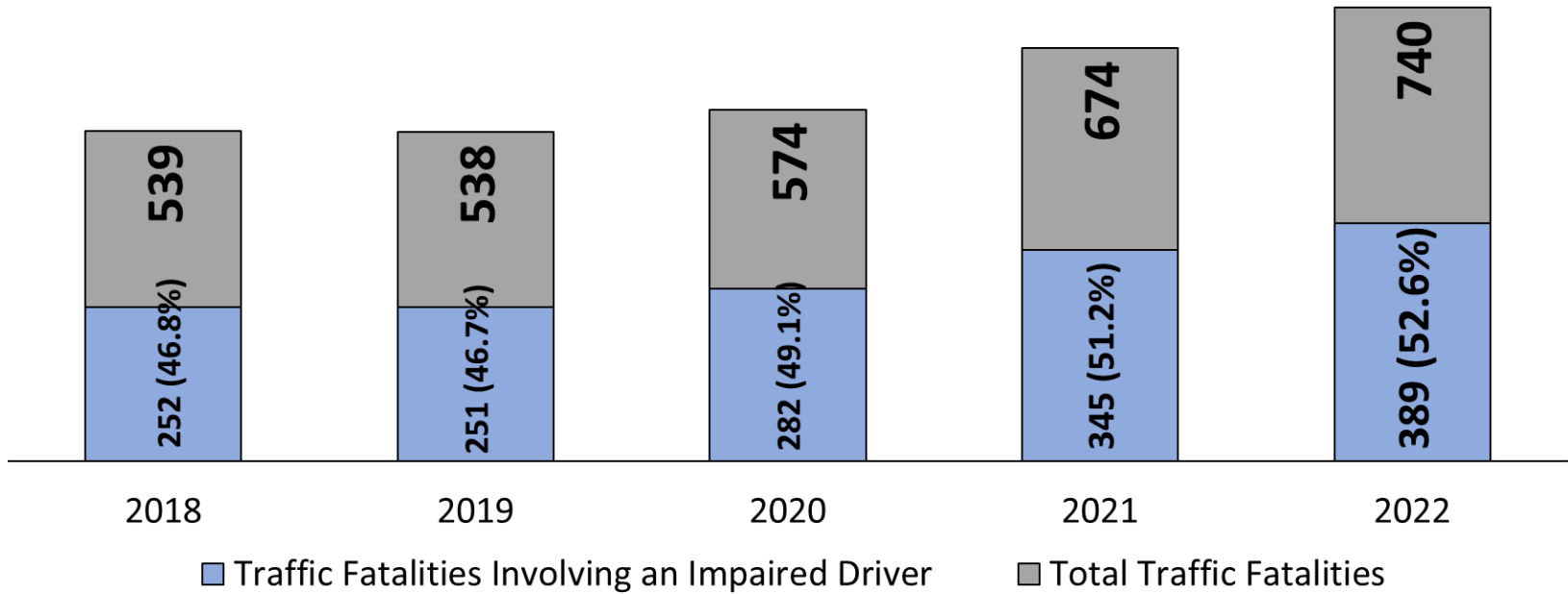
Washington State Traffic Fatalities 1968 - Present

Source: WTSC Historical Counts, CFC Files

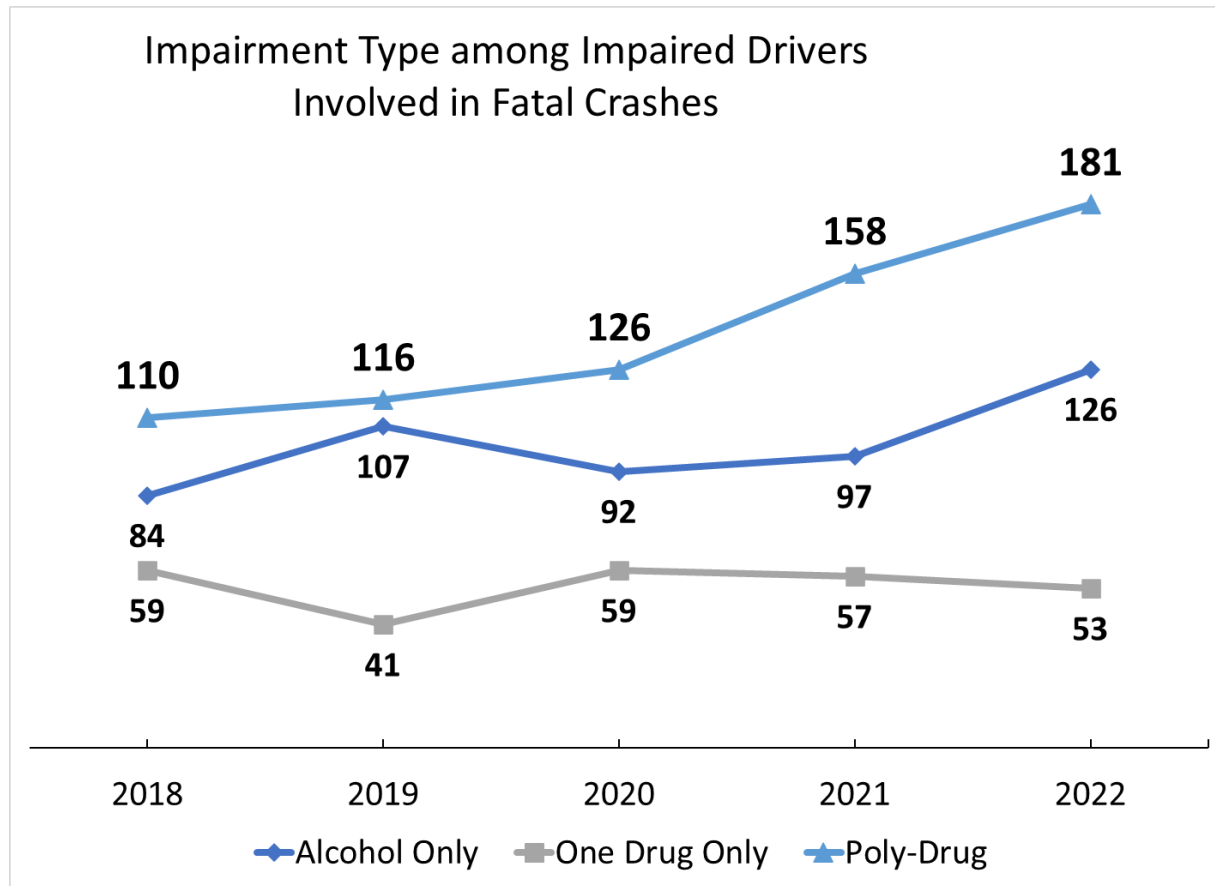


- Traffic fatalities are at the highest level since 1990
- Year-over-year increases since 2020 not seen since the late 1970s

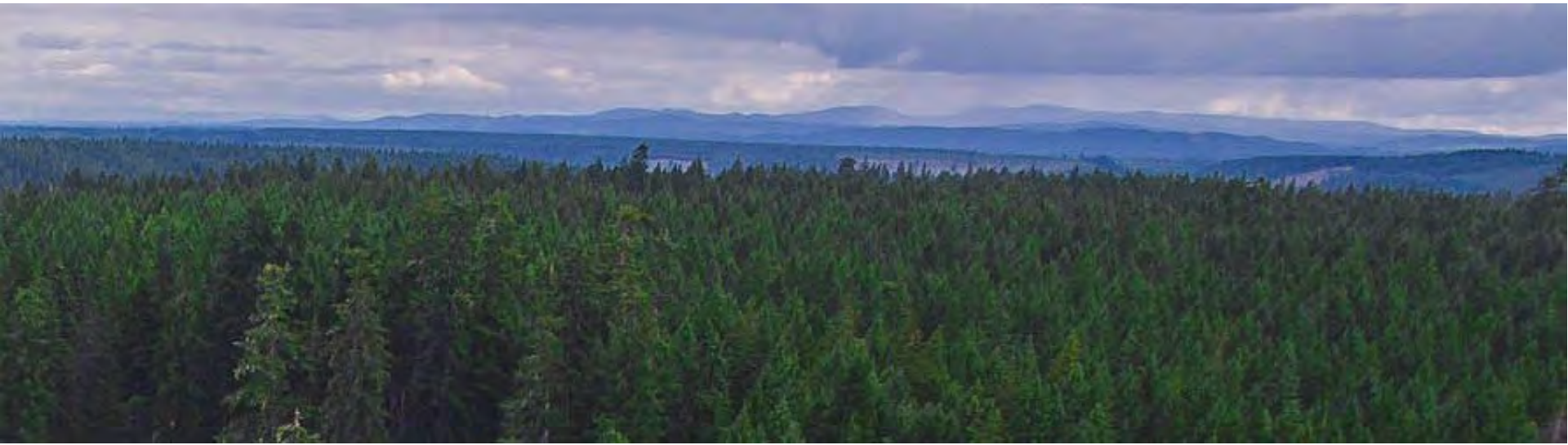
Traffic Fatalities Involving an Impaired Driver and Total Fatalities in Washington



- Driver impairment in fatal crashes is increasing and was involved in more than half of fatal crashes in 2022, killing nearly 400 people.



- Poly-drug impaired drivers are the most common type of impaired driver in fatal crashes, and the number of poly-drug drivers in fatal crashes are at the highest number in history.



Preparing for 0.05 BAC per se Limit

EFFECTIVE COUNTERMEASURES FOR REDUCING IMPAIRED DRIVING

Preventative:

Lower the Blood Alcohol Concentration (BAC) limit for DUI to 0.05 percent (NTSB's Most Wanted)

Publicized sobriety checkpoints (NHTSA 5-Star)

Responsive:

Roadside Oral Fluid Screening for Impairing Substances (NTSB Recommendation)

Mandatory Substance Abuse Assessments for DUI Offenders (NHTSA 5-Star)

Ignition Interlock Installations and Compliance (NHTSA 5-Star)

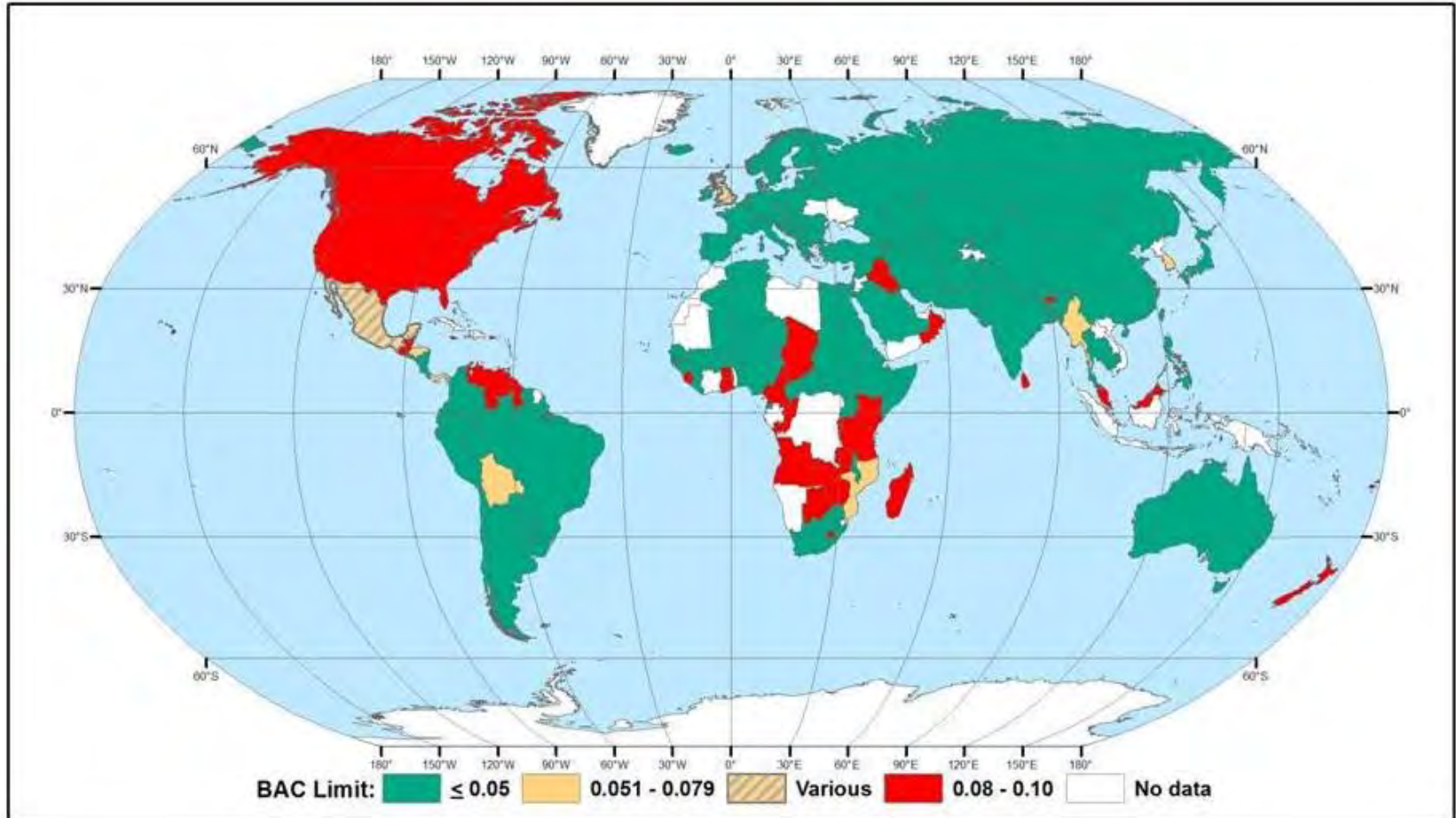
Report to the Legislature 2023 <https://wtsc.wa.gov/download/16165/>



WHY WA SHOULD ADOPT THE 0.05 PER SE BAC LIMIT

- Virtually all drivers are impaired at 0.05
- Crash risk increases significantly starting at 0.05 and above
- 84.5% of the World's population lives in places with BAC limits of 0.05 or below
- Countries and states that have implemented 0.05 laws have seen significant reductions in impaired driving and crashes with an average reduction of 11.1% in alcohol-related fatal crashes
- The impact of 0.05 laws are largely preventative, urging people to plan and use alternatives to driving after drinking
- Countries with high alcohol consumption (like the U.S.) can have low rates of impaired driving when effective policies are in place

COUNTRIES WITH 0.05 BAC LIMITS (IN GREEN)



Source: <https://www.normthurston.com/dui/>

Questions

Pam Pannkuk, Deputy Director

Staci Hoff, Ph.D., Research Director

Edica Esqueda, Impaired Driving Program Manager