

Climate Program

Washington State Transportation Commission

Sarah Fox, Climate Program Manager

Gary Idleburg, Mitigation Lead

Michael Burnham, Resilience Lead

Alicia McAfee, Fellow

07/18/2023



Washington State
Department of
Commerce

We strengthen communities



HOUSING AND HOMELESSNESS



INFRASTRUCTURE AND BROADBAND



SMALL BUSINESS ASSISTANCE



ENERGY



PLANNING AND TECH ASSISTANCE



COMMUNITY SERVICES AND FACILITIES



CRIME VICTIMS AND PUBLIC SAFETY



ECONOMIC DEVELOPMENT

Climate Element

Climate planning is a new goal of the Growth Management Act

Adds two sub-elements:

- **Mitigation** (GHG Emissions Reduction) mandatory for 11 counties and their cities over 6,000 pop.
- **Resilience** mandatory for all fully planning jurisdictions.

Applicable counties	2025	2026	2029
○ Benton		X	
○ Clark	X		
○ Franklin		X	
○ King			X
○ Kitsap			X
○ Pierce			X
○ Skagit	X		
○ Snohomish			X
○ Spokane		X	
○ Thurston	X		
○ Whatcom	X		

Environmental Justice

- **Climate Element** must:
 - **Prioritize EJ**
- **Land Use Element** must avoid worsening environmental health disparities.
- **Transportation Element** must create multimodal levels to achieve EJ goals
- **Grants** for community-based organizations to advance participation of overburdened communities in planning process



New Roles for Commerce

May submit Climate Mitigation sub-element for approval

- Effective date would be **when approved** by Commerce
- Appeals to the Growth Management Hearings Board would be **limited to non-compliance with guidance.**
- GHG reduction element **not subject** to administrative or judicial appeal

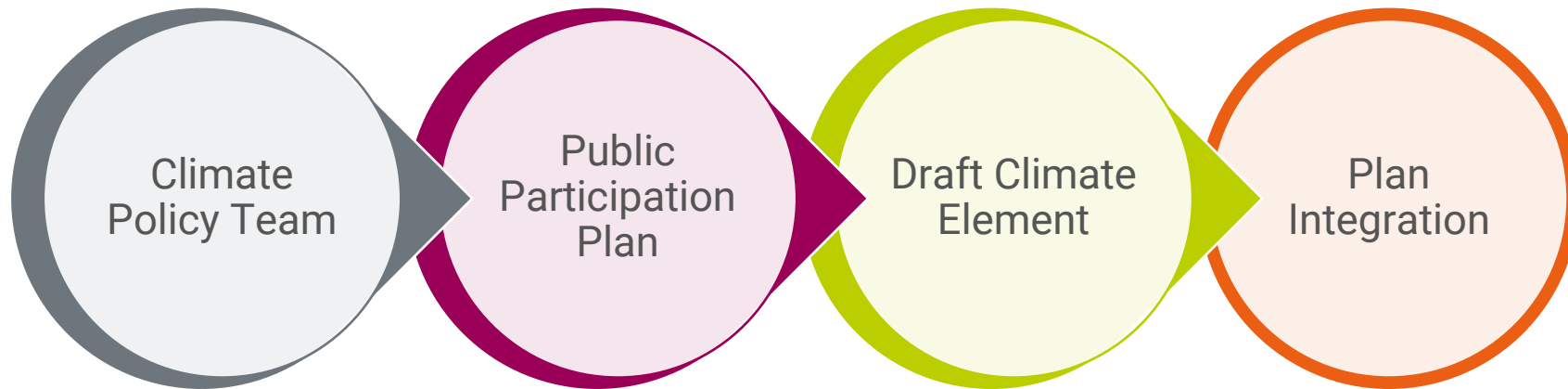


Climate Element Guidance



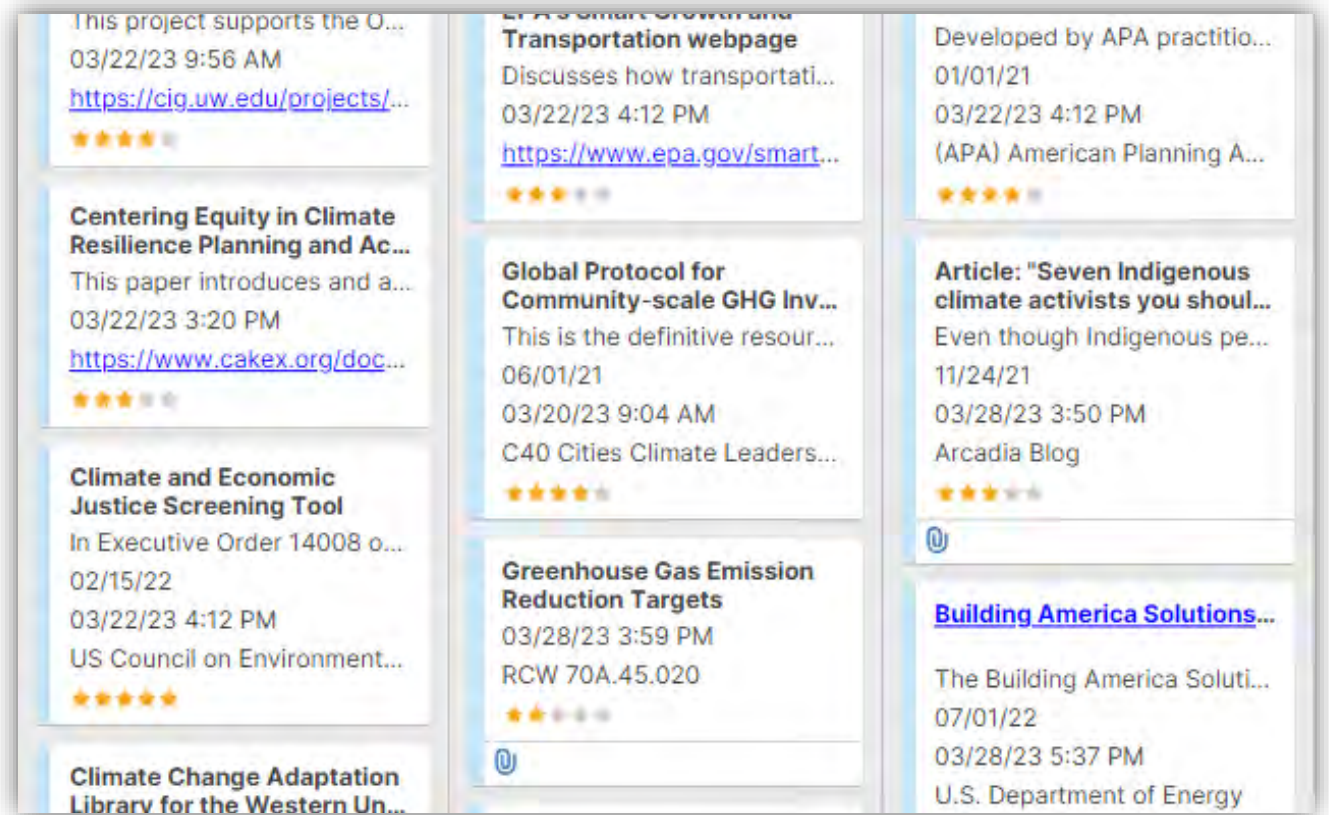
Climate Planning Guidance

- Climate Element Planning Guidance is available [online](#)
- Due on 12/31: Intermediate guidance based on HB 1181



Climate Resource Guide

- Climate planning videos, manuals and websites
- Guide includes:
 - Type: Mitigation or Resilience
 - Description and how it might be helpful
 - Rating system for the most useful resource for new planners



Resilience Sub-element

Guidance



Resilience Sub-element

Climate Resilience:

“The ongoing process of anticipating, preparing for, and adapting to changes in climate and minimizing negative impacts to our natural systems, infrastructure, and communities.”

— **RCW 70A.65.010**



Resilience Sub-element



Greenhouse Gas Reduction Sub-element

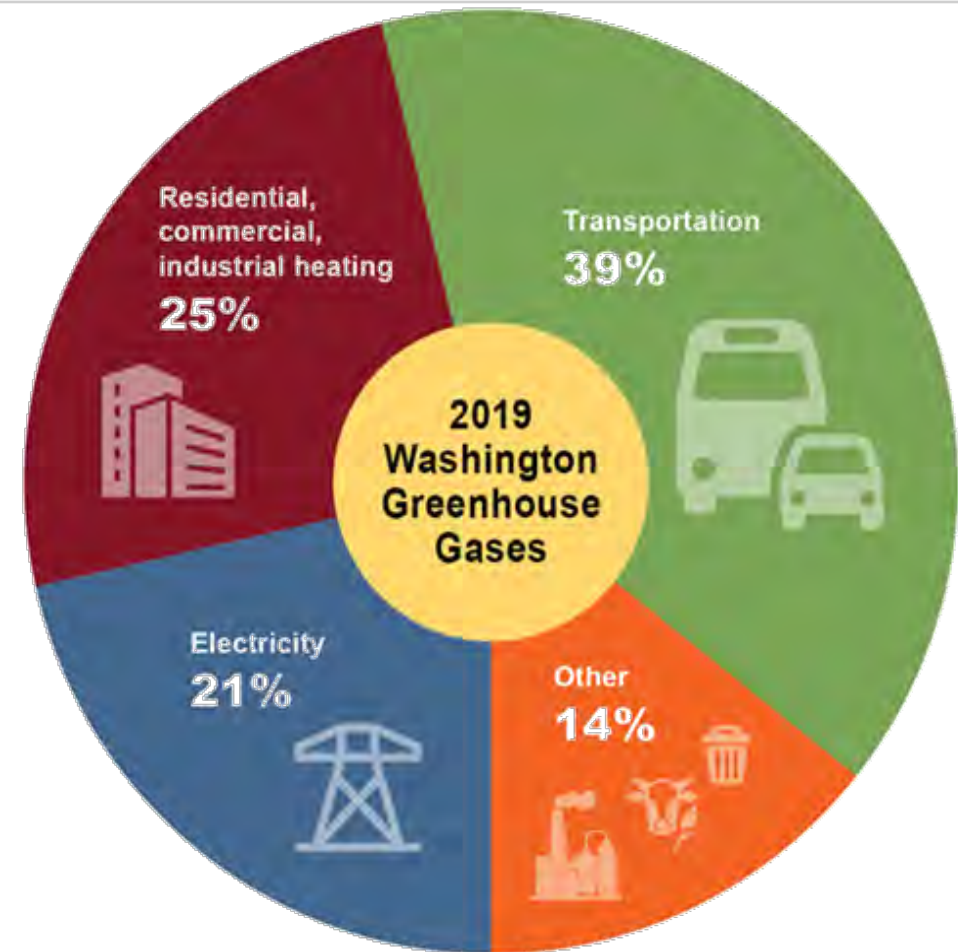
Guidance



Greenhouse Gas Emissions Reduction

Definition - GHG emissions reduction:

Actions taken to reduce or eliminate the emissions of greenhouse gases (present and future) in order to reduce the rate and extent of climate change damage.

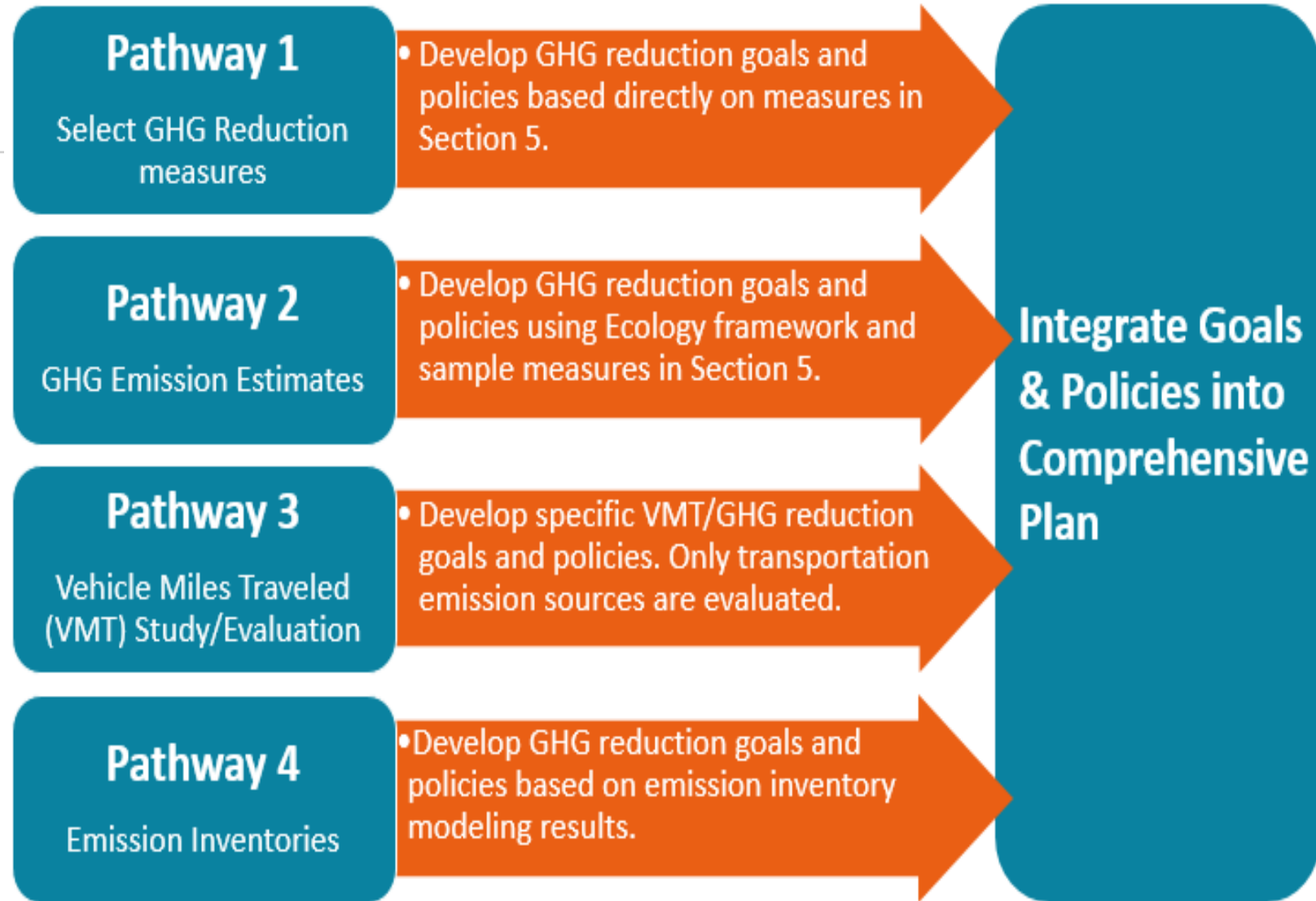


Department of Ecology-Statewide Emission Inventory
2019

Greenhouse Gas Emissions Reduction

How to achieve GHG emission reductions?

- ✓ Evaluations
- ✓ Emission Inventories
- ✓ Goals & Policies



Model Climate Measures



Model Climate Measures

- Over 200 measures (goals & policies)
- Available online via Smart Sheets dashboard
- Could download as an excel file
- Searchable by multiple attributes

Measure/Policy/Action	Supplemental Description (B)	Entry #	Pairing Policy
▶ Climate Sector Waste Management			
▶ Climate Sector Water Resources			
▼ Climate Sector Zoning & Development			
Foster higher-intensity land uses in mixed-use urban villages and transit corridors.	Develop overlay or master plans for urban villages and transit corridors - "nodes and corridors" planning. Also, make any necessary code changes (zoning, design standards, parking, etc.) and develop incentives.	32	32-1.0
<i>Ensure public transit stops and stations are located at or near (e.g., within 600 ft.) shopping centers and malls.</i>	Goals and policies in transportation and land use elements should be consistent and complimentary. Successful implementation of this measure should be coordinated with subarea or corridor planning.	236	32-1.1

Model Climate Measures

Vetted by collaborative partners:

- Effectiveness
- Longevity
- Multiple co-benefits
- Equity lens (in progress)

Bonus content:

- Supplemental information
- Grouping/pairing
- Implementation tools
- Progress tracking

Thank you!

Sarah Fox

CLIMATE PROGRAM MANAGER

Sarah.fox@commerce.wa.gov

360.725.3114

Gary Idleburg

MITIGATION LEAD

Gary.Idleburg@commerce.wa.gov

Michael Burnham

RESILIENCE LEAD

Michael.Burnham@commerce.wa.gov

Alicia McAfee

FELLOW

Alicia.McAfee@commerce.wa.gov



Washington State
Department of
Commerce

www.commerce.wa.gov

