










WASHINGTON STATE FERRIES

Service Restoration Update

John Vezina, Director of Planning, Customer and Government Relations
Washington State Transportation Commission Meeting
June 21, 2023

BY THE NUMBERS

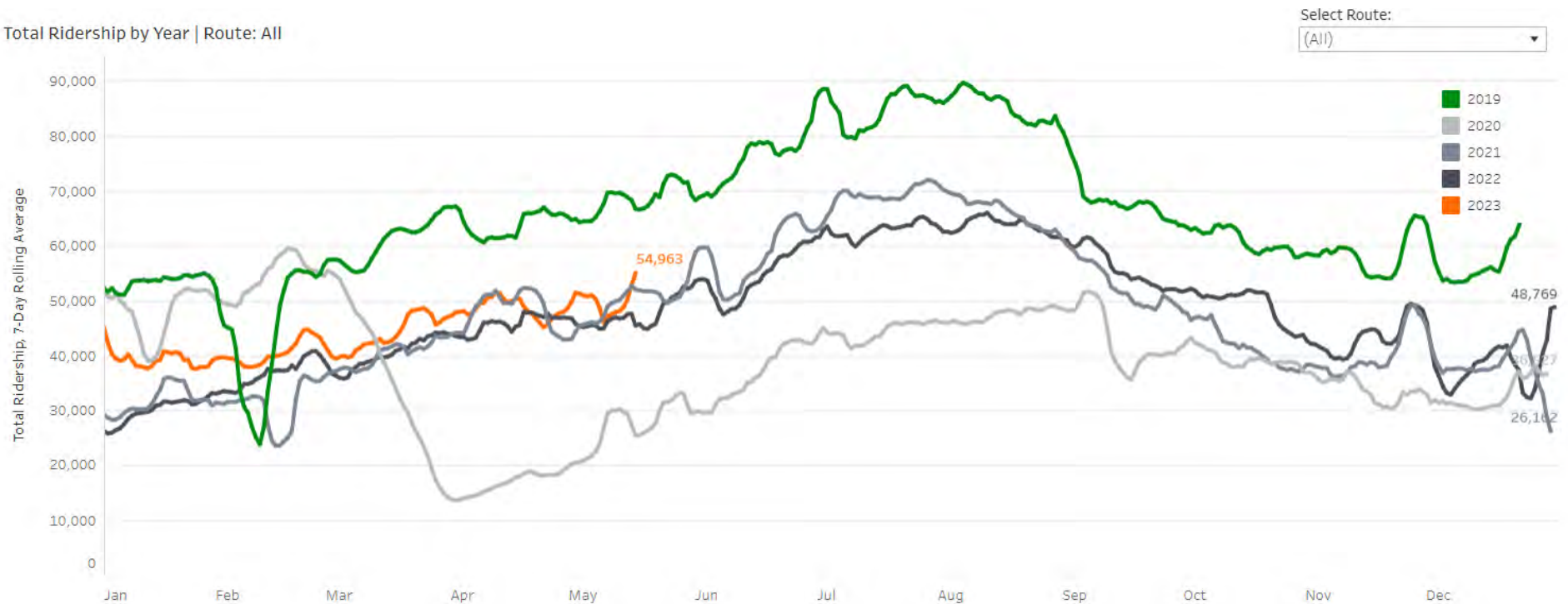
Highlights and accomplishments from Jan. 1 – May 31, 2023

-  6,887,863 total riders
-  3,552,147 drivers (with vehicle)
-  3,335,716 vehicle passengers and walk-ons
-  58,273 trips completed
-  312,557 service miles
-  97.7% trip reliability
-  25 Lifesaving events
-  926 medical priority loads
-  191 Whale sightings reported



RIDERSHIP

Total 2023 systemwide ridership compared to previous years

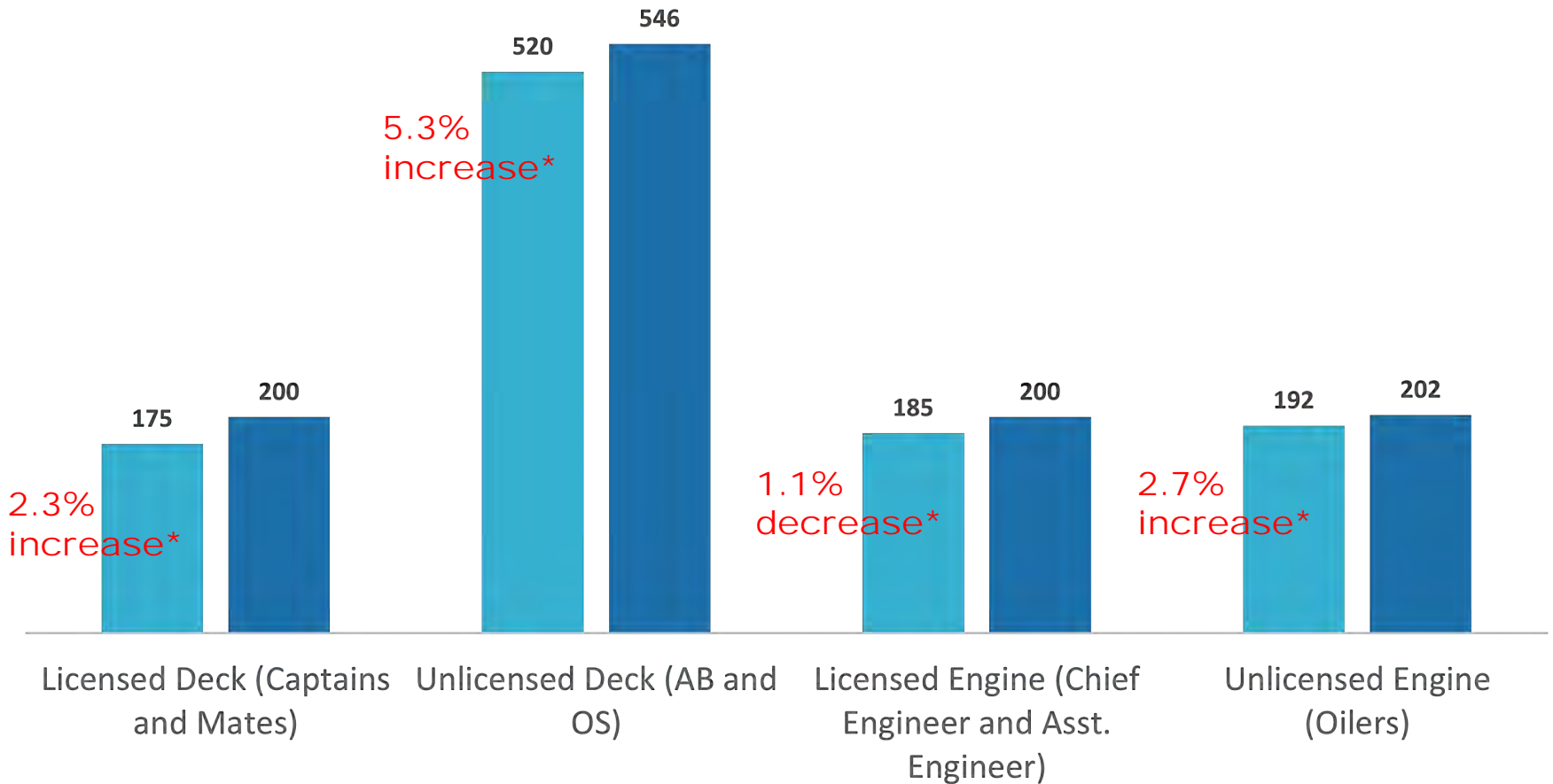


^ Note: This graph compares preliminary ridership data for 2023 to the same weekday in previous years, using the average of the last 7 days. Total ridership is estimated based on fares collected. Hover over the lines to see total riders, vehicles, and walk-on counts for each day.

CREW AVAILABILITY

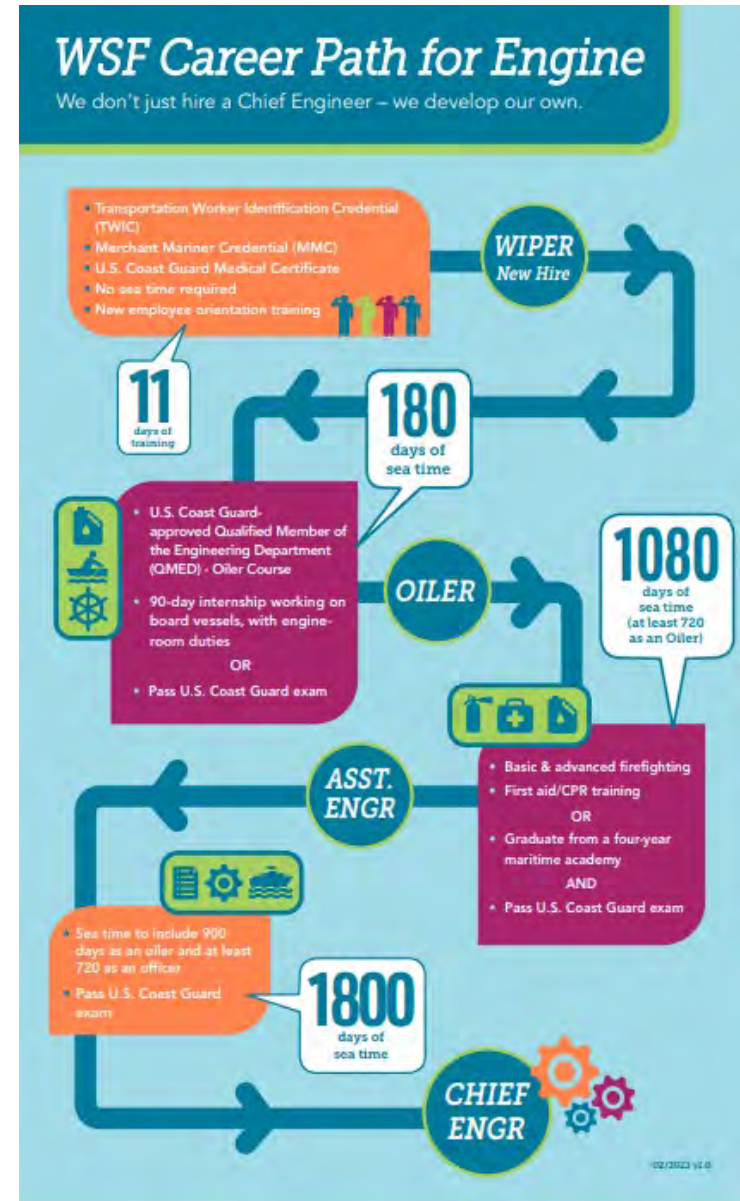
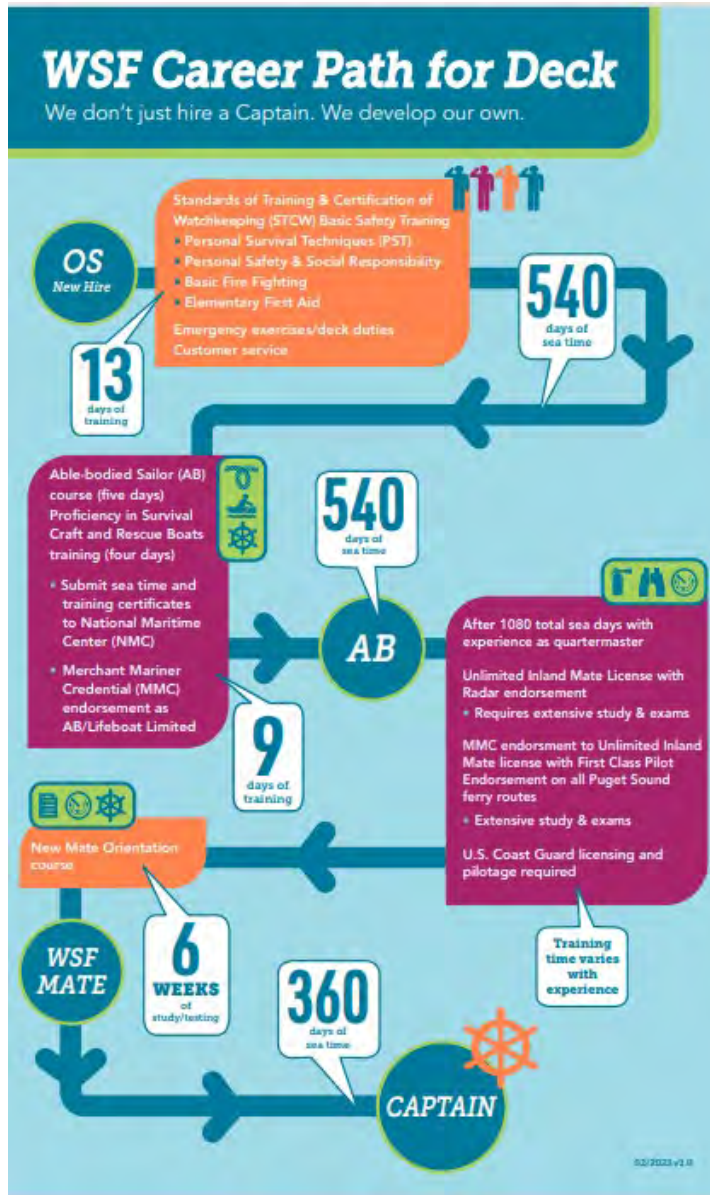
Washington State Ferries: Staffing Needs

■ Current Staffing Levels (as of 4/30/23) ■ Target Staffing Levels



* Percent change since January 2023

CAREER PATH – WE DEVELOP OUR OWN



WE'RE HIRING!

<http://wsdotjobs.com/ferries>



COME SAIL WITH US!

Washington State Ferries is hiring.

Offering competitive wages, benefits,
and career growth.

Apply now at
WSDOTjobs.com/ferries



COME SAIL WITH US!



Washington State Ferries
is hiring.

WSDOTjobs.com/ferries



COME SAIL WITH US

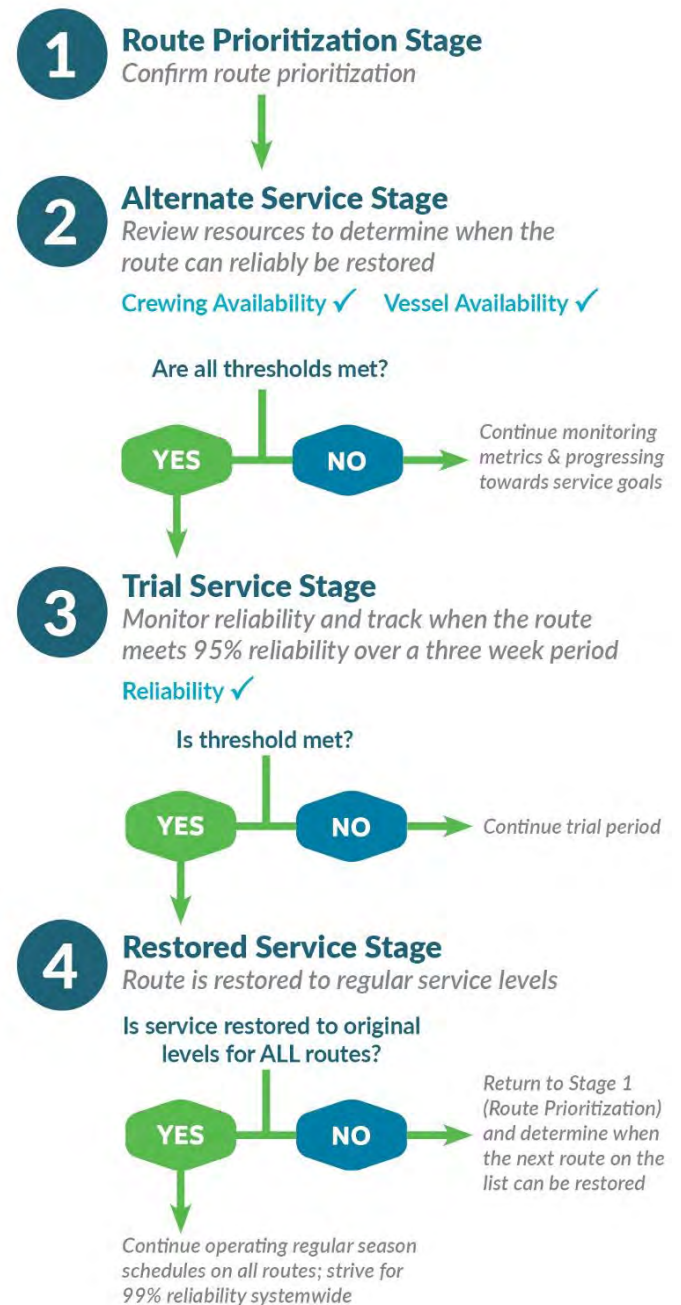
Washington State
Ferries is hiring.

SERVICE RESTORATION PROCESS

Route prioritization

- Anacortes/San Juan Islands
- Seattle/Bainbridge
- Mukilteo/Clinton
- Edmonds/Kingston
- Fauntleroy/Vashon Island/Southworth
- Seattle/Bremerton
- Port Townsend/Coupeville
- Anacortes/Sidney BC

* Point Defiance/Tahlequah remains on one-boat service



SERVICE RESTORATION PROGRESS

Route	Restoration Stage
ANACORTES/ SAN JUAN ISLANDS	4 Regular Service
SEATTLE/ BAINBRIDGE	4 Regular Service
MUKILTEO/CLINTON	4 Regular Service
EDMONDS/KINGSTON	4 Regular Service
FAUNTLEROY/ VASHON/ SOUTHWORTH	2 Alternate Service
SEATTLE/ BREMERTON	2 Alternate Service
PORT TOWNSEND/ COUPEVILLE	2 Alternate Service
ANACORTES/ SIDNEY, B.C.	No Service
POINT DEFIANCE/ TAHLEQUAH	Regular Service

Timeline for service restoration

Anacortes/San Juan Islands
Restored Jan. 2022

Seattle/Bainbridge
Restored April 2022

Mukilteo/Clinton
Restored May 2022

Edmonds/Kingston
Restored Feb. 2023

Fauntleroy/Vashon/Southworth
Estimated restoration: Early-2024

Seattle/Bremerton
Estimated restoration: Early-2024

Port Townsend/Coupeville
Estimated Restoration: Spring 2024

Anacortes/Sidney, B.C.
Estimated restoration: 2030

QUESTIONS?

For additional information on
Washington State Ferries,
please contact:

John Vezina, Director of Planning,
Customer and Government Relations

vezinaj@wsdot.wa.gov

