

WASHINGTON STATE FERRIES

Colman Dock Plaza Naming

Patty Rubstello, Assistant Secretary

Phillip Narte, Tribal Liaison

May 17, 2023

Washington State Transportation Commission Meeting

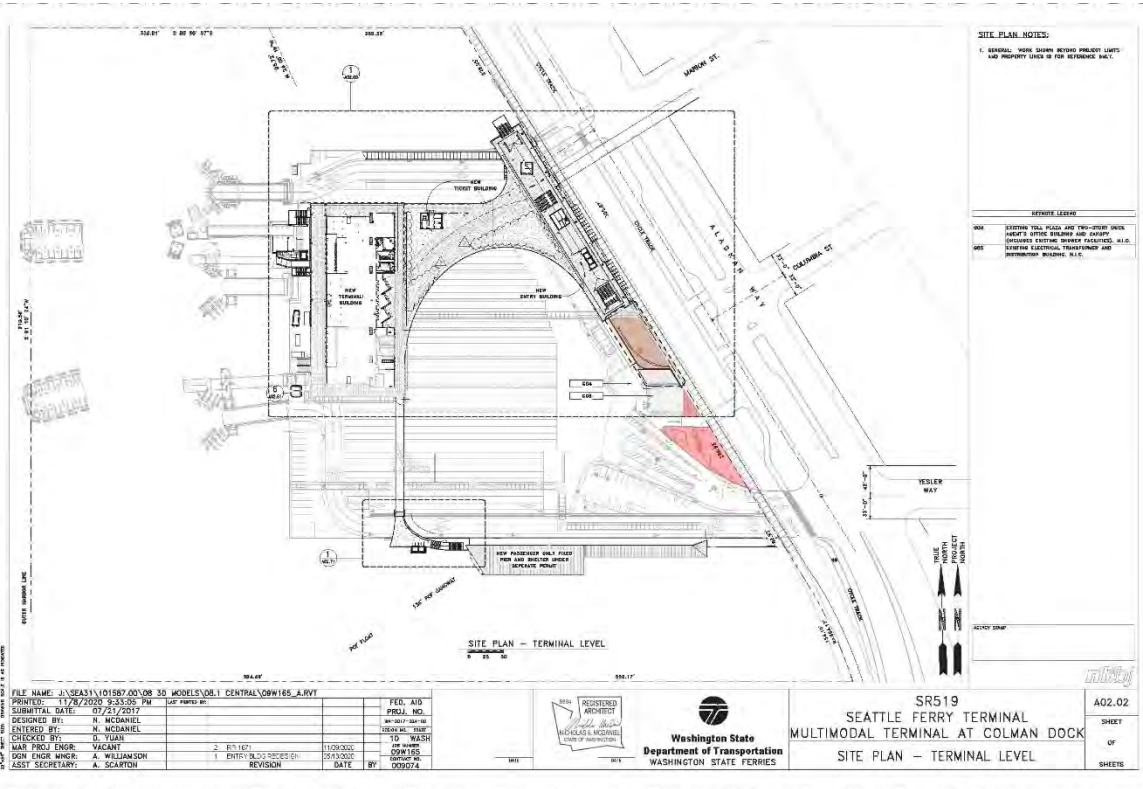
Colman Dock Consultation with Tribes

- WSDOT consults with tribes that are federally recognized with adjudicated treaty rights in the waters where our projects are located
- Two tribes are federally recognized with adjudicated treaty rights in Elliott Bay:
 - Suquamish Tribe
 - Muckleshoot Indian Tribe
- Consultation for the Colman Dock Project has included:
 - Completion of a Memorandum of Agreement for construction and additional over-water coverage
 - Ongoing coordination for in-water construction activities and barging
 - Opportunity to submit plaza names
 - Opportunity for tribal art

City of Seattle's celebration of Dzidzilalich, April 2023



Colman Dock Plaza Locations



Point of interest:
 In 2022 the city of Seattle designated portions of Alaskan Way with the honorary name Dzidzilalich which means “little crossing-over place” to honor the lands and shared waters of the Puget Sound Coast Salish People.

Colman Dock Proposed Plaza Names

South plaza (near Yesler Way)

- **sluʔwit**, a perforation for a canoe, a short cut, a canoe pass from the Muckleshoot Indian Tribe, letter dated Feb.14, 2023

North plaza (near Columbia Street)

- **ʔululali**, a place of traveling by water, from the Suquamish Tribe, Council Resolution 2022-161

Letters of Support

1. Alliance for Pioneer Square
2. ArtsWA
3. Bremerton Ferry Advisory Committee
4. Commute Seattle
5. FASPAA (Ferry Agents, Supervisory and Project Administrators Association)
6. Green Marine
7. Historic Seattle Waterfront Association
8. International Organization of Masters, Mates and Pilots Association
9. King County Councilmember Joe McDermott
10. Kitsap Transit
11. Port of Seattle
12. Rep. Julia Reed
13. Seattle Metropolitan Chamber of Commerce
14. Seattle City Light
15. Seattle Office of the Waterfront
16. University of Washington Mobility Innovation Center
17. Washington Maritime Blue

Seeking WSTC Support

Based on WSF engagement with tribes, elected officials, interested stakeholders and the general public, WSDOT hopes for unanimous support from the WSTC on these proposed tribal plaza names.

Next Steps

- **May 2023:** Washington State Transportation Commission takes action on the proposed plaza names
- **May/June 2023:** Operational opening of the next key Colman Dock Project elements (entry building and elevated pedestrian walkway)
- **Aug/Sep 2023:** Completion of the Marion Street Pedestrian Bridge into the Colman Dock entry building
- **Summer/Fall 2023:** Facility dedication/celebration

Questions?



Patty Rubstello

Assistant Secretary

Washington State Ferries

Patty.Rubstello@wsdot.wa.gov