

# I-405/SR 167 ETLs Corridor Program Toll Rate Setting Process

**WASHINGTON STATE TRANSPORTATION COMMISSION**

EDWARD BARRY, P.E.  
WSDOT TOLL DIVISION DIRECTOR  
February 16, 2023

LISA HODGSON, P.E.  
I-405/SR 167 PROGRAM ADMINISTRATOR

# 50-miles of Managed System

## Near-term system updates:

### Openings in 2025:

- (A) I-405 Renton to Bellevue Widening Project
- (B) SR 167 Corridor Improvements Project

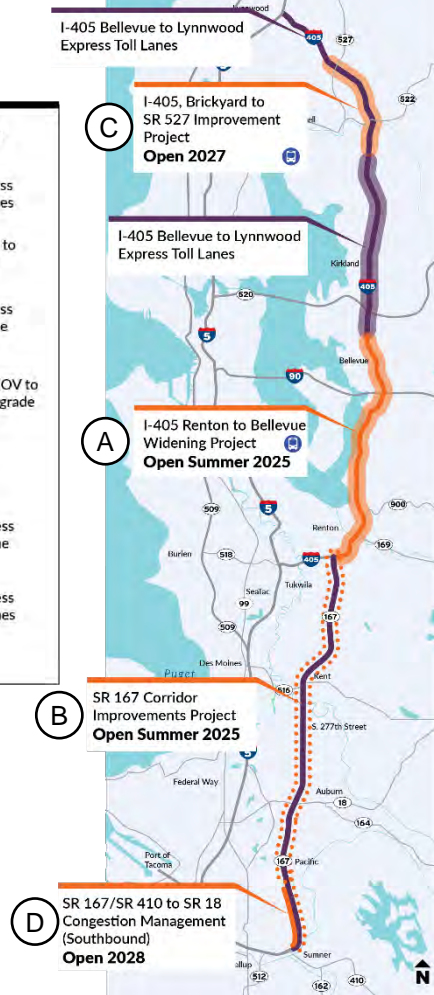
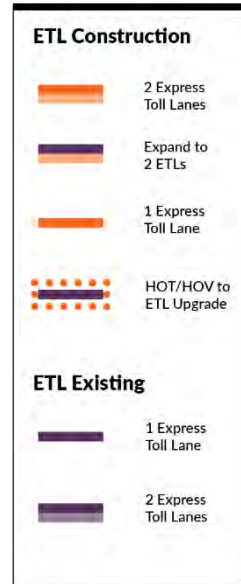
## On the horizon:

### Opening in 2027:

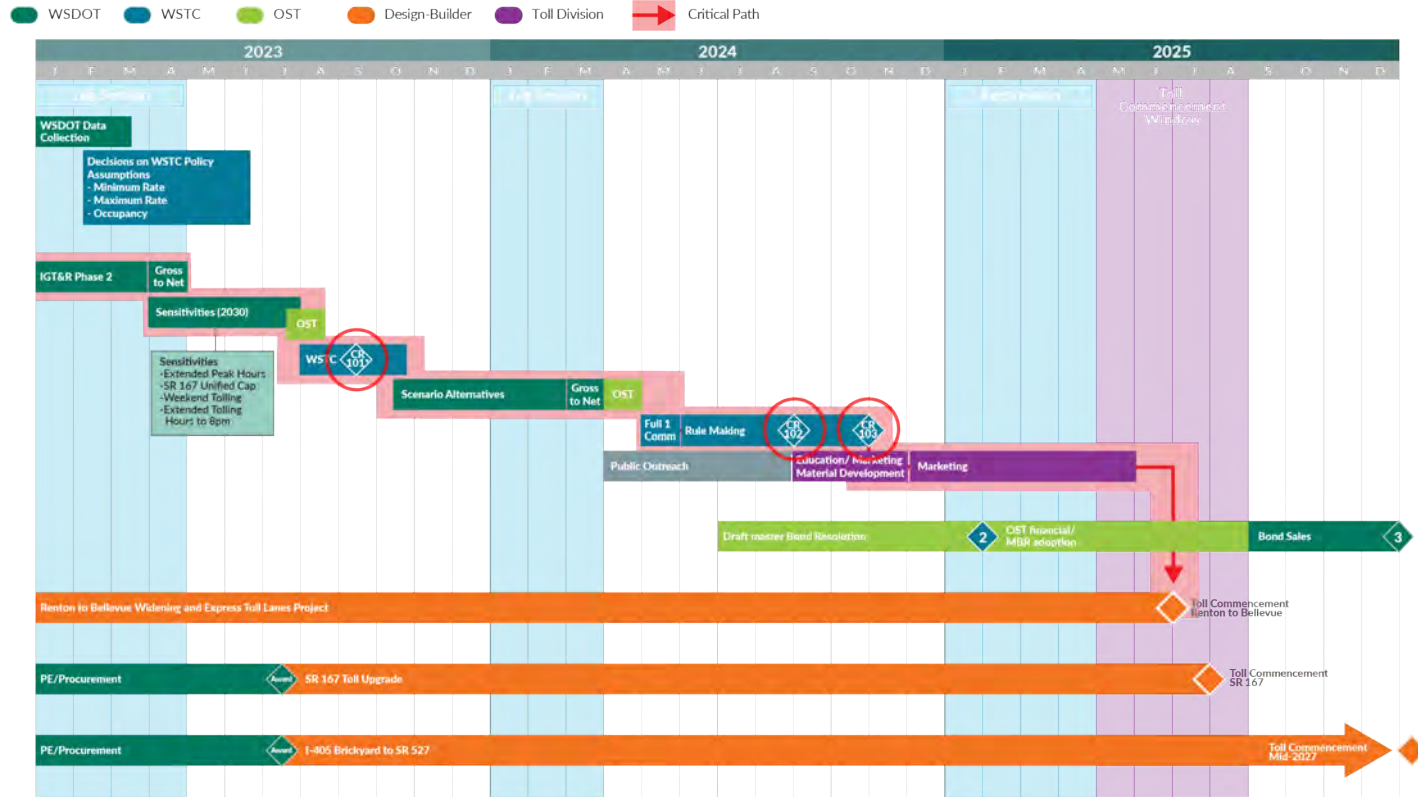
- (C) I-405, Brickyard to SR 527 Improvement Project

### Opening in 2028:

- (D) SR 167 / SR 410 to SR 18 Congestion Management (Southbound)



# Proposed Toll Rate Setting and Outreach



- 1. Propose options for public comment
- 2. Bond appropriation by legislature
- 3. Bond sales complete

SCHEDULE IS PRELIMINARY / DRAFT BASED ON MOST RECENT INFORMATION AVAILABLE.

\*EARLIEST FILING FALL 2023, LATEST FILING SPRING 2024.

# I-405/SR 167 Proposed Rate Setting and Outreach

Agency	Timeline	Description
WSTC	February 2023	I-405 rate setting kick-off with the Commission
WSTC	March – May 2023	Work with the Commission to establish policies, to inform the final scenarios (minimum & maximum rates, occupancy)
WSDOT	April – August 2023	On-going Traffic & Revenue analysis and several sensitivities Analysis
OST	Summer 2023	Draft preliminary finance results
WSDOT	Fall 2023 – Winter 2024	Scenario Package Analysis
WSTC	Spring 2024	Public Engagement
OST	Spring 2024	Draft preliminary finance results
WSTC	Spring-Fall 2024	Commission Rule-Making Process
WSDOT	Winter-Summer 2025	Educational Marketing Campaign
WSDOT	Spring-Summer 2025	Toll Commencement for both Renton to Bellevue & SR 167 Toll Upgrade

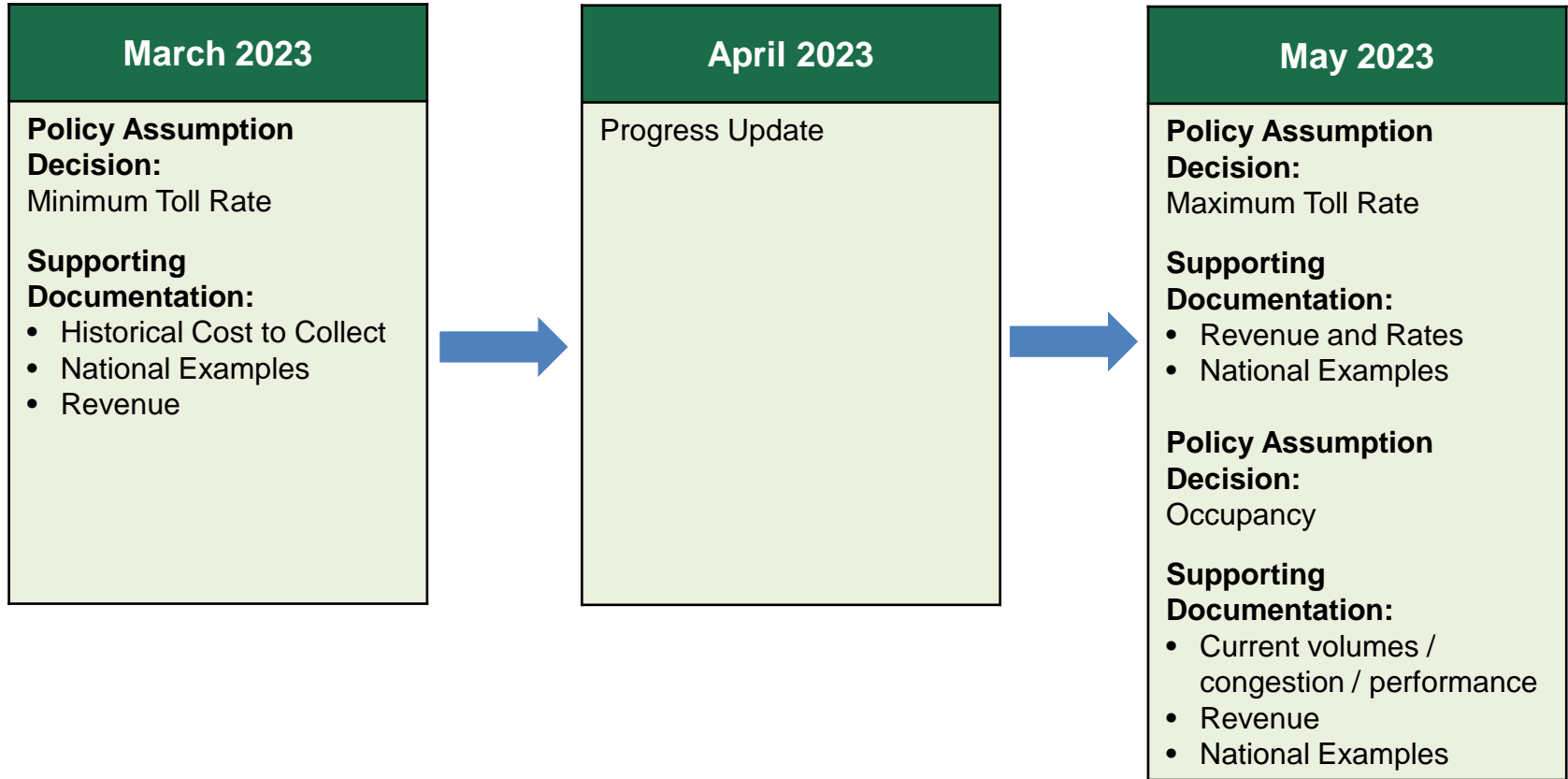
# Scenarios and Sensitivities

Full T&R Stream Analysis (2022 through 2056)							Sensitivity Scenarios under consideration (year 2030 ONLY)			
Scenario	I	II	III	IV	V	VI	II w/A	II w/B	V w/C	V w/D
Future Peak Period HOV Policy Assumptions	3-3-3	3-3-3	3-2-2	3-3-3	2-2-2	2-2-2	3-3-3	3-3-3	2-2-2	2-2-2
Future Toll Policy	Base*	Base*	Base*	Higher Cap	Base*	No Cap	Extended Peak Hours	SR 167 Unified Cap	Weekend Tolling	Extended Tolling Hours to 8pm

\*Base Assumptions: Minimum toll rate \$0.75; Maximum toll rate \$9.00/\$10.00

Other sensitivities?

# Upcoming Schedule



# Questions?

For additional information, please contact:

Edward Barry P.E.

WSDOT Toll Division Director

(206) 464-1217 or [BarryEd@wsdot.wa.gov](mailto:BarryEd@wsdot.wa.gov)