

2021 TRAFFIC FATALITY DATA OVERVIEW AND TRAFFIC FATALITY RATES DASHBOARD

Max Roberts, PhD

Research Associate, Research and Data Division,

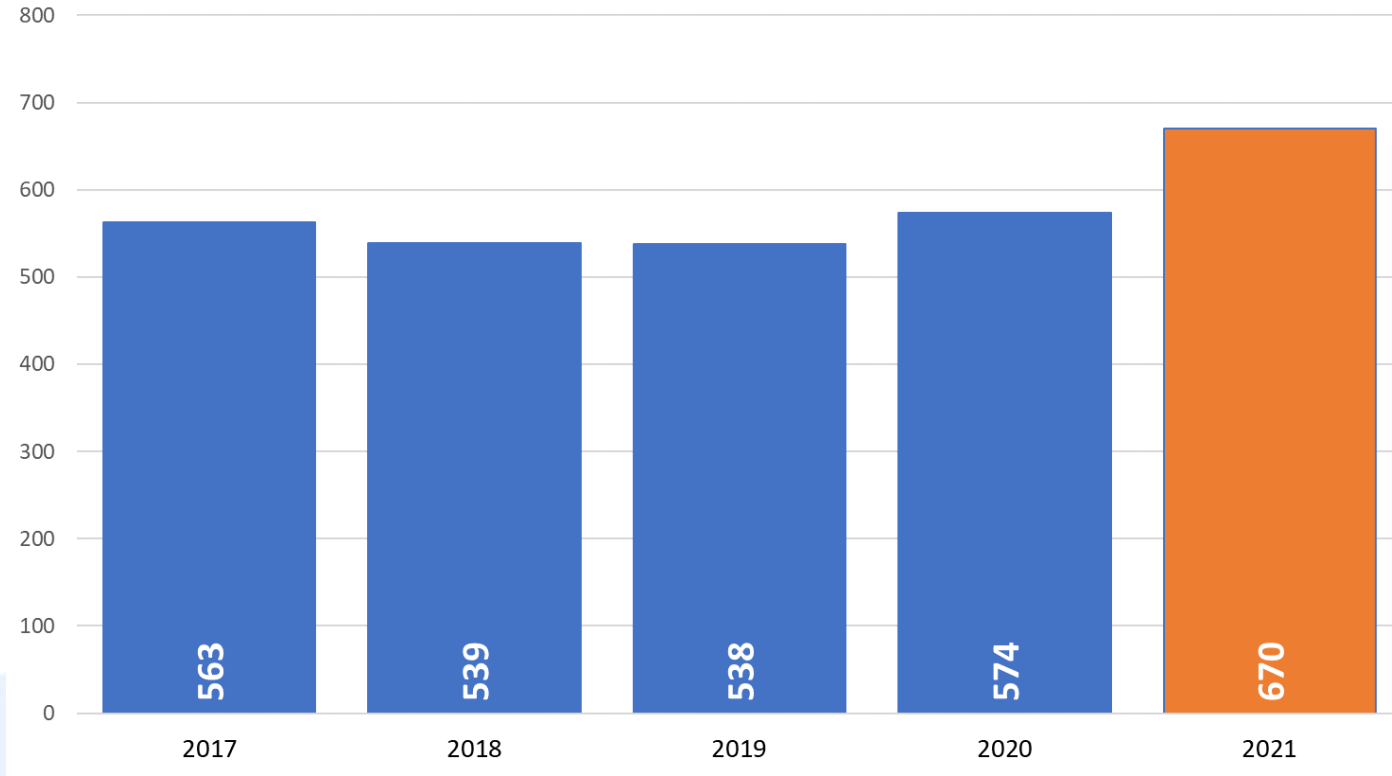
Washington Traffic Safety Commission

Washington State Transportation Commission meeting

December 13, 2022

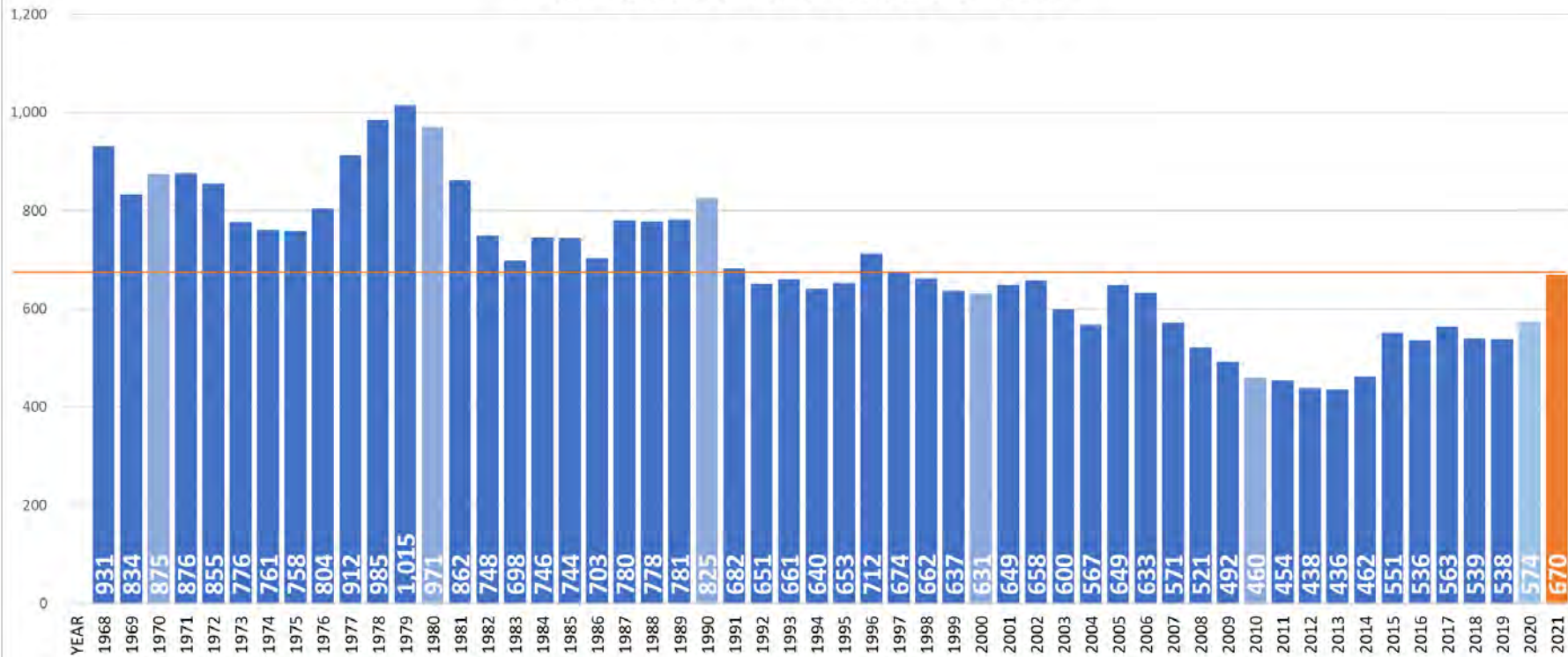


Washington State Traffic Fatalities 2017 - 2021



Note: 2021 data remain preliminary until January 2023


Washington State Traffic Fatalities 1968 - 2021



Note: 2021 data remain preliminary until January 2023

STATE OF THE STATE: WASHINGTON TRAFFIC FATALITIES

- wtsc.wa.gov → Research & Data → Traffic Safety Reports → General Traffic Safety
- http://wtsc.wa.gov/wp-content/uploads/dlm_uploads/2022/06/11_State-of-the-State-June-2022.pdf



TRAFFIC SAFETY COMMISSION

Brief No. 11
June 2022

State of the State: Washington Traffic Fatalities

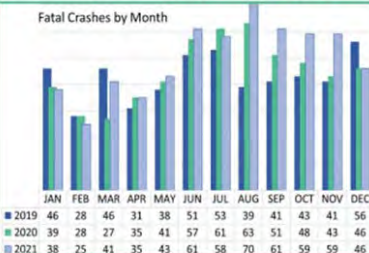
Traffic fatalities on Washington roadways are increasing. In just two years fatalities have increased 23 percent (from 538 in 2019 to 663 in 2021*) and is at the highest number in almost twenty years. While there were some expected and unexpected impacts from COVID-19 on traffic fatalities in 2020, in 2021 all high-risk behaviors and factors contributing to fatal crashes have increased. Pedestrian fatalities are at historical highs.

I care, because 1,775 people have died in traffic crashes in Washington since 2019. In 2020, traffic fatalities increased on local roads (city streets and county roads) but declined on interstates and highways. Traffic fatalities on local roads were sustained in 2021, but increased on interstates and highways.

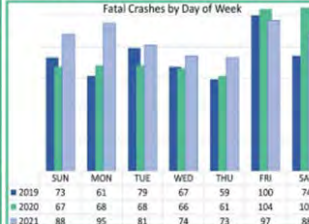
	2019	2020	% Change in 2020	*2021	% Change in 2021
All Fatalities	538	574	6.7%	663	15.5%
Impaired Driver Involved	241	274	13.7%	292	6.6%
Speeding Involved	152	173	13.8%	205	18.5%
Distracted Driver Involved	119	90	-24.4%	117	30.0%
Unrestrained Occupants	108	110	1.9%	149	35.5%
Motorcyclists	95	93	-2.1%	93	0.0%
Active Transportation Users	116	123	6.0%	158	28.5%
Driver Ages 16-17 Involved	9	22	144.4%	33	50.0%
Driver Ages 18-20 Involved	42	63	50.0%	65	3.2%
Driver Ages 21-25 Involved	102	84	-17.6%	126	50.0%
Driver Ages 70+ Involved	89	74	-16.9%	80	8.1%
Heavy Truck Involved	83	69	-16.9%	94	36.2%
Traffic Serious Injuries	2,254	2,428	7.6%	2,924	21.6%

	2019	2020	% Change in 2020	*2021	% Change in 2021
Interstate	60	54	-10.0%	87	61.1%
US highway	55	36	-34.5%	46	27.8%
State route	140	137	-2.1%	166	21.2%
County road	137	152	10.9%	155	2.0%
City street	114	145	27.2%	135	-6.9%
Other	7	15	114.3%	6	-60.0%

Fatal crashes are typically highest in the summer months and on weekends. From 2020-2021 the rise in fatal crashes was primarily concentrated in the months August—November. In 2020, there was a rise in fatal crashes occurring on Saturdays. However, in 2021 there was a smaller number of fatal crashes on Fridays and Saturdays and a rise in fatal crashes on Sundays and weekdays Mondays—Thursdays.



Month	2019	2020	2021
JAN	46	28	46
FEB	28	27	35
MAR	46	31	38
APR	31	38	51
MAY	38	51	53
JUN	53	39	41
JUL	41	43	41
AUG	43	41	56
SEP	41	48	43
OCT	43	41	56
NOV	41	46	59
DEC	56	46	46

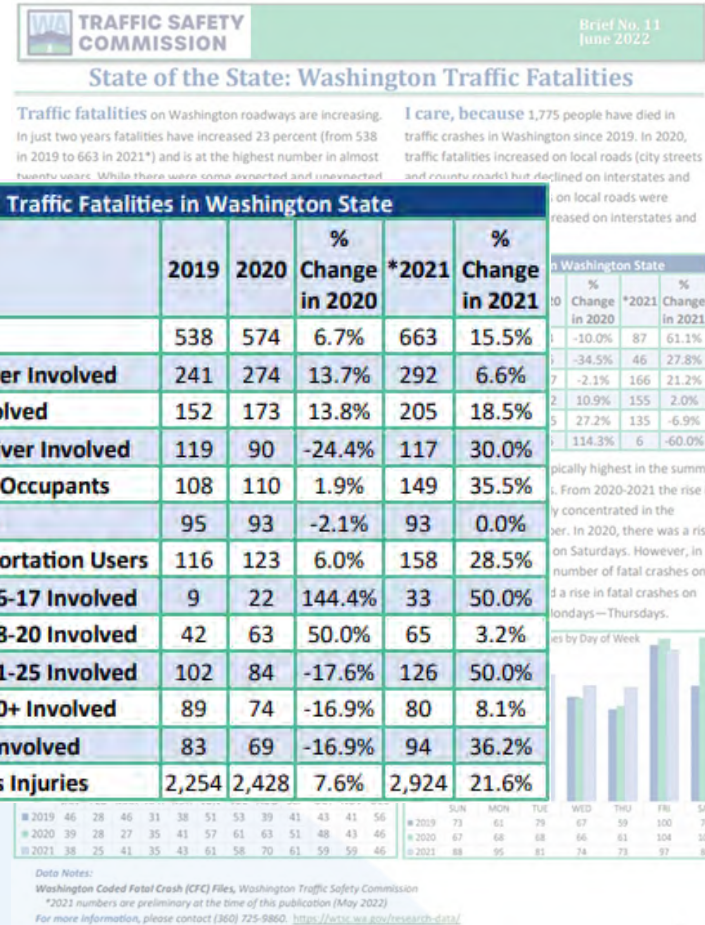


Day	2019	2020	2021
SUN	73	61	79
MON	61	79	67
TUE	67	59	100
WED	68	66	61
THU	66	61	104
FRI	74	97	88
SAT	74	105	88

Data Notes:
 Washington Coded Fatal Crash (CFC) Files, Washington Traffic Safety Commission
 *2021 numbers are preliminary at the time of this publication (May 2022)
 For more information, please contact (360) 725-9860. <https://wtsc.wa.gov/research-data/>

ROAD USERS AND HIGH-RISK BEHAVIORS

- **50% increases** in traffic fatalities involving both drivers ages 16-17 (+11) and drivers ages 21-25 (+42)
- **36% increase (+25)** in traffic fatalities involving heavy trucks
- **35% increase (+39)** in traffic fatalities involving unrestrained occupants
- **30% increase (+27)** in traffic fatalities involving a distracted driver
- **28% increase (+35)** in traffic fatalities involving active transportation users



Note: 2021 data remain preliminary until January 2023

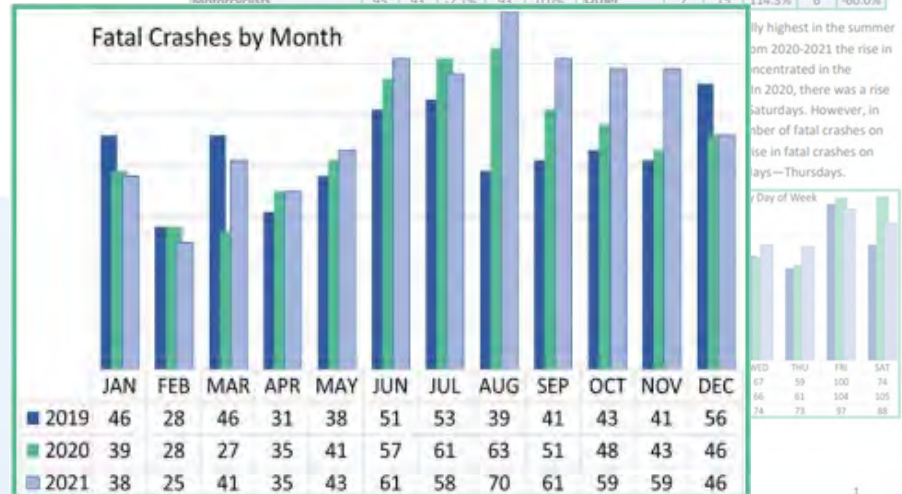
TRAFFIC FATALITIES BY MONTH

- In 2021, June (61), August (70), September (61), October (59), and November (59) had the most traffic fatalities
- 2021 (and 2020) bucks the ‘100 Deadliest Days of Summer’ as more traffic fatalities occurred in the Fall

Traffic fatalities on Washington roadways are increasing. In just two years fatalities have increased 23 percent (from 538 in 2019 to 663 in 2021*) and is at the highest number in almost twenty years. While there were some expected and unexpected impacts from COVID-19 on traffic fatalities in 2020, in 2021 all high-risk behaviors and factors contributing to fatal crashes have increased. Pedestrian fatalities are at historical highs.

I care, because 1,775 people have died in traffic crashes in Washington since 2019. In 2020, traffic fatalities increased on local roads (city streets and county roads) but declined on interstates and highways. Traffic fatalities on local roads were sustained in 2021, but increased on interstates and highways.

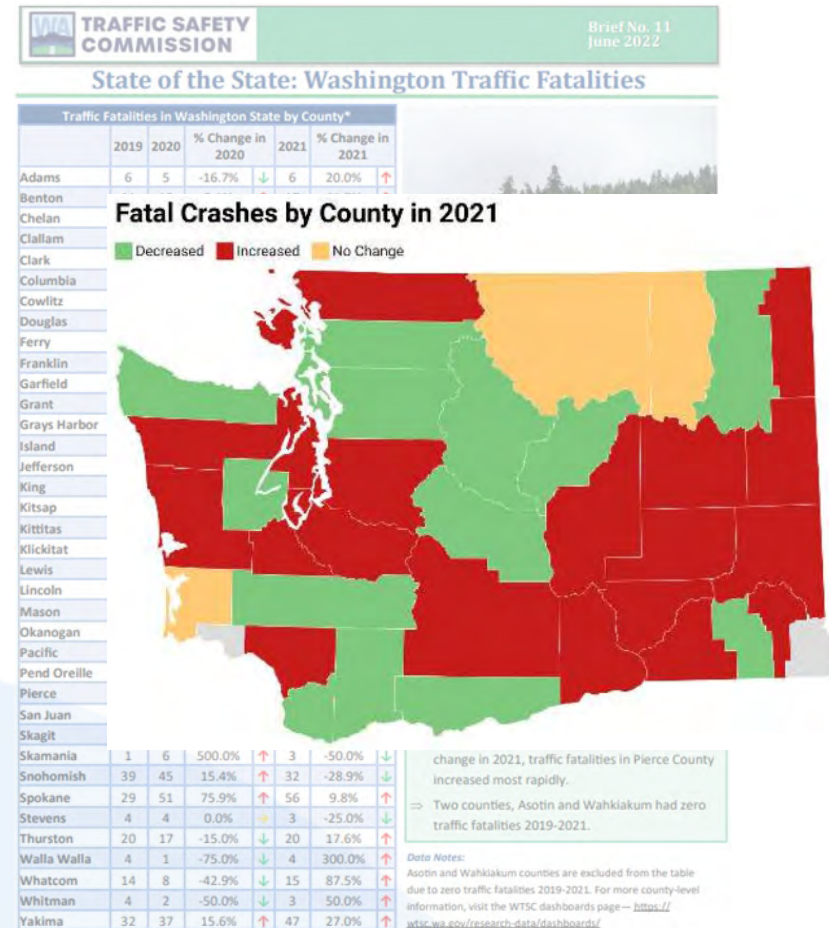
Traffic Fatalities in Washington State					Traffic Fatalities in Washington State						
	2019	2020	% Change in 2020	*2021	% Change in 2021		2019	2020	% Change	*2021	% Change in 2021
All Fatalities	538	574	6.7%	663	15.5%	Interstate	60	54	-10.0%	87	61.1%
Impaired Driver Involved	241	274	13.7%	292	6.6%	US highway	55	36	-34.5%	46	27.8%
Speeding Involved	152	173	13.8%	205	18.5%	State route	140	137	-2.1%	166	21.2%
Distracted Driver Involved	119	90	-24.4%	117	30.0%	County road	137	152	10.9%	155	2.0%
Unrestrained Occupants	108	110	1.9%	149	35.5%	City street	114	145	27.2%	135	-6.9%
Motorcyclists	95	93	-2.1%	93	0.0%	Other	7	15	114.3%	6	-60.0%



Note: 2021 data remain preliminary until January 2023

CHANGE IN TRAFFIC FATALITIES BY COUNTY

- Traffic fatalities did not increase across all counties in Washington
- **36% increase (+24)** in traffic fatalities in Pierce County
- **17% increase (+18)** in traffic fatalities in King County
- **29% decrease (-13)** in traffic fatalities in Snohomish County
- Ferry, Okanogan, and Pend Oreille Counties did not see any change in traffic fatalities



Note: 2021 data remain preliminary until January 2023

CHANGE IN WALKER/ROLLER FATALITIES BY COUNTY

- **16% increase (+7)** in walker/roller fatalities in King County
- **47% increase (+7)** in traffic fatalities in Pierce County
- **120% increase (+6)** in traffic fatalities in Yakima County
- **200% increase (+4)** in traffic fatalities in Kitsap County
- **22% decrease (-2)** in traffic fatalities in Clark County

WA TRAFFIC SAFETY Brief No. 11
June 2022

Walker/Roller Fatalities in Washington State by County



	2019	2020	% Change in 2020		2021	% Change in 2021	
King	40	44	10%	↑	51	16%	↑
Pierce	15	15	0%	→	22	47%	↑
Spokane	7	12	71%	↑	16	33%	↑
Snohomish	14	15	7%	↑	14	-7%	↓
Yakima	7	5	-29%	↓	11	120%	↑
Clark	8	9	13%	↑	7	-22%	↓
Thurston	3	4	33%	↑	6	50%	↑
Kitsap	1	2	100%	↑	6	200%	↑
Cowlitz	3	1	-67%	↓	5	400%	↑
Whatcom	3	4	33%	↑	5	25%	↑
Clallam	0	1	100%	↑	3	200%	↑
Okanogan	0	0	0%	↓	3	300%	↑
Grant	0	1	100%	↑	2	100%	↑
Jefferson	0	1	100%	↑	2	100%	↑
Benton	2	0	-100%	↓	1	100%	↑
Mason	2	1	-50%	↓	1	0%	→
Franklin	0	1	100%	↑	1	0%	→
Grays Harbor	0	2	200%	↑	1	-50%	↓
Pend Oreille	0	0	0%	↓	1	100%	↑
Skagit	8	3	-63%	↓	0	-100%	↓
Island	1	0	-100%	↓	0	0%	↓
Lewis	1	2	100%	↑	0	-100%	↓
Whitman	1	0	-100%	↓	0	0%	↓

Traffic Fatalities

you know?

More than half of walker/roller fatalities occur in just three counties; King, Pierce and Spokane. In the past three years, walker/roller fatalities in Spokane and Yakima counties have increased to double digit totals.

Seventeen counties have had zero walker/roller fatalities in the past three years. In 2021, twenty counties (out of 39) had zero walker/roller fatalities.

For more information, please contact (360) 725-9860. <https://wasc.wa.gov/research-data/>

Note: 2021 data remain preliminary until January 2023

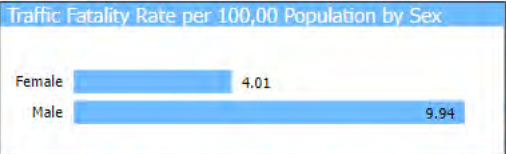
TRAFFIC FATALITY RATES DASHBOARD

- wtsc.wa.gov → Research & Data → Dashboards → General
- <https://wtsc.wa.gov/research-data/traffic-fatality-rates-dashboard/>



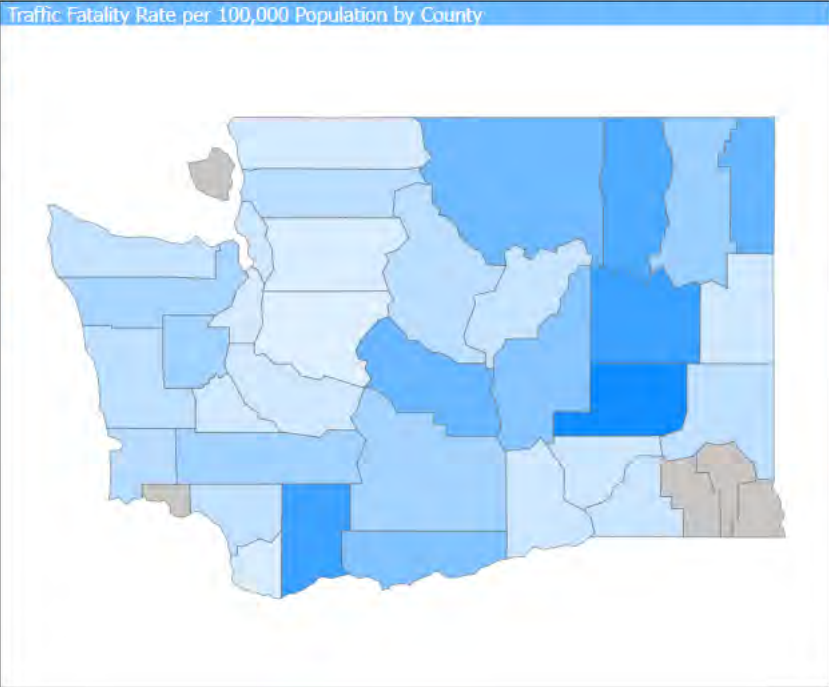
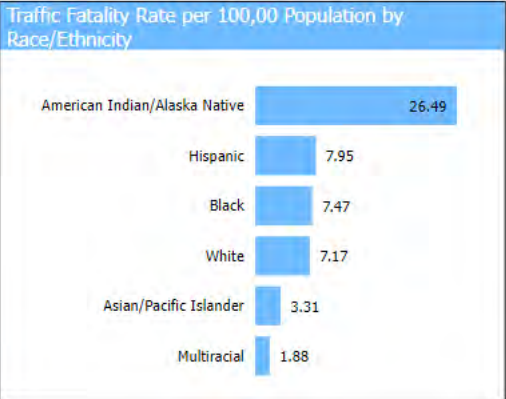
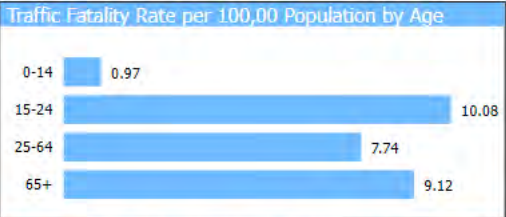
County-Level Traffic Fatality Rates in Washington, 2011-2020
(Per 100,000 Population) Last updated: Sept, 2022

- Year: All
- County: All
- Sex: All
- Age: All
- Race/Ethnicity: All



4,992
Total Traffic Fatalities

6.97
Traffic Fatality Rate per 100,000 Population



Page 2 of 2 →



Note: 2021 data remain preliminary until January 2023

Thank You

Max Roberts, PhD

Research Associate, Washington Traffic Safety Commission

mroberts@wtsc.wa.gov

