



Quinault Indian Nation

SR 109 THREATS AND CONCERNS

JULIE BURNETT, COMMUNITY SERVICES DIRECTOR

SR 109 begins outside the City of Hoquiam, and continues up the coast, past Ocean Shores, Copalis Beach, Pacific Beach, and Moclips. It is the main access to the Quinault Indian Reservation. It also serves as the major Tsunami Emergency Evacuation Route.

SR 109 is the only road in and out of Taholah, the government seat where hundreds of people live and work for the Quinault Indian Nation.

This highway is seriously threatened by landslides and erosion issues.



Climate Change and Geological activity has impacted SR 109.

Mud Slides

- ▶ The Quinault Indian Nation experienced two recent major mudslides on SR 109.
- ▶ December 18, 2018 at MP 33.5 a huge mudslide occurred. This resulted in a road closure. WSDOT responded with a clean up, but another slide occurred at the same spot within a week. The road was reduced to one lane, with a traffic light installed for several months.

2018 Mudslide



SR 109 January 2020 Mudslide

- ▶ January 6, 2020: Both lanes of SR 109 were blocked with debris, including a tree at MP 34. This slide was 25-50 feet north of the 2018 slide.



88 Corner

- ▶ In January 2021, the QIN declared an Emergency, and identified a temporary by-pass logging road that could serve as a temporary road.
- ▶ March 2021: QIN hired a geology team to review the “88 corner” slide.
- ▶ The “88 corner” area has changed noticeably in the past 3 years, with trees shifting, and other movement occurring.

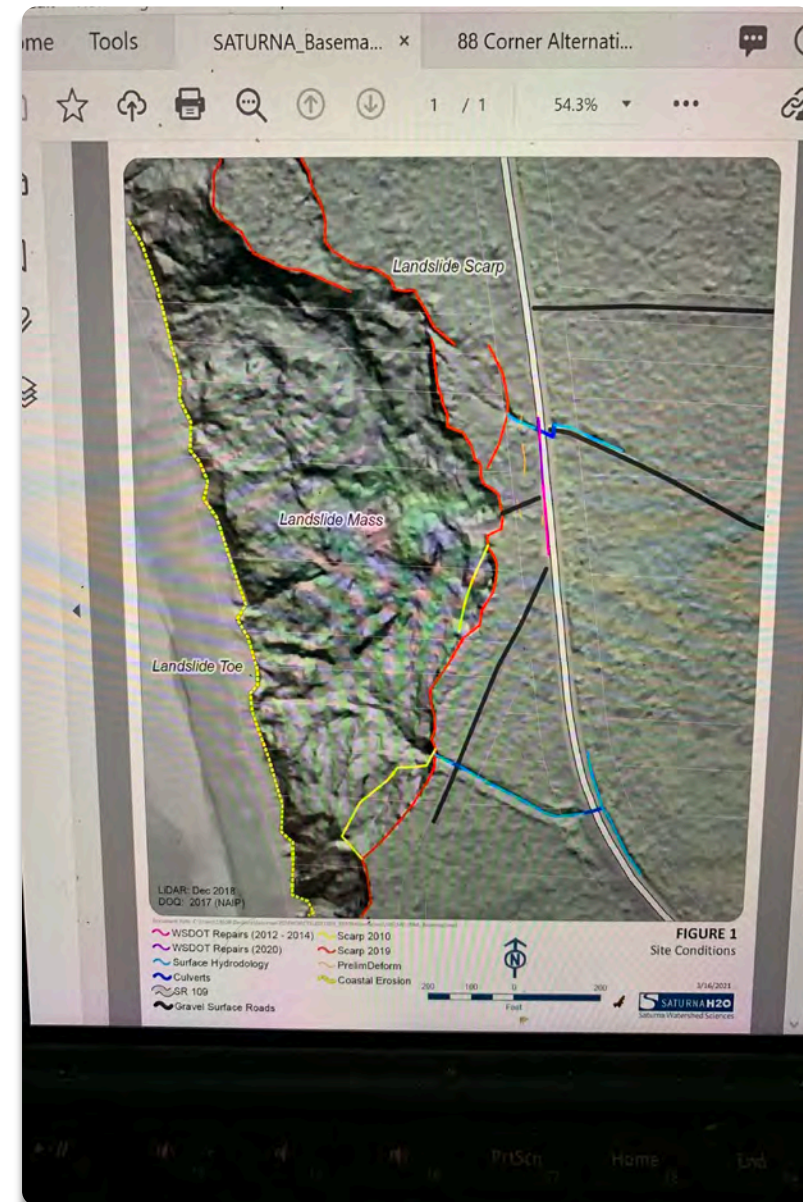


88 corner slide images



88 corner landslide mass

The QIN staff and hired consultants met with WSDOT on May 27, 2021 for a Government-to-Government discussion about this critical issue. The image to the right highlights how large the landslide mass is in relation to the highway.



WSDOT Response to QIN 88 corner

- ▶ WSDOT response: They have noted that there have been significant changes to the road since 2020. Changes included: tension cracks, and deformation occurring within WSDOT's ROW.
- ▶ They have committed to providing a region survey crew to survey the roadway and add markers on certain trees to watch for movement. Once a baseline is established, the crew will survey monthly to monitor movement.
- ▶ Short term strategies:
 - ▶ Re-routing surface water from the area
 - ▶ Periodic monitoring of the failure
 - ▶ Beginning preliminary review and analysis for a potential realignment of SR 109.