



Washington State Transportation Commission

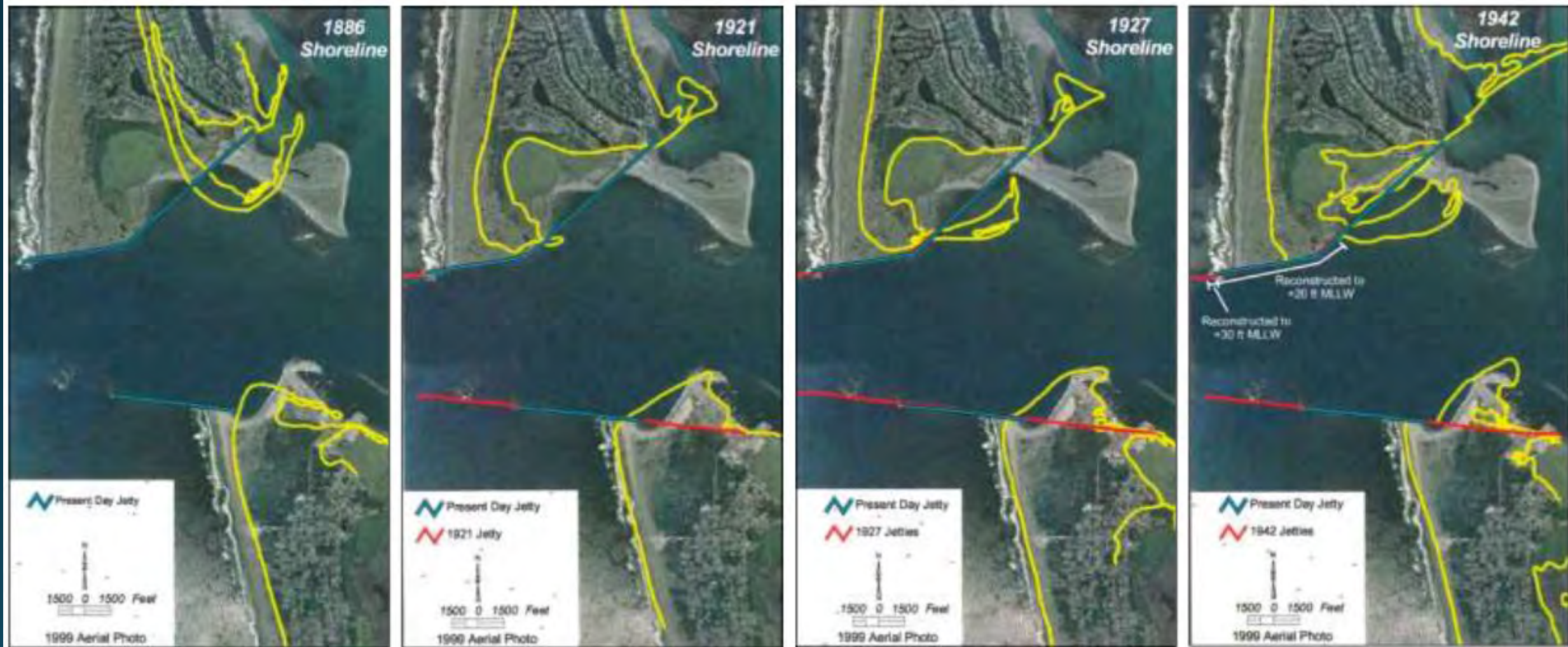
City of Ocean Shores
Public Works Department
November 16, 2021

Agenda

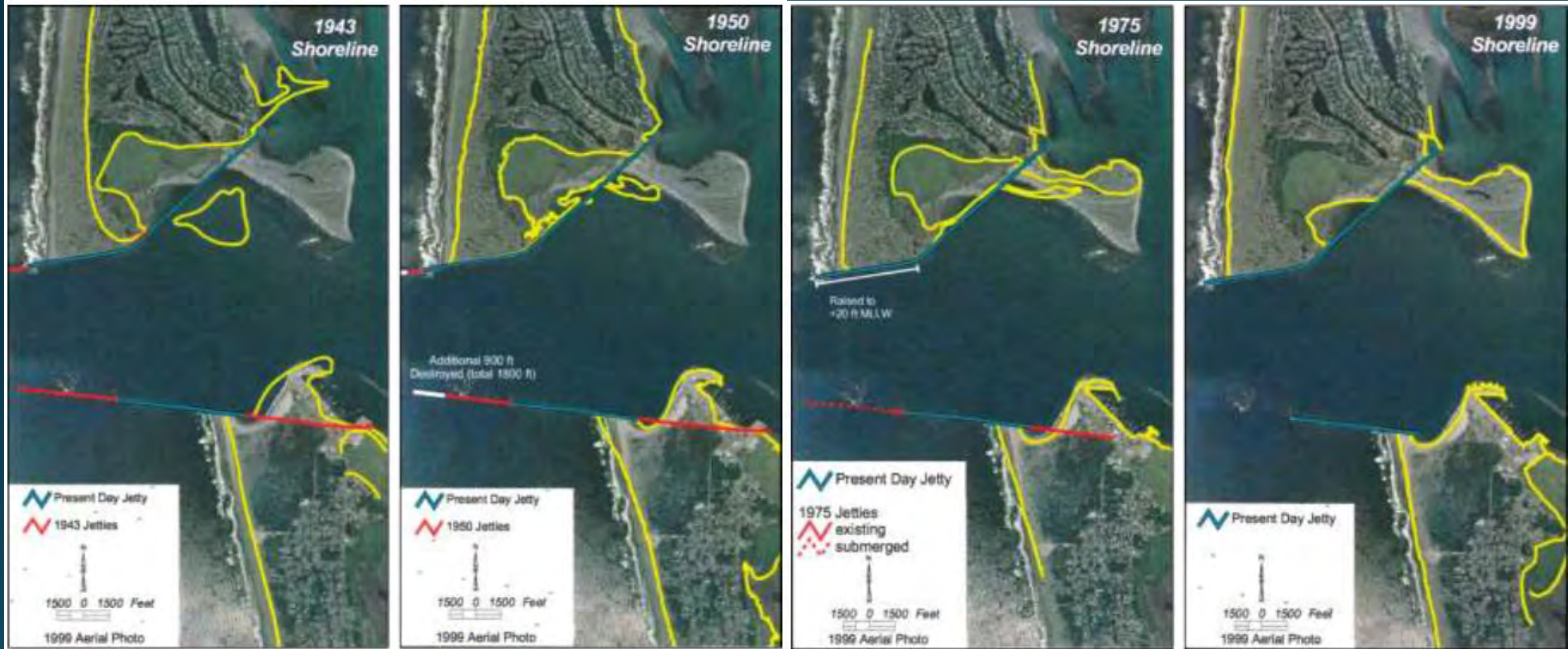
- Brief History of OS
- Maintenance Needs and Funding
- Urban vs Rural



Brief History of Ocean Shores



Brief History of Ocean Shores



Brief History of Ocean Shores

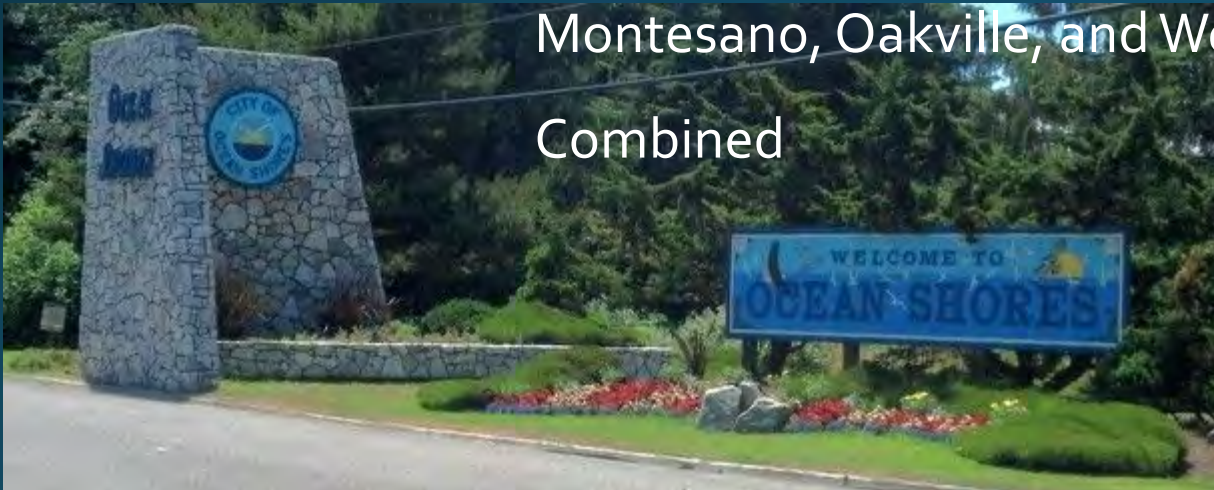
- 1960 – Ocean Shores Development Corporation
 - Majority of transportation system constructed by developer
- 1970 – City of Ocean Shores incorporated



Ocean Shores Network

- 224 Lane Miles in Ocean Shores
 - Single lane to Federal Way and Back from Gates, or
 - Entire roadway from Gates to Mud Bay Exit
 - More than Cosmopolis, Elma, McCleary, Montesano, Oakville, and Westport...

Combined



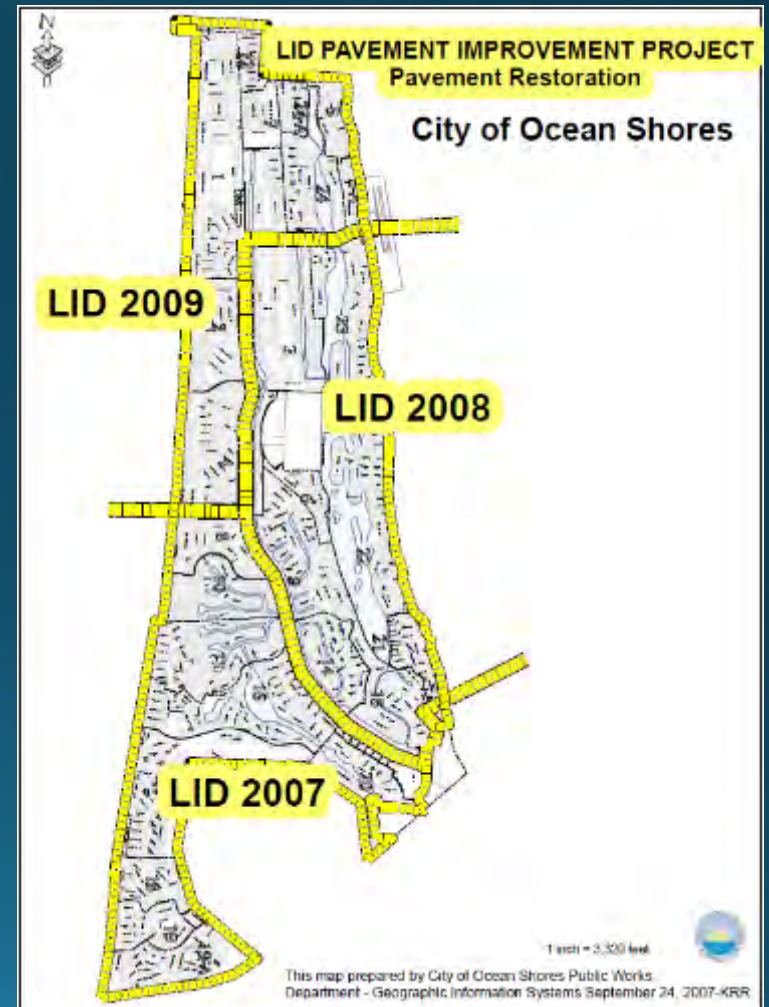
Maintenance Efforts & Funding

- 80s, 90s, & 00s – a couple arterials reconstructed and lots of dig outs (failing subgrade)
- Pre 2007 – heavy investment in cold mix



Maintenance Efforts & Funding

- 2007-2009 – LID overlay entire transportation network (\$40M in construction / \$45M LID)



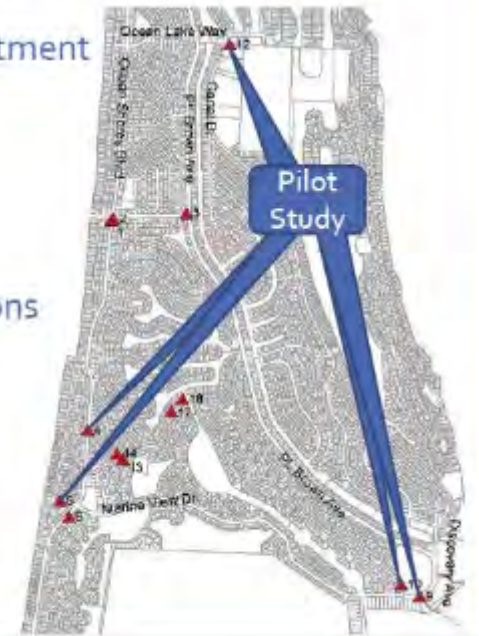
Maintenance Efforts & Funding

- 2017 – System wide assessment
- 2017 – Polymer Injection Pilot
- 2017 – Formed Transportation Benefit District



Polymer Injection Pilot Study

- Proven useful for concrete, jury out on asphalt
- May be very useful with our recent investment
- Have not observed
- Pilot 5 Areas for \$15,000
- If successful, addresses 42% of depressions



Maintenance Efforts & Funding

- 2018 – Voter approved Sales Tax to fund TBD for maintenance only
- 2018 & 19 – More dig outs!
- 2020 – Crack Sealing (Covid-19)
- 2021 – Various full depth / partial depth repairs and intersection repairs



Urban vs Rural



Urban vs Rural

- Substitute House Bill 2707 – Effective 6/9/94

4 NEW SECTION. **Sec. 9.** A new section is added to chapter 47.26 RCW
5 to read as follows:

6 The intent of the small city account program is to preserve and
7 improve the roadway system consistent with local needs of incorporated
8 cities and towns with a population of less than five thousand. The
9 board shall adopt rules and procedures to govern the allocation of
10 funds distributed to the small city account. All moneys deposited in
11 the motor vehicle fund to be credited to the small city account must be
12 expended for roadway projects, for expenses of the board, or for the
13 payment of principal or interest on bonds issued for the purpose of

Urban vs Rural

RCW 47.26.115

Small city program.

The intent of the small city program is to preserve and improve the roadway system consistent with local needs of incorporated cities and towns with a population of less than five thousand. The board shall adopt rules and procedures to govern the allocation of funds distributed to the small city program.

[1999 c 94 § 18; 1994 c 179 § 9.]

Urban vs Rural

Overview of TIB Grant Programs

The Legislature created the Transportation Improvement Board to foster state investment in quality local transportation projects. The TIB distributes grant funding, which comes from the revenue generated by three cents of the statewide gas tax, to cities and counties for funding transportation projects. TIB's grant programs are categorized by the type of customer agency each program is intended to serve.

Urban Programs

Urban programs serve cities with a population of 5,000 or more and counties with urban unincorporated areas.

Small City Programs

Small city programs are designed to serve cities and towns with a population of less than 5,000.

Other Opportunities

Other TIB funding opportunities that may have specialized eligibility requirements.

Urban vs Rural

- Washington State Population:

- 1994 – 5,291,557
- 2021 – 7,766,925
- 46.8% increase

- Grays Harbor Population:

- 1994 – 65,441
- 2021 – 75,450
- 15.3% increase



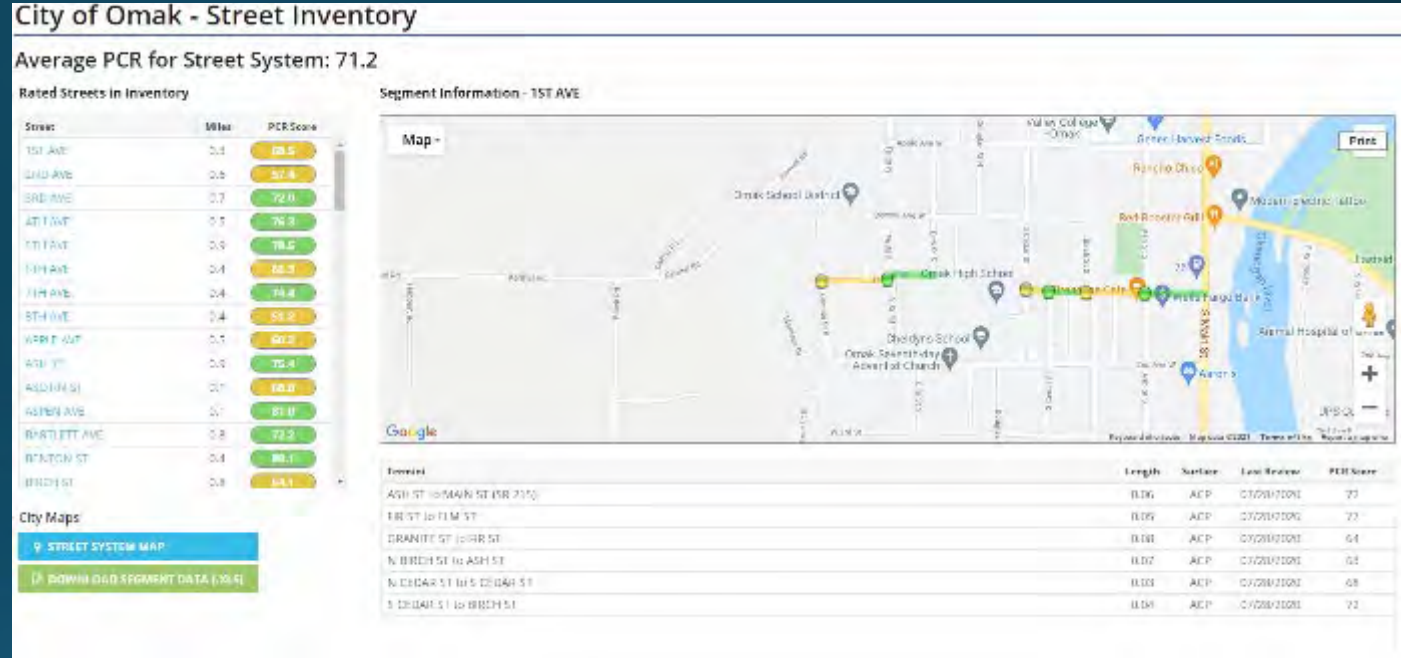
Source:

Data from OFM April 1
Population Estimates for
year shown.

Urban vs Rural

Population Change and Rank for Cities and Towns, April 1, 2010 to April 1, 2021								
Office of Financial Management, Forecasting and Research Division								
City	County	2010 Population Census	2021 Population Estimate	2010-2021 Numeric Change in Population	2010-2021 Percentage Change in Population	2010 Rank by Population Size	2021 Rank by Population Size	Rank by 2010-2021 Growth Rate
Deer Park	Spokane	3,652	4,645	993	27.19	129	127	41
Nooksack	Whatcom	1,338	1,700	362	27.06	185	176	42
Royal City	Grant	2,140	2,715	575	26.87	157	151	43
Poulsbo	Kitsap	9,200	11,660	2,460	26.74	82	80	44
Lynden	Whatcom	11,951	15,110	3,159	26.43	67	68	45
Seattle	King	608,660	769,500	160,840	26.43	1	1	46
Lake Stevens	Snohomish	28,069	35,460	7,391	26.33	39	35	47
Waverly	Spokane	107	135	28	26.17	278	276	48
Ocean Shores	Grays Harbor	5,569	6,995	1,426	25.61	114	108	49
Connell	Franklin	4,209	5,275	1,066	25.33	125	121	50
Moses Lake	Grant	20,366	25,330	4,964	24.37	46	45	51
Elmer City	Okanogan	238	295	57	23.95	260	255	52
Richland	Benton	48,058	59,570	11,512	23.95	21	21	53
Sultan	Snohomish	4,651	5,715	1,064	22.88	122	118	54
Bellevue	King	122,363	149,900	27,537	22.50	5	5	55
Uniontown	Whitman	294	360	66	22.45	254	248	56
White Salmon	Klickitat	2,224	2,720	496	22.30	155	150	57
Enumclaw	King/Pierce	10,669	13,030	2,361	22.13	75	73	58
Buckley	Pierce	4,354	5,300	946	21.73	124	120	59
Blaine	Whatcom	4,684	5,700	1,016	21.69	120	119	60

Urban vs Rural



City of Omak – Okanogan County
2021 Population Estimate 4,975

Urban vs Rural

- Small City Program, as defined by the RCW, needs to change.
- What is most appropriate?
 - A new static number? Population continues to increase...
 - Lane Miles? Not all jurisdictions are equal...
 - Density? IE Population / Land Area (sq. miles)
- What does urban mean to you?



Thoughts, Questions, Concerns,
Comments?

Discussion opportunity!

