

Spokane Regional Transportation Council

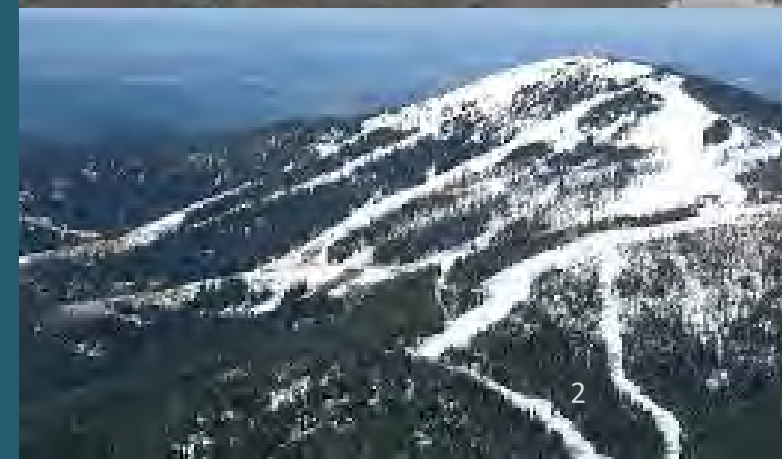
Washington State Transportation Commission Meeting

September 21, 2021



The Spokane Area

With a beautiful landscape, thriving businesses and a strong sense of community, we are fortunate to call Spokane our home.



A Changing Region

Spokane County, Washington

Population Density (2020): 305.7 people per square mile

Population Data

Total population (2020): 539,339

Total population (2010): 471,221

Numeric change (2010–2020): 68,118

Percent change (2010–2020): 14.5

Note: Population density expressed as average number of people per square mile of land area.



**Introduction by SRTC Board Chair
Mayor Ben Wick, Spokane Valley**

Community Challenges

1) Growth & Development

- Increasing property costs are putting pressure on household budgets
- Traffic patterns are shifting & congestion is growing

2) Equity

- Ensuring all voices are heard & needs are met

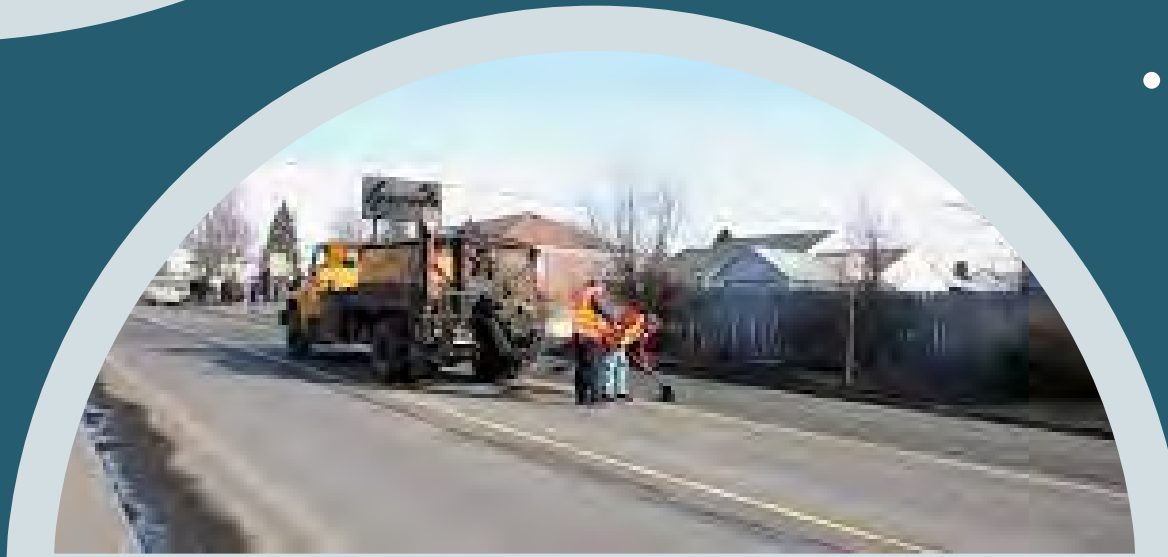


Community Challenges



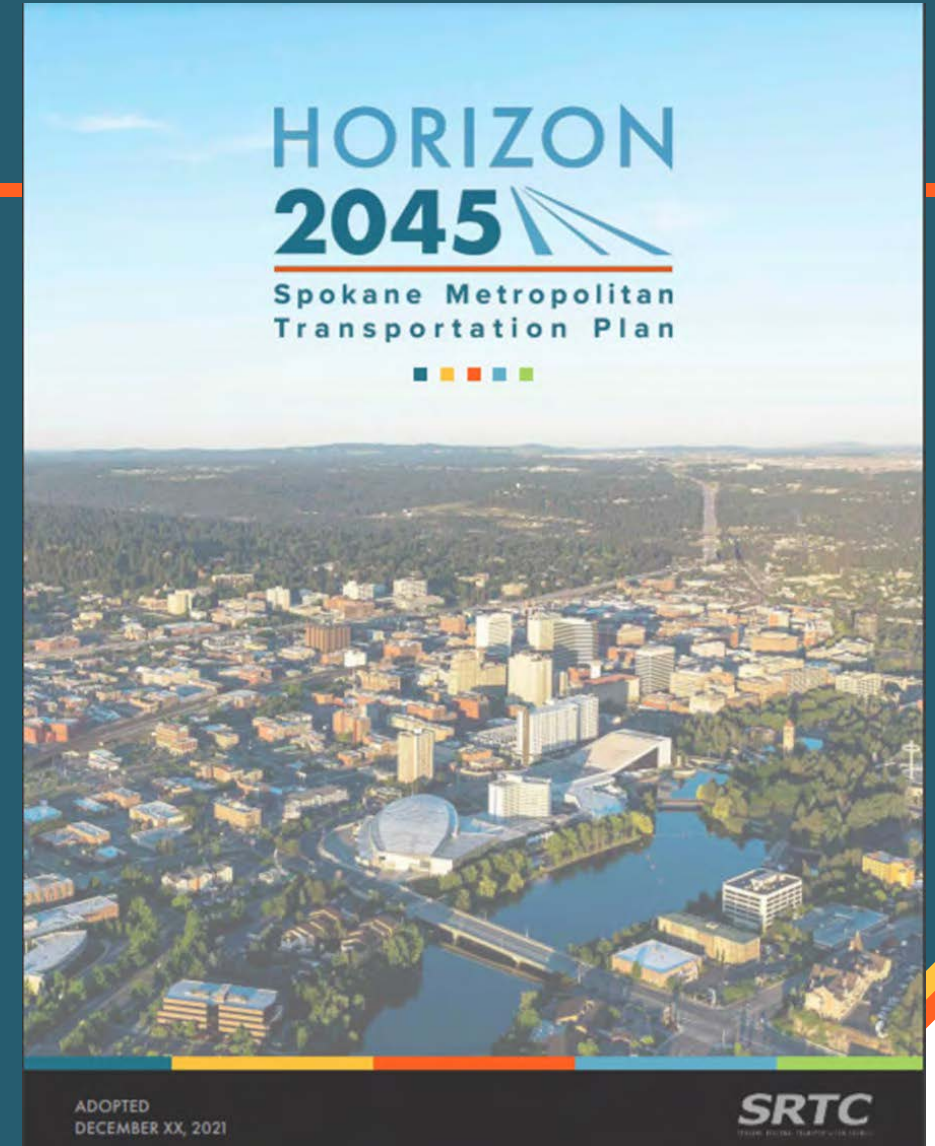
3) Funding Constraints

- Construction costs of new projects are increasing faster than supporting revenue
- Expansion of electric vehicles & increased fuel efficiency
- Preservation and maintenance of the existing system is underfunded



SRTC Planning Activities

- US 195/I-90 Area Study
- Division Connects
- Project Prioritization & Funding Strategies
- Demographic Research & Public Engagement
- Strengthening Community Partnerships
- Data collection



SRTC Project Advancement

- Electrification Grant
- North Spokane Corridor
- Bigelow Gulch Corridor
- Bridging the Valley
(Barker Road & Pines Road)
- Millwood Trail
- Bike-Ped Counters & Blue
Tooth Readers





Looking Forward

- Develop Funding Strategies
- Data Collection & Management
- Leverage Partnerships
- Leverage Technology
- Identify & Advance Needed Projects
- Pursue a Balanced & Equitable Approach



Thank you!

Lois Bollenback, Executive Director
Spokane Regional Transportation Council
lbollenback@srtc.org | 509.343.6370

