

Washington State Transportation Commission

Lakewood, WA

April 20th, 2021



***System expansion in
South Sound***

Largest rail expansion in the USA

Serving a region of over 3.8 million

Link Light Rail

- 116-mile regional system with 50 stations.
- Connecting Bellevue, Redmond, Kirkland, Issaquah, Tacoma, Everett, Ballard and West Seattle.

Tacoma Link extensions to Hilltop and TCC

- 12 new stations.

Sounder commuter rail

- 91 miles of commuter rail.
- Expansion of service, 40% capacity increase.
- Parking and access improvements.
- Platform extensions.

Bus

- Bus Rapid Transit serving 12 cities.
- Bus-on-Shoulder opportunities.



Pierce County



- A** Hilltop Tacoma Link (2022)
- B** Tacoma Link Extension – (2039)
St Joseph to Tacoma Community College
- C** Tacoma Dome Link Extension – (2030)
Federal Way to Tacoma
- D** Sounder Extension to DuPont and Tillicum (2036)
- E** Sounder capital improvements (2024-2036)
- F** Puyallup and Sumner parking and access (2022-2023)
- G** Pacific Ave bus speed and reliability improvements

Realigning expansion plans



Financial changes

Current 25-year capital program runs 2016-2041

- **Lower Revenue:** Lower sales, motor vehicle excise, and rental car taxes due to recession.
- **Higher Costs:** Construction costs remain at record levels due to continued growth in property values and hot construction market.

Realignment tools available to Sound Transit

- **Cutting costs** through reduced project scope, suspending or canceling projects, etc.
- **Raising new revenues** through issuing higher debt or seeking additional state or federal funding.
- **Delaying or phasing projects** to spread costs over time and keep total agency debt within current legal limits.

Next steps

Anticipated realignment work through July

Ongoing public engagement

March	Additional scenarios Initial report on independent cost review
April	Discuss affordability gap update
May	Discuss Board priorities
June	Develop realignment plan(s)
July	Potential action to adopt realignment plan(s)

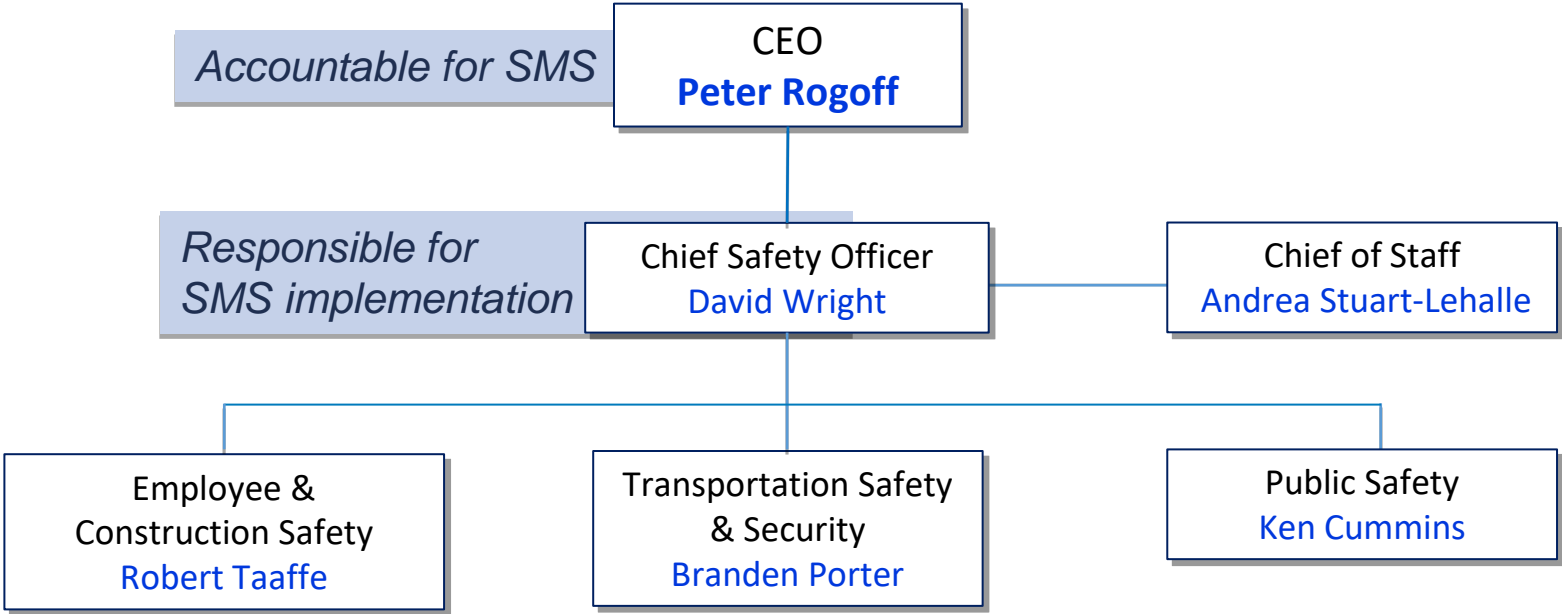
***Point Defiance Bypass
Resumption of Passenger
Service Update***

Why we are here

- *Update on broader Safety function*
- *Update on PDB Resumption of Passenger Service*



Safety Department Structure & Divisions

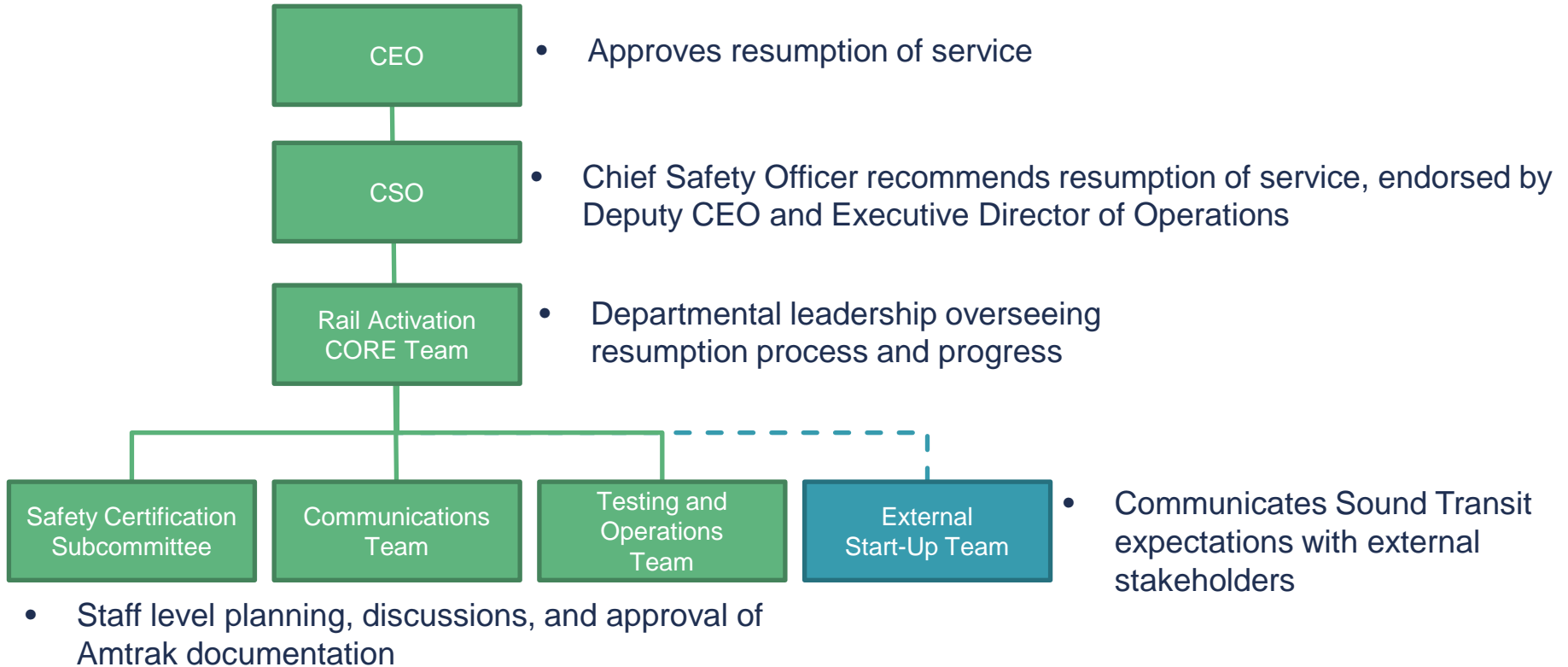


Priorities before resuming service

Sound Transit is owner the host railroad

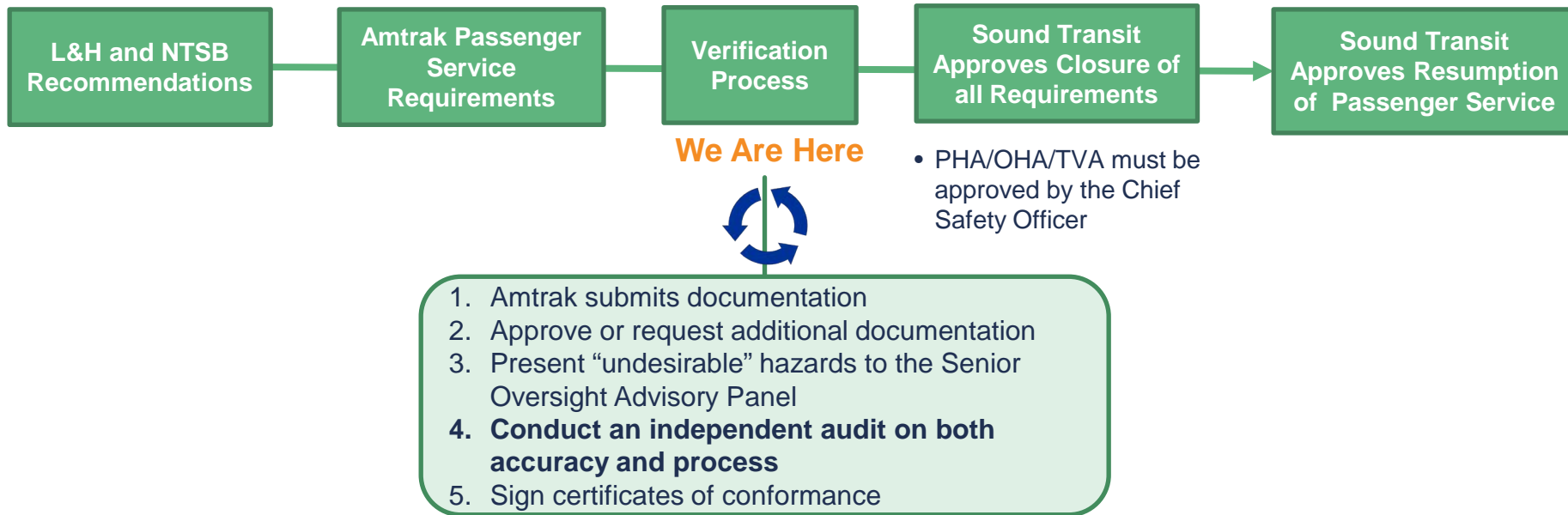
- Safety, not schedule, will continue to drive progress
- Implementation of recommendations identified within the NTSB and L&H reports
- Ensure compliance from Amtrak and WSDOT of all applicable requirements prior to the resumption of service

Rail Activation Process



Safety Certification Process Overview

Safety drives review and approval of documentation and resumption of service

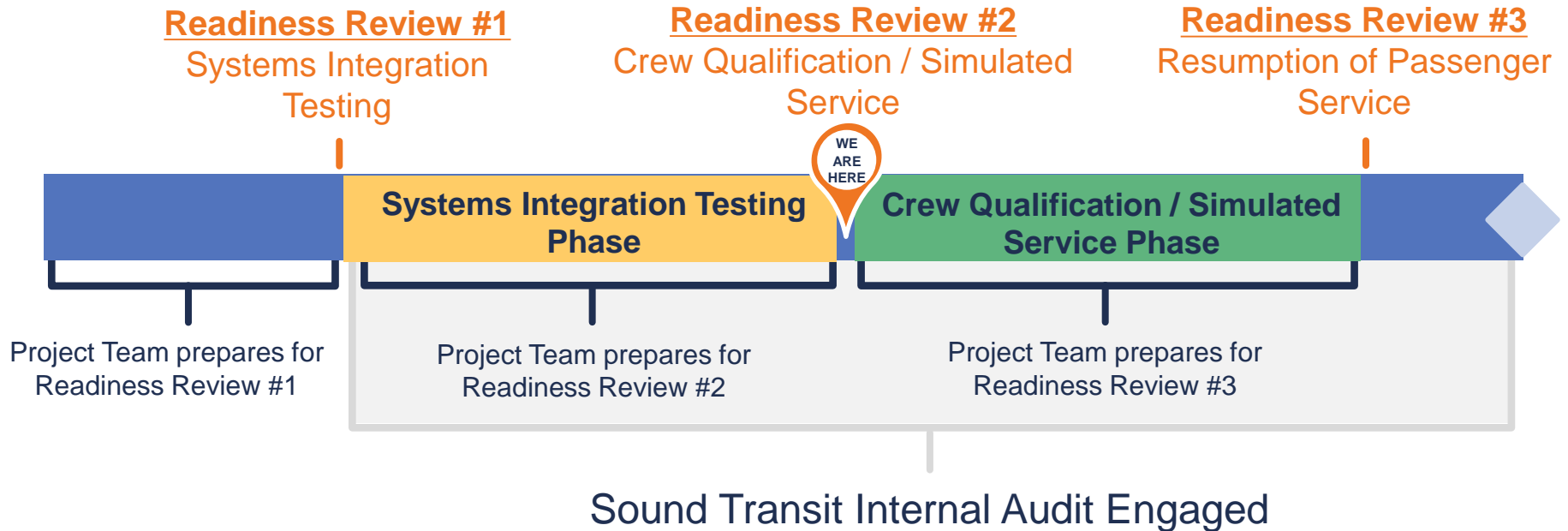


Additional safety measures

- *Positive train control (PTC)*
- *PTC cut-out protocol*
- *Step down speed*
- *Additional signage*
- *Crew focus zone*
- *Training enhancements*
- *Emergency responder training*

Project Timeline

Overview



Future Key Activities

- *Readiness Review #2: Crew Qualification / Simulated Service Phase*
- *Emergency Responder Training*
- *Ongoing outreach with elected officials and community stakeholders*

At this time, no date has been identified for the resumption of Amtrak passenger service.

Thank you.



 [soundtransit.org](https://www.soundtransit.org)

