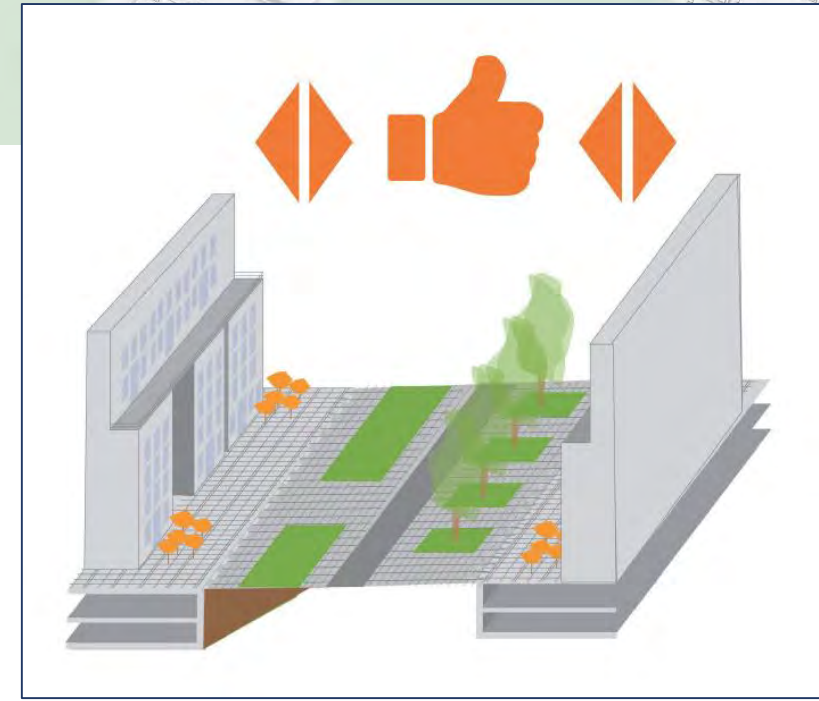


Bellevue Segment

Development Vision

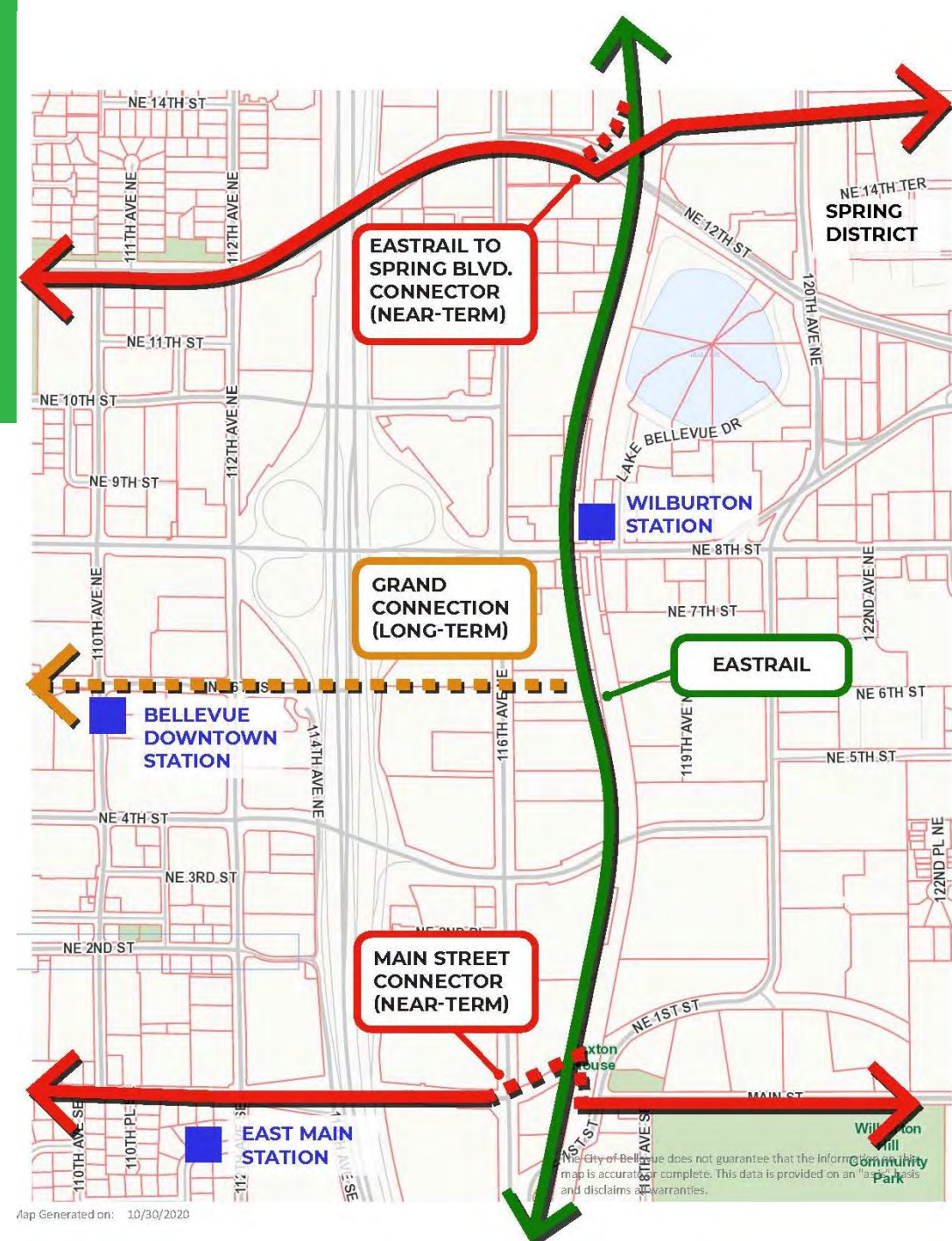
- Wilburton redevelopment area—new vision and code framework
- Eastrail runs through the center of Wilburton
- Joint city-county initiative will develop a framework for relationship between trail corridor and development.



Bellevue Segment

Connections to Urban Centers

- City is lead for developing key connections from Eastrail to Downtown, BelRed/Spring District
- Links north-south Eastrail to east-west city ped/bike facilities
- Slopes and grades at Spring Blvd and at Main Street make these connections costly to develop.



Bellevue Segment

Unfunded Gaps

- Central Wilburton — \$2.5 million needed
(north end of Trestle to south end NE 8th Street bridge)
- I-90 Steel Bridge — \$10 million needed
Links the north and south segments of the Eastrail corridor, connects Eastrail to communities to the south and to the broader region

Overall target: Create continuous corridor by 2023/2024.



Bellevue Segment

Central Wilburton Gap

- Unfunded
- \$2.5 million needed
- Interim gravel trail + crossing at SE 1st Street
- Extends from SE 5th Street to NE 6th Street (north end of Trestle to south end NE 8th Street bridge)



Photo: John Tiscornia

Bellevue Segment

I-90 Steel Bridge Gap



- Unfunded
- \$10 million needed
- Links the north and south segments of the Eastrail corridor
- Connects Bellevue to Renton and the broader region.

