

REDMOND CENTRAL CONNECTOR

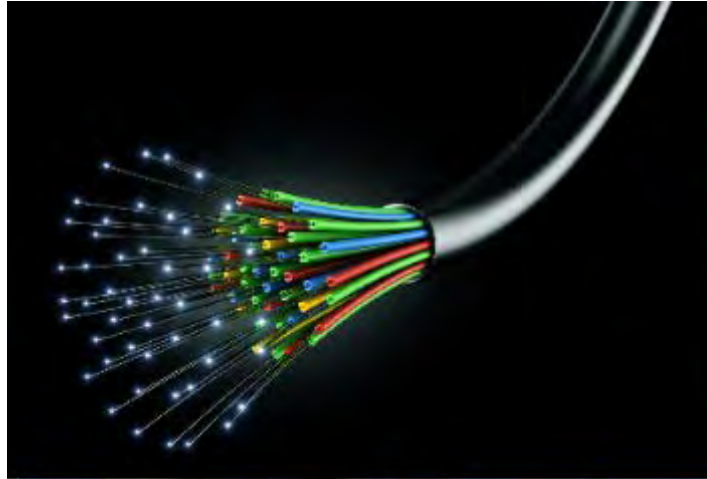
More than a trail



CRITICAL INFRASTRUCTURE



- **The Eastrail is a place for Trail, Transit & Utilities**
- Redmond's Goals
 - Create a Trail and Linear Park
 - Integrate Art & Gathering Spaces
 - Enhance Economic Vitality
 - Integrate Utilities
 - Transit Integration



RECONNECT DOWNTOWN

Public Space, Pedestrian Connections and Streets



- Street Connectivity
- Sound Transit Light Rail & Trail Integration
- Pedestrian connections to Downtown Park
- Streetscape Improvements



GATHERING SPACE



- Benches & Landings to Gather
- Designed to host Cultural and Art Festivals
- Room for Social Distancing

148th Ave NE Multi-Modal Transportation Improvements



- Improvements:
 - Part of Regional Trail Network
 - Construct a Bicycle & Pedestrian Path connecting 148th Ave NE across SR 520
 - 520 Trail Connects Eastrail, RCC, and Sammamish River Trail
 - Provide Additional Through Lane
- Benefits
 - Bicycle & Pedestrian Safety
 - Congestion Relief

