

# Northwest Region

## **Overview of success and challenges**

Mike Cotten, P.E., DBIA, Regional Administrator  
Washington State Transportation Commission meeting  
November 17, 2020

# Agenda

- Region overview
- Recent eastside work
- Priorities:
  - Fish passage
  - State of good repair



# Region overview

Region population: 3,264,592

State population: 7,073,146



# Unique assets



I-90 floating bridges



SR 99 Tunnel



I-5 Convention Center



SR 520 floating bridge

## Bridges in NWR

- 1,270
- 35% of WSDOT inventory

## Tunnels

- 25
- 20,000 light fixtures

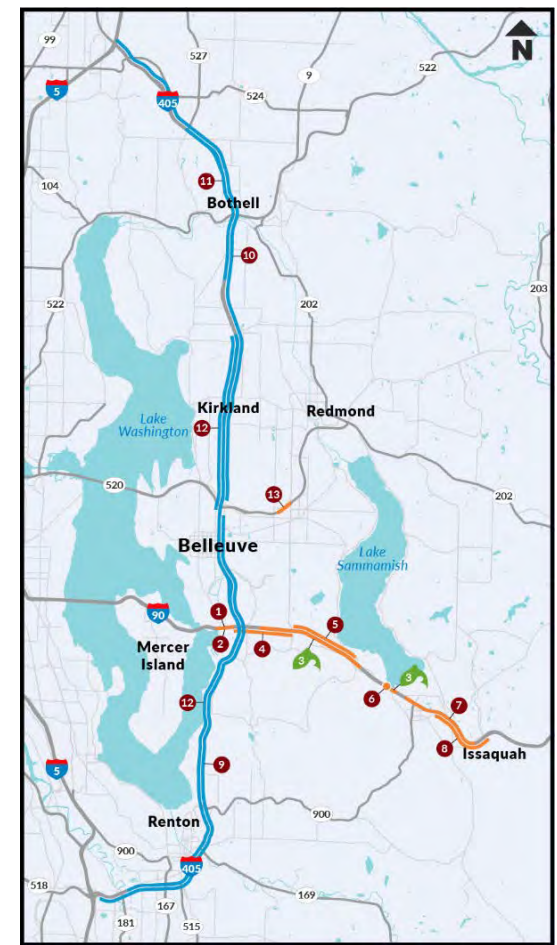


I-90 Mount Baker

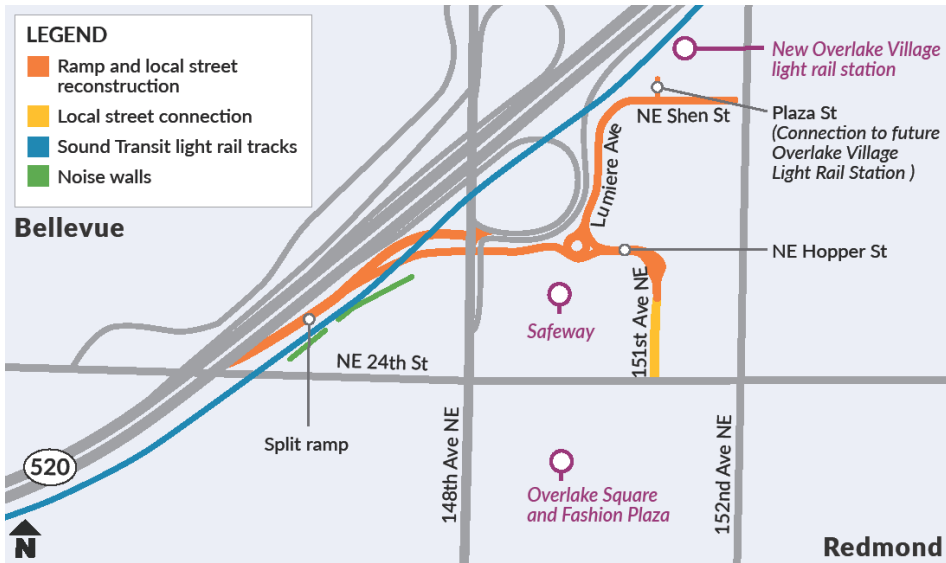


# Upcoming Bellevue area projects

1. I-90/WB Mercer Slough Bridge - Special Bridge Repair (2023)
2. I-90/WB Mercer Slough Bridge - Bridge Scour (2023)
3. I-90/Lewis, Sunset, Schneider, & West Village Park Creeks - Fish Passage (2022)
4. I-90/Eastbound Mercer Slough to 150th Ave SE - Paving & Bridge Deck Rehab (2025)
5. I-90/Eastgate to SR 900 - Corridor Improvements (2019)
6. I-90/Eastbound 194th Ave SE Vicinity - Variable Message Sign Replacement (2023)
7. I-90/Westbound SR 900 Vicinity to E Sunset Way – Paving (2024)
8. I-90/Front Street Interchange Justification (complete)
9. I-405/Renton to Bellevue - Corridor Widening & ETL/Stage 2 (2019-2024)
10. I-405/SR 520 ramps and SR 527 to I-5 – Paving (2022)
11. I-405/SR 522 Vicinity to SR 527 Express Toll Lanes – Improvement Project (2022)
12. I-405/BN RR Br to Ped Trail Br & I-90/E Fork Issaquah Creek – Seismic (June 2021)
13. SR 520/148th Ave NE Interchange – Overlake Access Ramp (April 2021)

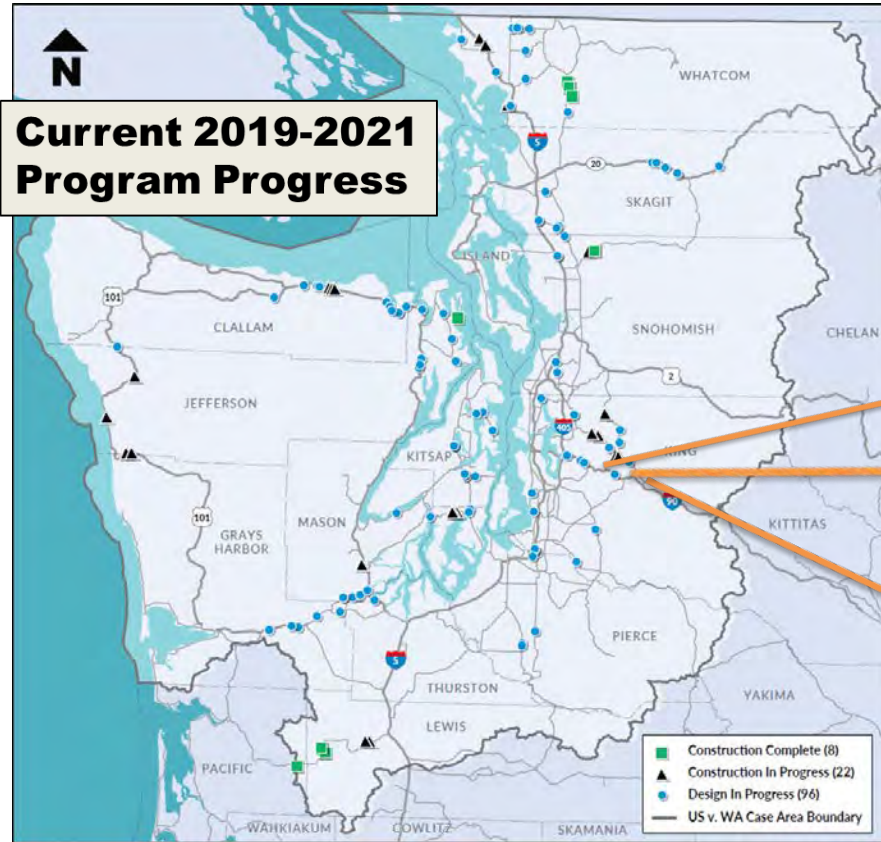


# Connecting Washington



# Priorities: Fish passage

Issaquah  
Creek  
tributary

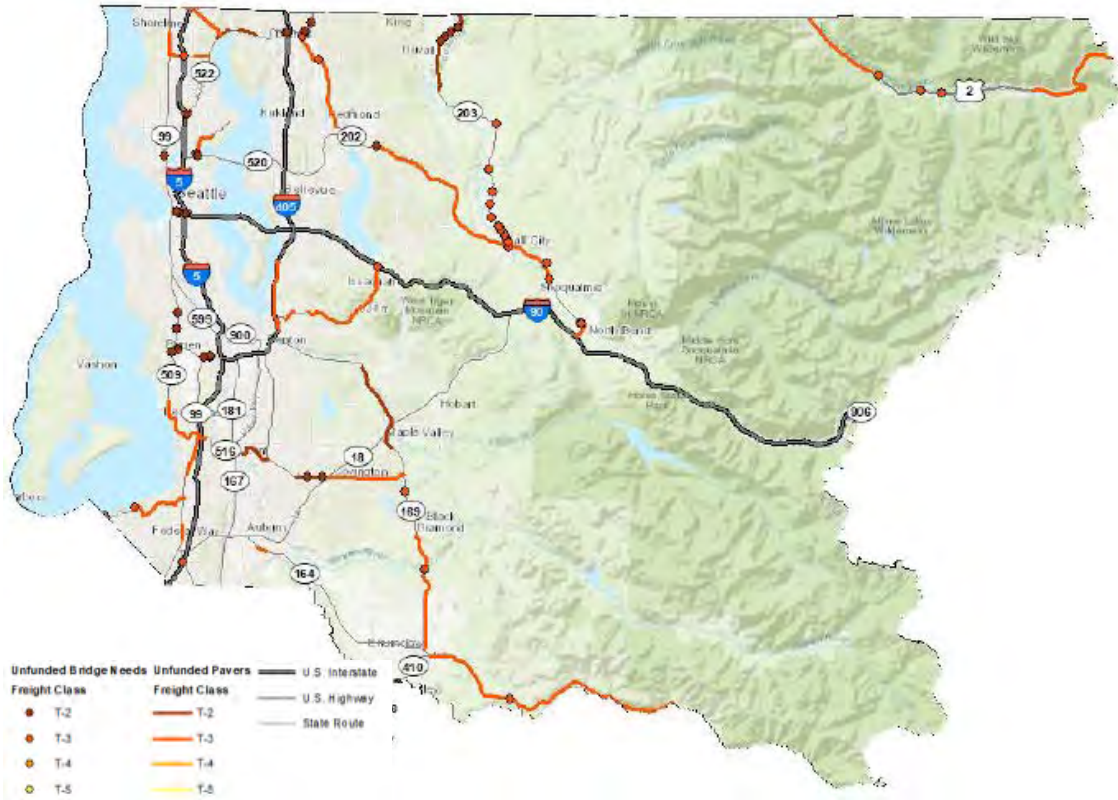


Soderman  
Creek

Lewis  
Creek



# Priorities: State of Good Repair



Westbound I-90  
Expansion Joint  
replacement





# Beyond the bridge

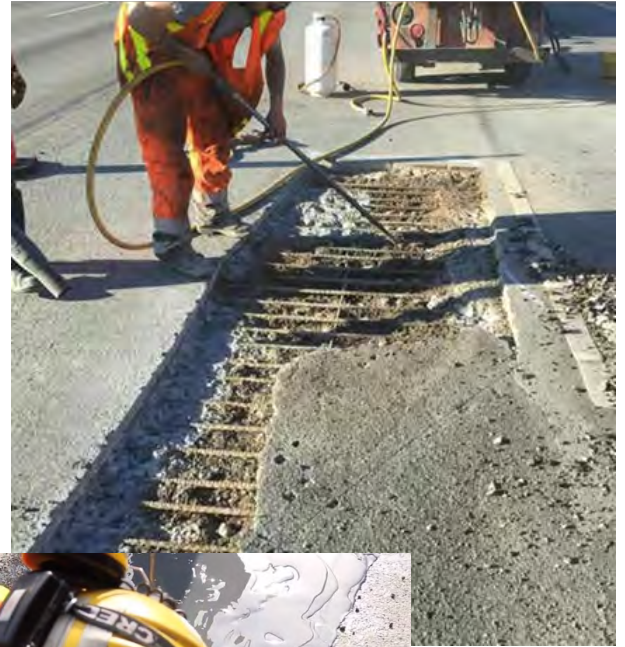


I-90 floating bridge



I-5 near Northgate

# Moving forward



# Questions?

For additional information, please contact:

Mike Cotten, Region Administrator  
(206) 440-4693 or [CotteMi@wsdot.wa.gov](mailto:CotteMi@wsdot.wa.gov)