

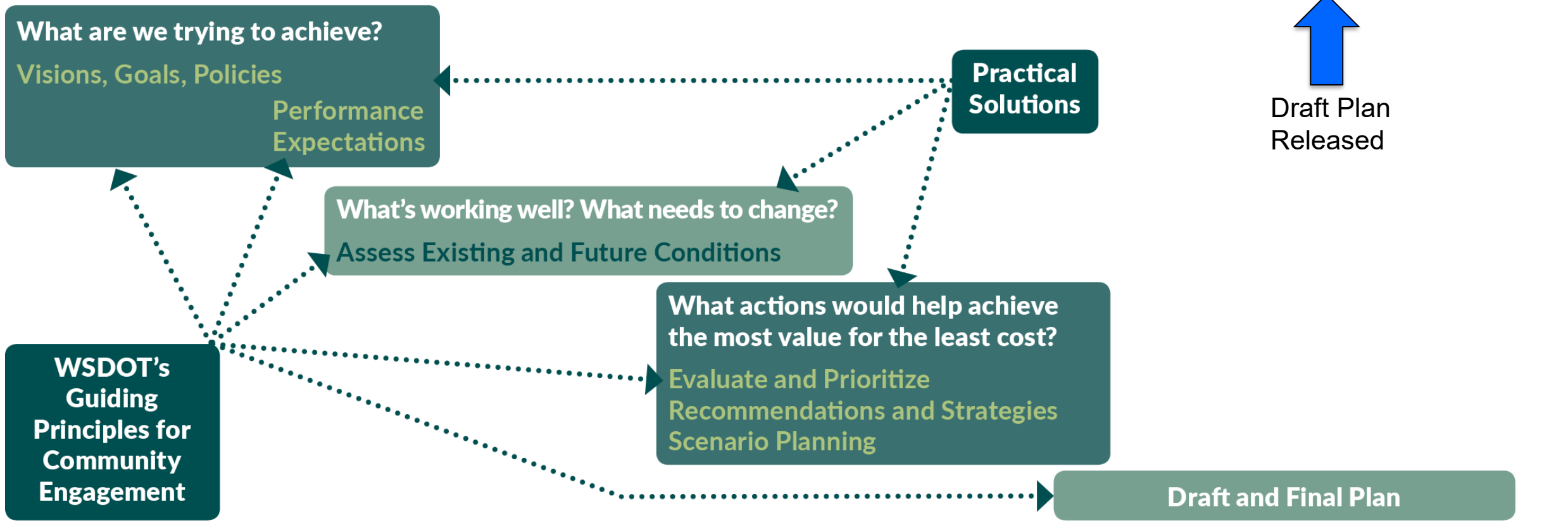
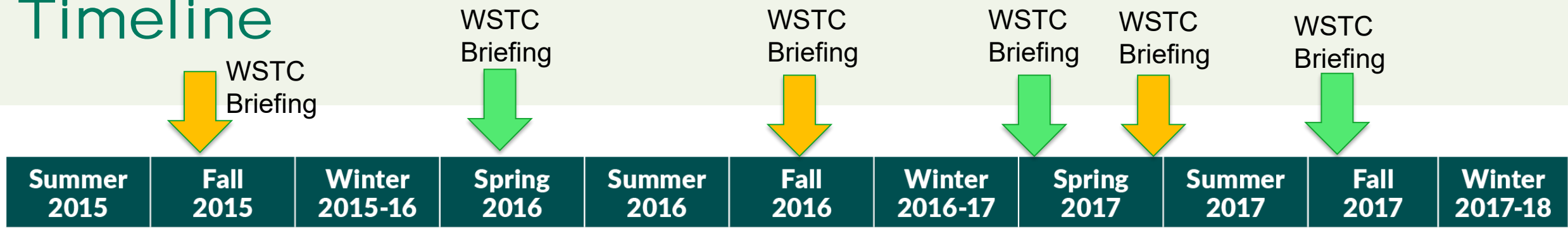
WTP Phase 2 – Implementation

Washington State Transportation Commission

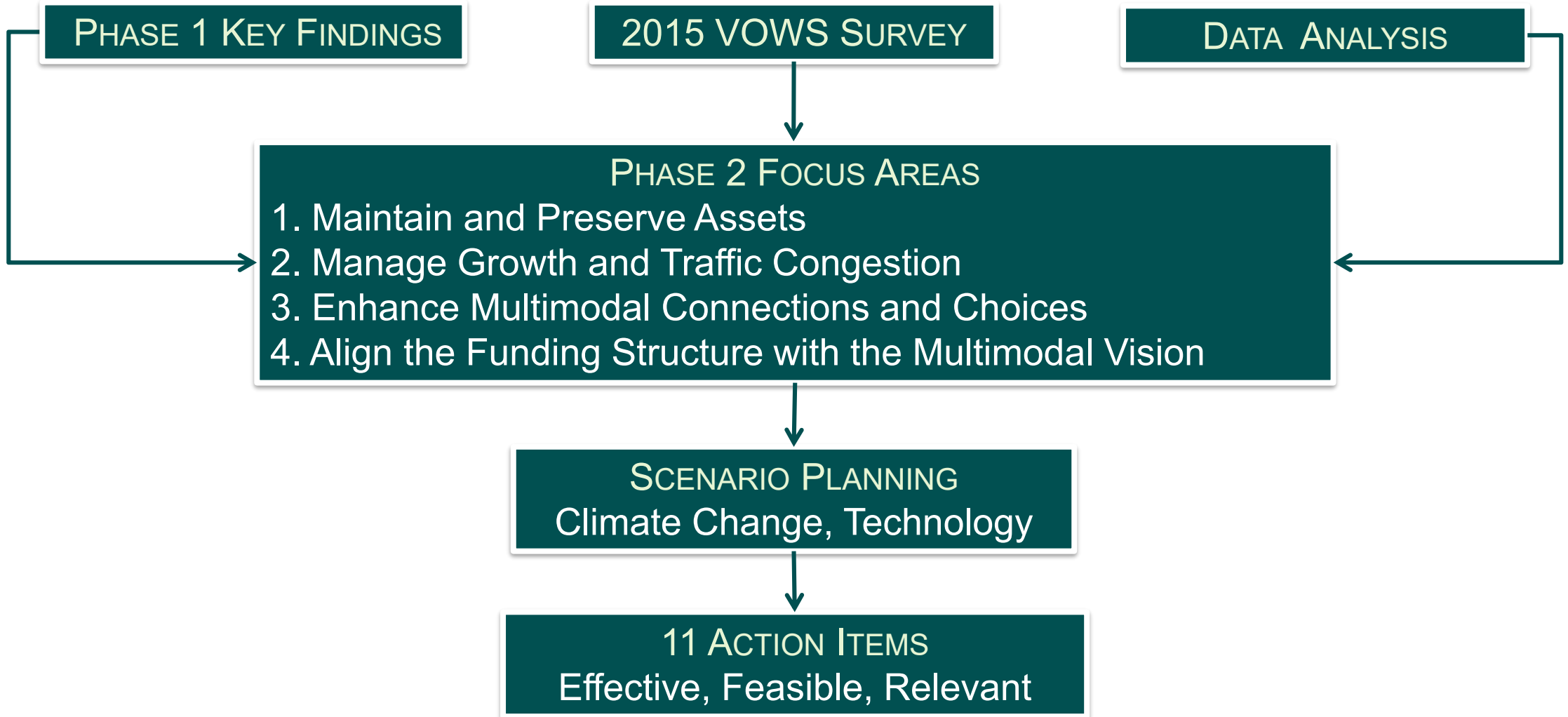
Elizabeth Robbins, Planning, Policy and Partnerships Manager – Multimodal Planning Division
Richard Warren, Manager – Planning Studies Group

October 17, 2017

Timeline



Reaching the Vision: Focus Areas & Action Items



THE VISION

By 2035, Washington's transportation system safely connects people and communities, fostering commerce, operating seamlessly across boundaries, and providing travel options to achieve an environmentally and financially sustainable system.

FOCUS AREAS

Maintain and Preserve Assets

Manage Growth and Traffic Congestion

Enhance Multimodal Connections and Choices

Align the Funding Structure with the Multimodal Vision

ACTION ITEMS

MP1

Maintain, preserve, and operate assets to meet desired performance on multimodal transportation systems before funding expansion projects

MG1

Promote transportation-efficient communities by coordinating state agency technical assistance to enhance planning's link to land use at all levels of government, the private sector, and other organizations

EC1

Work to achieve better travel time reliability and door to door multimodal connections for people of all backgrounds and abilities through continued application of practical solutions

FS1

Support funding flexibility to reduce barriers to creating an integrated multimodal system that achieves performance objectives

MP2

Support ways to help jurisdictions, transportation asset owners, and transportation service providers prepare for, respond to, and become resilient to emergencies and disasters

MG2

Prioritize access for people and goods instead of throughput for vehicles to improve multimodal options, livable communities, and economic vitality for people and businesses

EC2

Provide transportation facilities and services to support the needs of all communities, including populations with specialized needs, those in rural areas, and those who are under-represented, under-served, or disproportionately affected

FS2

Work to diversify and strengthen transportation revenue sources without compromising existing indebtedness

MG3

Research, evaluate, adapt to, and deploy technologies and innovations in all modes; share best practices

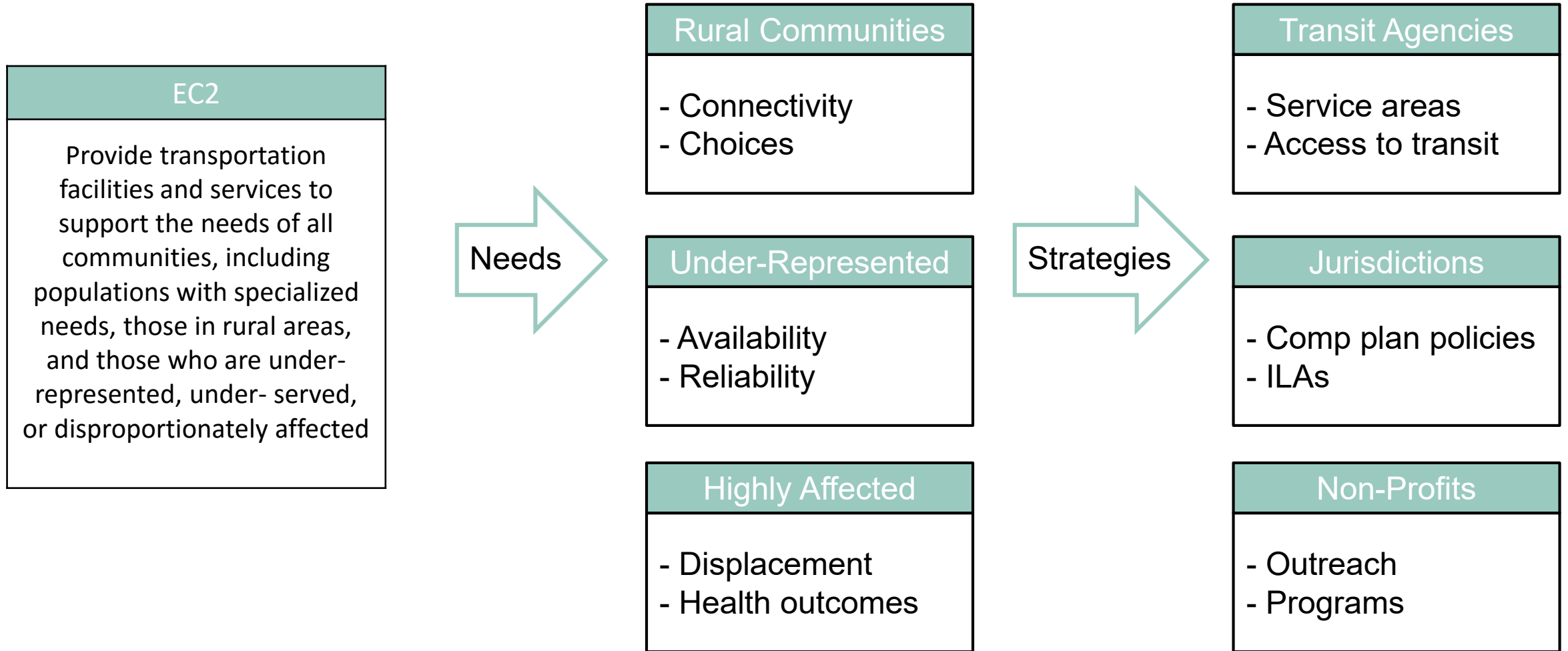
EC3

Adopt metrics for all modes to align with performance objectives

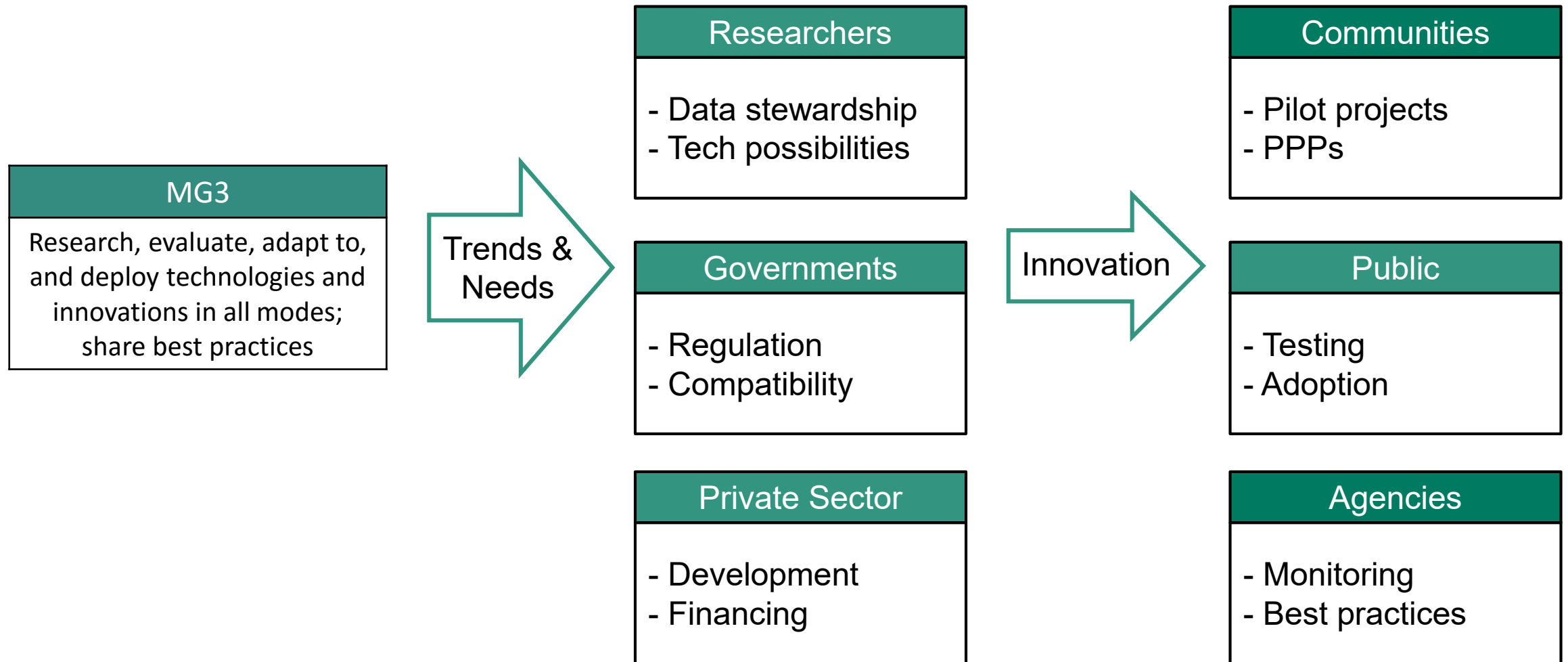
FS3

Address the constraints and opportunities for public-private partnership programs

Implementing the Action Items



Implementing the Action Items



Next Steps



- Continue community engagement efforts
- Review and respond to comments on the draft document
- Review revised document with Advisory Group and Steering Committee
- Secretary approves final plan
- Implement Phase 2 Action Items

Contact Information



- Richard Warren: warrenr@wsdot.wa.gov, 206-464-1283
- Kathy Murray: murraka@wsdot.wa.gov, 360-705-7951
- Justin Resnick: resnicj@wsdot.wa.gov, 206-464-1280
- Brigid Dean: deanb@wsdot.wa.gov, 206-464-1266

<https://washtransplan.com/>