

Fish Barrier Removal Board (FBRB)

Washington State Transportation Commission
Partnerships in Transportation and Fish Passage
March 21st, 1:40 PM
WSDOT Headquarters Building

Elements of the Salmon Recovery Strategy

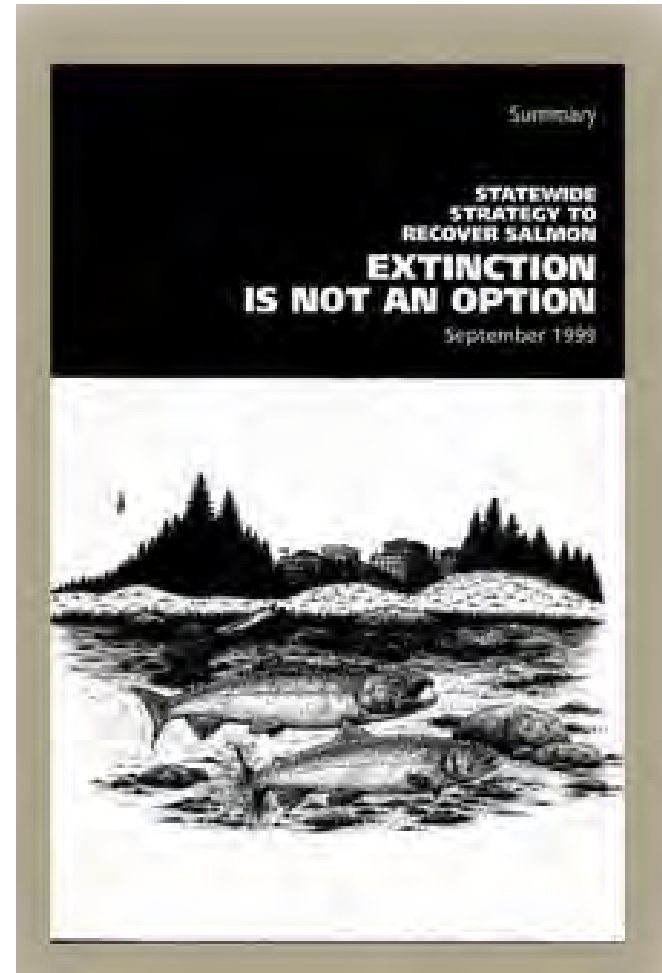
- **Habitat**

- Agriculture
- Forest practices
- Urbanization
- In-stream flow
- **Fish barriers**

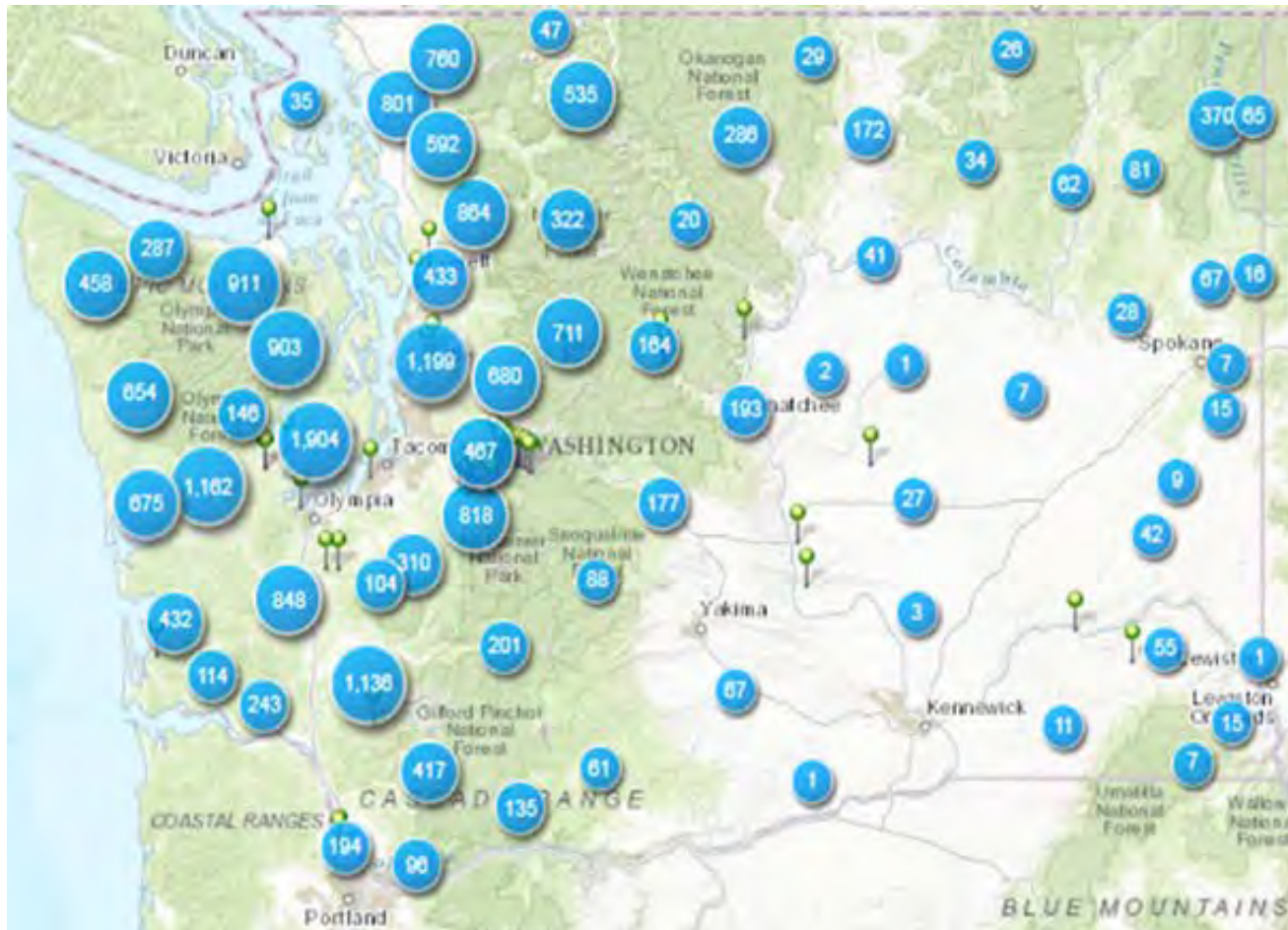
- **Harvest**

- **Hatcheries**

- **Hydropower**

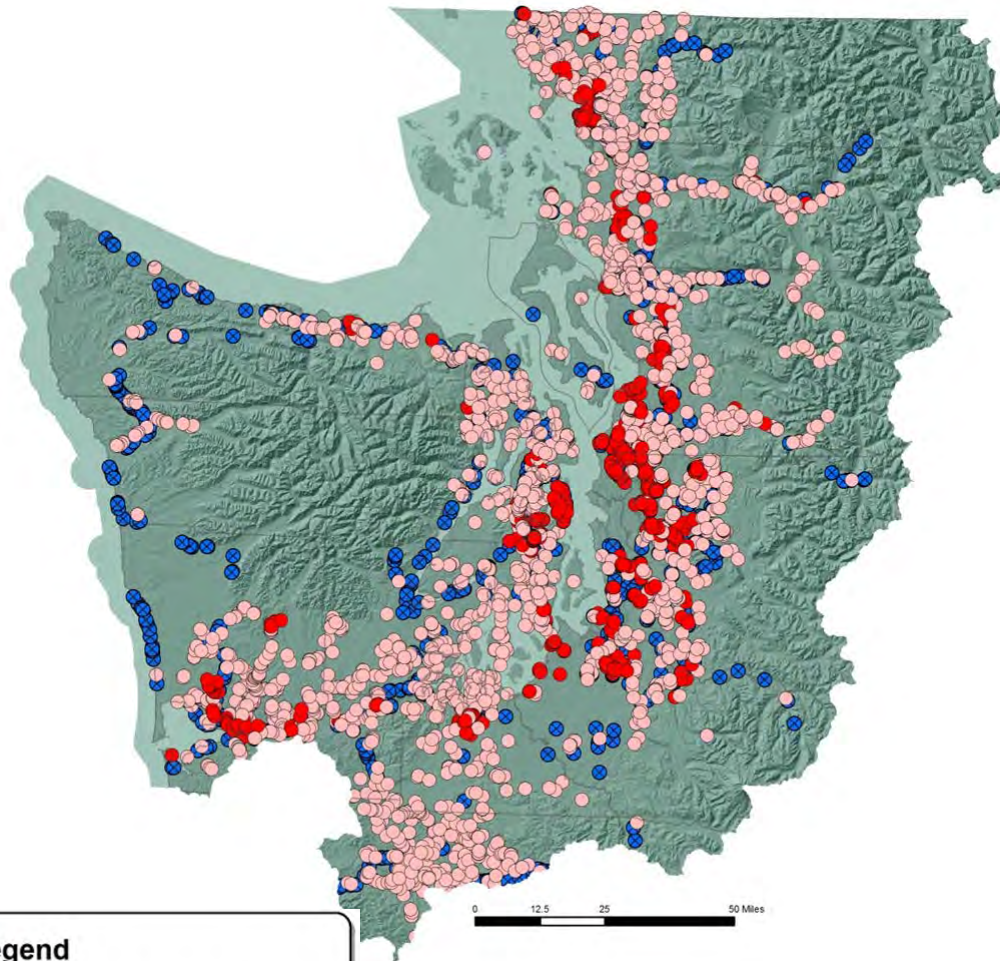


Extent of the Statewide Fish Passage Problem



- **35,000-40,000 man-made, complete and partial barriers statewide**
- **Federal, State, County, City, Tribal, Railroad and Private Ownership**

State, County & City Fish Passage Problem



Legend

- City Owned Barrier
- County Owned Barrier
- WSDOT Culvert Case Barriers

- **State:**
 - **WSDOT - 996 barriers subject to injunction and about 2,000 statewide**
 - **DNR, Parks and WDFW essentially finished with their injunction corrections**
- **County: 3,121 barriers in the culvert case area, but not subject to the injunction, 22,000 statewide**
- **City: 1090 barriers in the case area, but not subject to the injunction, 1241 statewide**

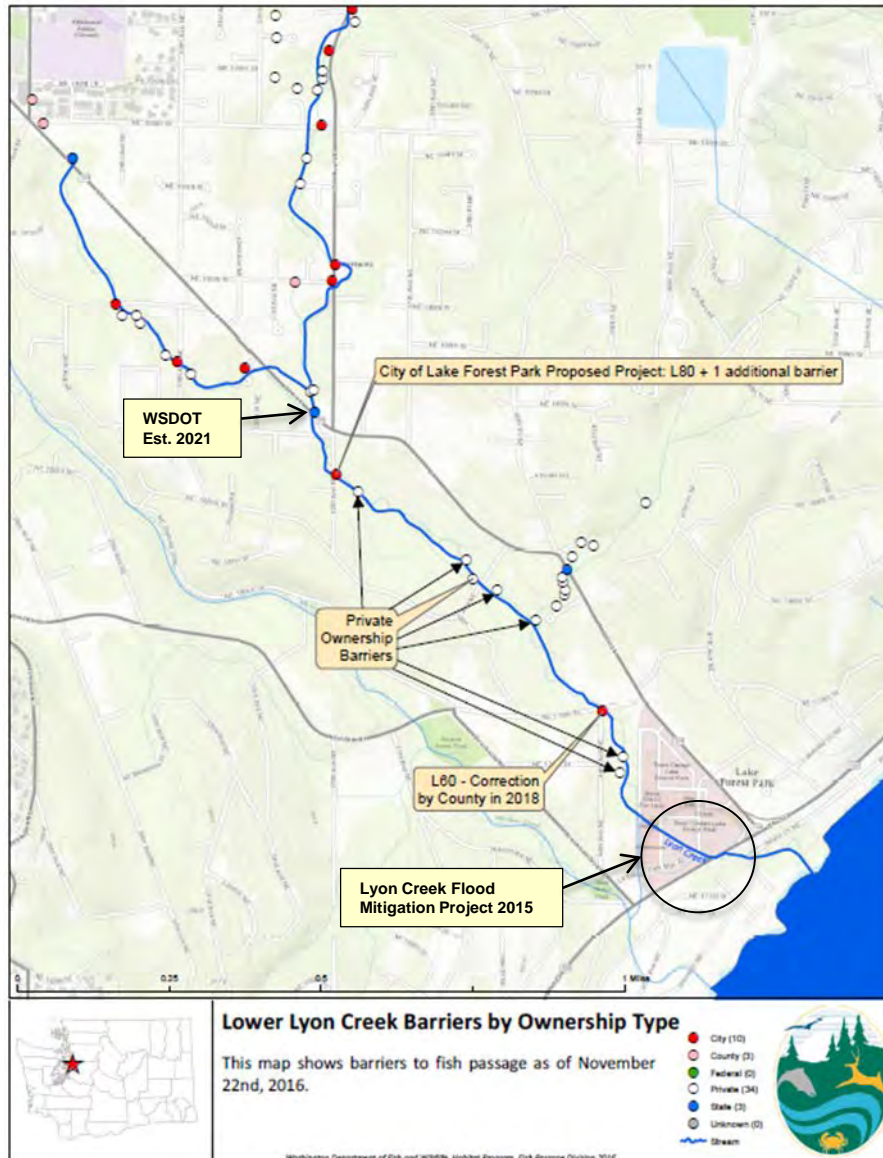
Note: Under the injunction the State is required to assess and identify culverts under state-owned roads in the Case Area that become partial or full barriers to salmon passage after the entry of the Injunction

County & City Fish Passage Problem



- Ennis Creek is widely recognized as having the highest potential for restoration amongst the urbanized streams in Port Angeles. Its headwaters are protected in Olympic National Park.
- Downstream the abandoned Rayonier Mill site has been dismantled and will be cleaned under a three way agreement between Rayonier, DOE, and Lower Elwha Tribe
- High priority for the city, local tribes, and restoration practitioners. The only barrier upstream is a WSDOT culvert scheduled to be fixed in 2025
- Currently unfunded, #33 on the FBRB's project list

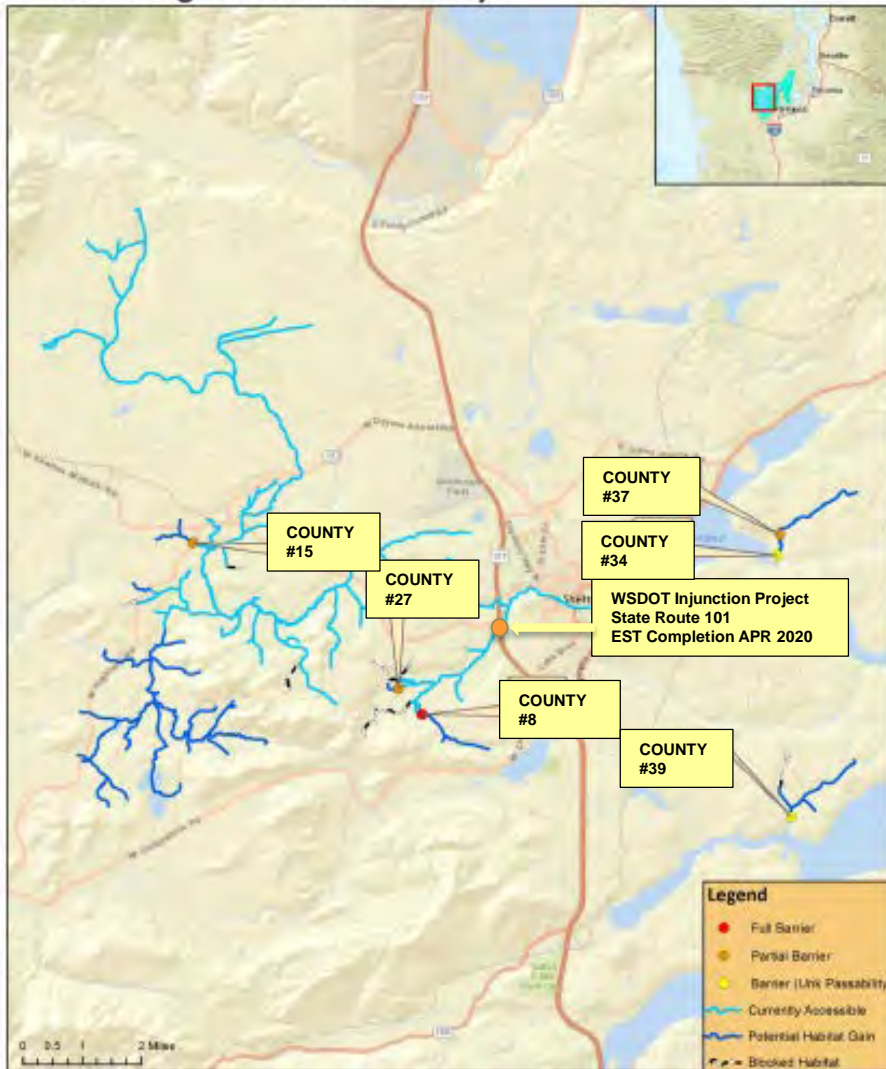
County & City Fish Passage Problem



- Lyon Creek is potentially home to three federally listed species of salmonids (Chinook, bull trout, & steelhead) and one salmonid species of concern (Coho).
- 2013-2015 FEMA, State and King County invested \$6.94M in completing the Lyon Creek Flood Mitigation Project
- City's and County's nominated projects were disqualified due to the presence of six privately owned partial barriers that lie downstream of the nominations
- WSDOT Barrier on SR104 slated to be made passable in 2021
- Currently not on the Governor's FBRB 2017-2019 project list

County Fish Passage Problem

Goldsborough Watershed Priority 1



WRIA 14 Salmon Habitat Recovery Committee Lead Entity

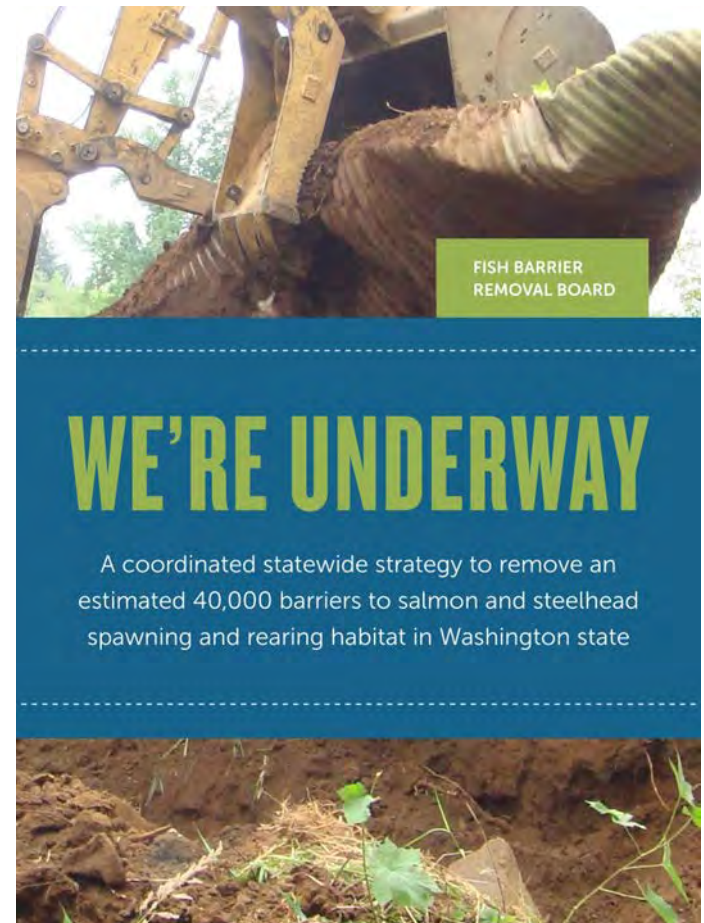
Fish Barrier
Removal Board
3/8/2017



- **Goldsborough Creek Watershed, Mason County, one of the FBRB's priority watersheds in Puget Sound.**
- **Barrier correction package of 6 county road barriers. If funded, would open 6 miles of habitat at a cost of \$12.7M**
- **WSDOT injunction barrier downstream, on SR101, slated to be made 100% passable by April of 2010**
- **Goldsborough Creek is home to Chum, Coho, Steelhead and Sea Run Cutthroat trout**
- **Currently only one of the crossings is on the Governor's list for funding in 2017-2019, #8 of the 13 projects**

Fish Barrier Removal Board

- Established by legislature in 2014 (SSHB 2251 Representatives Wilcox, Blake, Orcutt, and Clibborn)
- Chaired by WDFW
- Members: DOT, DNR, RCO, cities, counties, tribes, salmon recovery boards
- Mission: to develop a statewide strategy for correcting fish barriers
- 2017 Request: Funding for prioritized list of barriers for corrections



Two Barrier Removal Pathways

Coordinated Pathway

- Correct barriers in close proximity to other barrier repairs.
- Leverage investments of WSDOT, forest industry, and local governments.
- Local governments submitted nominations (September 2015).

Watershed Pathway

- Correct barriers that open whole stream reaches and sub-basins.
- Maximize benefits to salmon at a population scale.
- Lead Entity and Salmon Recovery Regions submitted priority watershed nominations (July 2015)

Coordinated Pathway Ranking Criteria

- No Downstream Barrier(s)
- **Habitat Quality**
- **Cost per Linear Gain**
- **Lowest Barrier in a Stream First**
- Linear Gain (net)
- Project Readiness
- **Barrier Status**
- Number of Anadromous Species/Stock
 - **Stock Status**
- **Level of Coordination**



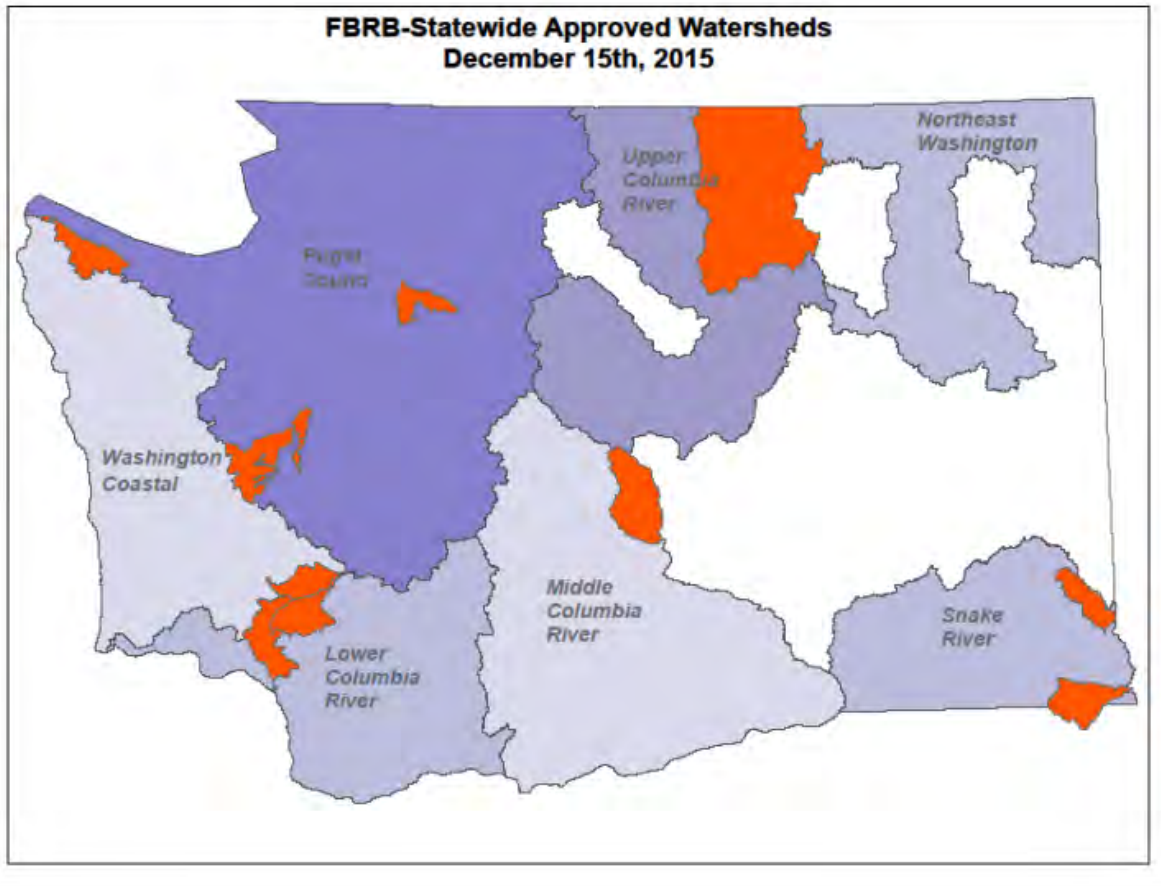
(As set forth by SSHB 2051)

Coordinated Pathway

15 Projects: 10 County, 3 City, 2 Private Barriers



Watershed Pathway



Statewide

Lead Entity Nominated

- Lower Columbia - Cowlitz
- Yakima Basin - Wilson/Cherry
- Upper Columbia - Okanogan
- Snake River
 - Snake River Tributaries
 - Grande Ronde Tributaries

P.S. - Board Selected

- Pysht River
- Pilchuck River
- Goldsborough Creek

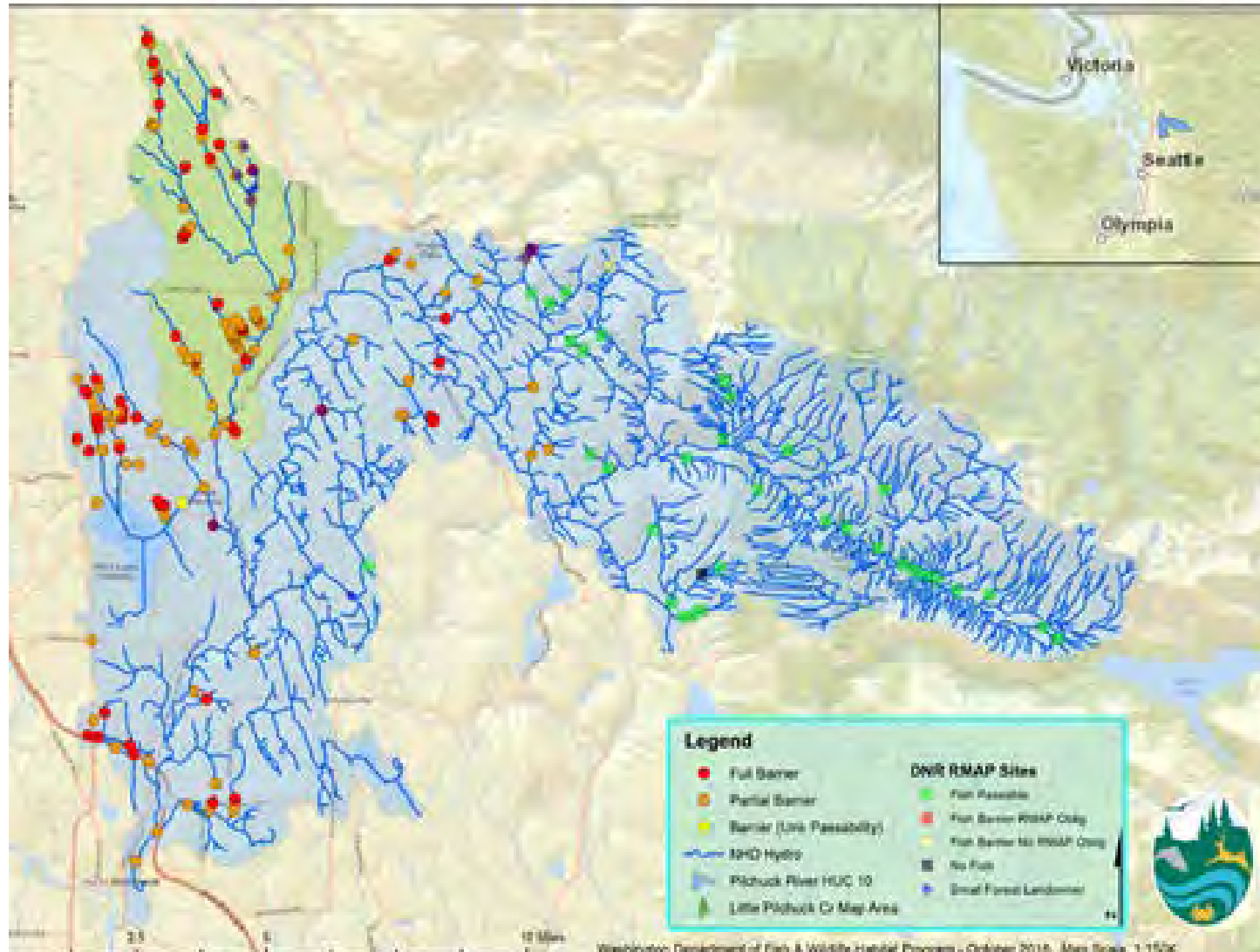
Coast - Board Selected

- Newaukum River

Watershed Pathway Projects

64 Projects: 37 County, 3 City, 17 Private, 7 State Barriers

Pilchuck River Basin Fish Passage Barriers



FBRB 17-19 Project List

79 Projects, 160 Miles of Habitat,

\$51.4 M Funding Request

Puget Sound & Hood Canal

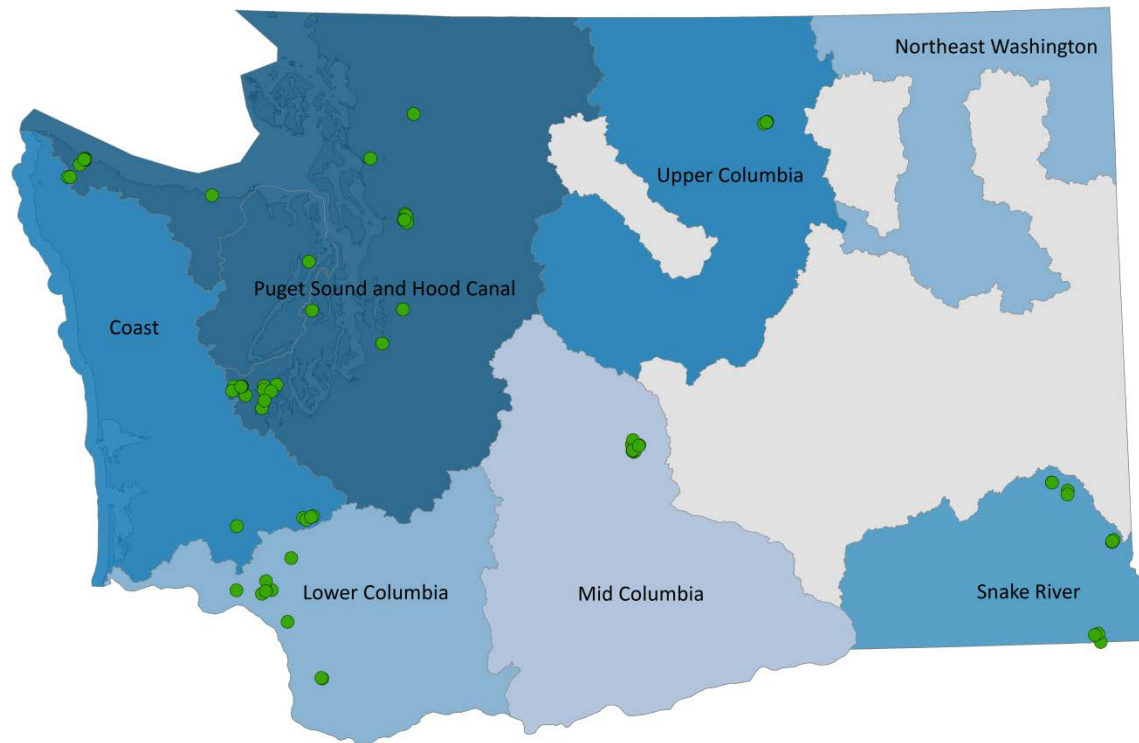
36 projects
91 miles
\$23.4M

Washington Coast

6 projects
10.6 miles
\$3.3M

Lower Columbia

10 projects
25.3 miles
\$8.3M



Upper Columbia

5 projects
1.6 miles
\$4.8M

Middle Columbia

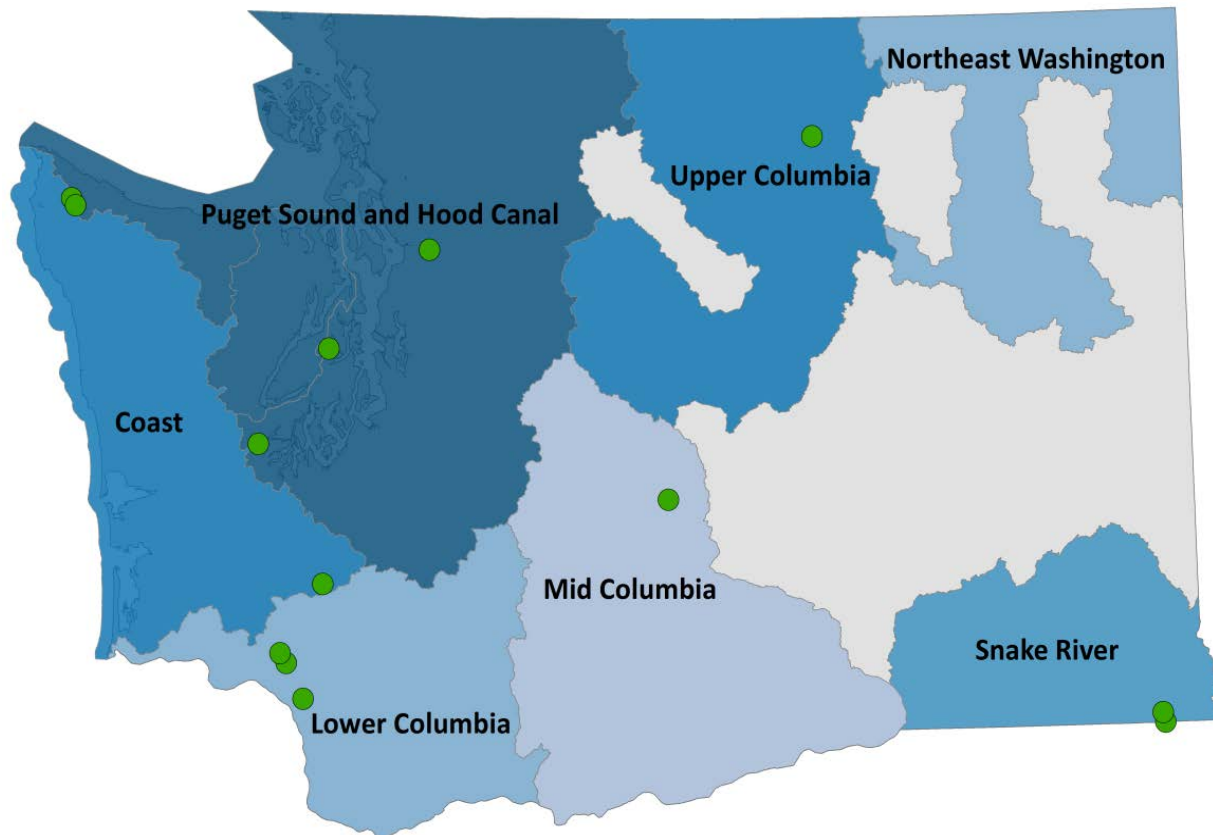
8 projects
6.9 miles
\$3.6M

Snake River

11 projects
17.8 miles
\$8.0M

FBRB 17-19 Project List

13 Projects, 42.8 Miles of Habitat,
\$19.7M Funding in Governor's Budget



Project Ownership: 8 County, 2 City, 2 State, 1 Private

Questions?



Contact

For more information about the
Fish Barrier removal Board, please contact:

Tom Jameson, Division Manager,
Washington Department of Fish and Wildlife
(360) 902-2612,
thomas.jameson@dfw.wa.gov

Gary Rowe, Managing Director,
Washington State Association of County Engineers
(360) 489-3014
growe@wsac.org

Carl Schroeder, Government Relations Advocate
Association of Washington Cities,
(360)753-4137
carls@awcnet.org