

# SR 520 Program

**Progress update: March 2017**

Denise Cieri, P.E., SR 520 Deputy Program Administrator

Washington State Transportation Commission

March 21, 2017

# SR 520 Program overview and timeline

## Program map



## Program schedule

- Eastside Transit and HOV Project: Opened 2014
- Pontoon Construction Project (Aberdeen): Completed 2015
- New floating bridge: Opened April 2016
- West Approach Bridge North: Opening 2017
- Remaining west side corridor: Fully funded, construction to begin by 2018

# SR 520 costs and funding (design and construction)

<b>SR 520 program cost estimate</b> <i>Note: 2009 Legislative spending cap is \$4.65 billion</i>	<b>\$4.56 B</b>
<b>Funding received</b> <i>Note: Based on 2015 Legislative authorization</i>	<b>\$4.56 B</b>
<b>Funding sources (below)</b>	
State funding (primarily Motor Vehicle Fuel Tax)	\$0.61 B
State funding (Connecting Washington Account)	\$1.64 B
SR 520 Account (tolling and future federal funds)	\$1.65 B
Federal TIFIA loan	\$0.30 B
Other federal funding	\$0.20 B
Deferred sales tax	\$0.16 B

*Includes \$1.64 billion in new revenue authorized in 2015 via ESSB 5988, Updated: December 2015*  
*Includes \$14 million authorized in 2015 via 2ESHB 1299,*  
*Includes \$10 million in existing agency resources authorized in 2014 via ESSB 6001.*

# West Approach Bridge North construction progress



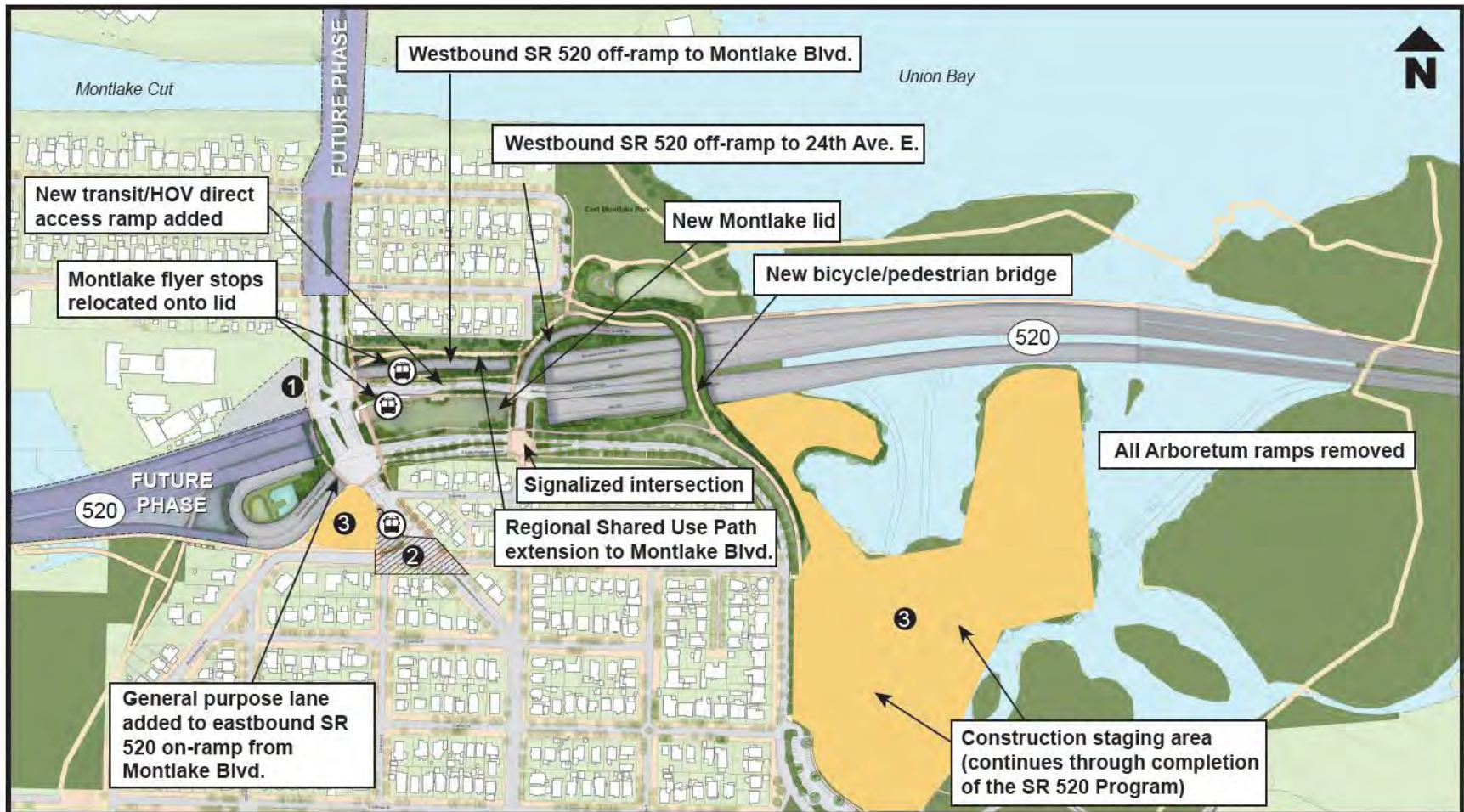
# Rest of the West project overview



- Phase 1: Montlake Phase**  
Construction to begin in 2018  
Estimated duration: 4-5 years
- Phase 2: Portage Bay Phase**  
Construction to begin in approx. 2020-2022  
Estimated duration: 6 years
- Phase 3: Montlake Cut Crossing Phase**  
Construction to begin as early as 2024  
Estimated duration: 3 years

# Montlake Phase key elements

(shown at completion of Montlake Phase)



- 1 Possible future use of a portion of the NOAA property, approximating the area shown in the FEIS, for a public pedestrian-bike path is subject to agreement by NOAA as a part of ongoing mitigation discussion.
- 2 City-owned property under review by the City of Seattle.
- 3 Area needed for project improvements and construction staging and phasing.

Note: Construction schedules and staging areas are subject to change as design and construction plans are confirmed.

# Montlake Phase design visualizations



*A new Montlake lid will provide neighborhood open space and multimodal transportation connections.*

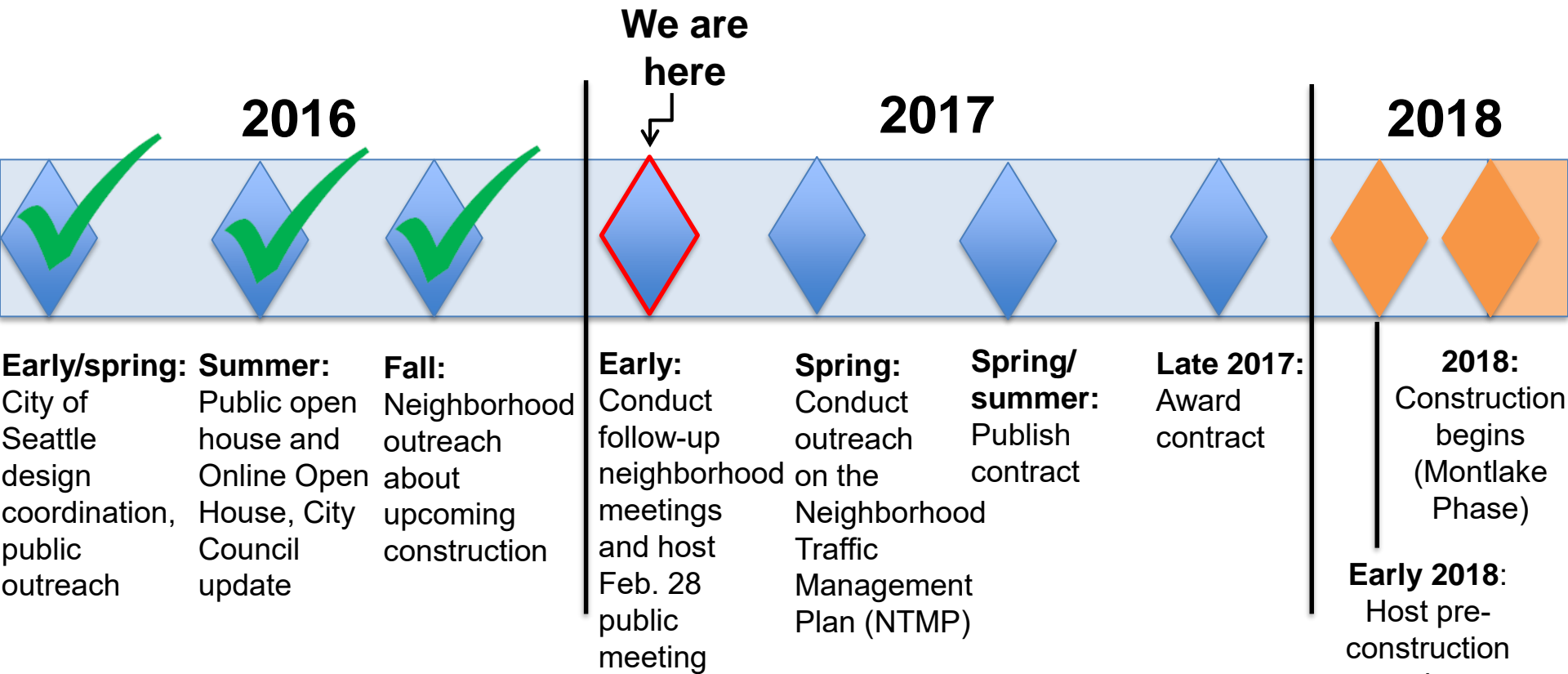


*Conceptual rendering of the land bridge over SR 520, looking northeast, approaching an outlook viewpoint. The land bridge connects local greenways around the Arboretum and to the University of Washington for a variety of recreation users.*







# How is WSDOT preparing for construction of the Montlake Phase?



**Key:**

 Project/outreach milestone

 Construction milestone

**Ongoing:** City of Seattle coordination, outreach to key stakeholders and the community, monthly construction meetings

**Note:** These dates reflect the current project plans, but are subject to change as needed.

# Montlake Phase public outreach

WSDOT continues to conduct outreach to share project updates with the community in advance of construction:

## 2016

- ✓ Provided **more than 30** briefings to local community organizations in 2016
- ✓ Hosted June open house event
- ✓ Shared June-July Online Open House
- ✓ Provided four fall frontline neighbor outreach meetings with nearby residents

## 2017

- ✓ Provided follow-up frontline neighbor outreach meetings
- Conduct broader neighborhood spring outreach on key topics such as traffic and noise
- Hire Ombudsman/community liaison position

## 2018

- Conduct additional pre-construction outreach with contractor
- Begin construction



*Nearly 300 people joined WSDOT and the City of Seattle at the June 28, 2016 open house in Seattle.*

# Frontline neighbor outreach update

At follow-up meetings in early 2017, WSDOT shared a number of key measures to minimize construction impacts.

## Key topics discussed:

- Construction impacts
- Aesthetics
- Communications
- Health and safety
- Traffic
- Design and other concerns

## Examples of key measures planned for the Montlake Phase:

- Install construction screening where possible and agreed upon
- Hire an Ombudsman/community liaison starting in 2017
- Pave access roads where possible to reduce dust
- Prohibit the contractor from parking on local streets in residential areas
- Require that the construction site be kept clean
- Provide safe and clearly marked bicycle and pedestrian detour routes

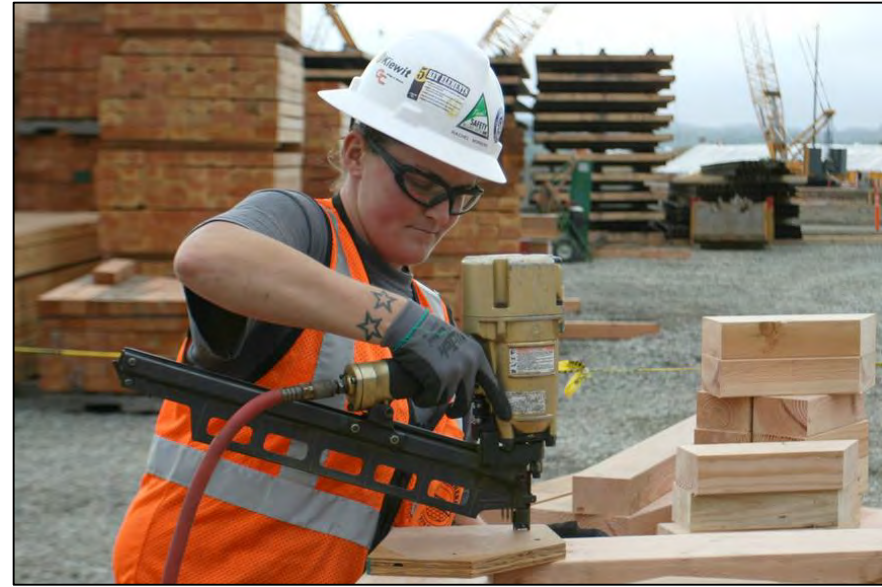


*Map of locations of SR 520 frontline neighbor outreach meetings.*



# SR 520 Diversity in contracting

- The SR 520 Program and its multiple construction phases include a number of contracting goals:
  - Disadvantaged Business Enterprise (DBE) participation
  - Apprenticeship hours
  - Training hours
  - Minority, Small, Veteran, and Women's Business Enterprise (MSVWBE) participation
- The SR 520 Program tracks and monitors its progress in meeting these goals as part of its robust Diversity and Inclusion Program. Overall, the SR 520 Program is meeting or exceeding these goals as part of its design and construction efforts.
- The SR 520 Program also:
  - Reaches out to small and disadvantaged firms to share upcoming contracting opportunities
  - Coordinates closely with WSDOT's Office of Equal Opportunity
  - Produces a quarterly Diversity and Inclusion report, which is available on the project website



# Next steps

- **Summer 2017:** West Approach Bridge North (WABN) scheduled to open to traffic
- **2017:** Award contract for Montlake Phase of construction in Seattle (includes the West Approach Bridge South, Montlake lid and land bridge)
- **Early 2018:** Conduct additional pre-construction outreach with contractor
- **2018:** Begin construction of Montlake Phase



# Questions?

For more information:

**Visit:** [www.wsdot.wa.gov/projects/SR520Bridge](http://www.wsdot.wa.gov/projects/SR520Bridge)

**E-mail:** [SR520Bridge@wsdot.wa.gov](mailto:SR520Bridge@wsdot.wa.gov)

**Call:** 206-770-3554

**Mail:** SR 520 Bridge Replacement and HOV Program  
999 3rd Avenue, Suite 2200  
Seattle, WA 98104

