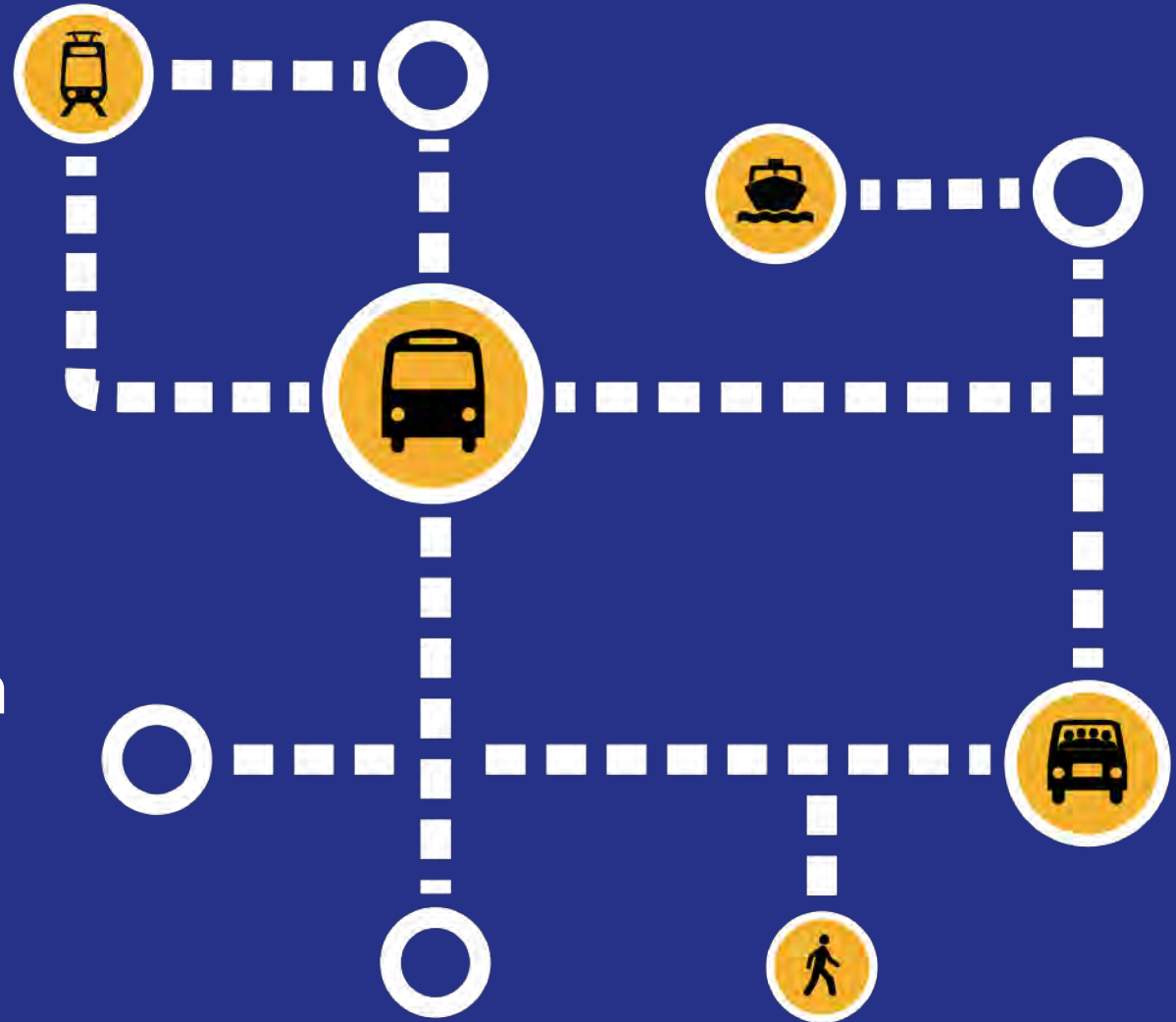


Washington State Transportation Commission

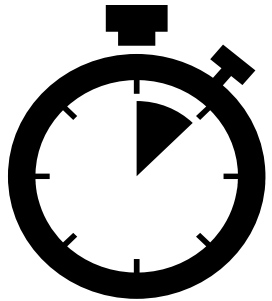
King County Metro Updates

November 19th, 2019



Accommodating future growth

Metro plans to increase service 70% by 2040.



Add 2.5 million more service hours on bus routes



Add 625 more buses



Create more facilities needed to operate and maintain buses



South Campus Expansion

2020

Interim Base at South Campus

- ▶ Build a temporary base to support 125 buses
- ▶ Convert parking garage for Metro employee use

2025

South Annex Base

- ▶ Construct a new permanent base for 250 buses in place of Metro's current training facility across from South Base in Tukwila
- ▶ Acquire the property for relocation of some South Campus operations to allow for South Annex Base construction
- ▶ Relocate other existing functions from South Annex property to allow for construction beginning as early as 2022

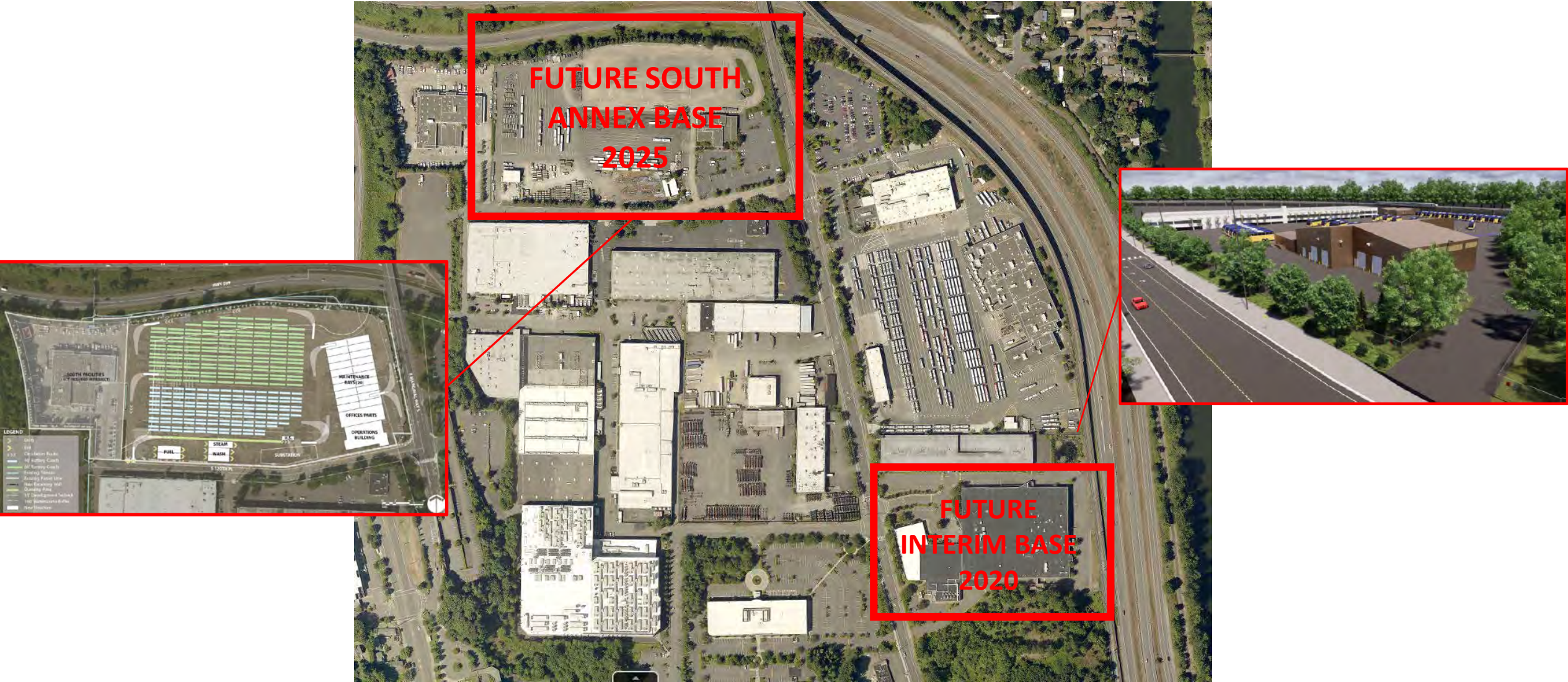
2040

Zero-emission fleet

- ▶ Test infrastructure to power an all-electric fleet at Interim Base
- ▶ Retrofit all existing bases for electric bus charging by 2040



South Campus



South King County Base

2020

3 to 1 Selection Process
Initiate FTA Concurrence Process

2024

Acquisition Complete (Target)

2026

Construction Commencement

2030

Operational



Site Search & Selection

Targeted Features:

- Approximately 30 acres (250–300 buses)
- Access to major freeways and arterials
- Rectangular in shape

Evaluation Criteria

- Deadhead Cost
- Impacted Populations
- Site Constructability
- Sensitive Areas
- Equity & Social Justice Opportunities



South King County Transit Service

November 19, 2019

Renton-Kent-Auburn Area Mobility Plan
RapidRide I Line
Federal Way Link Extension Restructure



Renton-Kent-Auburn Area Mobility Plan

- Improve **equitable transit access**
- Increase **network efficiency** and invest in equity priority areas
- Develop a **network of mobility** services
- Create a **single route** from Renton to Kent to Auburn to be upgraded to the **RapidRide I Line**



Types of Changes



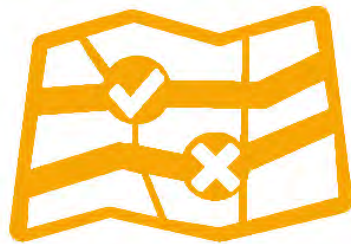
Re-allocating service from peak routes to all day routes



Simplifying the network



Eliminating a route



Re-allocating service to a new pathway



Implementing new service



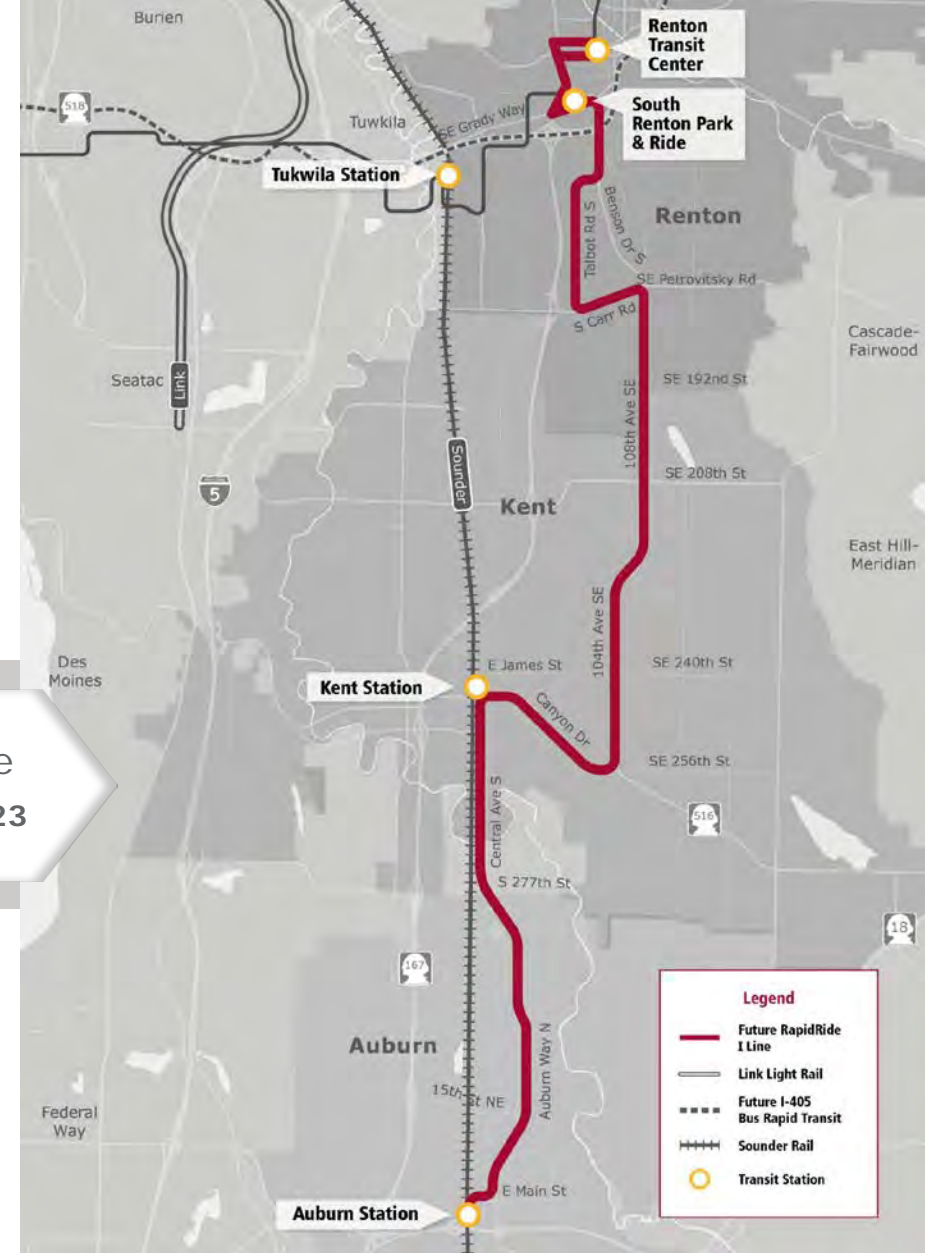
Adding service

I Line Overview

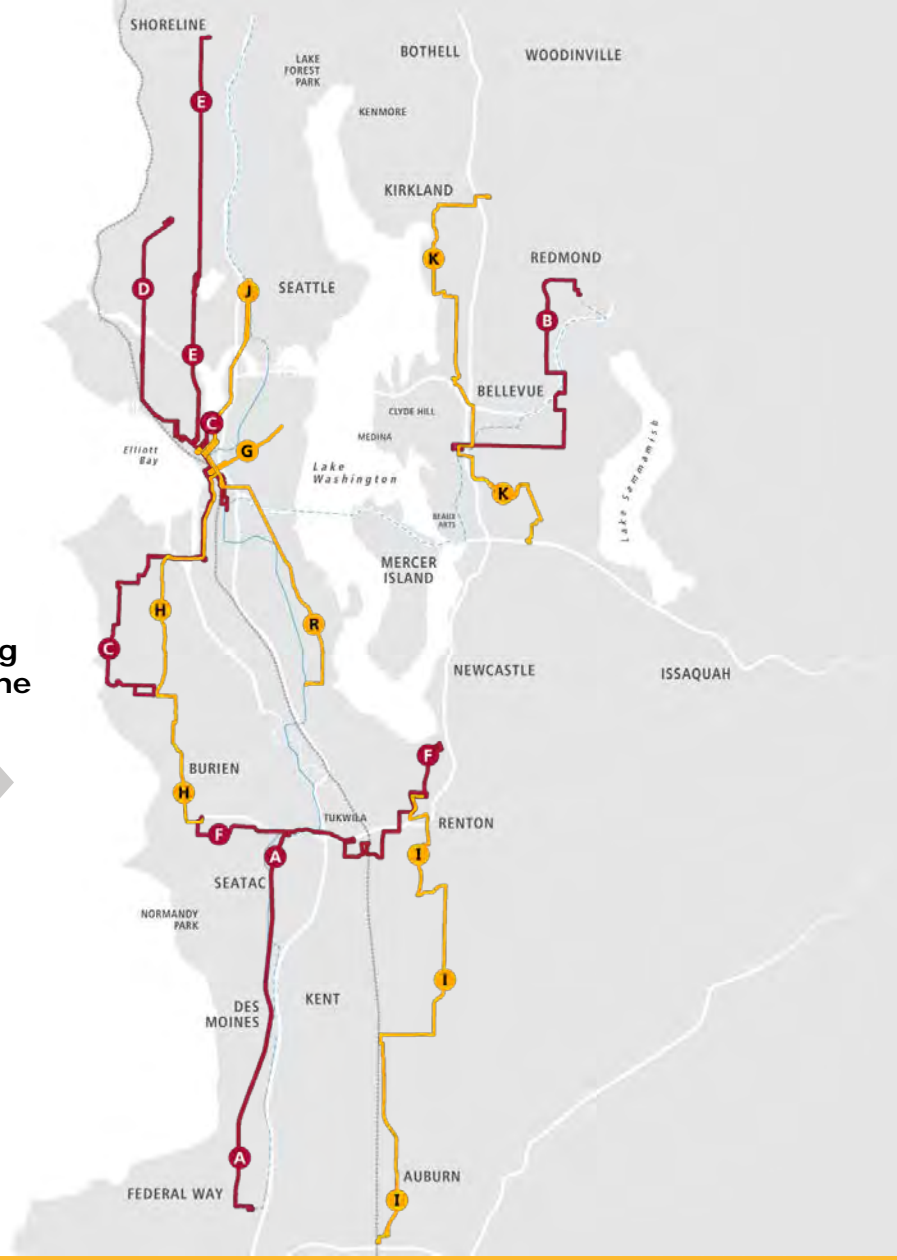
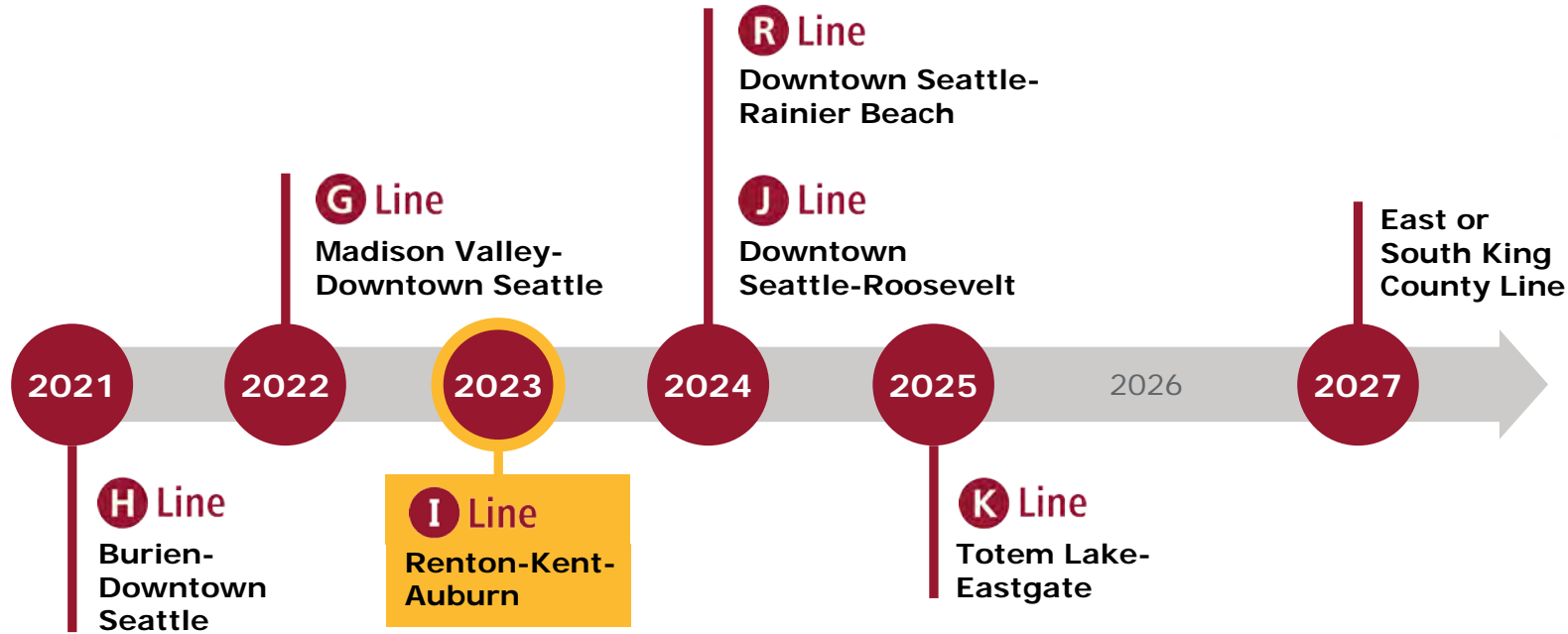
- Upgrades current routes 169 & 180
- 6,000 Daily riders
- ~\$120M capital investment



- PHASE 1: Needs Assessment (Spring 2019)
- PHASE 2: Draft Concepts (Summer 2019)
- PHASE 3: Final Concepts (Fall 2019)



RapidRide Expansion Timeline



Federal Way Link Extension Restructure

- Service integration project planned for 2023-24
 - Project scope will include community and stakeholder engagement and in-depth technical analysis
 - Will build on Renton-Kent-Auburn Area Mobility Plan
 - Metro coordinating with Sound Transit
 - RapidRide A Line will serve three new stations

METRO CONNECTS DEVELOPMENT PROGRAM

Demand for transit is rising throughout King County, driven by job and population growth, as well as by the increasing number of people who choose transit, including those living in poverty or near poverty. Metro developed its long range vision, METRO CONNECTS, to meet these increasing demands. Metro has also identified a four-part strategy, shown below, that will guide the agency towards implementation of METRO CONNECTS in the near-term. This strategy has defined targets identifying the achievements we should aim for in order to make progress towards the METRO CONNECTS vision.

To provide a roadmap for implementing the near-term 2025 METRO CONNECTS vision, Metro has established a Regional Project Schedule to outline the major service and capital projects and programs needed to move towards that vision and meet these ambitious targets. This 2019 update of the schedule documents the major steps that Metro is taking to implement the vision in the 2019–2024 time period using current revenue sources. The update reflects Metro's adopted 2019–2020 budget. The schedule is dynamic, and will continue to be updated as Metro's financial outlook, organizational capacity to deliver, and partnership potential becomes clearer.

Metro's 4-part strategy and targets (near term by close of 2019; four years by close of 2022)

- 1 MAKE TRANSIT EASY TO USE, AVAILABLE TO ALL**
Provide integrated, equitable and accessible mobility service
TARGETS:
 - ▶ Near term: 135 million Metro rides
 - ▶ Four years: 235 million rides in King County across all Metro-operated or partnered services.
- 2 GET THINGS BUILT**
Accelerate the development of transit infrastructure that is critical to service growth
TARGETS:
 - ▶ Near term: Cut in half the capital planning and delivery process, deliver projects at twice the rate we do today
 - ▶ Four years: Eighth base built
- 3 PARTNER WITH OTHERS**
Amplify the capacity of our system through partnerships
TARGETS:
 - ▶ Establish a clear definition of "partnership" and a template for use throughout Metro, and launch five priority public mobility partnerships
 - ▶ Four years: Using METRO CONNECTS Development Program, deliver 20 transit corridors—RapidRide, express and frequent
- 4 ENABLE EMPLOYEES TO DO TOP QUALITY WORK**
Deliver by building a highly motivated and high-performing workforce.
TARGETS:
 - ▶ Near term: Increase employee well-being and performance by starting one wellness center in 2019; have wellness centers in all bases in five years
 - ▶ Four years: Partner with local colleges and training centers to develop five internship programs

Guiding Service Principles Principles used to guide the sequencing of major mobility projects

- 1 Work within Metro's organizational capacity and manage constraints.
- 2 Manage system performance.
- 3 Integrate service with Sound transit projects.
- 4 Deliver the METRO CONNECTS 2025 Service Network by supporting partnerships and partner priorities.
- 5 Deliver the remaining METRO CONNECTS 2025 service network by investing in service that supports productivity, social equity and geographic value throughout King County. Implement the remaining parts of the METRO CONNECTS 2025 network, prioritizing RapidRide expansion and associated ridership growth.

Major Updates to 2019 Regional Project Schedule

- ▶ Updated RapidRide and Mobility Project implementation schedule
- ▶ New detail on capital improvements for the Core Service Network
- ▶ Additional detail on the capital programs and implementation timing

1/9/19
King County METRO