

# Cascade Mill District Development Project East-West Connector

WSDOT, City of Yakima, and Yakima County

May 16, 2018

**Brian White, P.E.**

WSDOT-South Central Assistant Regional Administrator  
For Construction and Development



**Brett Sheffield, P.E.**

City of Yakima-Chief Engineer



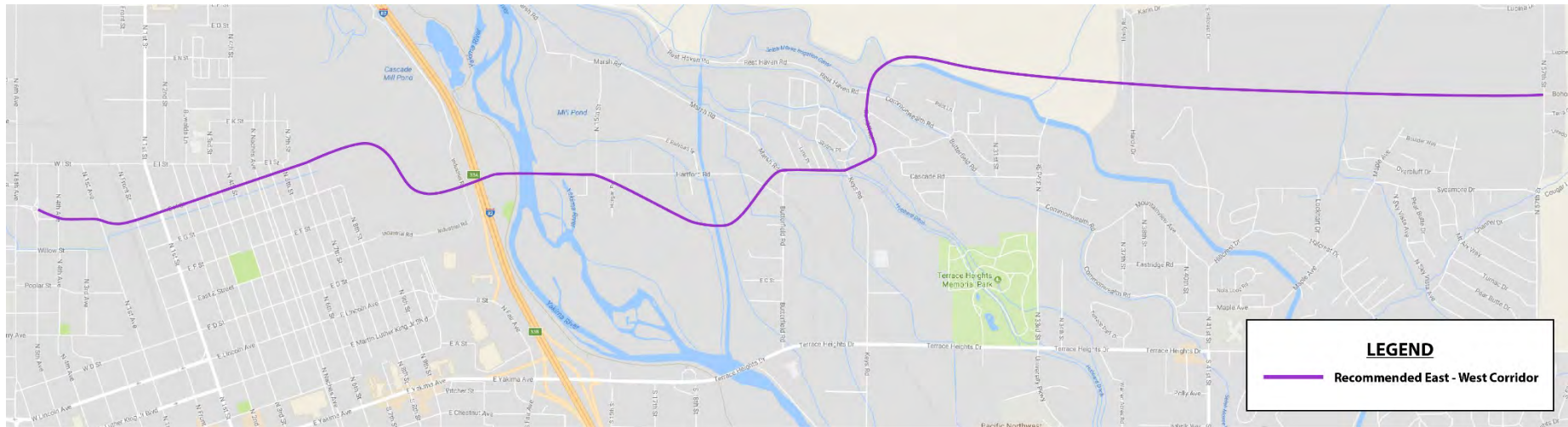
**Matt Pietrusiewicz, P.E.**

Yakima County-County Engineer



# East-West Corridor & GMA

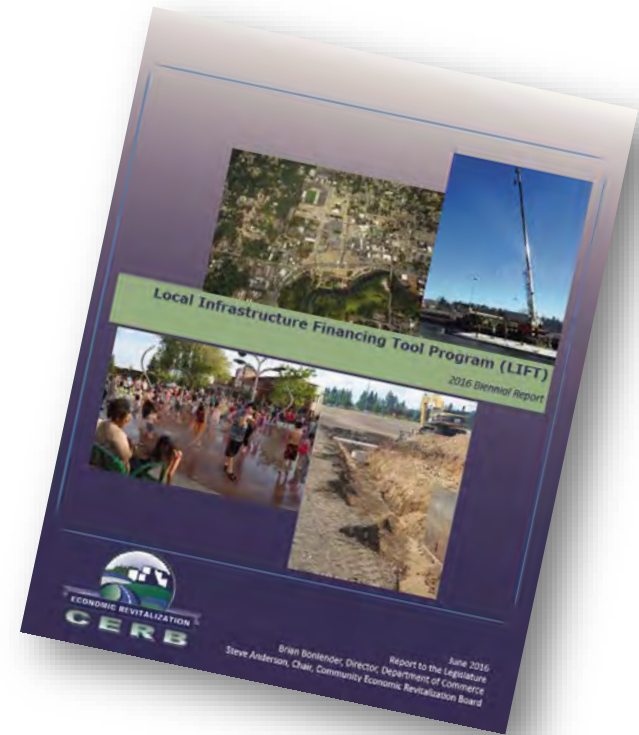
- 2011 Terrace Heights Corridor Study – Yakima Ave. Interchange > LOS D
- Potential GMA Trigger for Concurrency
- 2012 Alignment alternatives Report



**Huibregtse, Louman Associates, Inc.**  
CIVIL ENGINEERING • LAND SURVEYING • PLANNING

# Boise Cascade Mill Closes

- 1903 Cascade Lumber Opens Mill in Yakima
- 2006 Yakima Resources announced mill closure
- Community loses 225 jobs
- Opens path for East-West Corridor
- Successful Local Infrastructure Financing Tool
  - Potential to create 4,500 jobs
  - \$337M in private investment
  - \$426M in tax revenue over 30-years



**LOCHNER**



**Huibregtse, Louman Associates, Inc.**  
CIVIL ENGINEERING • LAND SURVEYING • PLANNING

# Interchange Modification

- Modification to Interstate Access Requires Interchange Justification Report (IJR)
  - Efforts by the City, County & WSDOT Succeeded
  - Feb 22, 2017 FHWA Issues finding of Engineering & Operational Acceptability



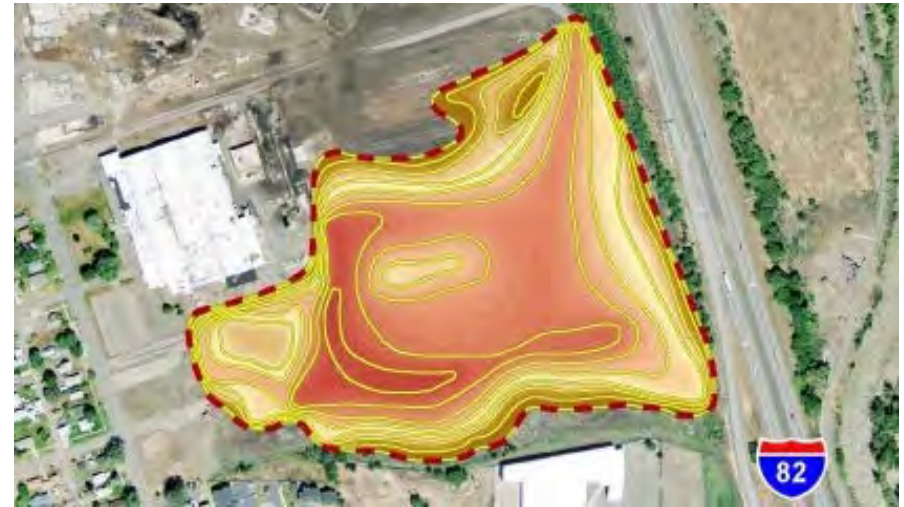
**LOCHNER**



**Huibregtse, Louman Associates, Inc.**  
CIVIL ENGINEERING • LAND SURVEYING • PLANNING

# Environmental Benefit

- Closed Municipal Solid Waste Landfill
  - Located south of RR tracks on former Mill Site
  - Approximately 28 acres
  - 388,000 to 452,000 CY of MSW in former log ponds
- Operated by City from 1962 – 1972
- Currently owned by OfficeMax, leased to Yakima Resources

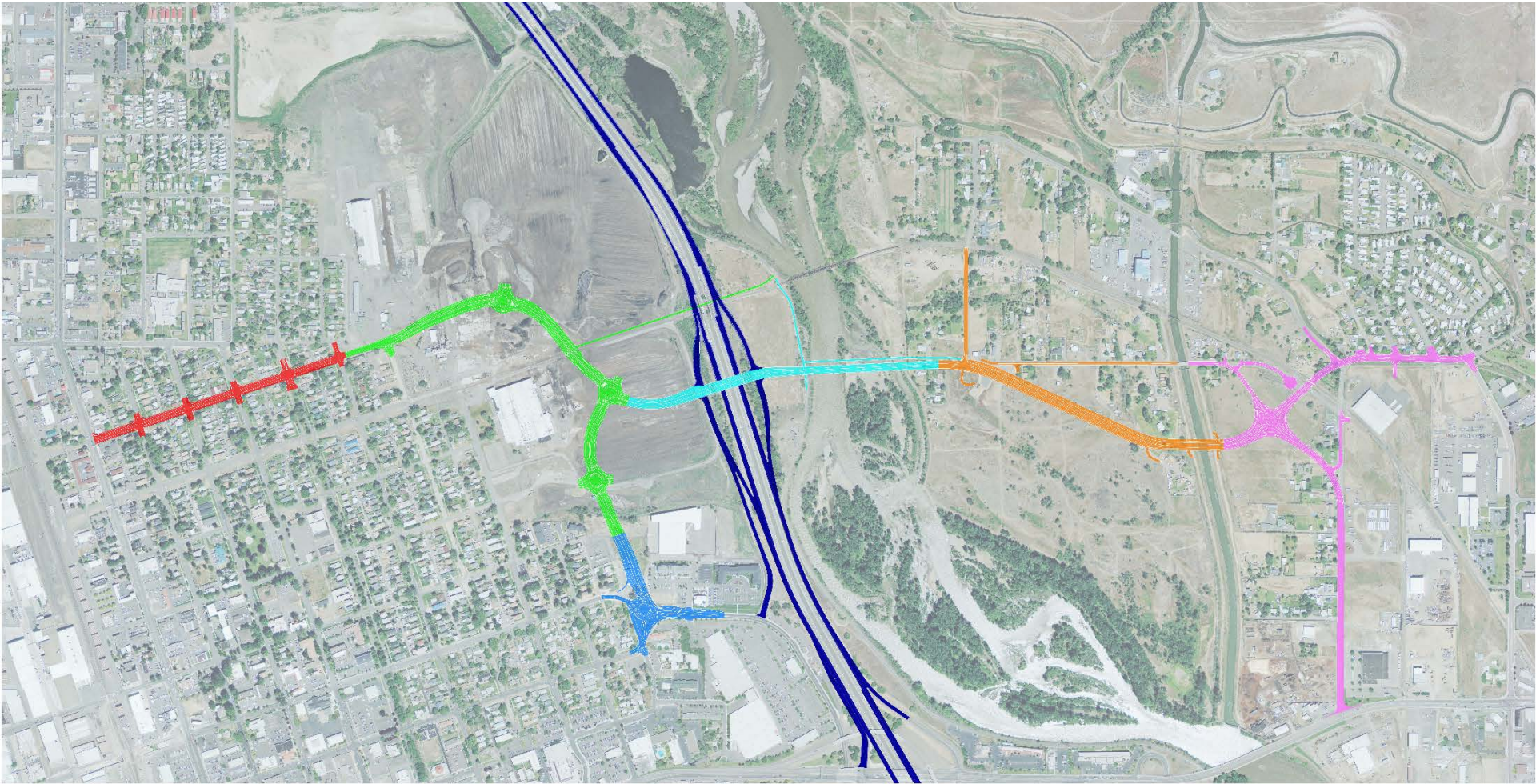


**LOCHNER**



**Huibregtse, Louman Associates, Inc.**  
CIVIL ENGINEERING • LAND SURVEYING • PLANNING

# All Project Phases



### CITY PHASES

2019

2021

COMPLETED

### COUNTY PHASES

2021

2020

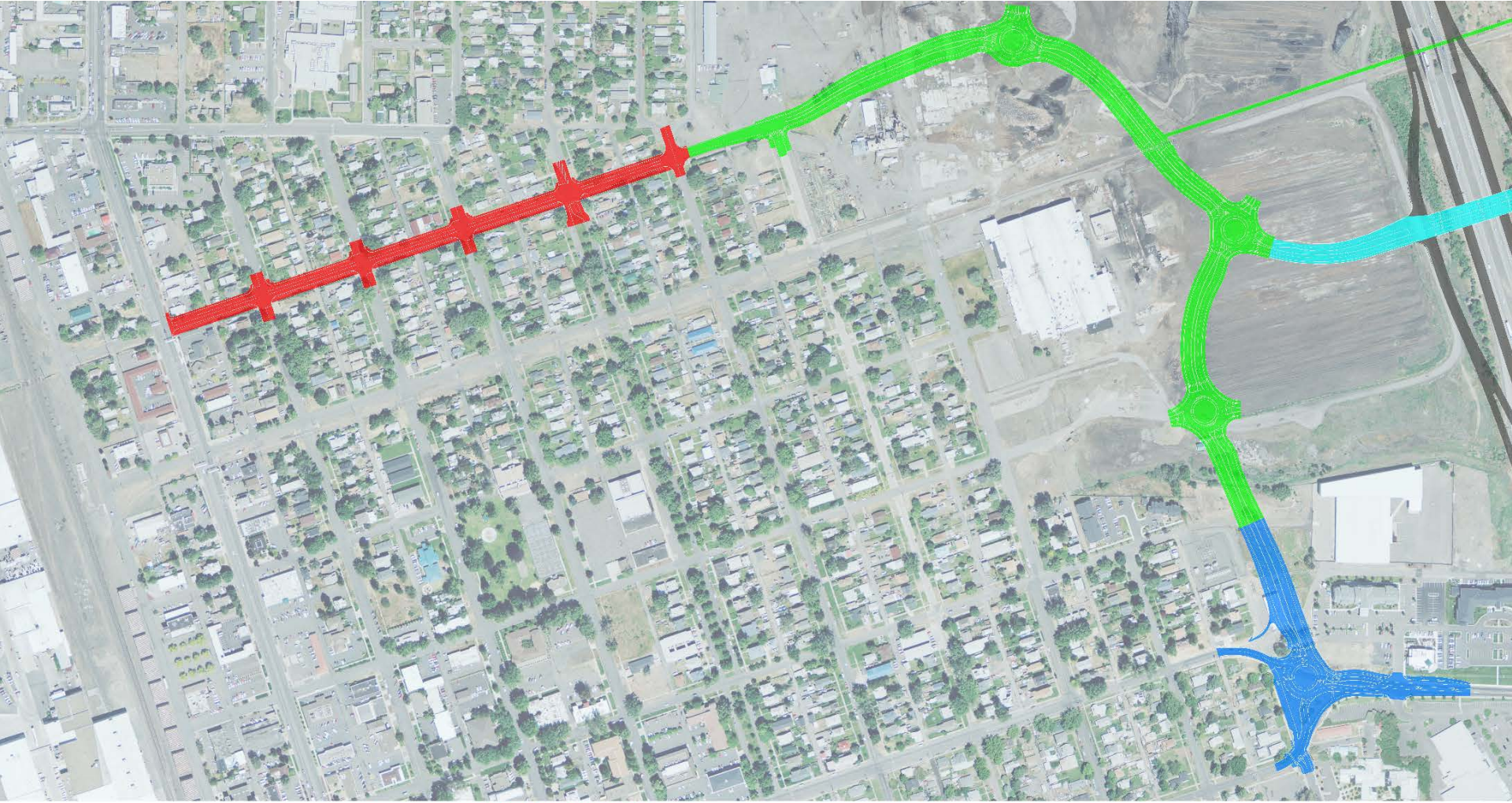
2019

### WSDOT PROJECT

2024



# City Phases



## CITY PHASES

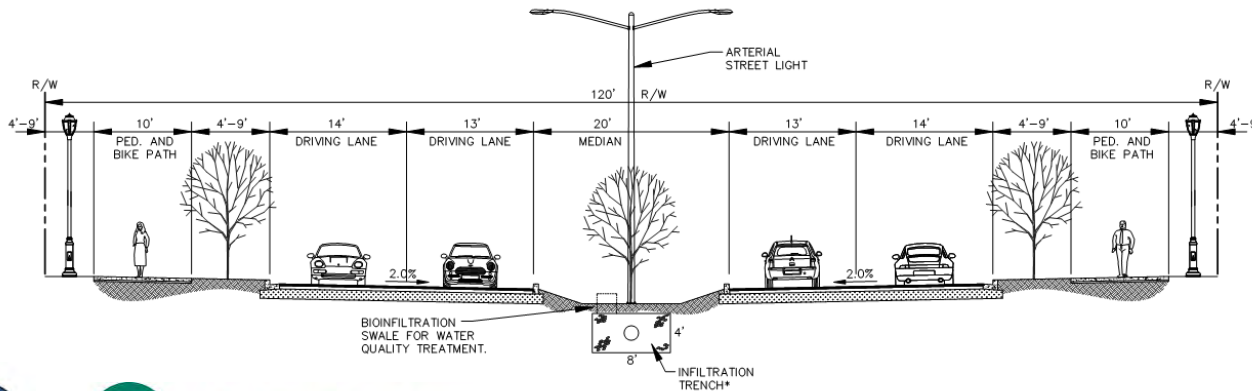
2019

2021

COMPLETED



# Bravo Company Boulevard



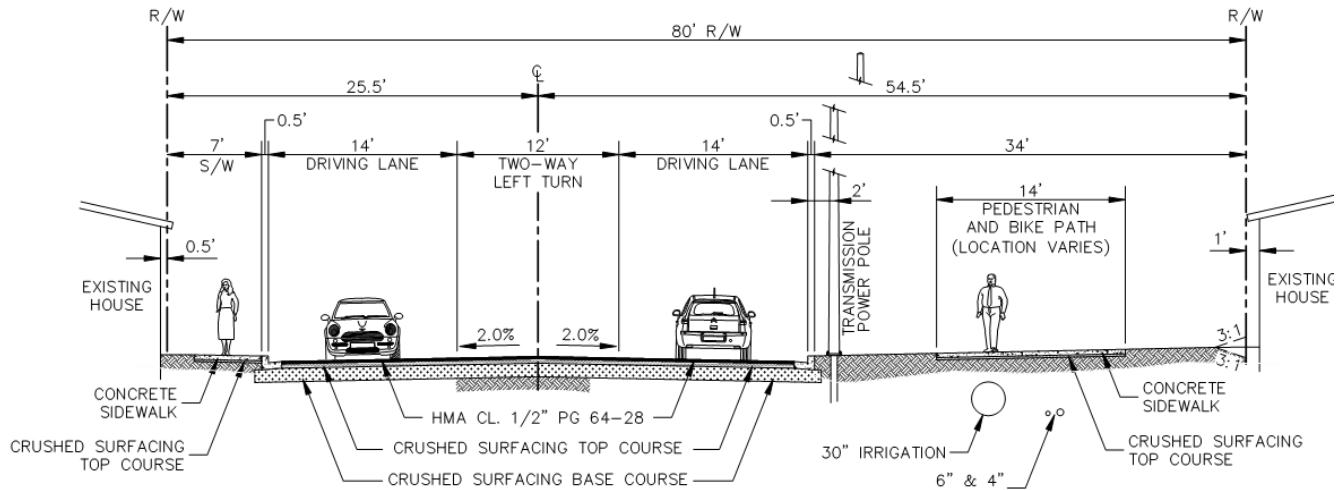
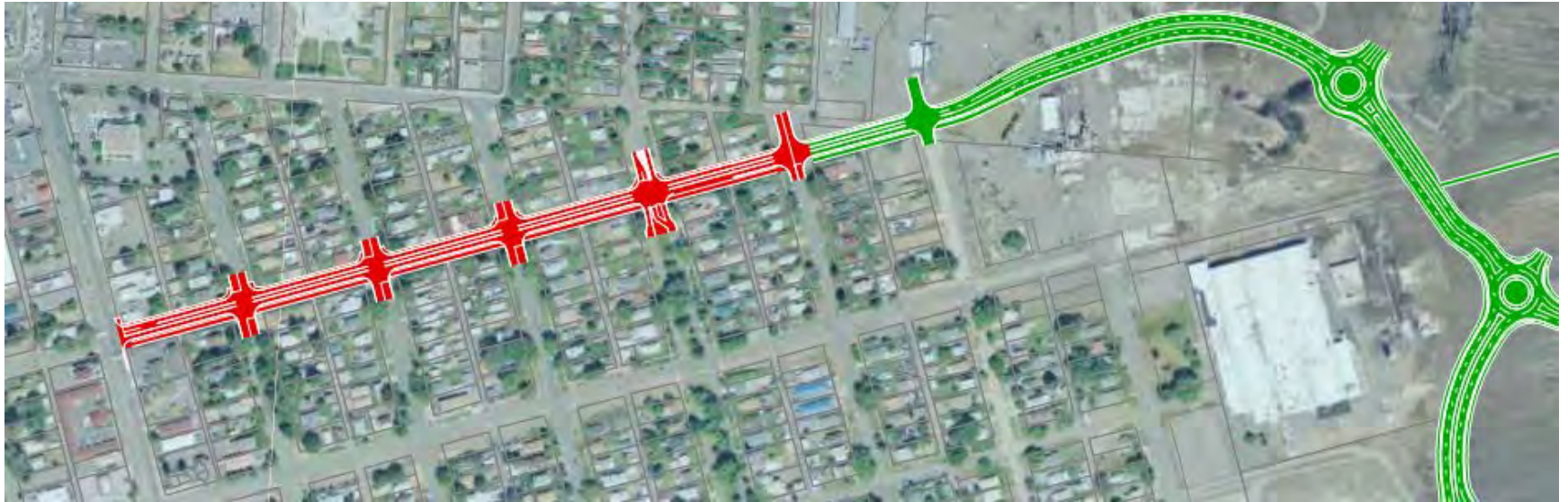
**LOCHNER**



**Huibregtse, Louman Associates, Inc.**  
CIVIL ENGINEERING • LAND SURVEYING • PLANNING



# H-Street

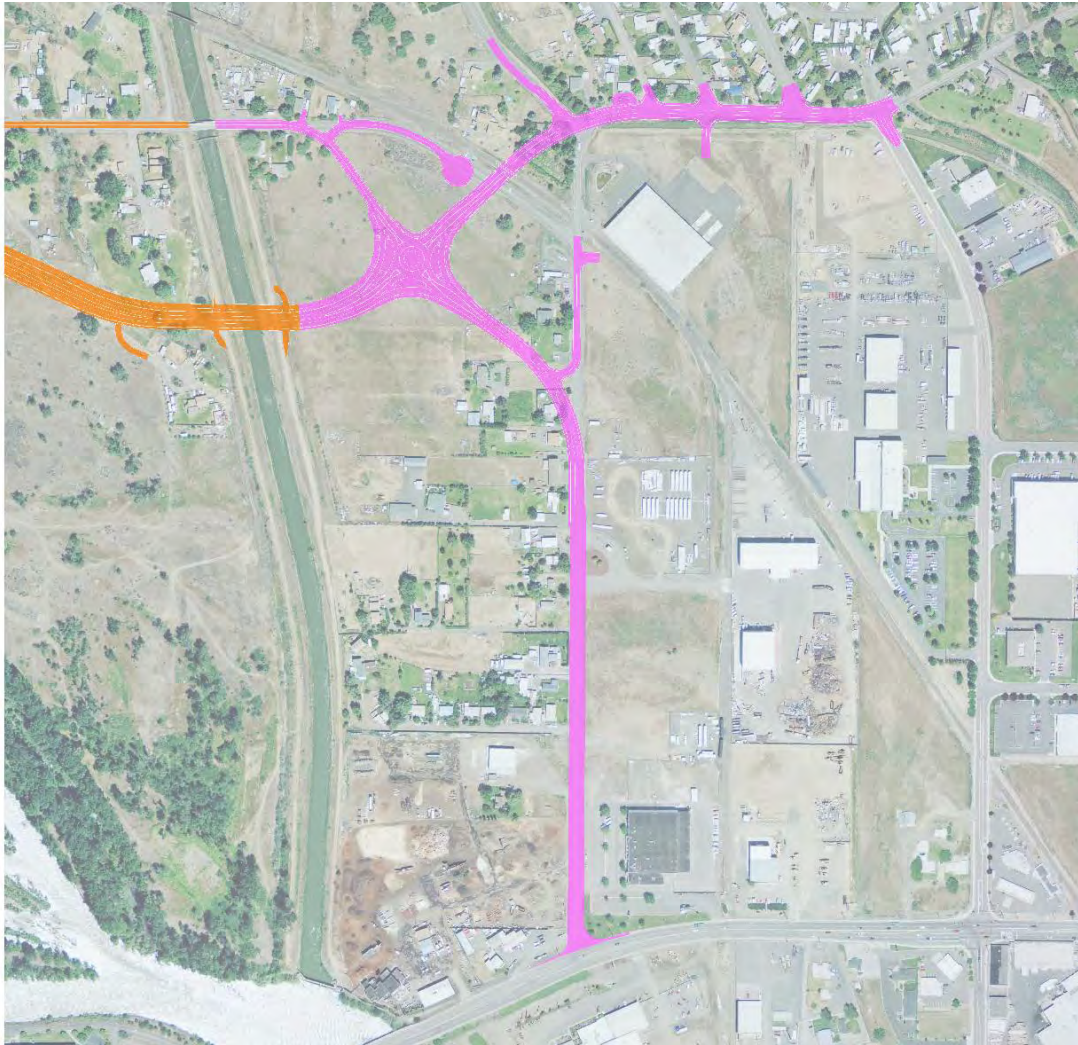


**LOCHNER**



**Huibregtse, Louman Associates, Inc.**  
CIVIL ENGINEERING • LAND SURVEYING • PLANNING

# Yakima County Phase 1

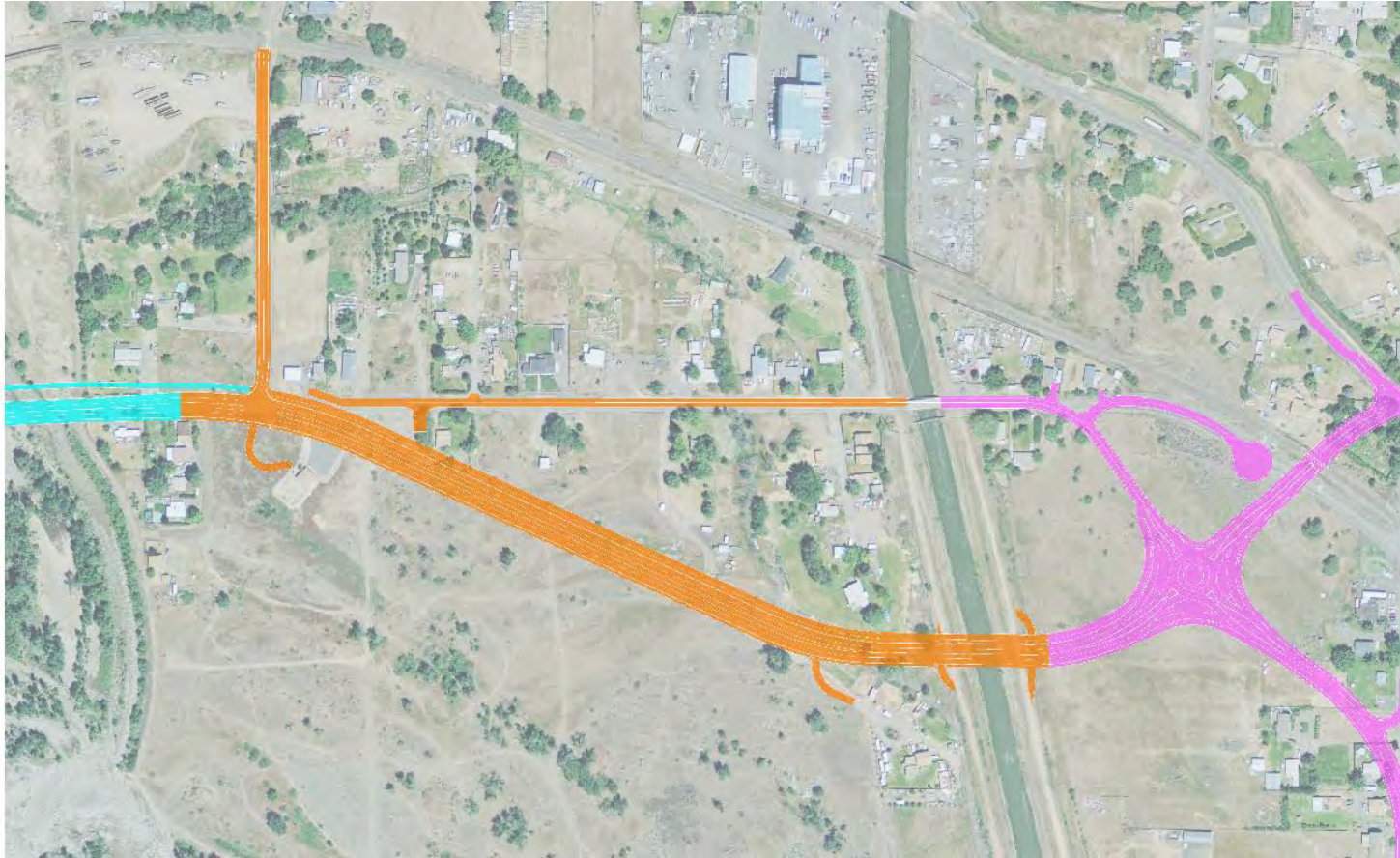


COUNTY PHASE 1

2019



# Yakima County Phase 2



COUNTY PHASE 2

2020



# Yakima County Phase 3

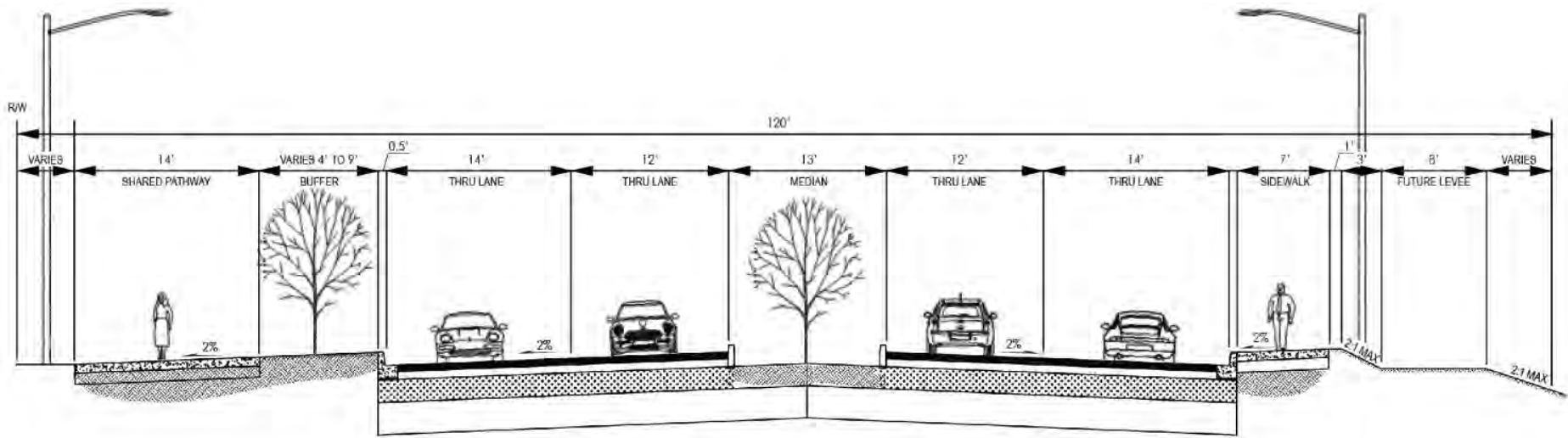


COUNTY PHASE 3

2021



# East-West Corridor

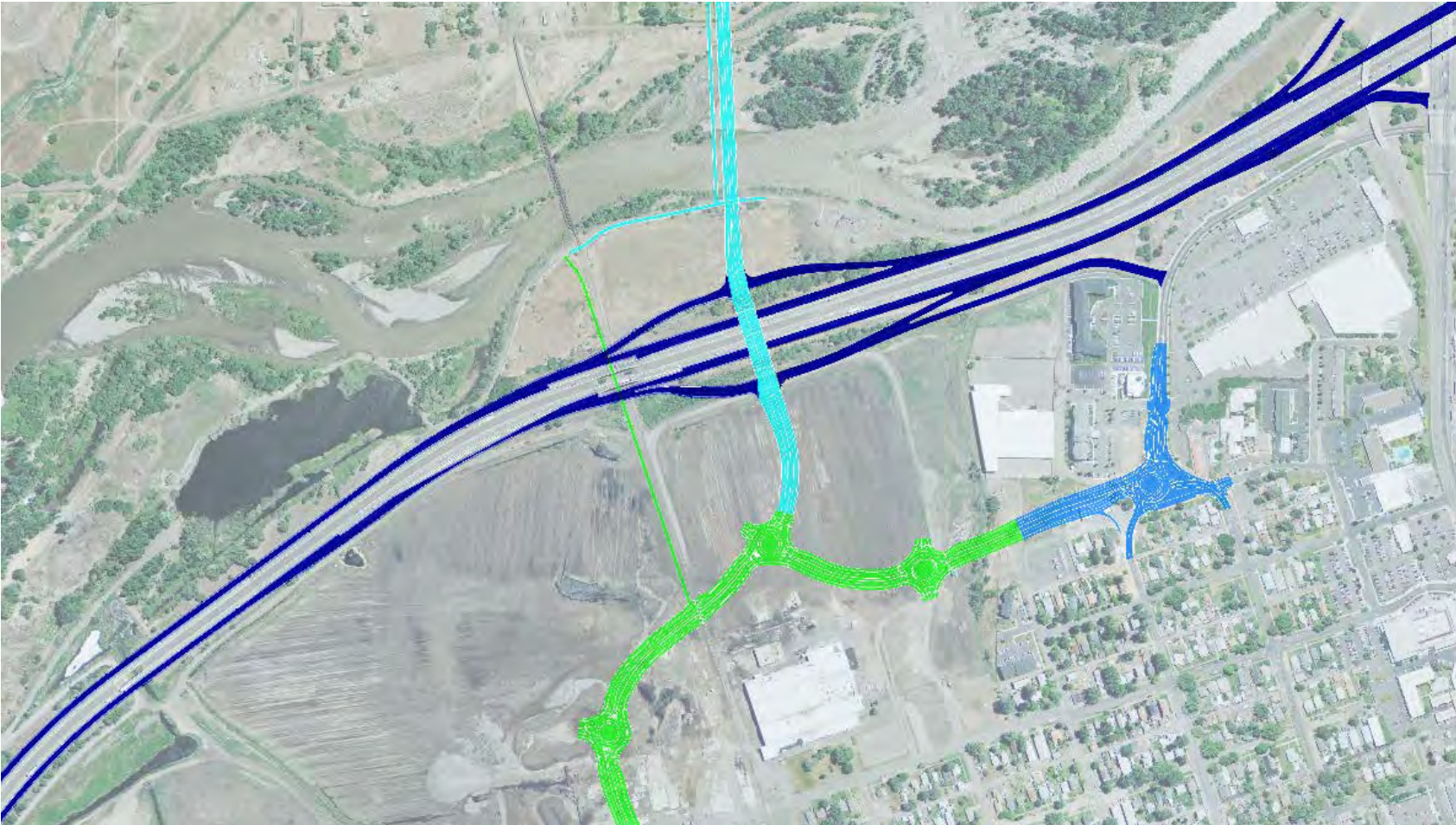


**LOCHNER**



**Huibregtse, Louman Associates, Inc.**  
CIVIL ENGINEERING • LAND SURVEYING • PLANNING

# WSDOT I-82 Corridor Improvements



WSDOT PROJECT

2024



# Greenway Improvements



**LOCHNER**



**Huibregtse, Louman Associates, Inc.**  
CIVIL ENGINEERING • LAND SURVEYING • PLANNING

# Schedule & Funding

Construction Stage	Beginning Construction	Preliminary Est. of Probable Cost
Fair Avenue Roundabout (City Project)	Complete	\$ 2,355,000
Butterfield to Rosa Canal (County Project)	2019	\$ 6,983,300
Bravo Company Blvd. (City Project)	2019	\$ 18,386,000
Rosa Canal to 15 <sup>th</sup> (County Project)	2020	\$ 10,855,100
H-Street (City Project)	2021	\$ 4,694,000
15 <sup>th</sup> to Bravo Company (Bridges, County Project)	2021	\$ 57,538,400
I-82 Corridor Improvements (WSDOT)	2024	\$64,413,000
<b>TOTAL</b>		<b>\$165,224,800</b>



**LOCHNER**



**Huibregtse, Louman Associates, Inc.**  
CIVIL ENGINEERING • LAND SURVEYING • PLANNING



# Next Steps

## City of Yakima

- Enter into Agreed Order with the Department of Ecology
- Acquire Right of Way for Bravo Company Boulevard extension
- Obtain Railroad Crossing Permit from BNSF
- Secure Funding and Complete Design of the H Street Improvements

## Yakima County

- Pursuing TIB Funding for county's Phase 1 project
- Pursuing Washington State Recreation and Conservation grant funding for the pedestrian bridge over the Yakima River.

## WSDOT

- Continue scoping and preliminary environmental work for I-82 improvements



**LOCHNER**



**Huibregtse, Louman Associates, Inc.**  
CIVIL ENGINEERING • LAND SURVEYING • PLANNING

QUESTIONS?