



## Washington State Transportation Commission-Kitsap County

WASHINGTON STATE DEPARTMENT OF TRANSPORTATION

JOHN WYNANDS, P.E., REGION ADMINISTRATOR

June 19, 2019

# Olympic Region



## 7 counties: Clallam, Jefferson, Grays Harbor, Thurston, Kitsap, Mason, Pierce

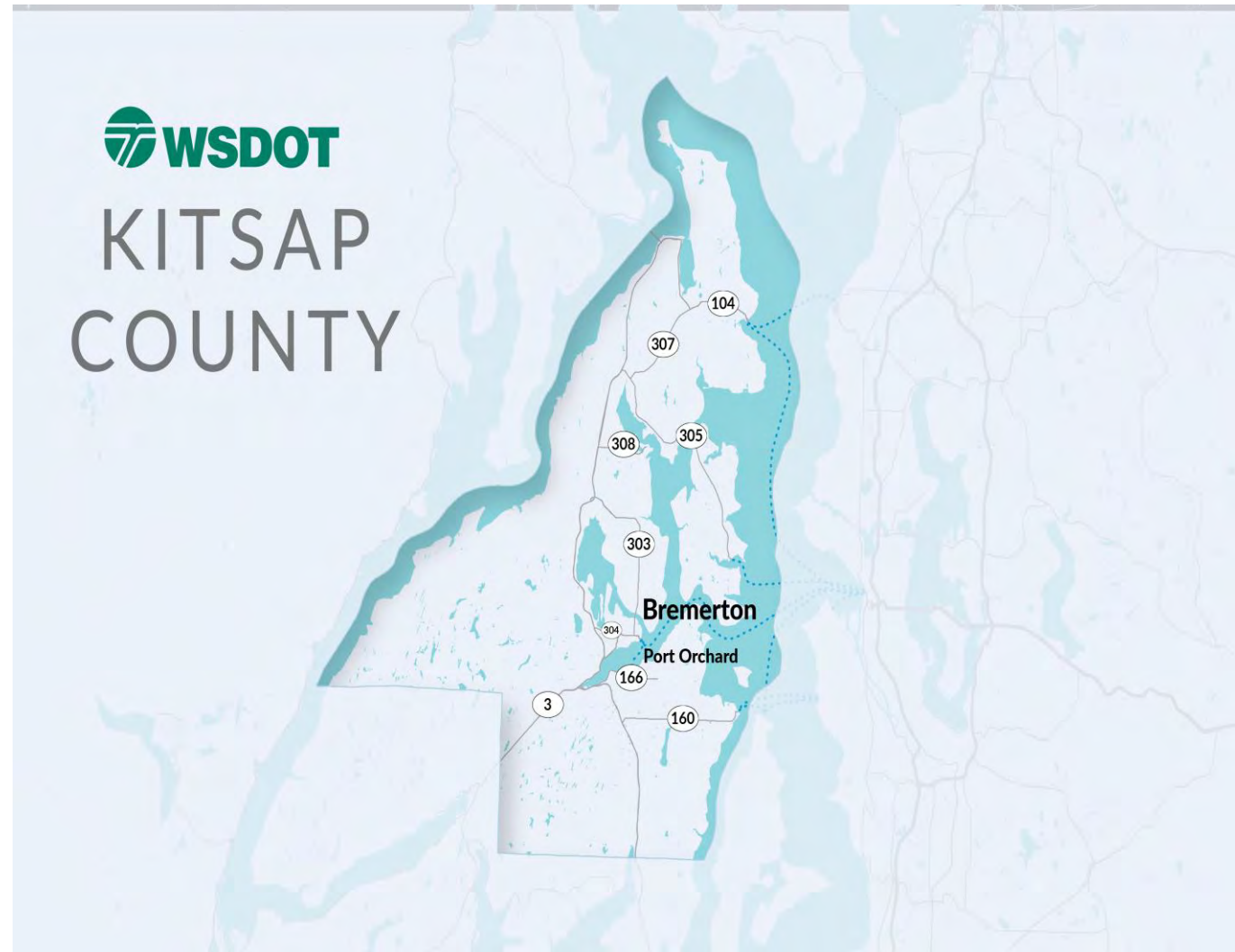
- Olympic Region
  - 1 of 6
- 674 employees
  - 4 maintenance areas
  - 7 project offices
- Responsible for:
  - Construction
  - Maintenance
  - Preservation
  - Design
  - Planning
- 2,900 lane miles
- 645 bridges
- 309 signals
- 4 safety rest areas



# WSDOT in Kitsap County



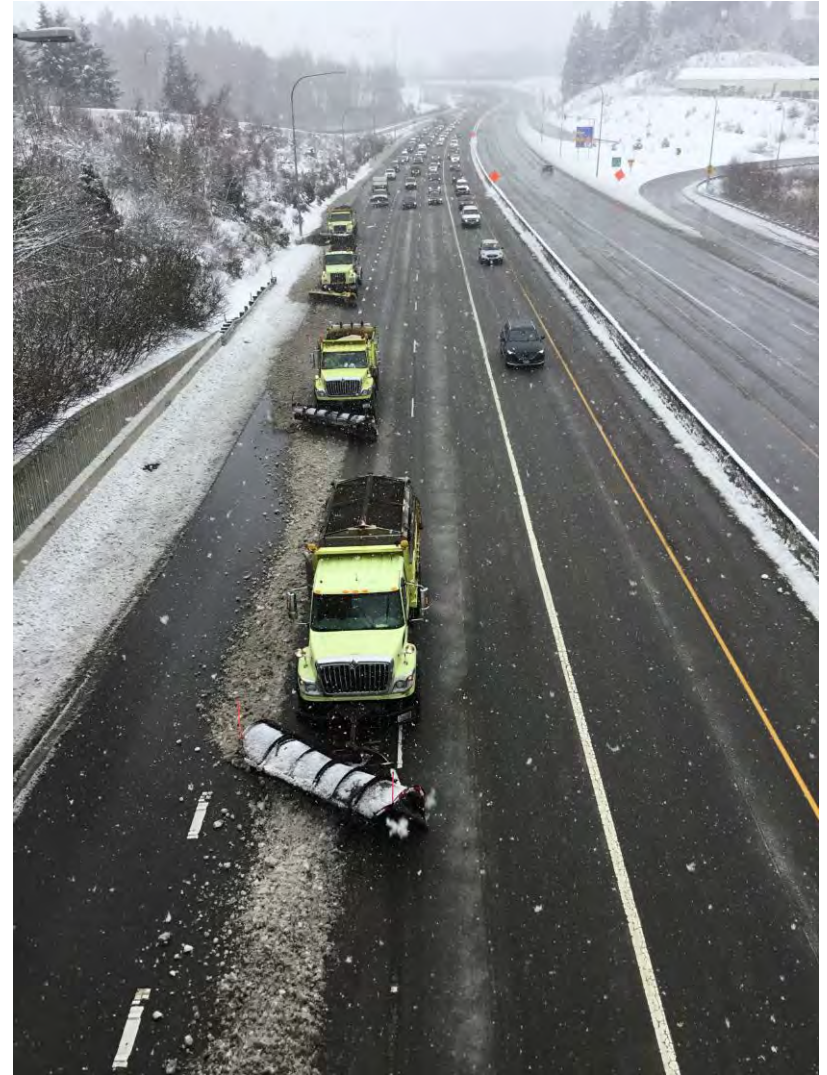
- Area 2 Offices
- PE Office
- 376.5 lane miles
- 138 bridges
- 59 signals
- 4 WSF terminals



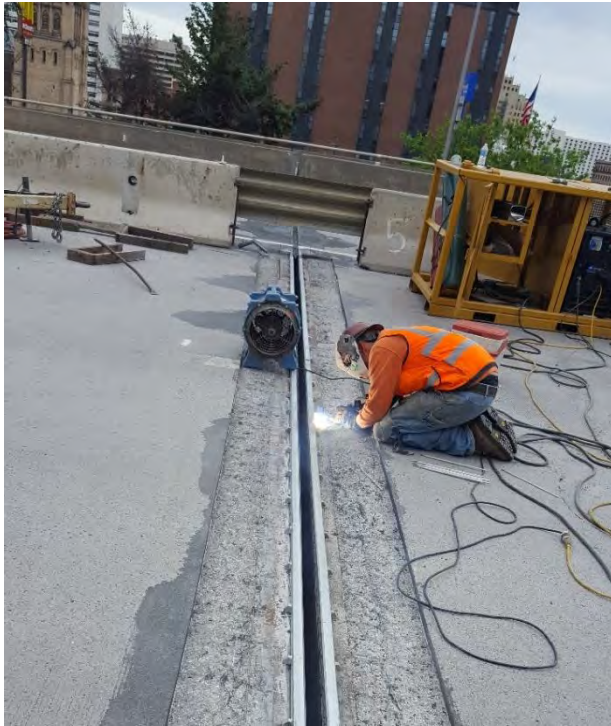
# Winter Operations 2019



# Winter Operations 2019



# Fix what we have - keep it in good working order



- State of Good Repair –
  - Maintain our state's infrastructure
  - Keep value of the original investment
  - Fix it now, or pay lots more later

# Asset Management – All WSDOT



(Millions of dollars)	Replacement Value	10-year Average Spending	10-year Future Annual Avg. Spending	10-year Annual Additional Needs	10-year Budget, Plus Needs Annual Avg.
Highways	\$109,390	\$330	\$335	\$330	\$665
Multimodal (i.e. Aviation, Public Transportation, Rail)	\$600	\$15	\$20	\$90	\$110
Intra-Agency (i.e. IT, Facilities, Fleet, Real Estate)	\$66,480	\$55	\$70	\$55	\$125
Ferries	\$4,940	\$110	\$125	\$215	\$340
<b>TOTAL</b>	<b>\$181,410</b>	<b>\$510</b>	<b>\$550</b>	<b>\$690</b>	<b>\$1,240</b>

# State of Good Repair



## Programmatic responses

- Pavement
- Structures
- Drainage systems
- Intelligent Transportation Systems (ITS)
- Unstable Slopes
- Facilities
- Fleet





# State of Good Repair

## Right-of-way management

- Vegetation
- Trash
- Encampments
- Rest areas



# Region Bridge Network



# SR 305 Agate Pass Bridge Painting – Bridge Preservation



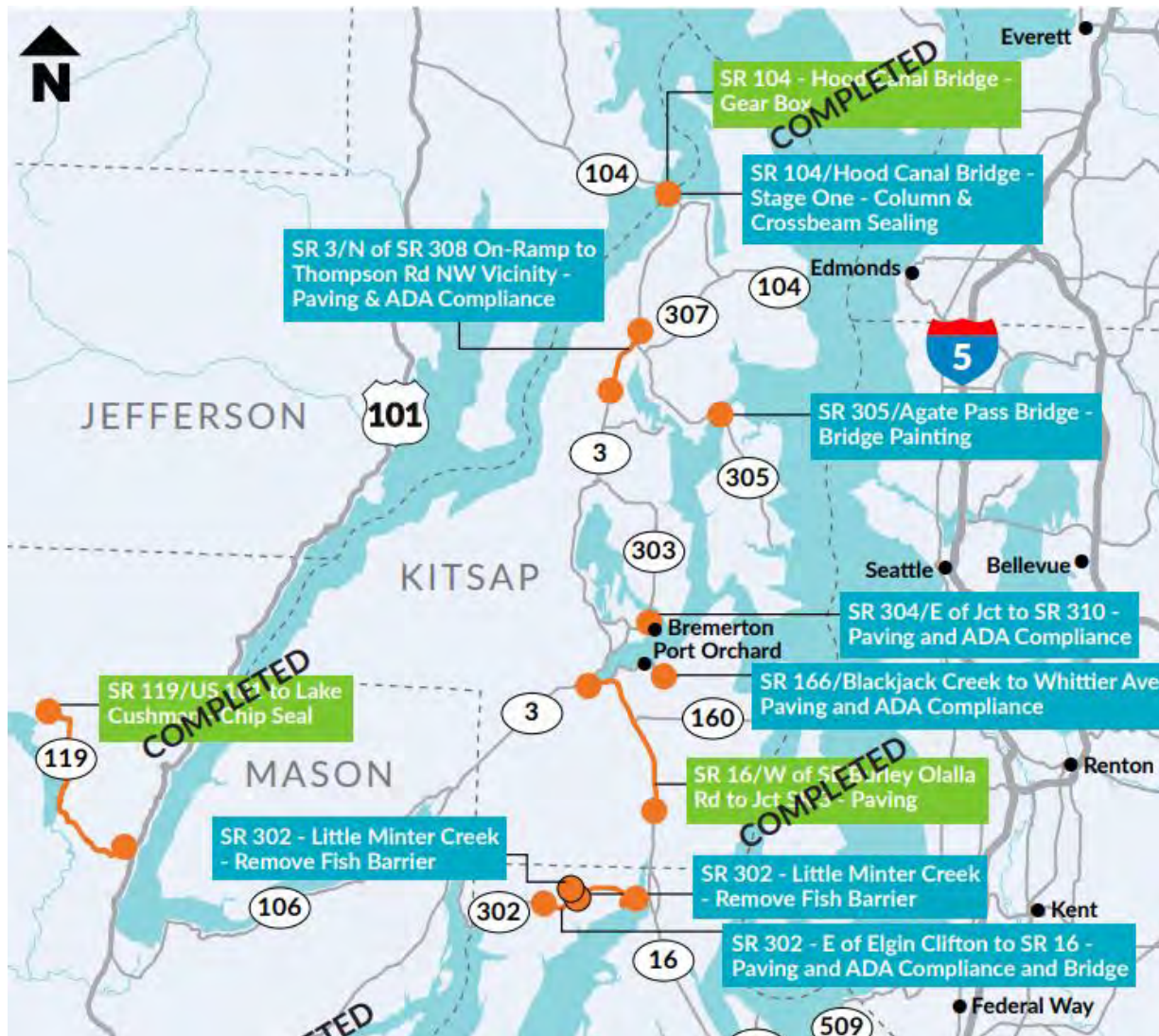
# Caring for aging spans



# Caring for aging spans

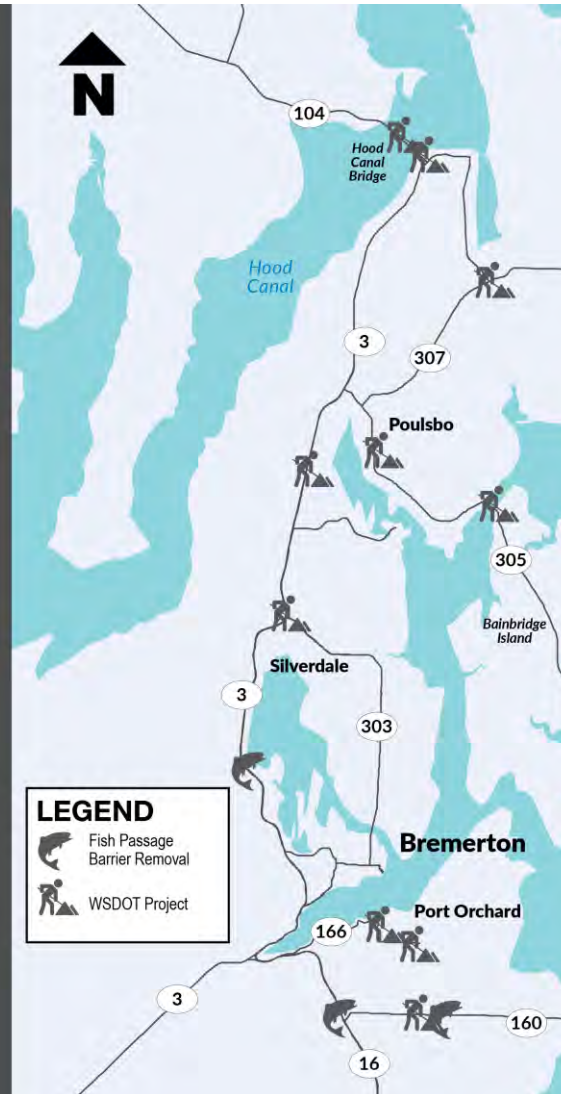


# 2018/2019 Projects:



# Future plans

## WSDOT planned construction Kitsap County 2020-2026

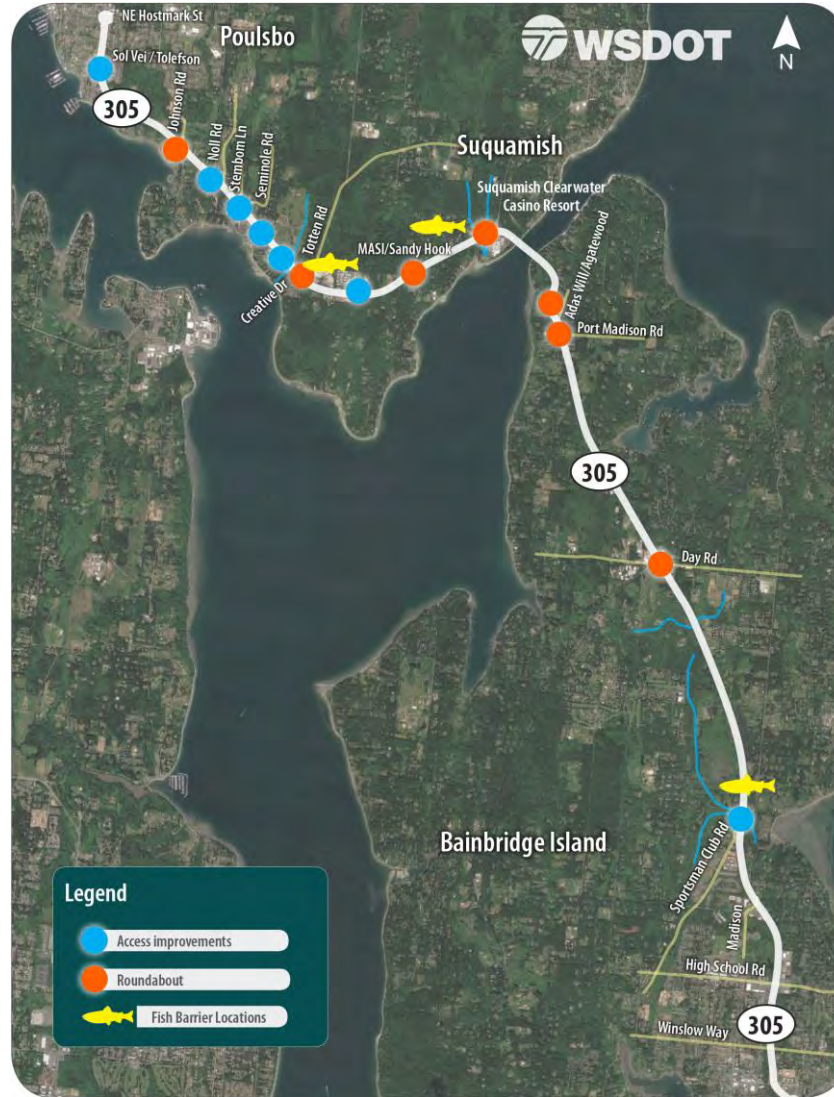


# Paving/ADA upgrades





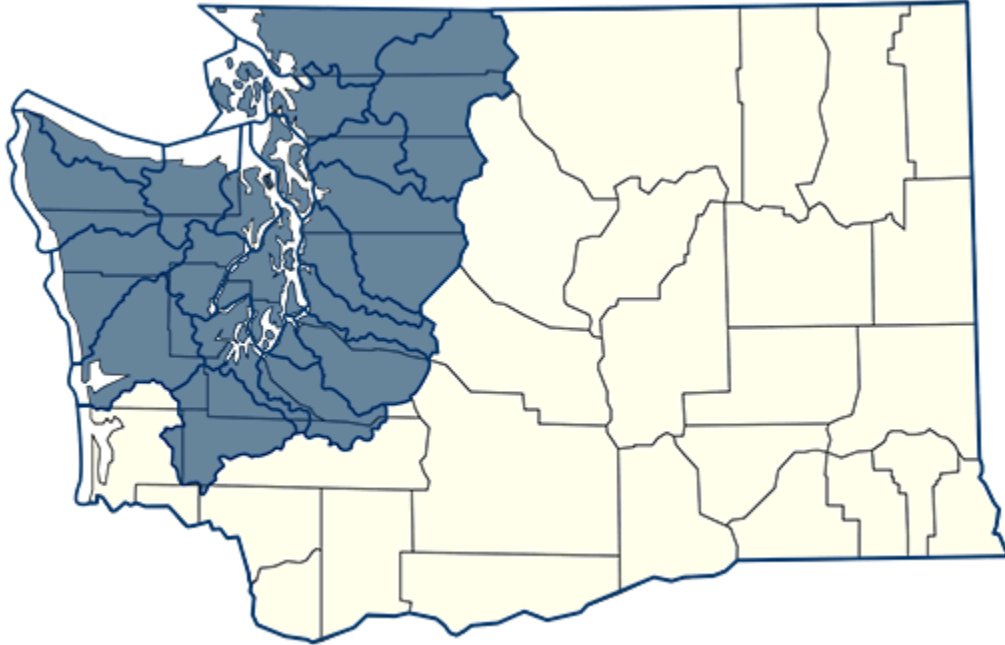
# SR 305 Safety and Mobility Improvements



# Future plans – SR 305 Safety and Mobility Improvements



# Improving fish passage

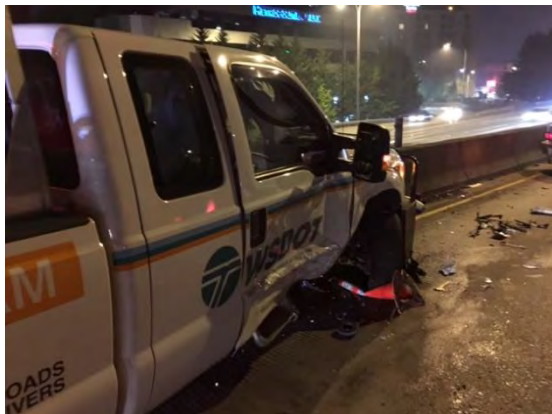


# Improving fish passage



# SR 3-Chico Creek-Fish Barrier Removal





## Target Zero – Washington’s Strategic Highway Safety Plan

Priorities across multiple categories:

- Crash type
- Road users – young drivers, motorcycles, pedestrians
- High-risk behavior – impairment, speeding, distraction
- Decision – traffic data systems, EMS and Trauma response
- Other – wildlife, work zone, train, school bus



# Stark reminder of need for work zone safety



# Stark reminder of need for work zone safety





# Thank you! Questions?



[wsdot.wa.gov/regions/olympic](https://wsdot.wa.gov/regions/olympic)  
360-357-2659  
[wynandj@wsdot.wa.gov](mailto:wynandj@wsdot.wa.gov)