



Transportation Commission Meeting

June 18, 2019



Bremerton Background

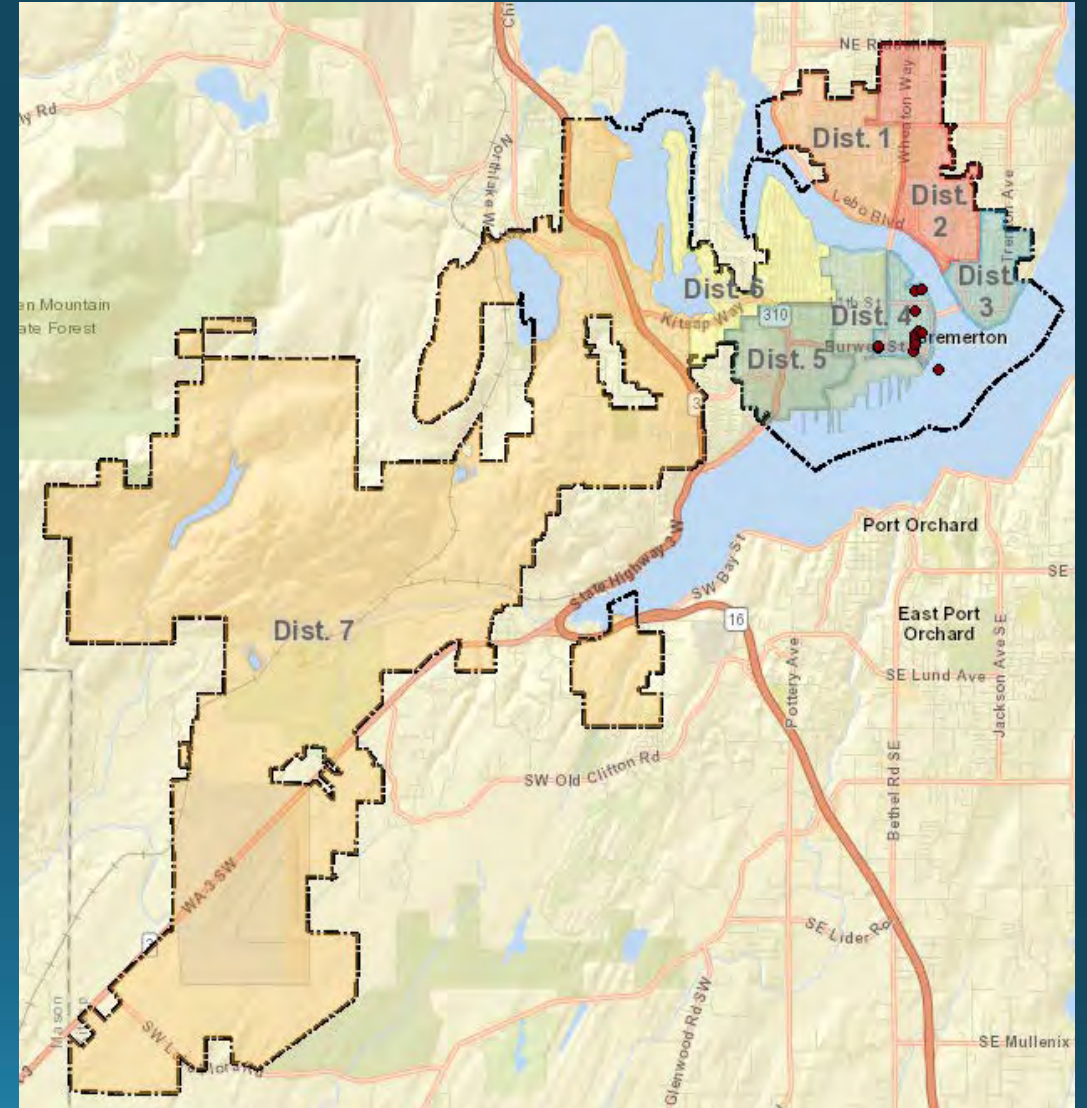
Population 41,235, largest City on Kitsap Peninsula

15-miles west of Seattle; 1-hr vehicle ferry & ½-hour fast ferry!

Home of Naval Base Kitsap-Bremerton and the Puget Sound Naval Shipyard; homeport to 2 carriers

Olympic College - Bremerton Campus; enrollment is 12,500. 12 BA degrees, affiliated with UW, WSU & WWU

Demographics: 18.1% live in poverty (twice county, 50% higher than state); 15.6% under age 65 are disabled (nearly twice state, 50% higher than county)



Navy Influence on Bremerton

NBK-Bremerton employs 23,000 including Military, Civilian & contractors. About 60% release during the peak hour.

Traffic impacts; primarily during the peak hour

Sidewalks – critical given 12,000 walk into the Naval Base daily (2015 data)

Parking deficit; 12,000 walk into the base daily, 6,000 through 3-east pedestrian gates during peak hour



Navy Influence on State

NBK "Total Economic Impact" on State was \$4.0B in 2017

The Navy is an Economic Engine for the State; however, it pays no taxes to mitigate impacts, and no grant programs exist to specifically address impacts from the Military

City pursuing an NBK-Bremerton commuter study to quantify issues and needs. Will need implementation funding



New Burwell Tunnel Entrance – partially funded by \$1.3M State Commerce Grant

SR303 Redevelopment

\$450K State appropriation - corridor study underway:

- Burwell to McWilliams; Practical Solutions approach
- Urban arterial corridor constructed configured as limited access in areas
- Typical gap in ped crossing opportunities is 1/2-mile. 9/10-mile at bridge (16th to Sheridan.)
- Large sections with essentially no pedestrian facilities
- Study completion in mid-2020; will need implementation funds



SR303 – Warren Avenue Bridge

The problem - 1950's vehicle focused design:

- 1/3-mile long bridge; sidewalks less than 4-ft; 3.5-ft at entrance
- Wheelchairs and strollers can't pass - people observed climbing on handrails to pass wheelchairs
- AADT is 43,000. No bike lanes. Posted speed is 35-mph; vehicle speeds exceed 45-mph

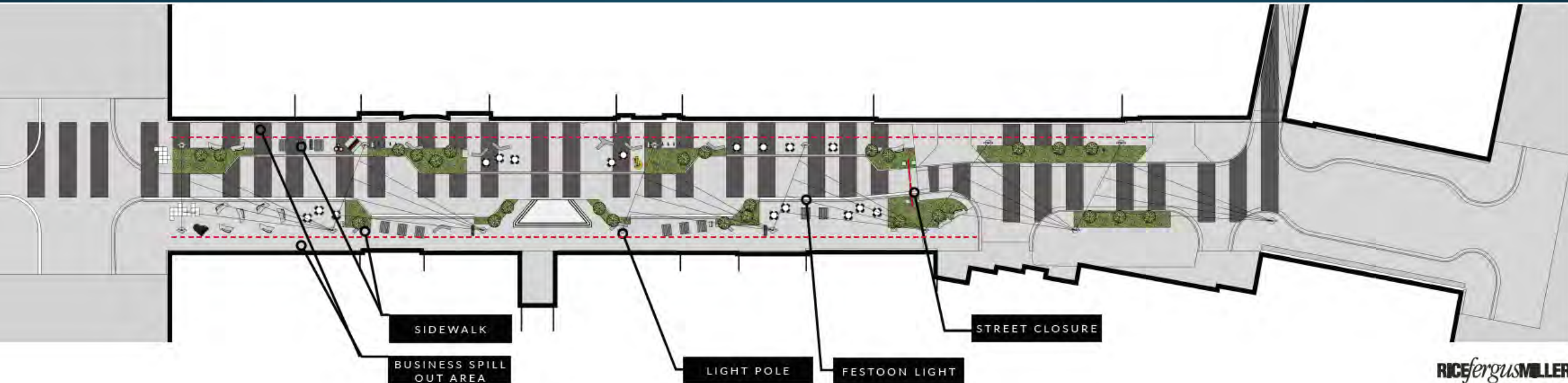
The solution – ADA compliant upgrade:

- Completed feasibility study/predesign in 2016 with WSDOT
- Received \$1.5M grant to design Bridge and approaches – coordinating with WSDOT; request they lead design
- Will need construction funding



Quincy Square

- Music themed public space inspired by Quincy Jones
- Downtown revitalization project
- 1 block reconstruction into a Festival Street
- Amenities that encourage people to “stay and play”
- Half-block event closures
- Curbless design



Quincy Square

Urban revitalization - housing-based, day-to-night urban center with focused arts, entertainment, and evening-centric retail.



Questions

