

City of Bainbridge Island: Transportation Issues, Challenges and Successes



CITY OF
BAINBRIDGE ISLAND

Local Roads Maintenance

- ▶ City has over 140 miles of paved roads
- ▶ Consistent City investments has produced upward trend in road condition
 - ▶ Recent PCI score of 69 continues positive trend
 - ▶ 14% of our road segments scored as "excellent" - PCI higher than 85. Our goal for this measure is 15% or higher, so we are very close to an important benchmark.
- ▶ Alternating years of grind outs followed by chip seals
- ▶ Transportation Benefit District Funding critical source of funds for this program
 - ▶ In jeopardy with upcoming ballot initiative



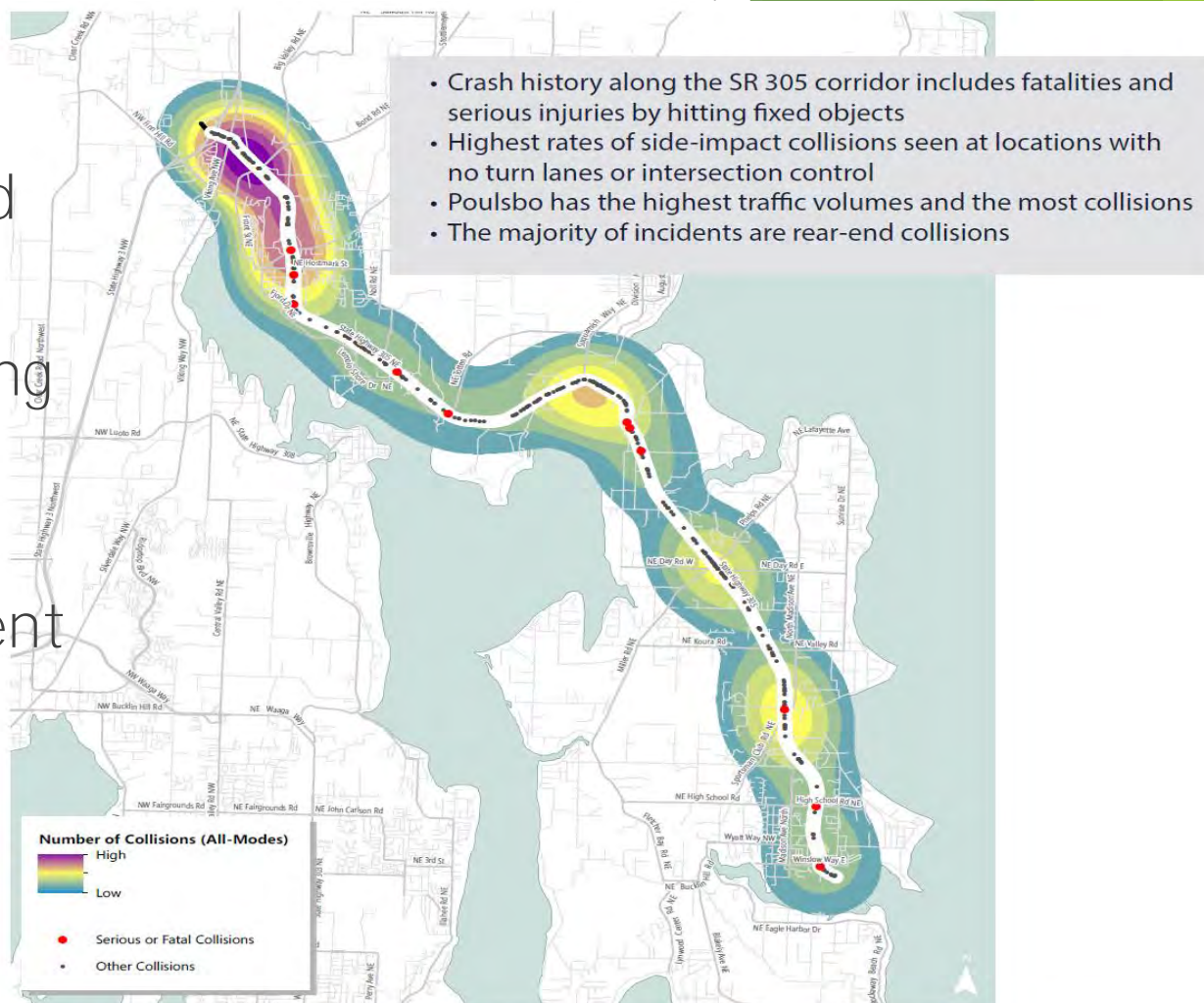
Positive Partnership with WSDOT - Olympic Drive Project

- ▶ City-sponsored project in State ROW (SR305)
- ▶ Innovative non-motorized improvements
 - ▶ Experimental left-turn bikelane
 - ▶ Bike boxes on State highway
 - ▶ FHWA approvals
- ▶ Three Grant sources (~ \$2M)
 - ▶ State Bicycle-Pedestrian Program
 - ▶ Transportation Improvement Board (TIB)
 - ▶ Transportation Alternative Program (TAP)



SR305 Improvements

- ▶ Significant Safety Concerns on North End of Island
- ▶ Success in *Connecting Washington* funding (\$36.8M)
- ▶ Concern about adequacy of funding as estimates rise during project development



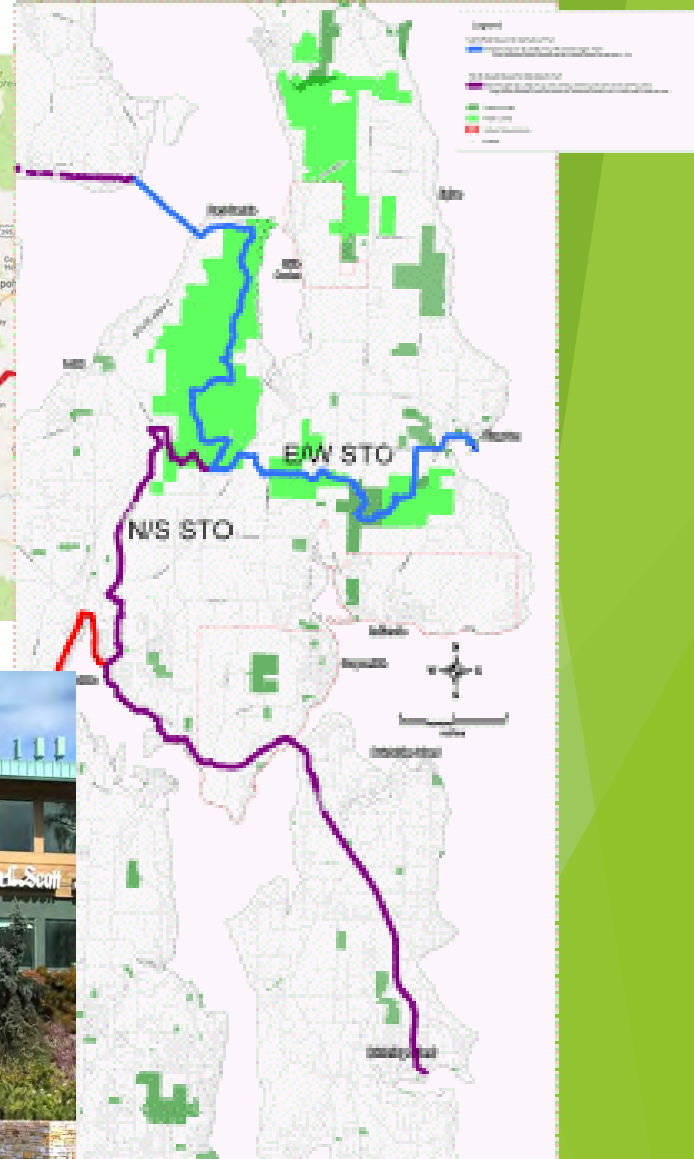
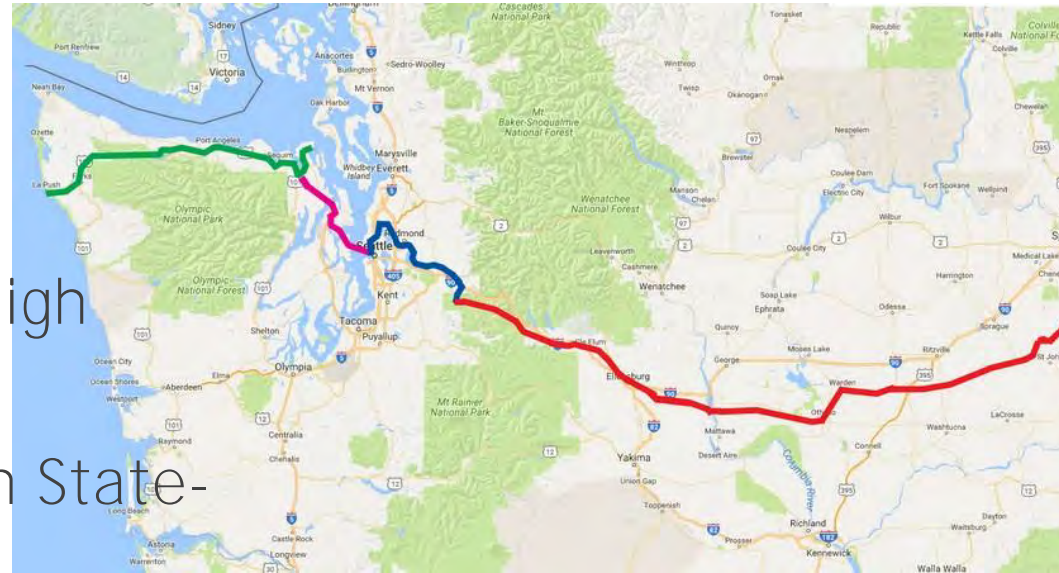
SR 305 Collisions (January 2012 through December 2016)

Agate Pass Bridge Replacement

- ▶ Functionally Obsolete bridge - 1950 construction
- ▶ Only over-land link to Island
- ▶ Preliminary replacement study completed with *Connecting Washington* funding
- ▶ Long-term funding strategy in question



Regional Trails



- ▶ Bicycle Planning has high importance on Island
- ▶ Island is critical link in State-wide trail network
- ▶ City-sponsored project completed first segment on SR305 from Ferry Terminal
- ▶ Uncertain funding sources for future segments



Questions?



CITY OF
BAINBRIDGE ISLAND