

# Successes and Challenges

## **South King County**

Lorena Eng, Northwest Region Administrator

Washington State Transportation Commission Meeting  
July 25, 2017

# Topics

- Successes and Challenges
  - Safety
  - Preservation Program
  - Managed Lanes Projects
  - Connecting Washington Funded Projects
  - Fish Barrier Removal Program
  - Challenges

# Safety

- 2016 Legislature called for a safety performance study
- SR 169 Safety Study submitted to the Legislature in December 2016
- Identified safety enhancements to be implemented later this year include:
  - Replace and install improved warning signs, guide signs and guideposts throughout the corridor
  - Install advanced warning and striping for the southbound SR 169 lane reduction to the SE Jones Rd/196<sup>th</sup> Ave SE intersection
  - Revise striping and channelization to improve sightlines for traffic turning from SE 288<sup>th</sup> St to SR 169
- Evaluation of other safety enhancements is underway

Locations and strategies identified in the SR 169 safety study



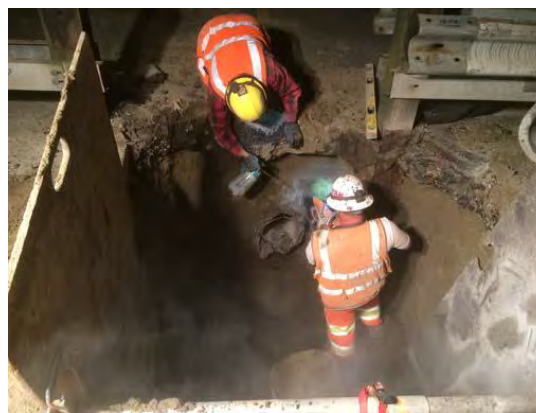
# Preservation

- I-5 Northbound S 260<sup>th</sup> to Duwamish River Bridge – Concrete Pavement Rehab. The \$31 million project currently underway will:
  - Replace 440 broken concrete panels
  - Repave 4 miles of all lanes of concrete roadway with asphalt after “cracking” the concrete.
  - Remove ruts and bumps by grinding remaining concrete pavement.
  - Replace eight expansion joints on the Interurban Avenue and Duwamish River bridges.
  - Rehabilitate the Interurban Avenue and Duwamish River bridge decks.
  - Work is done at night and weekends, 5 more weekends to complete by 2018



# Preservation

- Preservation Projects
  - SR 509 – S 168<sup>th</sup> to S 112<sup>th</sup> St Vicinity – Paving, ADA, & Barrier Replacement in Burien. The \$4.6 million project will:
    - Grind and repave the “Burien Freeway” with asphalt
    - Improve drainage in the median
    - Replace guardrail with concrete barrier
    - Bring 4 pedestrian curb ramps in compliance with ADA
    - 4 weekend lane closures for paving later this summer



# Managed Lanes

- I-405/SR 167 Corridor
  - SR 167 HOT Lanes 9 mile extension southbound was operationally complete December 2016. The initial HOT lane segment in the north end of SR 167 was opened in 2008. \$83 million
  - SR 167/I-405 Direct Connector that will connect the managed lanes facilities is under construction and is expected to be complete mid-2019.
  - I-405 Renton to Bellevue Widening and Express Toll Lanes Project is under development with construction starting in 2019 and completion in 2024. \$1.22 billion including the Direct Connector project above.



# Connecting Washington



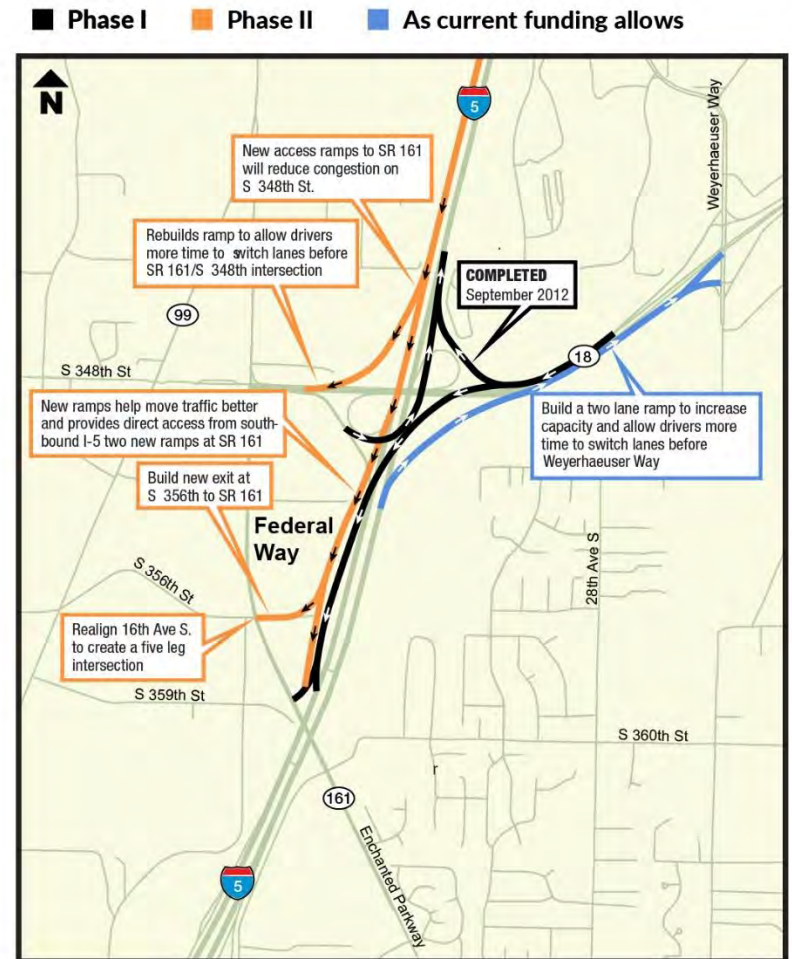
- Connecting Washington Funding in South King County
  - SR 518 Des Moines Interchange Improvement—construction contract has been awarded. \$15 million
  - SR 18/SR 164 East Auburn Access—working with the Muckleshoot Tribe and city of Auburn in developing project scope. \$15 million
  - I 90/SR 18 Interchange Improvements—funding of the \$150 million project was advanced by the 2017 Legislature to start this biennium.
  - I-5 Federal Way – Triangle Vicinity Improvements—project start 2021-23 biennium. Will use updated traffic modelling to finalize scope. \$85 million
- Mega Projects in South King County
  - I-405/SR 167 Corridor
  - SR 509/SR 167 Gateway Program
- Connecting Washington Funding for Local Projects in South King County
  - Covington Connector – extends 204<sup>th</sup> Ave SE from SR 516 to the SR 18/SE 256<sup>th</sup> Interchange. Makes improvements to the SR 18/256<sup>th</sup> St ramp terminal and SR 516/204<sup>th</sup> Ave SE intersections.
  - S 228<sup>th</sup> St & Union Pacific Grade Separation—reconstructs S 228<sup>th</sup> St as an overpass.





# Connecting Washington Triangle Project

- I-5/SR 18/SR 161 Federal Way – Triangle Vicinity Improvements
  - Original cloverleaf interchange opened to traffic in the 1960’s
  - Phase I was funded by Nickel and TPA and was completed in 2012
    - New flyover ramps were constructed to eliminate short weaving sections
  - 2012 Legislature directed preparation of environmental documentation for next phase
  - Connecting Washington funds \$85 million starting 2021
  - Using Practical Solutions and working with Gateway Project to ensure the projects compliment each other



JULY 2017

# Fish Barrier Removal Program

- 2013 federal injunction requires correcting 806 WSDOT-owned barriers by 2030
- Our 2013 general estimate for meeting the injunction is \$2.4 billion
- Have made progress by improving access to about 1,032 miles of potential habitat
- Working internally and externally with regulatory agencies to streamline processes and reduce costs

Before Photo



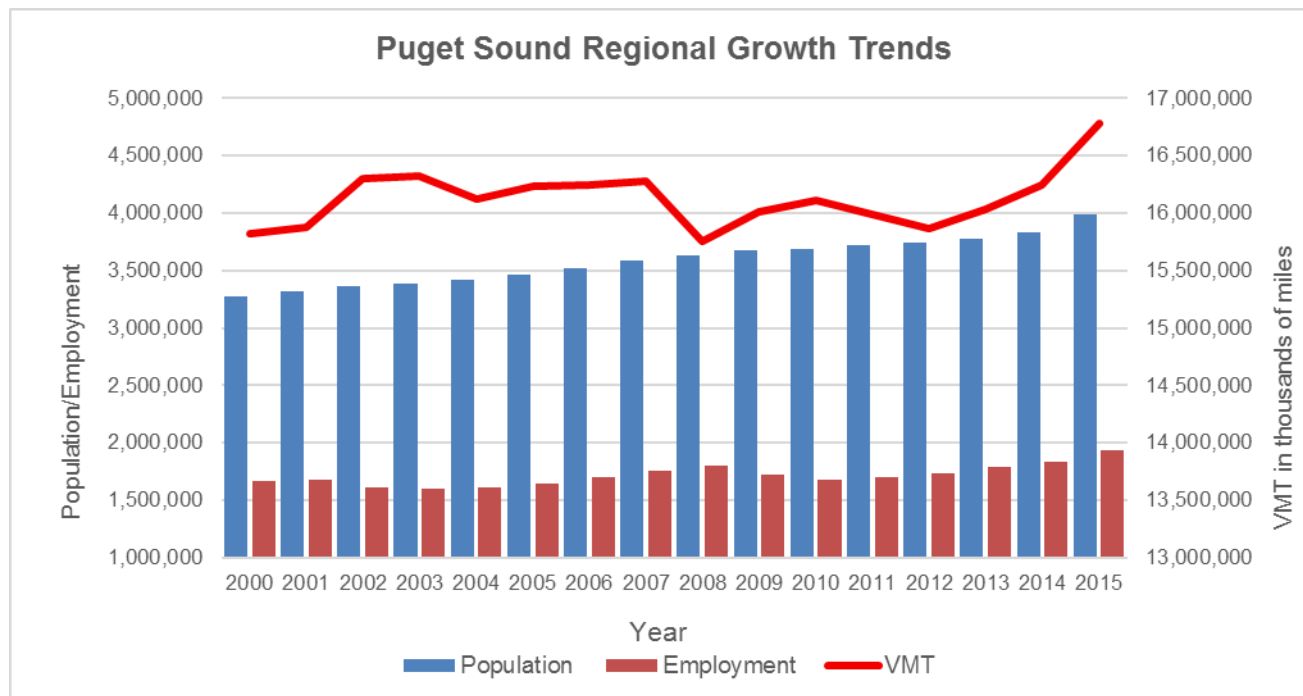
After Photo



SR 99 at West Fork Hylebos Creek near Tacoma where over 2 miles of upstream habitat was restored in 2015

# Growth Challenges in South King County/Puget Sound

- Unprecedented growth in population, employment and vehicle miles traveled has increased traffic congestion throughout our region.
- Responding to PSRC's request for a State Facilities Action Plan for Local Priority State Highways as part of their T2040 Plan Update efforts.



# Questions?

More Information:

[www.wsdot.wa.gov](http://www.wsdot.wa.gov)

Lorena Eng

Northwest Region Administrator

[engl@wsdot.wa.gov](mailto:engl@wsdot.wa.gov)

206-440-4706