



Kent Improvements

July 25, 2017

 **SOUNDTRANSIT**

Representative project scope

Kent Station Access Improvements:

Increase access for all riders to the Sounder stations.

Potential strategies include:

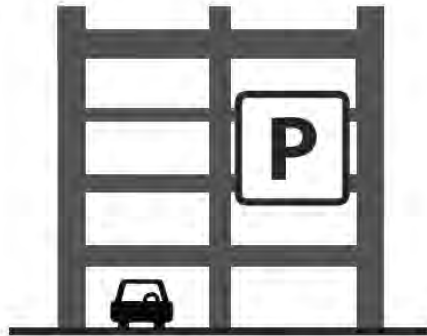
- Construct 450-stall multi-level parking structure. Pedestrian/bicycle improvements
- Examine alternatives to expanded parking
Additional bus/transfer facilities
- Transit speed and reliability improvements
- Expanded or new passenger drop-off areas



Project scope

Planning effort will determine the most effective and affordable mix of improvements

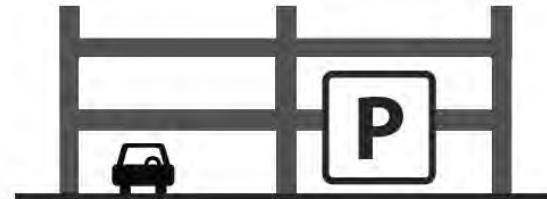
Option 1



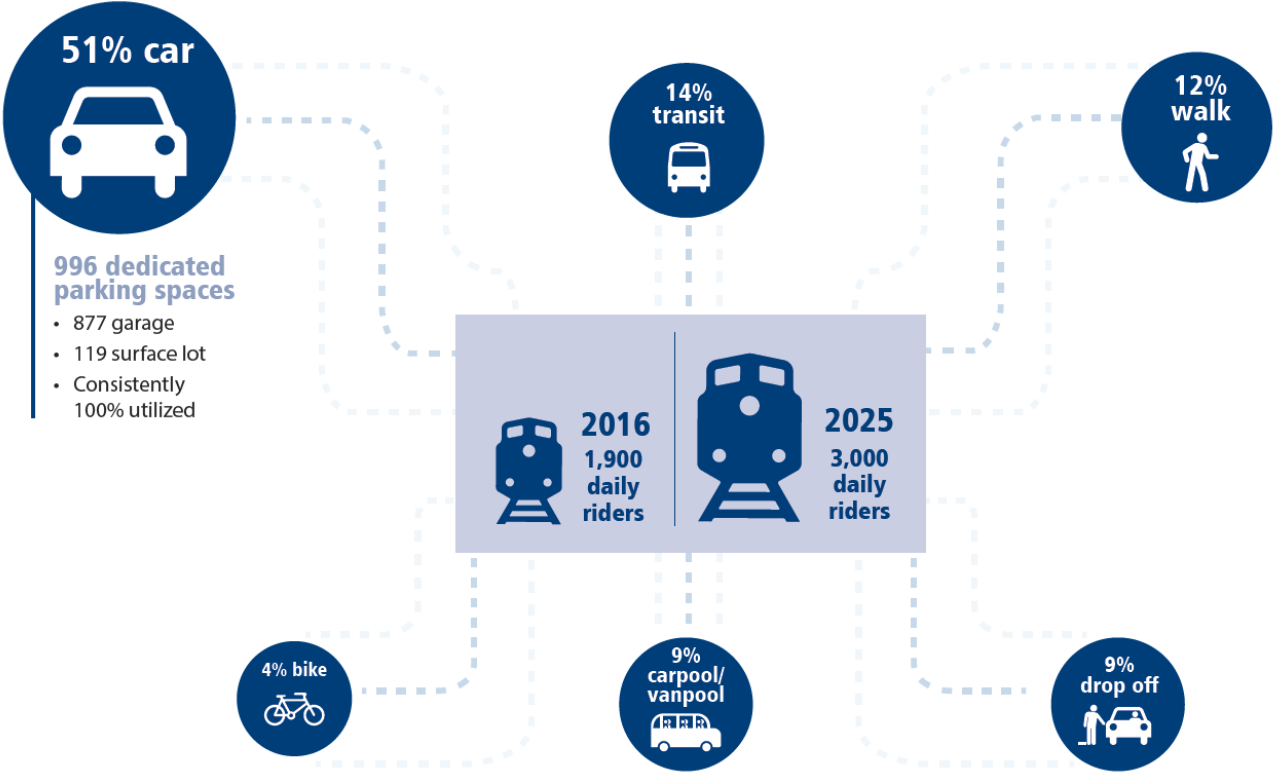
Option 2



or



How are riders getting to Kent station?

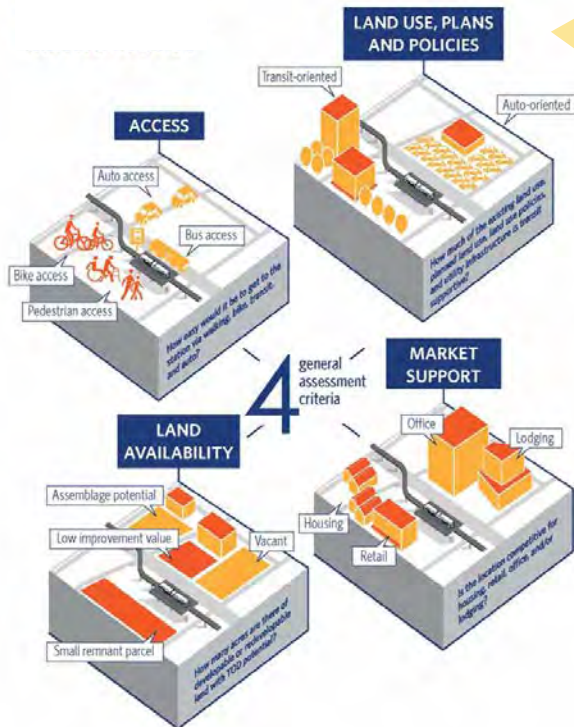


Potential garage sites - Kent

- Recommended for further analysis
- Not recommended for further analysis
- Intersection to be analyzed



Sound Transit's Approach to TOD



“Community TOD”

Coordinate with and support planning and development activities within ½ mile of station areas.

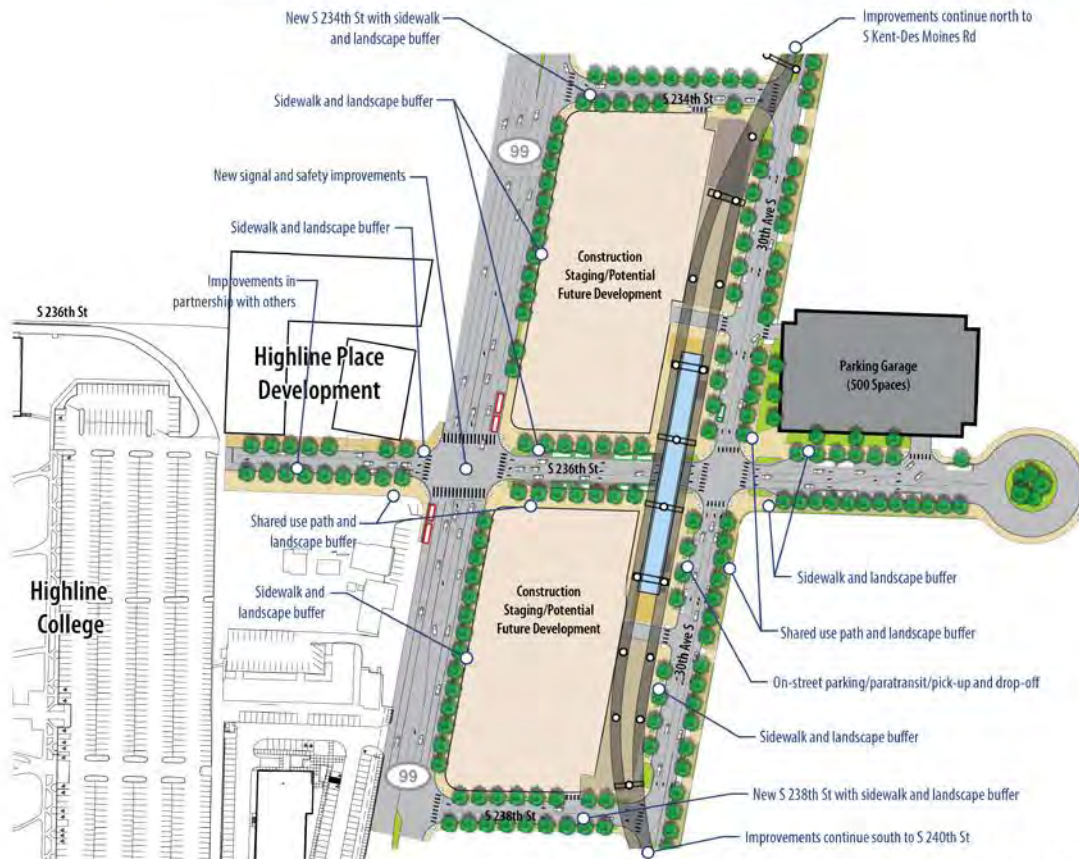
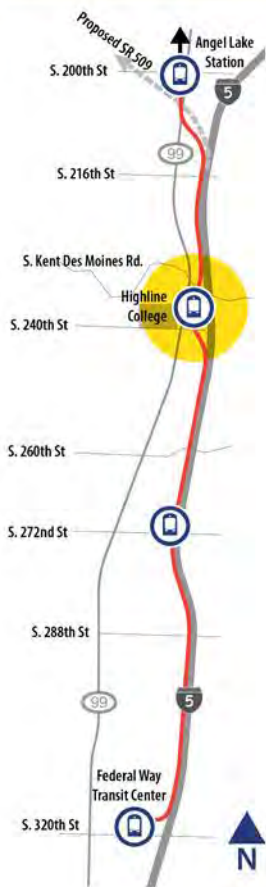
“Agency TOD”

Engage private, public, and non-profit partners in redevelopment of Agency-owned property no longer needed for transit uses.



Federal Way Link Extension

Station Concept - Kent/Des Moines Station



Note: Includes Access Improvements by Sound Transit.



METRO CONNECTS

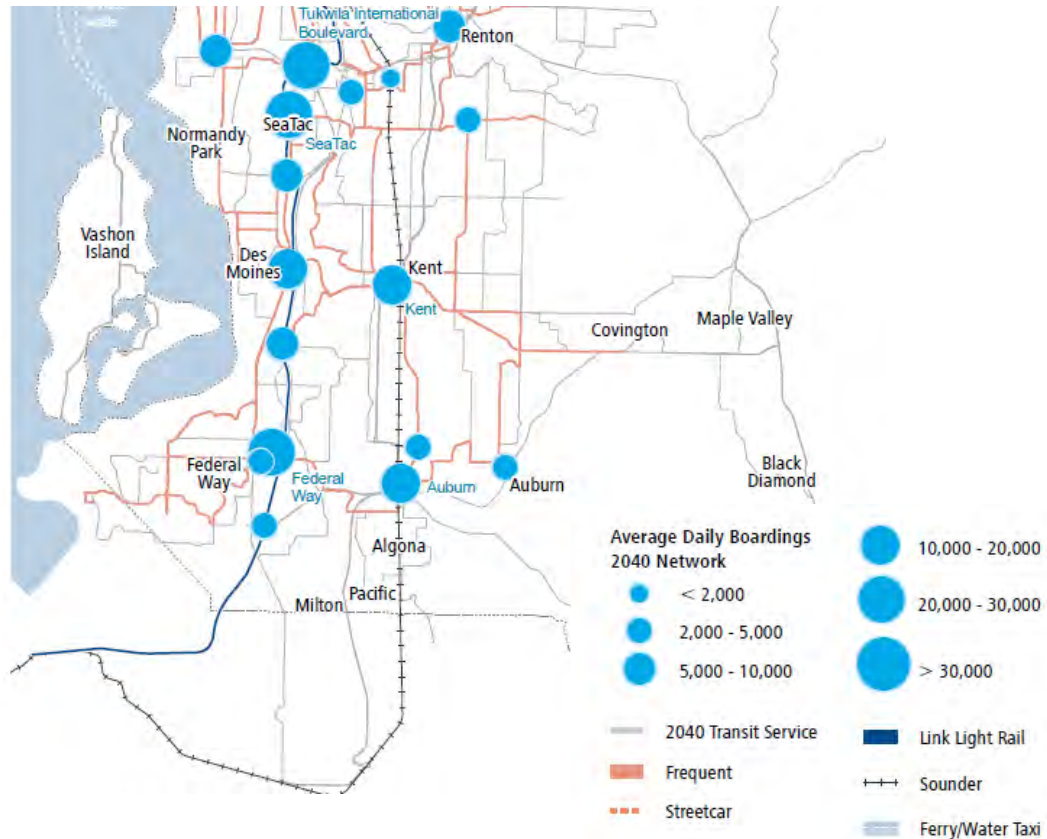
MORE
SERVICE

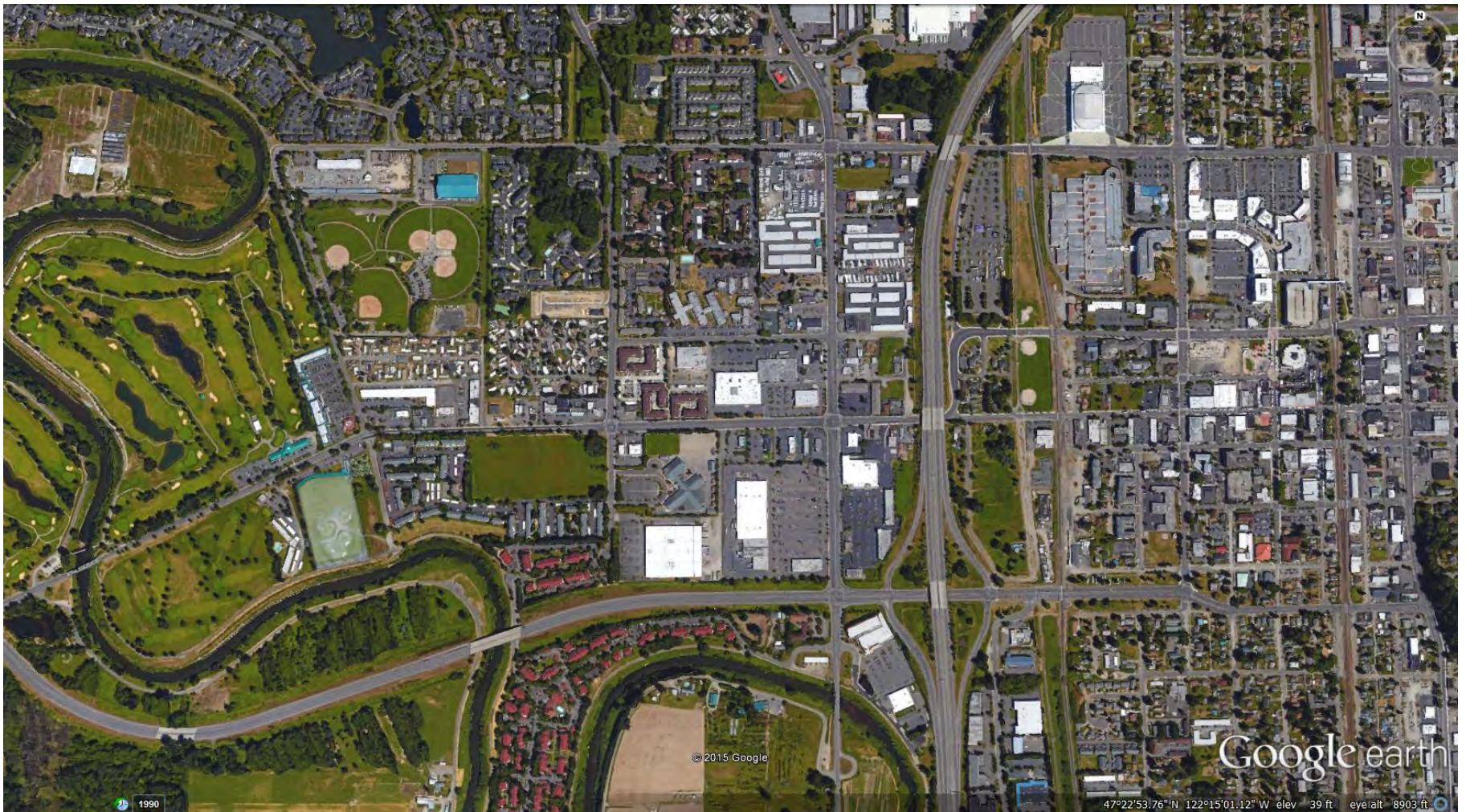
MORE
CHOICES

ONE
SYSTEM

Kent Station Access Improvements Stakeholder Group Meeting
February 13, 2017

Improving Transit Hubs and Stations





1990

© 2015 Google

Google earth

47°22'53.76" N 122°15'01.12" W elev 39 ft eye alt 8903 ft